



UNIVERSITY OF
PLYMOUTH



School of Biological and Marine Sciences
Faculty of Science and Engineering

2017-03-01

An Annotated Draft Genome for *Radix auricularia* (Gastropoda, Mollusca)

T Schell

B Feldmeyer

H Schmidt

B Greshake

O Tills *School of Biological and Marine Sciences*

et al. *See next page for additional authors*

Let us know how access to this document benefits you

General rights

All content in PEARL is protected by copyright law. Author manuscripts are made available in accordance with publisher policies. Please cite only the published version using the details provided on the item record or document. In the absence of an open licence (e.g. Creative Commons), permissions for further reuse of content should be sought from the publisher or author.

Take down policy

If you believe that this document breaches copyright please [contact the library](#) providing details, and we will remove access to the work immediately and investigate your claim.

Follow this and additional works at: <https://pearl.plymouth.ac.uk/bms-research>

Recommended Citation

Schell, T., Feldmeyer, B., Schmidt, H., Greshake, B., Tills, O., Truebano, M., Rundle, S., Paule, J., Ebersberger, I., & Pfenninger, M. (2017) 'An Annotated Draft Genome for *Radix auricularia* (Gastropoda, Mollusca)', *Genome Biology and Evolution*, 9(3), pp. 585-592. Available at: <https://doi.org/10.1093/gbe/evx032>

This Article is brought to you for free and open access by the Faculty of Science and Engineering at PEARL. It has been accepted for inclusion in School of Biological and Marine Sciences by an authorized administrator of PEARL. For more information, please contact openresearch@plymouth.ac.uk.

Authors

T Schell, B Feldmeyer, H Schmidt, B Greshake, O Tills, M Truebano, SD Rundle, J Paule, I Ebersberger, and M Pfenninger

An Annotated Draft Genome for *Radix auricularia* (Gastropoda, Mollusca)

Tilman Schell^{1,2,*}, Barbara Feldmeyer², Hanno Schmidt², Bastian Greshake³, Oliver Tills⁴, Manuela Truebano⁴, Simon D. Rundle⁴, Juraj Paule⁵, Ingo Ebersberger^{2,3}, and Markus Pfenninger^{1,2}

¹Molecular Ecology Group, Institute for Ecology, Evolution and Diversity, Goethe-University, Frankfurt am Main, Germany

²Adaptation and Climate, Senckenberg Biodiversity and Climate Research Centre, Frankfurt am Main, Germany

³Department for Applied Bioinformatics, Institute for Cell Biology and Neuroscience Goethe-University, Frankfurt am Main, Germany

⁴Marine Biology and Ecology Research Centre, Marine Institute, School of Marine Science and Engineering, Plymouth University, United Kingdom

⁵Department of Botany and Molecular Evolution, Senckenberg Research Institute, Frankfurt am Main, Germany

*Corresponding author: E-mail: tilman.schell@senckenberg.de.

Accepted: February 14, 2017

Data deposition: This project has been deposited at NCBI under the accession PRJNA350764.

Abstract

Molluscs are the second most species-rich phylum in the animal kingdom, yet only 11 genomes of this group have been published so far. Here, we present the draft genome sequence of the pulmonate freshwater snail *Radix auricularia*. Six whole genome shotgun libraries with different layouts were sequenced. The resulting assembly comprises 4,823 scaffolds with a cumulative length of 910 Mb and an overall read coverage of 72×. The assembly contains 94.6% of a metazoan core gene collection, indicating an almost complete coverage of the coding fraction. The discrepancy of ~ 690 Mb compared with the estimated genome size of *R. auricularia* (1.6 Gb) results from a high repeat content of 70% mainly comprising DNA transposons. The annotation of 17,338 protein coding genes was supported by the use of publicly available transcriptome data. This draft will serve as starting point for further genomic and population genetic research in this scientifically important phylum.

Key words: *de novo* assembly, genome size, repeats.

Introduction

Gastropods are one of the broadest distributed eukaryotic taxa, being present across ecosystems worldwide. They occupy a maximally diverse set of habitats ranging from the deep sea to the highest mountains and from deserts to the Arctic, and have evolved to a range of specific adaptations (Romero et al. 2015, 2016). However, as for molluscs in general, whose species richness is second only to the arthropods (Dunn and Ryan 2015), gastropods are highly underrepresented among publicly available genomes (fig. 1). To date, only eleven mollusc genome sequences—of which six are from gastropods—exist with varying qualities concerning contiguity and completeness (table 1). Any additional genome sequence has therefore the potential to substantially increase the knowledge about molluscs in particular and animal genomics in general.

The pulmonate freshwater snail genus *Radix* has a holarctic distribution (Glöer, Meier-Brook 1998; Cordellier et al. 2012) and plays an important role in investigating climate change effects in freshwater ecosystems (Sommer et al. 2012). The number of European species as well as the precise evolutionary relationships within the genus is controversial. This is mainly due to weak morphological differentiation and enormous environmental plasticity across species (Pfenninger et al. 2006). Members of the genus are simultaneously hermaphroditic (Jarne and Delay 1990; Yu et al. 2016) and both outcrossing and self-fertilization occur (Jarne and Delay 1990; Jarne and Charlesworth 1993; Wiehn et al. 2002). The genus *Radix* is studied in many different fields, including parasitology (Huňová et al. 2012), evolutionary development (Tills et al. 2011), developmental plasticity (Rundle et al. 2011), ecotoxicology (Hallgren et al. 2012), climate change (Pfenninger et al.

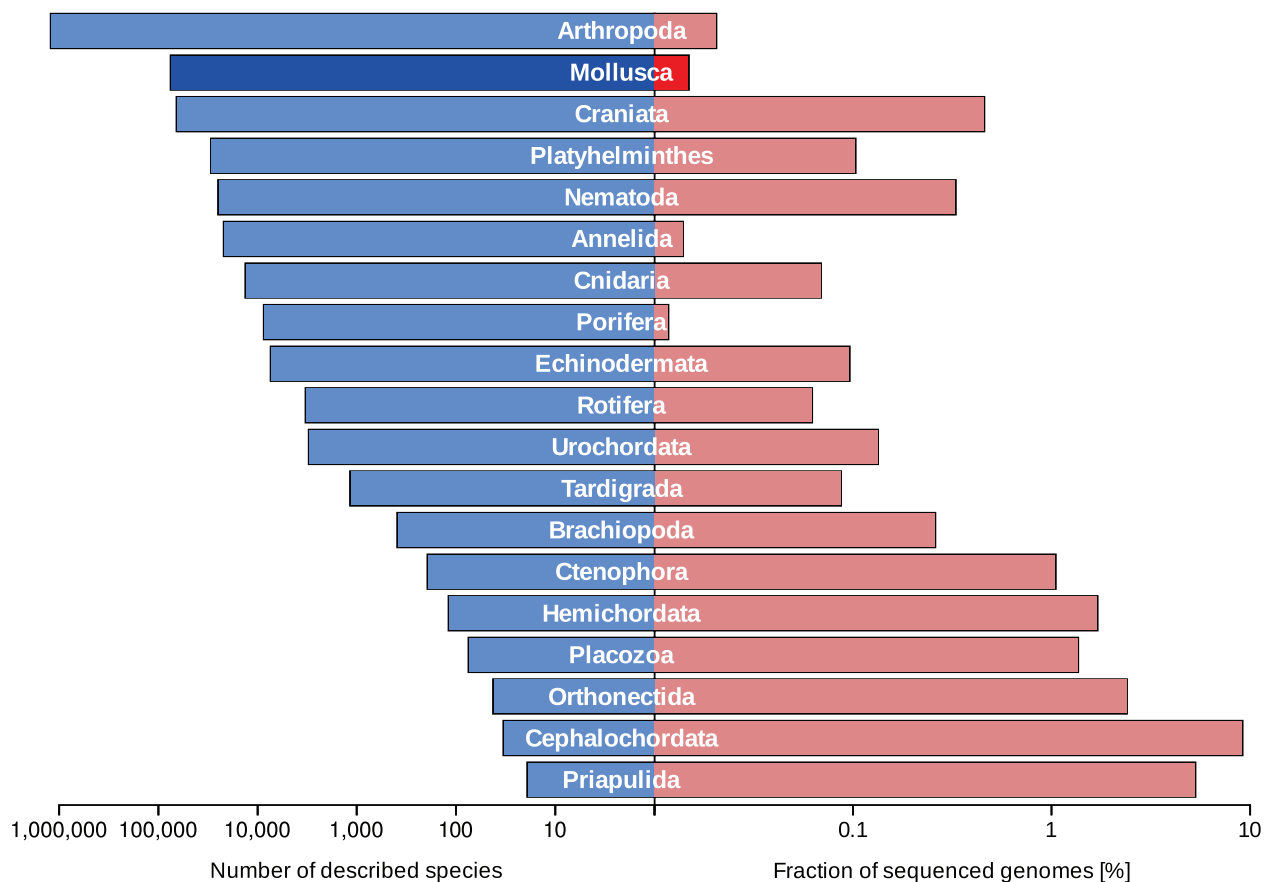


Fig. 1.—The number of described species (Dunn and Ryan 2015; GIGA Community of Scientists 2014) and the fraction of sequenced genomes (<http://www.ncbi.nlm.nih.gov/genome/browse/> on September 1, 2016). Animal phyla were obtained from (Dunn et al. 2014). Phyla with genomic record are displayed. Note the logarithmic scaling.

2011), local adaptation (Quintela et al. 2014; Johansson et al. 2016), hybridization (Patel et al. 2015) and biodiversity (Albrecht et al. 2012). Despite this broad range of interests, genomic resources, are scarce and limited to transcriptomes (Feldmeyer et al. 2011, 2015; Tills et al. 2015) and mitochondrial genomes (Feldmeyer et al. 2010).

Here, we present the annotated draft genome sequence for *Radix auricularia* L. (fig. 2). This serves as an important foundation for future genomic and applied research in this scientifically important genus.

Materials and Methods

Sample Collection and Sequencing

Snails were collected from a pond in the Taunus, Germany, identified with COI barcoding (Pfenninger et al. 2006) and kept under laboratory conditions for at least five generations of inbreeding by full-sib mating. Three specimens of *R. auricularia* (fig. 2) were used for DNA extraction. Pooled DNA was used for preparation of three paired end and three mate pair

(2, 5, and 10 kbp insert size) libraries, that were sequenced on an Illumina HiSeq 2000 and 2500 at Beijing Genomics Institute, Hong Kong (supplementary note 1 and table 1, Supplementary Material online). Reads were cleaned of adapter sequences using Trimmomatic 0.33 (Bolger et al. 2014; supplementary note 7, Supplementary Material online) and screened for contaminations with FastqScreen 0.5.2 (http://www.bioinformatics.babraham.ac.uk/projects/fastq_screen/; last accessed February 22, 2017; supplementary note 8 and fig. 7, Supplementary Material online). Raw reads have been deposited under NCBI BioProject PRJNA350764.

Genome Size Estimation

Genome size was estimated by flow cytometry based on a modified protocol of (Otto 1990; supplementary note 9, Supplementary Material online). Additionally, we estimated the genome size from our sequence data by dividing the total sum of nucleotides used for the assembly by the peak coverage from mapping back the assembly reads with the *bwa mem* algorithm from BWA 0.5.10 (Li 2013;

Table 1

Available Mollusc Genomes

Species	Assembly Length/Estimated Genome Size = % Assembled	#sequences/N50 (*contigs)	Coverage/Technology	Gap [%]	BUSCOs Present	Number of Annotated Proteins
<i>Octopus bimaculoides</i> ^a	2.4 Gb/2.7 Gb = 89%	151,674/475 kb	92/Illumina	15.1	73.8	23,994
<i>Dreissena polymorpha</i> ^b	906 kb/1.7 Gb ^c = 0.06%	* 1,057/855 bp	3/Roche 454	0	0	—
<i>Corbicula fluminea</i> ^d	663 kb/?	* 778/849 bp	3/Roche 454	0	0	—
<i>Crassostrea gigas</i> ^e	558 Mb/890 Mb ^f = 62.7%	7,659/402 kb	100/Illumina	11.8	82	45,406
<i>Mytilus galloprovincialis</i> ^g	1.6 Gb/1.9 Gb ^h = 86%	* 2,315,965/1067 bp	17/Illumina	0	1.6	—
<i>Lottia gigantea</i> ⁱ	360 Mb/421 Mb ^j = 85%	4,469/1870 kb	8.87/Sanger	16.9	97.0	23,822
<i>Patella vulgata</i> ^k	579 Mb/1,460 Mb = 39.7%	295,348/3160 bp	25.6/Illumina	0.00062	16.6	—
<i>Conus tribblei</i> ^l	2,160 Mb/2,757 Mb = 78%	1,126,156/2681 bp	28.5/Illumina	0	44	—
<i>Aplysia californica</i> ^m	927 Mb/1,760 Mb ^j resp. 1,956 Mb ⁿ = 53 resp. 47%	4,332/918 kb	66/Illumina	20.4	94.1	27,591
<i>Biomphalaria glabrata</i> ^o	916 Mb/929 Mb ^c = 99%	331,401/48 kb	27.5/Roche 454	1.9	89.1	36,675
<i>Lymnaea stagnalis</i> ^p	833 Mb/1,193 Mb ^q = 70%	* 328,378/5.8 kb		0	88	—

NOTE.—An overview from column 2 can be found in [supplementary figure 4, Supplementary Material](#) online. Column 5: Fraction of N's in the assembly. Column 6: BUSCOs: (Benchmarking Universal Single-Copy Orthologs) $N_{Metazoa} = 843$; Present = complete + fragmented.

References: Genome sizes are from the genome publications, if not cited separately.

^a(Albertin et al. 2015).

^b(Peñarrubia, Sanz, et al. 2015).

^c(Gregory 2003).

^d(Peñarrubia, Araguas, et al. 2015).

^e(Zhang et al. 2012).

^f(González-Tizón et al. 2000).

^g(Nguyen et al. 2014).

^h(Rodríguez-Juiz et al. 1996).

ⁱ(Simakov et al. 2013).

^j(Hinegardner 1974).

^k(Kenny et al. 2015).

^l(Barghi et al. 2016).

^m(Moroz et al.) GCF_000002075.1.

ⁿ(Lasek & Dower 2013).

^o(Matty Knight, Coen M. Adema, Nithya Raghavan, Eric S. Loker) GCF_000457365.1.

^p(unpublished—Ashworth Laboratories 2016) GCA_900036025.1.

^q(Vinogradov 1998).

[supplementary note 4, Supplementary Material](#) online). Re-mappings were also used to estimate the repeat content of the genome ([supplementary note 5, Supplementary Material](#) online).

Assembly Strategy

Reads were assembled using the Platanus 1.2.1 pipeline (Kajitani et al. 2014) with k-mer sizes ranging from 63 to 88 and a step size of 2. All other assembly parameters were kept at the default value. The output of the Platanus pipeline was filtered for sequences ≥ 500 bp. Afterwards, scaffolding was performed using SSPACE 3.0 (Boetzer et al. 2011) with “contig extension” turned on. To further increase the contiguity of the draft genome, we applied a third scaffolding step, making use of the cDNA sequence data. Transcriptome contig sequences of *R. auricularia* and three closely related species ([supplementary note 10, Supplementary Material](#) online) were mapped sequentially according to phylogeny (Feldmeyer et al.



FIG. 2.—Photograph of *Radix auricularia*. Picture by Markus Pfenninger.

2015) using BLAT 35 (Kent 2002), with *-extendThroughN* enabled apart from default settings, onto the scaffolds; the gapped alignments were then used for joining of sequences with *L_RNA_scaffolder* (Xue et al. 2013). Finally, all sequences with at least 1,000 bp were used as input for GapFiller 1.10 (Boetzer et al. 2012) to close extant gaps in the draft genome. Details of the assembly can be found in [supplementary note 11](#), [Supplementary Material](#) online.

Annotation Strategy

Metazoan core orthologous genes were searched in the *R. auricularia* assembly and all other available mollusc genomes using BUSCO 1.2b (Simão et al. 2015).

The whole annotation process was performed using the MAKER2 2.31.8 pipeline and affiliated programs (Cantarel et al. 2008; Holt and Yandell 2011). Initially, we built a custom repeat library from the assembly using RepeatModeler 1.0.4 (Simit and Hubley 2015) and read data using dnaPipeTE 1.2 (Goubert et al. 2015) with 30 upstream trials on varying coverage depths and then 50 parallel runs on the best-fitting coverage of 0.025 ([supplementary note 12](#), [Supplementary Material](#) online). The draft genome and transcriptome of *R. auricularia* ([supplementary note 10](#), [Supplementary Material](#) online) in addition to the BUSCO 1.2b (Simão et al. 2015) annotations of core metazoan genes on the draft genome were used as input for the initial training at the Augustus webserver (Stanke et al. 2004; <http://bioinf.uni-greifswald.de/webaugustus/>; last accessed February 22, 2017). As additional input for MAKER2, we created two hidden Markov models on the gene structure of *R. auricularia*. One was generated by GeneMark 4.32 (Lomsadze et al. 2005) and another by SNAP 2006-07-28 (Korf 2004), using the output of CEGMA v2.5 (Parra et al. 2007; summarized results in [supplementary table 9](#), [Supplementary Material](#) online). We ran three consecutive iterations of MAKER2 with the draft genome sequence, the transcriptomes ([supplementary note 10](#), [Supplementary Material](#) online), models from Augustus, SNAP and GeneMark, the repeat library and the Swiss-Prot database (accessed at May 23, 2016). Between the iterations, the Augustus 3.2.2 (Stanke et al. 2004) and SNAP models were retrained according to the best-practice MAKER2 workflow ([supplementary note 13](#), [Supplementary Material](#) online). Finally, all protein sequences from MAKER2 output were assigned putative names by BLASTP searches (Camacho et al. 2009) against the Swiss-Prot database. In addition we used the targeted ortholog search tool, HaMStR v. 13.2.6 (Ebersberger et al. 2009; <http://www.sourceforge.net/projects/hamstr/>; last accessed February 22, 2017) to screen for 1,031 evolutionarily conserved genes that predate the split of animals and fungi. HaMStR was called with the options *-strict*, *-checkcoorthologsref*, and *-hitlimit=5*. The profile hidden Markov models that served as input for the search are included in the HaMStR distribution.

Table 2

Characteristics of the *Radix auricularia* Genome and Draft Assembly

Parameter	Value
Haploid chromosome number	17 (Garbar and Kornishin 2003)
Estimated genome length	1.51 Gb (Vinogradov 1998)
Flow cytometry	1.58 Gb ± 21.5 Mb (this study)
Sequencing coverage	1.60 Gb
Total assembly length	0.91 Gb single copy or high complexity regions
#scaffolds	4,823
N50	578,730 bp
Gaps	6.4% N
Coverage	72x
Estimation of gene completeness	94.6% of BUSCO genes present
Gene prediction	17,338 genes
Gene space (UTR, Exons, Introns etc.)	200.6 Mb = 21.9% of assembly
Gene length (median)	8.0 kb
Gene fragmentation	147,195 exons
Exon space	25.3 Mb = 2.8% of assembly (1.6% of total genome)
Exon length (median)	125 bp
Protein length (median)	332 AA

We created orthologous groups from protein sequences of all six annotated molluscs and 16 additional nonmollusc spiralian species with OrthoFinder 0.7.1 (Emms and Kelly 2015). All proteins were functionally annotated using InterProScan 5 (Zdobnov and Apweiler 2001; Quevillon et al. 2005). The enrichment analyses were performed in TopGO (Alexa and Rahnenfuhrer 2016), a bioconductor package for R (R Development Core Team 2008). We tested for significant enrichment of GO terms in proteins private to *Radix* and proteins found in all molluscs but *Radix*. We applied a Fischer's exact test, FDR correction and filtered by *q*-values smaller than 0.05. Additional information can be found in [supplementary note 6](#), [Supplementary Material](#) online.

Results and Discussion

Genome Assembly

A total of 1,000,372,010 raw reads ([supplementary note 1](#) and [table 1](#), [Supplementary Material](#) online) were generated and assembled into 4,823 scaffolds ([table 2](#); [supplementary table 2](#), [Supplementary Material](#) online). The mitochondrial genome (13,744 bp) was fully reconstructed, evidenced by comparison to the previously published sequence (Feldmeyer et al. 2015). Re-mapping the preprocessed reads revealed that 97.6% could be unambiguously placed, resulting in a per position coverage distribution with its peak at 72x

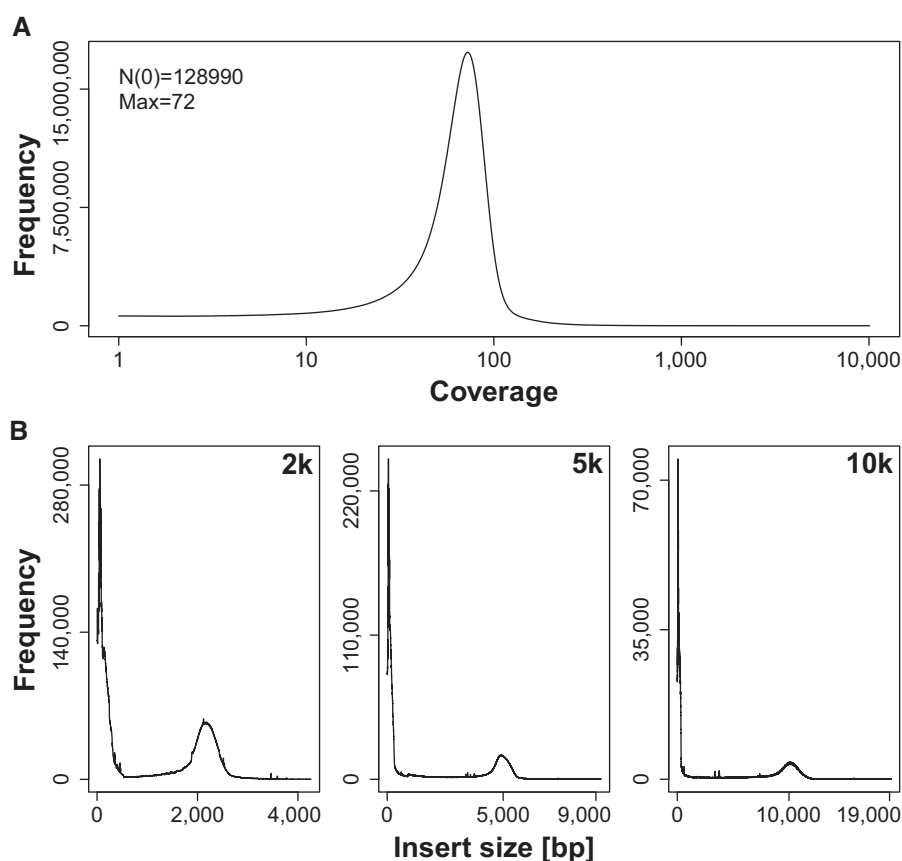


FIG. 3.—Re-mapping statistics. For details, see [supplementary note 2, Supplementary Material](#) online. (A) Coverage distribution per position. The peak is located at a coverage of 72 \times . The x-axis is given in log-scale. (B) Insert size distributions for the three mate pair libraries with insert sizes of 2, 5, and 10 kb. The high fraction of mate pairs with insert sizes close to 0 is due to the repetitive nature of the *Radix* genome ([supplementary table 3, Supplementary Material](#) online). In particular, repeat stretches that are not properly resolved in the genome assembly interfere with a proper placement of reads.

([supplementary note 2, Supplementary Material](#) online; [fig. 3A](#)). Additionally estimated insert sizes from mate pair libraries match their expected size ([fig. 3B](#)).

The cumulative length of all scaffolds sums up to 910 Mb, which is about 665 Mb below the genome length estimates resulting from flow cytometric analyses (1,575 Mb; [supplementary note 3, Supplementary Material](#) online) and from a read-mapping analysis (1,603 Mb; [supplementary note 4, Supplementary Material](#) online). Both genome size estimates are consistent. This indicates an approximately uniform coverage of the nuclear genome in shotgun libraries without substantial bias introduced during library generation. This difference in length is most likely caused by a high repeat content in the *Radix* genome. Within scaffolds, 40.4% of the sequence content was annotated as repeats mostly at the ends of contigs ([fig. 4](#)). This, in combination with a pronounced increase of read coverage at contig ends ([fig. 4](#)) is typical for collapsed repeat stretches. The overall repeat content of the genome was estimated to be approximately 70% ([supplementary note 5](#)). The majority of repeats were either

classified as Transposable Elements or as “unknown” ([supplementary fig. 3, Supplementary Material](#) online). The difference between genome size and assembly length of this *R. auricularia* draft assembly resembles that of other published mollusc genomes ([supplementary fig. 4, Supplementary Material](#) online). However, when considering contiguity reflected in the N50 value it ranks among the top mollusc genomes ([tables 1 and 2](#)). To evaluate completeness of the assembly’s gene space we used BUSCO (Simão et al. 2015) in combination with the provided metazoan set and recovered 94.6% of the subsumed genes. This suggests no conspicuous lack of gene information.

Genome Annotation

The annotation resulted in 17,338 protein coding genes ([table 2](#)) of which 70.4% show a significant sequence similarity to entries in the Swiss-Prot database (e -value $< 10^{-10}$, accessed on May 11, 2016). The number of identified genes is at the lower end compared with other annotated mollusc genomes (Min: *Lottia gigantea* 23,822; Max: *Crassostrea gigas* 45,406;

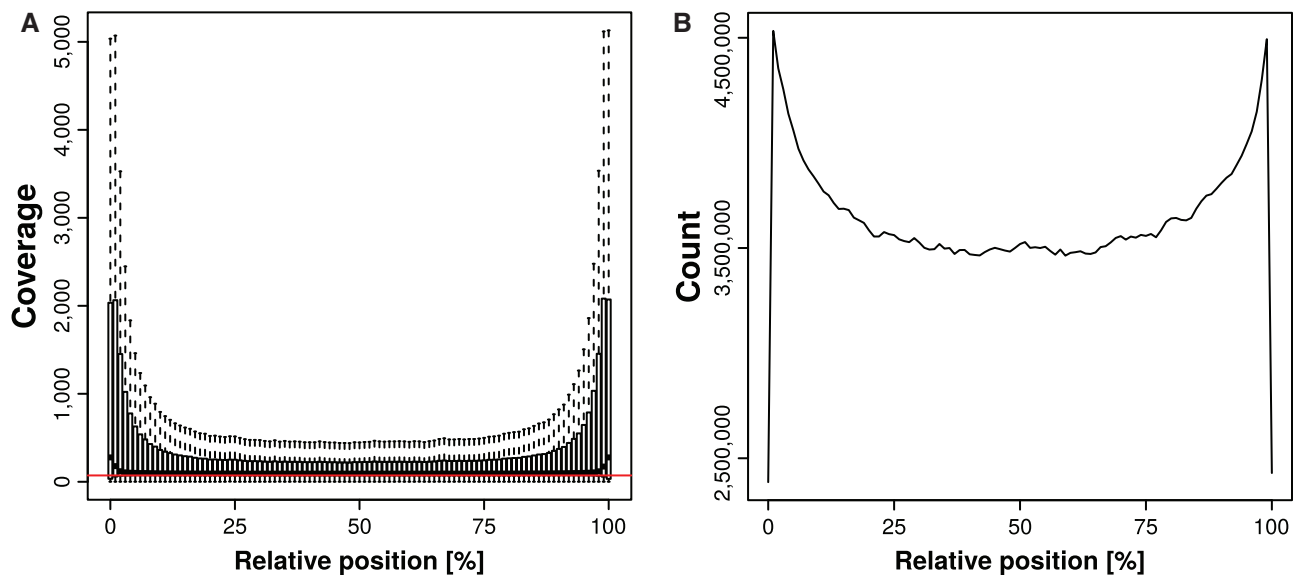


FIG. 4.—Collapsed repeats. (A) Coverage of continuous unambiguous sequence parts of the scaffolds. Outliers from boxplots are not shown. The red line represents the most frequent coverage of $72 \times$ (fig. 3A). (B) Positions annotated as repeats along continuous unambiguous sequence parts of the scaffolds.

table 1; supplementary table 4, Supplementary Material online). Thus, predicted *Radix* proteins were screened for completeness regarding evolutionary conserved genes using HaMStR (Ebersberger et al. 2009). The analysis resulted in a recovery of 93.7% and is in line with the results from BUSCO. Extrapolating completeness estimates of both tools suggests that the annotation covers the majority of genes being present in the draft genome sequence. We then checked how the differences in protein numbers could be explained. The fraction of orthogroups (cluster of orthologous genes; see “Materials and Methods” section) containing only one sequence per species was highest in *Radix* (supplementary fig. 5, Supplementary Material online). Moreover, there was a negative correlation ($R^2 = 0.77$; $P = 0.02$) between the number of annotated proteins per species and fraction of orthogroups containing only one sequence per species (supplementary fig. 6, Supplementary Material online). One explanation for this observation could be lineage specific gene duplications in the other mollusc lineages. Additionally, artificial gene fissions in the course of genome annotation may be less common in *Radix*. This might be attributed to our use of comprehensive transcriptomic data of *Radix* for guiding gene prediction.

Next to the evolutionarily old genes represented in the BUSCO and HaMStR gene sets, *Radix* contains 1,481 genes for which we could find no orthologs in the other mollusc and additional nonmollusc spiralian gene sets (supplementary table 5 and note 6, Supplementary Material online). We tested for over-representation of functional categories in genes private to *Radix*, as well as in genes present in all molluscs but *Radix*. We identified 17 Gene Ontology (GO) terms to be significantly enriched amongst the 1,481 proteins private to *Radix* compared with all other mollusc and nonmollusc

spiralian protein sets available. Enriched terms include “nucleoside transmembrane transport”, “carbohydrate metabolic process,” and “chitin catabolic process” (supplementary table 6, Supplementary Material online). Among the categories found in all annotated molluscs but *Radix* (supplementary table 7 and note 6, Supplementary Material online), the “G-protein coupled receptor signaling pathway” is the most prominent one. G-protein receptors are involved in reactions to “hormones, neurotransmitters, and environmental stimulants” (Rosenbaum et al. 2009). The loss of these genes could have led to reduced sensitivity to such stimuli in *Radix*. Whether the reduced number of G-coupled receptor pathway components is biologically meaningful, or a result of technical and analytical limitations, cannot be determined from the present data. Membrane proteins, for example, are generally more diverse than water soluble proteins in the tree of life (Sojo et al. 2016), so we hypothesize that its proteins could be highly modified and were thus not identified as such in *Radix*.

Conclusion

Here we present a draft genome of the snail *Radix auriculara*. The genome is comparable in size to other mollusc genomes and also rich in repeats. This new genomic resource will allow conducting future studies on genome evolution, population genomics, and gene evolution within this genus and higher gastropod and mollusc taxa.

Supplementary Material

Supplementary data are available at *Genome Biology and Evolution* online.

Acknowledgments

The project was funded by SAW-network of the Leibniz Association (project 291). The authors thank Fabrizio Ghiselli and another anonymous reviewer for their helpful comments on the manuscript.

Literature Cited

- Albertin CB et al. 2015. The octopus genome and the evolution of cephalopod neural and morphological novelties. *Nature*. 524:220–224.
- Albrecht C, Haufler T, Schreiber K, Wilke T. 2012. Mollusc biodiversity in a European ancient lake system: Lakes Prespa and Mikri Prespa in the Balkans. *Hydrobiologia* 682:47–59.
- Alexa A, Rahnenfuhrer J. 2016. topGO: Enrichment Analysis for Gene Ontology. R package version 2.26.0.
- Barghi N, Concepcion GP, Olivera BM, Lluisma AO. 2016. Structural features of conopeptide genes inferred from partial sequences of the *Conus tribblei* genome. *Mol. Genet. Genomics*. 291:411–422.
- Boetzer M, et al. 2012. Toward almost closed genomes with GapFiller. *Genome Biol.* 13:R56.
- Boetzer M, Henkel CV, Jansen HJ, Butler D, Pirovano W. 2011. Scaffolding pre-assembled contigs using SSPACE. *Bioinformatics* 27:578–579.
- Bolger AM, Lohse M, Usadel B. 2014. Trimmomatic: a flexible trimmer for Illumina sequence data. *Bioinformatics* 30:2114–2120.
- Camacho C, et al. 2009. BLAST plus: architecture and applications. *BMC Bioinformatics* 10(1): 421.
- Cantarel BL, et al. 2008. MAKER: an easy-to-use annotation pipeline designed for emerging model organism genomes. *Genome Res.* 18:188–196.
- Cordellier M, Pfenninger A, Streit B, Pfenninger M. 2012. Assessing the effects of climate change on the distribution of pulmonate freshwater snail biodiversity. *Mar Biol.* doi: 10.1007/s00227-012-1894-9.
- Dunn CW, Giribet G, Edgecombe GD, Hejnol A. 2014. Animal phylogeny and its evolutionary implications. *Annu Rev Ecol Evol Syst.* 45:371–395.
- Dunn CW, Ryan JF. 2015. The evolution of animal genomes. *Curr Opin Genet Dev.* 35:25–32.
- Ebersberger I, Strauss S, von Haeseler A. 2009. HaMSTR: profile hidden Markov model based search for orthologs in ESTs. *BMC Evol Biol.* 9:157.
- Emms DM, Kelly S. 2015. OrthoFinder: solving fundamental biases in whole genome comparisons dramatically improves orthogroup inference accuracy. *Genome Biol.* 16:157.
- Feldmeyer B, Greshake B, Funke E, Ebersberger I, Pfenninger M. 2015. Positive selection in development and growth rate regulation genes involved in species divergence of the genus *Radix*. *BMC Evol Biol.* 15:164.
- Feldmeyer B, Hoffmeier K, Pfenninger M. 2010. The complete mitochondrial genome of *Radix balthica* (Pulmonata, Basommatophora), obtained by low coverage shot gun next generation sequencing. *Mol Phylogenet Evol.* 57:1329–1333.
- Feldmeyer B, Wheat CW, Krezdorn N, Rotter B, Pfenninger M. 2011. Short read Illumina data for the de novo assembly of a non-model snail species transcriptome (*Radix balthica*, Basommatophora, Pulmonata), and a comparison of assembler performance. *BMC Genomics* 12:317.
- Garbar AV, Korniushev AV. 2003. Karyotypes of European species of *Radix* (Gastropoda: Pulmonata: Lymnaeidae) and their relevance to species distinction in the genus. *Malacologia*. 45:141–148.
- GIGA Community of Scientists. 2014. The Global Invertebrate Genomics Alliance (GIGA): developing community resources to study diverse invertebrate genomes. *J Hered.* 105:1–18.
- Glöer P, Meier-Brook C. 1998. Süßwassermollusken. Deutscher Jugendbund für Naturbeobachtung. ISBN 3-923376-02-2.
- González-Tizón AM, Martínez-Lage A, Rego I, Ausió J, Méndez J. 2000. DNA content, karyotypes, and chromosomal location of 18S-5.8S-28S ribosomal loci in some species of bivalve molluscs from the Pacific Canadian coast. *Genome*. 43:1065–1072.
- Goubert C, et al. 2015. De novo assembly and annotation of the Asian tiger mosquito (*Aedes albopictus*) repeatome with dnaPipeTE from raw genomic reads and comparative analysis with the yellow fever mosquito (*Aedes aegypti*). *Genome Biol Evol.* 7:1192–1205.
- Hallgren P, Sorita Z, Berglund O, Persson A. 2012. Effects of 17 α -ethinylestradiol on individual life-history parameters and estimated population growth rates of the freshwater gastropods *Radix balthica* and *Bithynia tentaculata*. *Ecotoxicology* 21:803–810.
- Hinegardner R. 1974. Cellular DNA content of the Mollusca. *Comp. Biochem. Physiol. – Part A Physiol.* 47:447–460.
- Holt C, Yandell M. 2011. MAKER2: an annotation pipeline and genome-database management tool for second-generation genome projects. *BMC Bioinformatics* 12:491.
- Huňová K, et al. 2012. *Radix* spp.: identification of trematode intermediate hosts in the Czech Republic. *Acta Parasitol.* 57:273–284.
- Jarne P, Charlesworth D. 1993. The evolution of the selfing rate in functionally hermaphrodite plants and animals. *Annu Rev Ecol Syst.* 24:441–466.
- Jarne P, Delay B. 1990. Inbreeding depression and self-fertilization in *Lymnaea peregra* (Gastropoda: Pulmonata). *Heredity* 64:169–176.
- Johansson MP, Ermold F, Kristjánsson BK, Laurila A. 2016. Divergence of gastropod life history in contrasting thermal environments in a geothermal lake. *J Evol Biol.* 29:2043–2053.
- Kajitani R, Toshimoto K, Noguchi H, Toyoda A, Ogura Y, Okuno M, Yabana M, Harada M, Nagayasu E, Maruyama H et al. 2014. Efficient de novo assembly of highly heterozygous genomes from whole-genome shotgun short reads. *Genome Res.* 24(8):1384–1395.
- Kenny NJ, Namigai EKO, Marlétaz F, Hui JHL, Shimeld SM. 2015. Draft genome assemblies and predicted microRNA complements of the intertidal lophotrochozoans *Patella vulgata* (Mollusca, Patellogastropoda) and *Spirobranchus (Pomatoceros) lamarcki* (Annelida, Serpulida). *Mar. Genomics*. 24:139–146.
- Kent WJ. 2002. BLAT—the BLAST-like alignment tool. *Genome Res.* 12:656–664.
- Korf I. 2004. Gene finding in novel genomes. *BMC Bioinformatics* 5:59.
- Lasek RJ, Dower WJ. 2013. *Aplysia californica*: Analysis of Nuclear DNA in Individual Nuclei of Giant Neurons *Aplysia californica*: Analysis of Nuclear DNA in Individual Nuclei of Giant Neurons. 172:278–280.
- Li H. 2013. Aligning sequence reads, clone sequences and assembly contigs with BWA-MEM. *arXiv Prepr.* doi: arXiv:1303.3997 [q-bio.GN].
- Lomsadze A, Ter-Hovhannisyann V, Chernoff YO, Borodovsky M. 2005. Gene identification in novel eukaryotic genomes by self-training algorithm. *Nucleic Acids Res.* 33:6494–6506.
- Nguyen TTT, Hayes BJ, Ingram BA. 2014. Genetic parameters and response to selection in blue mussel (*Mytilus galloprovincialis*) using a SNP-based pedigree. *Aquaculture*. 420–421:295–301.
- Otto F. 1990. DAPI staining of fixed cells for high-resolution flow cytometry of nuclear DNA. *Methods Cell Biol.* 33:105–110.
- Parra G, Bradnam K, Korf I. 2007. CEGMA: a pipeline to accurately annotate core genes in eukaryotic genomes. *Bioinformatics* 23:1061–1067.
- Patel S, Schell T, Eifert C, Feldmeyer B, Pfenninger M. 2015. Characterizing a hybrid zone between a cryptic species pair of freshwater snails. *Mol Ecol.* 24:643–655.
- Peñarrubia L, Araguas RM, et al. 2015. Identification of 246 microsatellites in the Asiatic clam (*Corbicula fluminea*). *Conserv. Genet. Resour.* 7:393–395.
- Pfenninger M, Cordellier M, Streit B. 2006. Comparing the efficacy of morphologic and DNA-based taxonomy in the freshwater

- gastropod genus *Radix* (Basommatophora, Pulmonata). *BMC Evol Biol.* 6:100.
- Pfenninger M, Salinger M, Haun T, Feldmeyer B. 2011. Factors and processes shaping the population structure and distribution of genetic variation across the species range of the freshwater snail *Radix balthica* (Pulmonata, Basommatophora). *BMC Evol Biol.* 11:135.
- Quevillon E, et al. 2005. InterProScan: protein domains identifier. *Nucleic Acids Res.* 33:116–120.
- Quintela M, Johansson MP, Kristjánsson BK, Barreiro R, Laurila A. 2014. AFLPs and Mitochondrial haplotypes reveal local adaptation to extreme thermal environments in a freshwater gastropod. *PLoS One* 9:e101821.
- R Development Core Team. 2008. R: a language and environment for statistical computing. Vienna, Austria: The R Foundation for Statistical Computing.
- Rodríguez-Juiz AM, Torrado M, Méndez J. 1996. Genome-size variation in bivalve molluscs determined by flow cytometry. *Mar. Biol.* 126:489–497.
- Romero PE, Pfenninger M, Kano Y, Klusmann-Kolb A. 2015. Molecular phylogeny of the Ellobiidae (Gastropoda: Panpulmonata) supports independent terrestrial invasions. *Mol Phylogenet Evol.* 97:43–54.
- Romero PE, Weigand AM, Pfenninger M. 2016. Positive selection on panpulmonate mitogenomes provide new clues on adaptations to terrestrial life. *BMC Evol Biol.* 16:164.
- Rosenbaum DM, Rasmussen SGF, Kobilka BK. 2009. The structure and function of G-protein-coupled receptors. *Nature* 459:356–363.
- Rundle SD, Smirthwaite JJ, Colbert MW, Spicer JJ. 2011. Predator cues alter the timing of developmental events in gastropod embryos. *Biol Lett.* 7:285–287.
- Simakov O et al. 2013. Insights into bilaterian evolution from three spiralian genomes. *Nature.* 493:526–531.
- Simão FA, Waterhouse RM, Ioannidis P, Kriventseva EV, Zdobnov EM. 2015. BUSCO: assessing genome assembly and annotation completeness with single-copy orthologs. *Bioinformatics* 31:3210–3212.
- Simit A, Hubble R. 2015. RepeatModeler Open-1.0. <http://www.repeat-masker.org>.
- Sojo V, Dessimoz C, Pomiankowski A, Lane N. 2016. Membrane proteins are dramatically less conserved than water-soluble proteins across the tree of life. *Mol Biol Evol.* 33:2874–2884.
- Sommer U, Adrian R, Bauer B, Winder M. 2012. The response of temperate aquatic ecosystems to global warming: novel insights from a multi-disciplinary project. *Mar Biol.* 159:2367–2377.
- Stanke M, Steinkamp R, Waack S, Morgenstern B. 2004. AUGUSTUS: a web server for gene finding in eukaryotes. *Nucleic Acids Res.* 32:309–312.
- Tills O, et al. 2011. A genetic basis for intraspecific differences in developmental timing? *Evol Dev.* 13:542–548.
- Tills O, Truebano M, Rundle S. 2015. An embryonic transcriptome of the pulmonate snail *Radix balthica*. *Mar Genomics* 24:259–260.
- Wiehn JR, et al. 2002. Family-level covariation between parasite resistance and mating system in a hermaphroditic freshwater snail. *Evolution (NY)* 56:1454–1461.
- Xue W, et al. 2013. L_RNA_scaffolder: scaffolding genomes with transcripts. *BMC Genomics* 14:604.
- Yu TL, Deng YH, Zhang J, Duan LP. 2016. Size-assortative copulation in the simultaneously hermaphroditic pond snail *Radix auricularia* (Gastropoda: Pulmonata). *Anim Biol.* 66: 239–247.
- Zhang G et al. 2012. The oyster genome reveals stress adaptation and complexity of shell formation. *Nature.* 490:49–54.
- Zdobnov EM, Apweiler R. 2001. InterProScan—an integration platform for the signature-recognition methods in InterPro. *Bioinformatics* 17:847–848.

Associate editor: Liliana Milani