



UNIVERSITY OF
PLYMOUTH



School of Engineering, Computing and Mathematics
Faculty of Science and Engineering

2020-04-25

A label-free biosensor based on graphene and reduced graphene oxide dual-layer for electrochemical determination of beta-amyloid biomarkers

Jagriti Sethi

Bulck M Van

Ahmed Suhail

Mina Safarzadeh

Ana Perez-Castillo

et al. *See next page for additional authors*

Let us know how access to this document benefits you

General rights

All content in PEARL is protected by copyright law. Author manuscripts are made available in accordance with publisher policies. Please cite only the published version using the details provided on the item record or document. In the absence of an open licence (e.g. Creative Commons), permissions for further reuse of content should be sought from the publisher or author.

Take down policy

If you believe that this document breaches copyright please [contact the library](#) providing details, and we will remove access to the work immediately and investigate your claim.

Follow this and additional works at: <https://pearl.plymouth.ac.uk/secam-research>

Recommended Citation

Sethi, J., Van, B., Suhail, A., Safarzadeh, M., Perez-Castillo, A., & Pan, G. (2020) 'A label-free biosensor based on graphene and reduced graphene oxide dual-layer for electrochemical determination of beta-amyloid biomarkers', *Microchimica Acta*, 187(5). Available at: <https://doi.org/10.1007/s00604-020-04267-x>

This Article is brought to you for free and open access by the Faculty of Science and Engineering at PEARL. It has been accepted for inclusion in School of Engineering, Computing and Mathematics by an authorized administrator of PEARL. For more information, please contact openresearch@plymouth.ac.uk.

Authors

Jagriti Sethi, Bulck M Van, Ahmed Suhail, Mina Safarzadeh, Ana Perez-Castillo, and Genhua Pan



A label-free biosensor based on graphene and reduced graphene oxide dual-layer for electrochemical determination of beta-amyloid biomarkers

Jagriti Sethi¹ · Michiel Van Bulck^{2,3} · Ahmed Suhail¹ · Mina Safarzadeh¹ · Ana Perez-Castillo^{2,3} · Genhua Pan¹

Received: 2 November 2019 / Accepted: 10 April 2020 / Published online: 25 April 2020
© The Author(s) 2020, corrected publication 2020

Abstract

A label-free biosensor is developed for the determination of plasma-based $A\beta_{1-42}$ biomarker in Alzheimer's disease (AD). The platform is based on highly conductive dual-layer of graphene and electrochemically reduced graphene oxide (rGO). The modification of dual-layer with 1-pyrenebutyric acid *N*-hydroxysuccinimide ester (Pyr-NHS) is achieved to facilitate immobilization of H3 IL21 antibody. The effect of these modifications were studied with morphological, spectral and electrochemical techniques. The response of the biosensor was evaluated using differential pulse voltammetry (DPV). The data was acquired at a working potential of ~ 180 mV and a scan rate of 50 mV s^{-1} . A low limit of detection (LOD) of 2.398 pM is achieved over a wide linear range from 11 pM to 55 nM. The biosensor exhibits excellent specificity over $A\beta_{1-40}$ and ApoE $\epsilon 4$ interfering species. Thus, it provides a viable tool for electrochemical determination of $A\beta_{1-42}$. Spiked human and mice plasmas were used for the successful validation of the sensing platform in bio-fluidic samples. The results obtained from mice plasma analysis concurred with the immunohistochemistry (IHC) and magnetic resonance imaging (MRI) data obtained from brain analysis.

Keywords Graphene · $A\beta_{1-42}$ detection · Alzheimer's disease · Electrochemical biosensors · Screen-printed electrodes

Introduction

The current trend in the realm of medical science is to investigate the molecular basis of ailments as opposed to following a symptomatic approach. This has prompted remarkable improvements in research for chronic ailments such as Alzheimer's disease (AD). Abnormal levels of certain biomarkers in bio-fluids have been associated with AD

progression [1]. One such biomarker is beta-amyloid ($A\beta$) peptide consisting of 40 and 42 amino acids, namely $A\beta_{1-40}$ and $A\beta_{1-42}$. Their abnormal levels in bio-fluids have been correlated with amyloid pathology in AD-affected brain [2]. The continuous monitoring of $A\beta$ levels could provide aid in early diagnosis, before the onset of symptoms [3]. As a result, several platforms including enzyme-linked immunosorbent assay (ELISA) [4], surface-enhanced spectroscopy (SERS) [5], surface plasmon resonance (SPR) [6], electrochemical sensors [7–9] and field effect transistors [10] have been developed. Among these, electrochemical sensors are most attractive and, therefore, widely preferred. This is attributed to various merits such as high sensitivity [3], possibility of label-free sensing, portability [11], simplicity of apparatus and easy handling [9]. However, electrochemical platforms developed for $A\beta_{1-42}$ detection have shown various limitations. These include lack of bio-fluid analysis, low sensitivity and non-specific bindings particularly with $A\beta_{1-40}$ [12].

An interdigitated microelectrode system was recently developed for the detection of $A\beta_{1-42}$. The electrode was used alongside a signal cancellation and amplification processing system (SCAP) [3]. The platform was validated with mice plasma samples. Despite excellent sensitivity, use of an

Electronic supplementary material The online version of this article (<https://doi.org/10.1007/s00604-020-04267-x>) contains supplementary material, which is available to authorized users.

✉ Jagriti Sethi
jagriti.sethi@plymouth.ac.uk

¹ Wolfson Nanomagnetism Laboratory, School of Engineering, Computing and Mathematics, University of Plymouth, Devon PL4 8AA, UK

² Instituto de Investigaciones Biomédicas (CSIC-UAM), Arturo Duperier, 4, 28029 Madrid, Spain

³ Centro de Investigación Biomédica en Red sobre Enfermedades Neurodegenerativas (CIBERNED), Valderrebollo, 5, 28031 Madrid, Spain

additional SCAP system makes the platform more complex and expensive. The specificity of the sensor is also questionable towards $A\beta_{1-42}$ in the presence of interfering $A\beta_{1-40}$ and ApoE species [13]. Another biosensor based on gold (Au) electrode and mercaptopropionic acid self-assembled monolayer (SAM) reported high sensitivity [2]. However, the platform failed to depict specificity against any interfering species present in the complex bio-fluids. With $A\beta_{1-42}/A\beta_{1-40}$ ratios gaining interest as a potential biomarker, reliable detection of individual biomarker is more important than ever [14, 15]. In addition, deposition of $A\beta_{1-42}$ starts earlier compared with $A\beta_{1-40}$ during AD progression [16]. The interference with ApoE $\epsilon 4$ species can also prompt false results when analysing $A\beta_{1-42}$ in patients' samples. This is due to the fact that ApoE $\epsilon 4$ can be present in up to 10,000-fold excess in human plasma [17]. Therefore, specific determination of $A\beta$ biomarkers is an important prerequisite for bio-fluid analysis and understanding AD progression.

Graphene is a widely investigated material due to its remarkable properties such as high conductivity, biocompatibility, ease of surface functionalization [18], large surface to volume ratio and low environmental impact [19]. Graphene-based biosensors can detect extremely low concentration of biomarkers [1]. This is attributed to the fact that presence or absence of a very few analyte molecules can trigger a recognizable change in electrical properties of graphene. Another material which is widely preferred for biosensors is reduced graphene oxide (rGO). It has structural similarities to graphene with large number of electroactive sites providing highly sensitive material for sensing [18]. Most of the graphene-based biosensors are based on either only graphene [20] or only rGO [21]. A combination of the two materials for the detection of protein biomarkers is yet to be explored. The conductivity of rGO on graphene is much higher than on other materials such as carbon [22]. Coupling of rGO and graphene provides high conductivity with large number of available active sites which can be useful for biosensing. The rGO surface can be chemically functionalized to anchor antibodies on the surface [23] which can be achieved by covalent or non-covalent modifications. The covalent modification may damage and degrade the properties of rGO [24]. Therefore, non-covalent modification methods are a preferred choice. 1-Pyrenebutyric acid *N*-hydroxysuccinimide ester (Pyr-NHS) is a bi-functional molecule which binds non-covalently to graphene and carbon surfaces [25, 26]. It promotes strong immobilization of antibodies without any adverse effect on the underlying structure. This has shown to improve sensitivity for detection of clusterin, another well-known biomarker of AD [25]. Thus, Pyr-NHS is an excellent linker for the immobilization of probes on the graphene biosensors.

In the present work, graphene/rGO dual-layer screen-printed electrode (SPE) is developed for rapid, label-free and reliable detection of $A\beta_{1-42}$. Higher redox current is observed

for dual-layer SPE, confirming its improved sensitivity compared with only graphene and graphene/GO SPE. The immobilization of H31L21 antibody achieved via Pyr-NHS leads to high specificity of the biosensor towards $A\beta_{1-42}$ peptides without damaging underlying rGO structure. The interaction of Pyr-NHS with rGO on a dual-layer surface is reported for the first time. The platform shows wide linear dynamic range with low detection limit. To the best of our knowledge, this is the first report of a biosensor depicting specificity against $A\beta_{1-40}$ and ApoE $\epsilon 4$ interfering species as well as high sensitivity. The biosensor has been successfully validated with both spiked human and mice plasma samples. Detailed comparison of dual-layer SPE over the existing label-free biosensors are made in Table 1.

Experimental

Reagents and animals

Single-layer graphene oxide dispersion in water was purchased from Graphene Supermarket (USA) (<https://graphene-supermarket.com/>). Chemicals such as bovine serum albumin (BSA), 1-pyrenebutyric acid *N*-hydroxysuccinimide ester (Pyr-NHS), phosphate buffered saline (PBS), human plasma, $A\beta_{1-42}$ peptides, potassium ferricyanide ($K_3Fe(CN)_6$) and potassium chloride (KCl) at biochemical grade were purchased from Sigma-Aldrich (Dorset, UK) (<https://www.sigmaaldrich.com/united-kingdom.html>). $A\beta_{1-42}$ antibody (H31L21), 4',6-Diamidino-2-Phenylindole (DAPI) and Alexa Fluor 546 goat anti-rabbit secondary antibody were provided by Thermo Fisher Scientific (<https://www.thermofisher.com/uk/en/home.html>). $A\beta_{1-40}$ and ApoE $\epsilon 4$ peptides were obtained from Tocris (UK) (<https://www.tocris.com/>). Paraformaldehyde (PFA) was purchased from Merck (Spain) (<https://www.merckgroup.com/es-es>). Sucrose, Triton X-100 and Eppendorf® LoBind Microcentrifuge Tubes were obtained from Sigma-Aldrich (Spain) (<https://www.sigmaaldrich.com/spain.html>). Normal Goat Serum (NGS) and Vectashield H-1200 were provided by Vector Laboratories (Spain) (<https://vectorlabs.com/>). Microvette® CB 300 K2E tubes were obtained from Sarstedt (Spain) (<https://www.sarstedt.com/en/home/>).

Blood and brain samples were obtained from 9 and 12 months old wild-type (WT) and transgenic (Tg) animals of the strain B6.Cg-Tg (APP^{swe}/PSEN1^{de9}) 85Dbo/Mmjax, Lab Stock# 005864. All the experiments related to the animals were performed in the Centro de Investigación Biomédica en Red Enfermedades Neurodegenerativas (CIBERNED), Spain. The ethical approval was provided by the "Ethics Committee for Animal Experimentation" of the Instituto de Investigaciones Biomédicas (CSIC-UAM) and experiments were carried out in accordance with European Communities

Table 1 An overview of recently reported label-free electrochemical methods for determination of A β _{1–42}

Substrate	Materials used	Detection technique	LOD	Specificity studies	Matrices	References
Au electrode	Au NPs/mercaptopropionic acid SAM	SWV	1.15 pM	–	PBS	[2]
SiO ₂	Glutaraldehyde/PVP-CHO/3-aminopropyl triethoxysilane	Impedance analysis, noise cancellation system	–	Prostate-specific antigen and brain-derived neurotrophic factor	PBS, Plasma	[3]
Au ICE	EDC-NHS/6-mercaptopentanoic acid SAM	EIS	15.5 pM, 20 pM*	Tumour necrosis factor- α , insulin, C-reactive protein	PBS, serum	[8]
Carbon printed chip	Protein G/16-mercaptopentadecanoic acid SAM/Au NPs	EIS	570 pM	–	PBS	[11]
GCE	AuNPs/MWCNTs	DPV	28 pM	–	Rat brain (in vivo)	[27]
Au film	EDC-NHS/3-mercaptopentanoic acid SAM	DPV	–	Tau	PBS, serum	[28]
Graphene/rGO SPE	Pyr-NHS	DPV	2.398 pM	A β _{1–40} and ApoE ϵ 4	PBS, Plasma	This work

* Values were converted from pg mL⁻¹ to pM

Council Directive (2010/63/EEC) and National regulations (Normative 53/2013).

Plasma studies with biosensors were performed in the University of Plymouth, UK, with approval of Local Ethics Committee.

Apparatus

Graphene-modified SPEs and μ Stat potentiostat were provided by Metrohm DropSens (UK). The electrode had graphene as working, carbon as an auxiliary and silver as a reference electrode. Electrochemical cyclic voltammetry (CV) and differential pulse voltammetry (DPV) measurements were performed at room temperature with a μ Stat potentiostat. The experiments were controlled using DropView 8400 2.0 software. The μ Stat cable connector (ref. DRP-CAST) was used as an interface between the potentiostat and SPEs.

Raman spectra were obtained using XPLORA HORIBA system and Olympus BX41 microscope. The system used a 532-nm laser source, power of 100 mW, \times 100 objective lens, a scan range of 1100 to 2000 cm⁻¹ and an exposure time of 5–60 s.

Immunofluorescence data was collected using a Nikon Eclipse 90i microscope using Plan APO 4x objective, equipped with Nikon DS-Fi1 digital camera. It was connected to Nis-Elements software (Madrid, Spain).

Magnetic resonance imaging (MRI) was performed on a Bruker Pharmascan Biospect system (Bruker Medical GmbH, Ettlingen, Germany). The system was equipped with a 7.0-T horizontal-bore superconducting magnet, ¹H receive-only mouse brain surface coil and volume transmission coil and a Bruker gradient insert (maximum intensity 36 G cm⁻¹). All data was acquired using a Hewlett-Packard console running on Paravision 5.1 software (Bruker Medical GmbH, Germany). Sensor with monitor system (SA Instruments, Stony Brook, NY) was used to measure the rate and depth of respiration.

The Thermo Scientific™ Nexsa™ system was used for carrying out the X-ray photoelectron spectrum (XPS) analysis. The morphological analysis was done with JEOL 6610 LV scanning electron microscope (SEM) from Oxford Instruments.

Fabrication of biosensor

The graphene/rGO dual-layer SPE was prepared using the protocol mentioned in our previous work [18]. Briefly, an aqueous solution of 0.15 mg mL⁻¹ GO was prepared in deionized (DI) water. The solution was then carefully drop casted onto the surface and dried for 2 h at room temperature. This promotes strong bond formation of GO on graphene SPE. After that, the SPE was washed 3 times with DI water. GO layer was then electrochemically reduced in 10 mM K₃[Fe(CN)₆] containing 1 M KCl solution by one CV cycle. A scan rate of 100 mV s⁻¹ was applied, and potential was varied between 0.5 and -1.5 V [18]. In the next step, the

dual-layer SPE was incubated in 5 mM Pyr-NHS (in methanol) for 2 h at room temperature. Subsequently, it was incubated overnight (16 h) in $20 \mu\text{g mL}^{-1}$ of $\text{A}\beta_{1-42}$ antibody (H31L21) at 4°C . Then, electrodes were rinsed with PBS to remove any unbound antibody. This was followed by blocking of the surface with 2% BSA (in PBS) for 2 h at room temperature. The schematic representation of the fabrication process is described in Fig. 1.

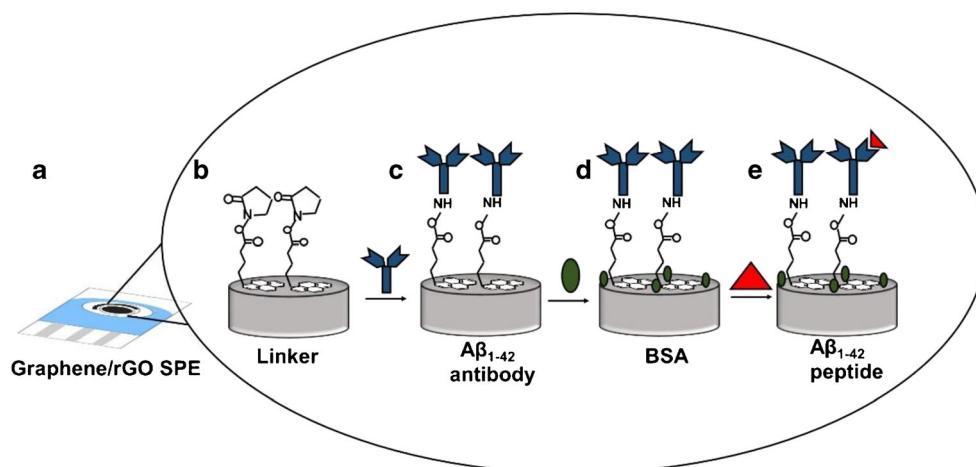
Interaction of $\text{A}\beta_{1-42}$ with the sensor

The desired dilutions of $\text{A}\beta_{1-42}$ peptides (0.2 pM to 55 nM) were freshly prepared in PBS by sonication for 2 min. The prepared peptides were kept on ice during the experiments to avoid their aggregation. Then, $20 \mu\text{L}$ of solution was drop casted onto the modified SPE and incubated at room temperature for 60 min. After that, the sensor was washed 3 times before the measurements to remove any unbound peptide. The measurement time for one sensor is approximately 3–4 min.

Blood sampling method

Blood was drawn by submandibular bleeding methods using a sterile blood lancet [29]. The blood droplets were collected by Microvette® CB 300 K2E tubes. A novel standardized method of blood extraction and purification protocol was developed to obtain non-haemolytic plasma samples from rodents. It consisted of two centrifuge steps. The first centrifuge step ($1500 \times g$ for 10 min at 15°C) was performed soon after the blood collection, to separate the plasma fraction from red blood cells and buffy coat. Then, the plasma fraction was collected in Eppendorf® LoBind Microcentrifuge Tubes and directly placed on ice. The second centrifuge step ($3500 \times g$ for 10 min at 4°C) was carried out to separate additional red blood cell debris. Finally, the plasma was divided in aliquots and stored at -80°C for long-term preservation.

Fig. 1 Schematic representation of the electrochemical system for detection of $\text{A}\beta_{1-42}$: **a** graphene/rGO SPE modified with linker (**b**), antibody (**c**), BSA (**d**) and $\text{A}\beta_{1-42}$ peptide (**e**)



Plasma sample analysis

Dual-layer SPE was validated with both mice and human plasma. The plasma from human was spiked with desired concentration of $\text{A}\beta_{1-42}$. Then, $20 \mu\text{L}$ of spiked plasma was drop casted on to the biosensors for 60 min. Mice plasma samples were analysed in a similar way without any pretreatment.

Electrochemical detection

All the measurements were carried out in an electrolyte solution containing 10 mM potassium ferricyanide solution with 1 M KCl as the supporting electrolyte. CV was recorded from -0.2 to $+0.5$ V potential and 0.05 V s^{-1} scan rate without the application of any preconditioning potential or accumulation time. For DPV, potential was measured from -0.15 to $+0.45$ V with a step potential of 0.01 V, pulse amplitude of 0.05 V, pulse period of 0.4 s and a scan rate of 0.05 V s^{-1} .

Immunohistochemistry (IHC)

Double immunofluorescence analysis was performed with brain sections of animals, obtained as previously described [30]. Briefly, animals were anesthetized followed by transcardial perfusion. After this, brains were extracted and postfixed with 4% PFA and 30% sucrose solution overnight at 4°C . Subsequently, $30 \mu\text{m}$ coronal section were obtained using a cryostat. The selected free floating cortical-hippocampal section was blocked in 0.1 M phosphate buffer (PB) containing 3% NGS and 0.1% Triton X-100 for 1 h at room temperature. It was then incubated with $\text{A}\beta_{1-42}$ primary antibody (H31L21), overnight at 4°C . Several washes were performed in 0.1 M PB containing 0.1% Triton X-100. Then, the sections were incubated for 1 h with a secondary antibody, Alexa Fluor 546 goat anti-rabbit. Nuclei staining was performed using DAPI. Finally, the brain sections were mounted

with Vectashield H-1200, and fluorescence microscope images were performed. The images were processed by ImageJ software using stitching method [31].

Results and discussion

Characterization of the biosensor

The Raman spectra of graphene and graphene/rGO SPE are shown in Fig. 2. In case of graphene (blue), there is a weak peak around 1346 cm^{-1} and a strong peak around 1574 cm^{-1} . These can be attributed to the D and G band vibrations of graphene with intensity ratio of D to G band (I_D/I_G) equal to 0.1. Further, in case of graphene/rGO (black), wider peaks are observed around 1346 cm^{-1} and around 1574 cm^{-1} . Here, intensity of D band is slightly higher than G band, resulting in a higher I_D/I_G ratio of 1.05. The ratio I_D/I_G indicates average distance between defective sites. It increases when the oxygen functionalities on GO are partly removed with electrochemical reduction [32].

The CV of graphene and graphene/rGO dual-layer SPE were recorded from -0.2 to $+0.5\text{ V}$ at a scan rate of 50 mV s^{-1} in $10\text{ mM [Fe(CN)}_6]^{3-/4-}$ and 1 M KCl . The data was acquired at a working potential of 118 mV . Figure 3a shows a comparison in the voltammograms of graphene (blue), graphene/GO (red) and graphene/rGO dual-layer SPE (black). The modification of graphene with GO leads to a decrease in peak current. This is attributed to the long-range broken conjugated network of GO due to a large number of oxygen functional groups. Electrochemical reduction of GO leads to the formation of graphene/rGO dual-layer with higher peak currents compared with only graphene and graphene/GO-modified SPE. This is due to a combination of inherited electroactive sites from rGO and high conductivity of graphene [18].

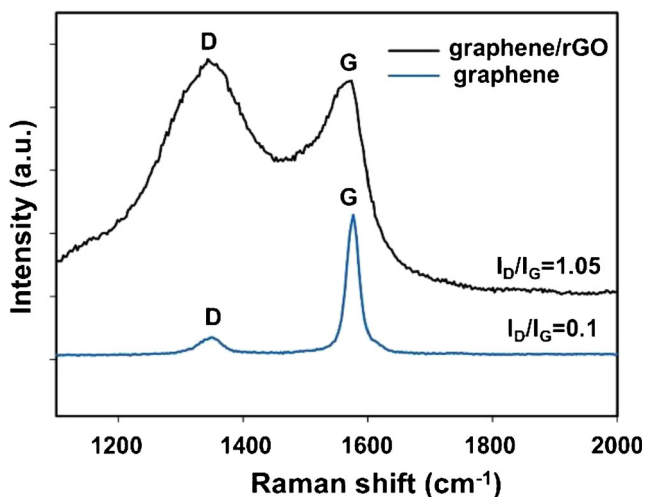


Fig. 2 Raman spectra of graphene (blue) and graphene/rGO (black) dual-layer SPE

For the fabrication of biosensor, voltammograms were recorded after each surface modification step. This includes graphene/rGO (blue), linker (red), antibody (black) and BSA (purple) as shown in Fig. 3b. The data was acquired at a working potential of 118 mV . It exhibits details relating to the kinetics of charge transfer of the redox probe $[\text{Fe(CN)}_6]^{3-}$ from solution to the electrode. This provides information about the interfacial properties of different layers on the surface. Assembly of linker decreases the anodic peak current (I_{pa}) from 281.033 to $168.628\text{ }\mu\text{A}$. This is due to an increase in the electron transfer resistance as it acquires available electroactive sites on rGO. The pyrene moiety binds to the rGO surface via non-covalent bonding (π - π interaction), whereas ester group forms an amide bond (covalent bonding) with the antibody [25]. The I_{pa} increases to $214.987\text{ }\mu\text{A}$ after the immobilization of antibody. This is attributed to the presence of free NH_3^+ groups (epsilon amines) present on the antibody. These groups accelerate electron transfer between electrode and $[\text{Fe(CN)}_6]^{3-/4-}$ system. Immobilization of BSA decreases the I_{pa} to $199.534\text{ }\mu\text{A}$ as it acquires free functional groups on the surface. This minimizes the chances of non-specific binding.

Scan rate studies (10 to 200 mV s^{-1}) of the modified SPE were performed to study redox process taking place at the surface. Peak to peak separation was found to be dependent on the scan rate indicating a quasi-reversible process. Both cathodic and anodic peak currents increase with an increment in scan rate (Fig. 4a). A linear correlation ($R^2 = 0.99$) was obtained for current versus square root of scan rate (Fig. 4b). This is attributed to surface controlled diffusion of $[\text{Fe(CN)}_6]^{3-/4-}$ with no surface adsorption and is an important requirement for electrochemical biosensors [18]. Randles-Sevcik [25] equation was used for calculating the diffusion coefficient of the redox couple:

$$I_p = 2.69 \times 10^5 A \sqrt{D} (\sqrt{n})^3 \sqrt{v} C_0 \quad (1)$$

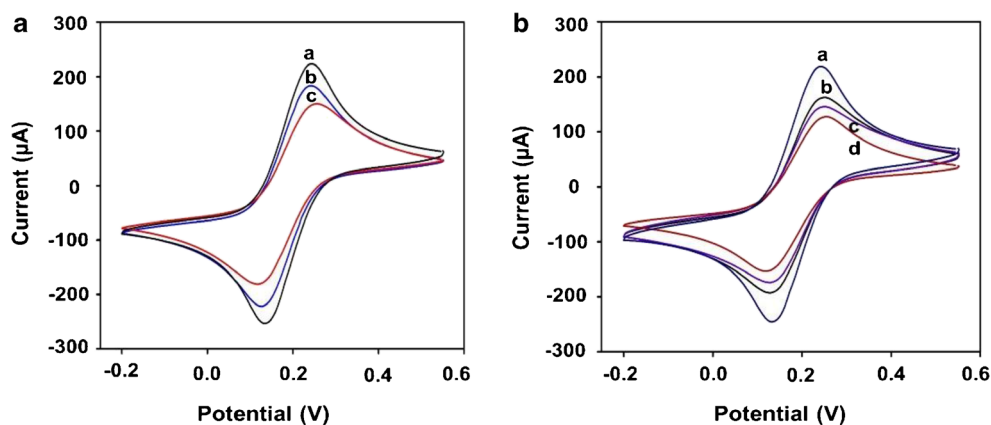
where I_p is peak current of the electrode (in Ampere), A is the surface area in cm^2 (0.126 cm^2), D stands for the diffusion coefficient in $\text{cm}^2\text{ s}^{-1}$, n denotes the number of transferred electrons ($n = 1$), v denotes the scan rate (V s^{-1}) and C_0 is the concentration of the redox couple ($10\text{ mM [Fe(CN)}_6]^{3-/4-}$). The value of D was found to be $1.414 \times 10^{-6}\text{ cm}^2\text{ s}^{-1}$ which is in close agreement with the value of $7.26 \times 10^{-6}\text{ cm}^2\text{ s}^{-1}$ in the literature [33].

The heterogeneous electron transfer rate constant (K_s) was calculated for the modified SPE using the Laviron model:

$$K_s = \frac{mnFv}{RT} \quad (2)$$

where m is peak to peak separation (0.12 V), n is number of transferred electrons (1), F is the Faraday constant ($96,485.34\text{ C mol}^{-1}$), v denotes scan rate (V s^{-1}), R is

Fig. 3 Cyclic voltammograms for the modification of SPE with a graphene/rGO (a), graphene (b) and graphene/GO (c); b graphene/rGO (a), antibody (b), BSA (c) and linker (d), and the CV was taken in 1 M PBS containing 10 mM $[\text{Fe}(\text{CN})_6]^{3-}$ and 1 M KCl solution at a scan rate of 50 mV s^{-1}



universal gas constant ($8.314 \text{ J mol}^{-1} \text{ K}^{-1}$) and T is absolute temperature (298 K). Value of K_s was calculated to be 0.23 s^{-1} at a scan rate of 50 mV s^{-1} . This indicates fast electron transfer at the surface of SPE due to large electroactive sites and high conductivity of dual-layer.

Optimization of sensor parameters

The following parameters were optimized: (a) incubation time of antibody and (b) concentration of linker; respective data and figures are given in the electronic supporting material. The following experimental conditions were found to give best results: (a) concentration of linker, 5 mM, and (b) incubation time of antibody, 16 h.

Analytical performance of the biosensor

Under optimized condition, sensitivity of the biosensor was evaluated against a wide range of concentration from 0.2 pM to 55 nM using DPV. The results were acquired at a working potential of $\sim 180 \text{ mV}$ and a scan rate of 50 mV s^{-1} . The current output of biosensor is shown as a function of different concentrations of $\text{A}\beta_{1-42}$ in Fig. 5a. The peak current

decreased with the increase in concentration. The calibration plot of normalized current (I_c/I_{blank}) versus concentrations (in pM) is shown in Fig. 5b with a linear regression coefficient ($R^2 = 0.97$). The error bars were calculated based on 3 replicates of each experiment. The LOD was calculated as 2.398 pM using the following equation:

$$\text{LOD} = 3.3 * (\text{SD} / \text{SL}) \quad (3)$$

where SD is standard deviation of the normalized peak current value of lowest detectable concentration and SL is the slope of calibration plot. The excellent sensing response can be attributed to the sensitive structure of the biosensor. Graphene provides good electrocatalytic activity and electrochemical inertness [18], and rGO provides large electroactive sites. Pyr-NHS shows strong π - π interaction with the graphene/rGO dual-layer due to hydrophobic pyrenyl moiety base. Bioactive ester (NHS) group forms strong amide bond with the H31L21 antibody [25] resulting in a target-specific platform. However, fabrication process of the biosensor involves long incubation hours, particularly for antibody immobilization step. In addition, orientation of the antibodies on the surface is difficult to control and can reduce the capture efficiency [34].

Fig. 4 Scan rate studies of modified SPE a voltammograms under varying scan rates a-i (10, 25, 50, 75, 100, 125, 150, 175 and 200 mV s^{-1}); b anodic (I_{pa}) and cathodic (I_{pc}) peak currents versus the square root of corresponding scan rate

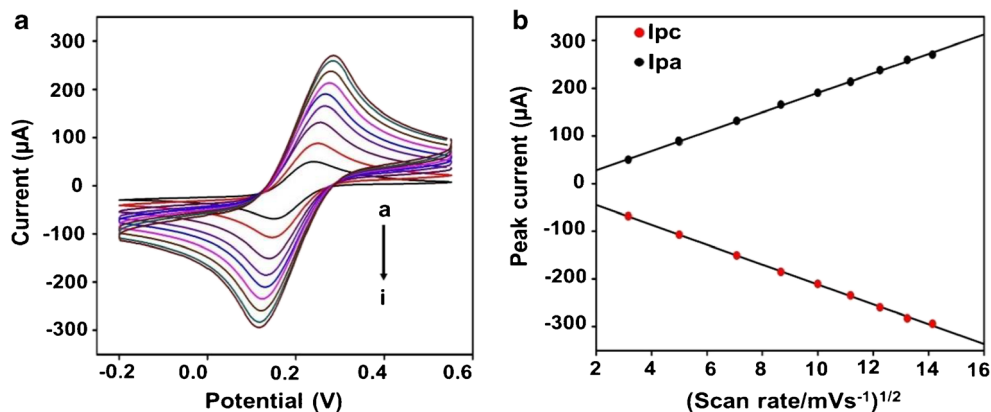
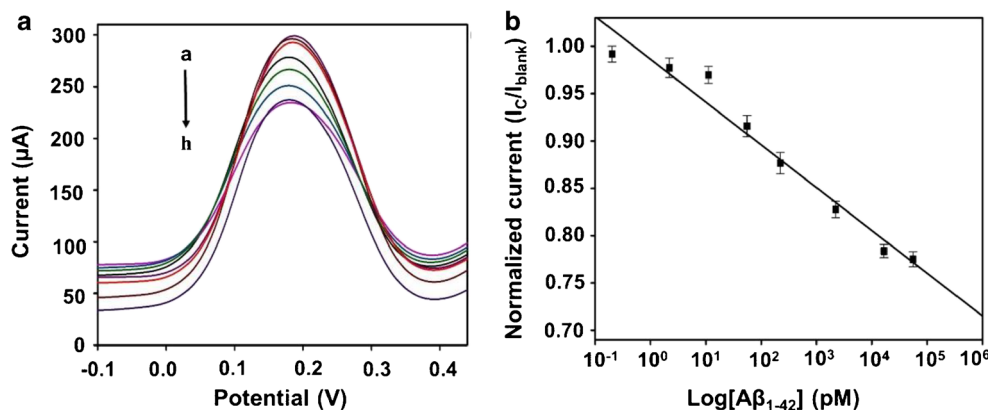


Fig. 5 Analytical performance of the biosensor **a** DPV curves obtained for the biosensor for detection of different concentration of $A\beta_{1-42}$ from a-h (0.2, 2, 11, 50, 220, 2200, 16,600 and 55,000 pM); **b** Calibration plot representing normalized current (I_C/I_{blank}) of DPV data as a function of $A\beta_{1-42}$ concentration on a logarithmic scale ($n = 3$)



Specificity studies

The specificity towards $A\beta_{1-42}$ was analysed using the DPV measurements. The modified SPE was incubated in blank (PBS buffer without protein), 50 pM of $A\beta_{1-42}$ and 500 nM of $A\beta_{1-40}$ and ApoE $\epsilon 4$ biomarkers. The higher concentration of interfering species was used to ensure the specificity of sensor in complex fluids such as plasma. The bar graphs obtained from the normalized peak currents were plotted as shown in Fig. 6. Only $A\beta_{1-42}$ sample gave a significant decrease, whereas the interfering species were almost equivalent to the blank sample. These results illustrate high specificity of the biosensor towards the $A\beta_{1-42}$ species.

Plasma sample analysis

Blood-based analysis of AD biomarkers is emerging as an alternative to the established strategies [35, 36]. This is attributed to the fact that blood sampling technique is less complex and minimally invasive and, therefore, can be applied to large communities. As a result, the

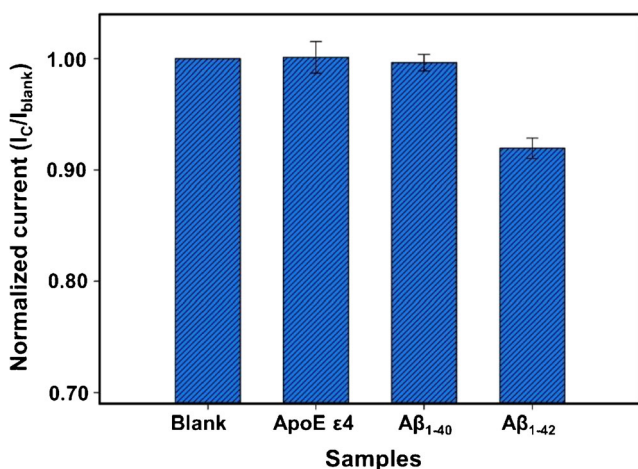


Fig. 6 Specificity of the biosensor for the detection of 50 pM of $A\beta_{1-42}$ with 500 nM of interfering agents: $A\beta_{1-40}$ and ApoE $\epsilon 4$

biosensor was validated with blood plasma (in a series of two experiments) to check the applicability for bio-fluid analysis. In the first experiment, human plasma was spiked with known concentrations (50, 220, 2200 and 16,600 pM) of $A\beta_{1-42}$. The DPV curves at varying concentration of spiked antigen and its calibration plot are shown in Fig. 7a, b. The sensing platform displayed high linearity in human plasma ($R^2 = 0.98$).

In the second experiment, plasma samples obtained from 9 and 12-months-old WT and Tg mice were analysed without any pretreatment. The Tg mouse is an expression of a chimeric mouse and human amyloid precursor protein (Mo/HuAPP695swe). It also overexpresses a mutant human presenilin 1 (PS1-dE9) gene. Both mutations are associated with early-onset AD. Therefore, these animals are humanized models and produce human $A\beta$ peptide species (e.g. $A\beta_{1-42}$). These $A\beta_{1-42}$ species can be detected by specific antibody that either recognize human or mice sequence or both of them [37]. For this reason, human $A\beta_{1-42}$ antibody (H31L21) was used for validation of mice samples using the biosensor. The DPV results shown in Fig. 7c display a much larger shift in peak current for Tg mice as opposed to WT mice. This indicates a higher $A\beta_{1-42}$ concentration in plasma of Tg mice. An age-based study was also performed as shown in Fig. 7d. As seen, a higher normalized current (I_C/I_{blank}) is observed in case of 12 months in contrast to 9-month-old mice plasma. This is attributed to the decrease in concentration of $A\beta_{1-42}$ in the plasma of older mice with the progression of AD. However, a larger sample size (>6) is needed for further validation of the biosensor before it can be employed for the determination of patients' sample.

The immunohistochemistry (IHC) data shows a higher accumulation of $A\beta_{1-42}$ in both cortex and hippocampus region. It increases with age for Tg mice compared with WT mice (Fig. 8). This increase in $A\beta$ plaques burden leads to decrease in plasma $A\beta_{1-42}$ levels observed in Fig. 7(d) [38]. The correlation in the IHC and sensing data further confirms the reliability of the platform for plasma sample analysis. The magnetic resonance imaging (MRI) data of the 12-month-old mice

Fig. 7 DPV responses from spiked concentration of $A\beta_{1-42}$ (50 (a), 220 (b), 2200 (c) and 16,600 (d) pM) in human plasma (a); calibration plot of normalized current (I_C/I_{blank}) versus log of $A\beta_{1-42}$ concentration (b); DPV responses for detection of WT (b) and Tg (c) mice compared with blank response (a); an age-based study with the two groups (9 and 12 months) of Tg animals (d) ($n = 3$)

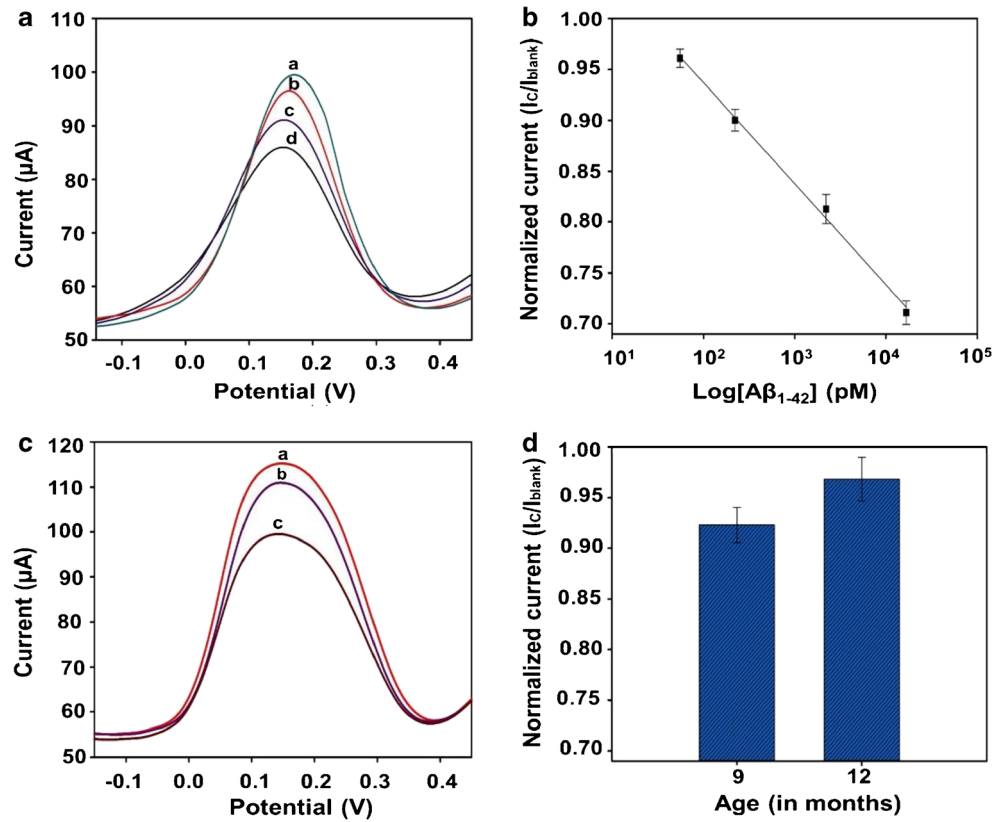
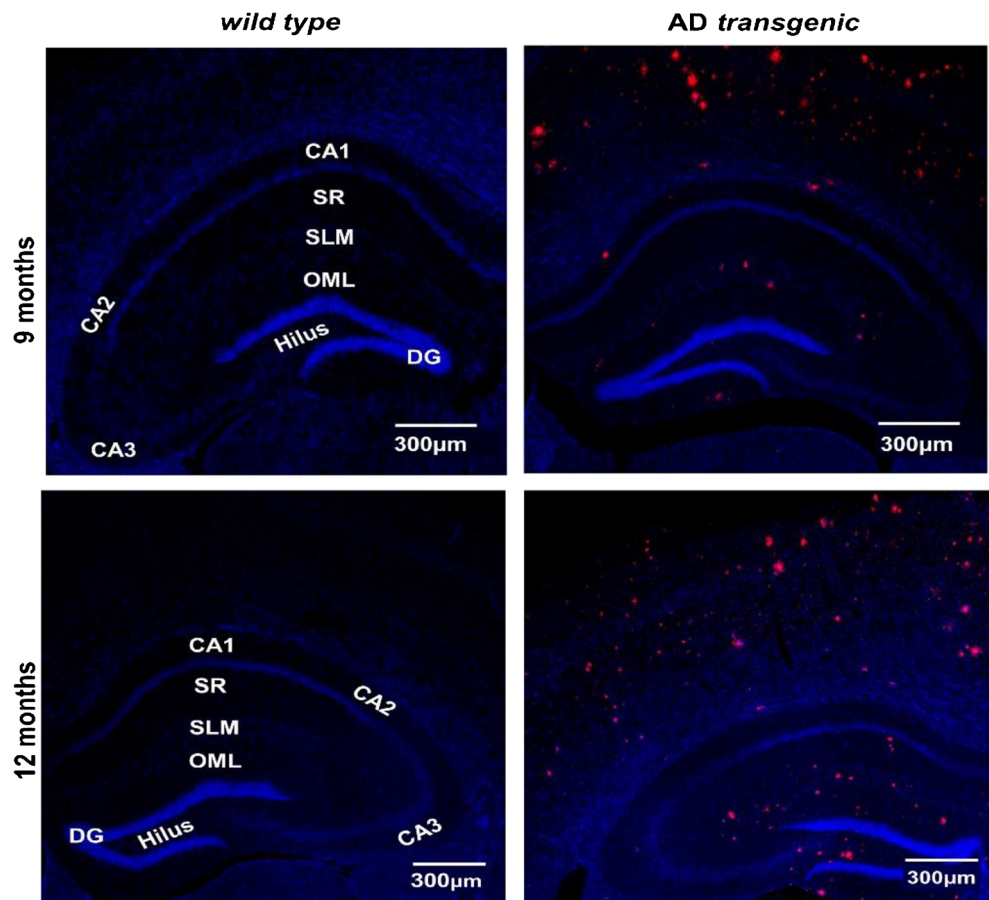


Fig. 8 IHC data for the progression of AD pathology: An increase of human-specific $A\beta_{(1-42)}$ (red) aggregation in cortex and hippocampal area; especially in stratum radiatum (SR), stratum lacunosum-moleculare (SLM) and outer portion of the molecular layer of dentate gyrus (OML) and the hilus of the dentate gyrus (DG), from 9 to 12-months-old Tg compared with E littermates. Cornu ammonis (CA1, CA2, CA3 and hilus (CA4)) are sub-field of the hippocampus; nuclei staining is in blue



was collected. It also depicts A β plaques accumulation in cortex and hippocampus area of the brain (electronic supplementary information Fig. S5).

Conclusion

In summary, graphene/rGO dual-layer SPE was developed for highly sensitive and label-free detection of A β_{1-42} . The immobilization of antibodies was achieved via Pyr-NHS molecule. Its pyrene moiety binds to rGO via non-covalent bonding, and ester group forms strong amide bonds with antibody. The sensor depicted high specificity towards A β_{1-42} over interfering A β_{1-40} and ApoE ϵ 4 species. It shows excellent performance for human and mice plasma analysis. Age-based study of mice samples exhibited a decrease in levels of A β_{1-42} with the disease progression (from 9 to 12 months old). This was attributed to the increased A β_{1-42} accumulation in 12-month-old mice shown by the IHC and MRI studies. However, the present study has few limitations. Firstly, the orientation of antibodies on the surface is random which can decrease the capture efficiency and affect the sensitivity of the platform. Secondly, fabrication process of the biosensor is time-consuming due to long incubation hours. Despite this, use of SPEs makes the fabrication process inexpensive and less complex with a possibility of mass production on a large scale. These can also be integrated with point of care devices to develop routine diagnostic tools for AD. For the future work, more comprehensive studies will be conducted using a larger sample size to verify the applicability of biosensor in identifying different stages of AD.

Funding information This work was financially supported by H2020 MSCA-ITN-ETN BBDiag project under grant no. 721281. Scanning electron microscopy was performed by the Plymouth Electron Microscopy Centre (PEMC). X-ray photoelectron microscopy was performed by Harwellxps.

Compliance with ethical standards

Conflict of interest The authors declare that they have no conflict of interest.

Ethical approval The ethical approval was provided by the “Ethics Committee for Animal Experimentation” of the Instituto de Investigaciones Biomédicas (CSIC-UAM), and experiments were carried out in accordance with European Communities Council Directive (2010/63/EEC) and National regulations (Normative 53/2013).

Open Access This article is licensed under a Creative Commons Attribution 4.0 International License, which permits use, sharing, adaptation, distribution and reproduction in any medium or format, as long as you give appropriate credit to the original author(s) and the source, provide a link to the Creative Commons licence, and indicate if

changes were made. The images or other third party material in this article are included in the article's Creative Commons licence, unless indicated otherwise in a credit line to the material. If material is not included in the article's Creative Commons licence and your intended use is not permitted by statutory regulation or exceeds the permitted use, you will need to obtain permission directly from the copyright holder. To view a copy of this licence, visit <http://creativecommons.org/licenses/by/4.0/>.

References

- Balasubramanian K, Kern K (2014) 25th anniversary article: label-free electrical biodetection using carbon nanostructures. *Adv Mater* 26(8):1154–1175. <https://doi.org/10.1002/adma.201304912>
- Carneiro P, Loureiro J, Delerue-Matos C, Morais S, do Carmo Pereira M (2017) Alzheimer's disease: development of a sensitive label-free electrochemical immunosensor for detection of amyloid beta peptide. *Sensors Actuators B Chem* 239:157–165. <https://doi.org/10.1016/j.snb.2016.07.181>
- Yoo YK, Kim J, Kim G, Kim YS, Kim HY, Lee S, Cho WW, Kim S, Lee S-M, Lee BC (2017) A highly sensitive plasma-based amyloid- β detection system through medium-changing and noise cancellation system for early diagnosis of the Alzheimer's disease. *Sci Rep* 7(1):8882
- Gagni P, Sola L, Cretich M, Chiari M (2013) Development of a high-sensitivity immunoassay for amyloid-beta 1–42 using a silicon microarray platform. *Biosens Bioelectron* 47:490–495. <https://doi.org/10.1016/j.bios.2013.03.077>
- Beier HT, Cowan CB, Chou I-H, Pallikar J, Henry JE, Benford ME, Jackson JB, Good TA, Coté GL (2007) Application of surface-enhanced Raman spectroscopy for detection of beta amyloid using nanoshells. *Plasmonics* 2(2):55–64. <https://doi.org/10.1007/s11468-007-9027-x>
- Zhao Z, Zhu L, Bu X, Ma H, Yang S, Yang Y, Hu Z (2015) Label-free detection of Alzheimer's disease through the ADP3 peptoid recognizing the serum amyloid-beta42 peptide. *Chem Commun* 51(4):718–721. <https://doi.org/10.1039/C4CC07037B>
- Yuede CM, Lee H, Restivo JL, Davis TA, Hettinger JC, Wallace CE, Young KL, Hayne MR, Bu G, C-z L, Cirrito JR (2016) Rapid in vivo measurement of β -amyloid reveals biphasic clearance kinetics in an Alzheimer's mouse model. *J Exp Med* 213(5):677–685. <https://doi.org/10.1084/jem.20151428>
- Ngoc Le HT, Park J, Chinnadaiyala SR, Cho S (2019) Sensitive electrochemical detection of amyloid beta peptide in human serum using an interdigitated chain-shaped electrode. *Biosens Bioelectron* 144:111694. <https://doi.org/10.1016/j.bios.2019.111694>
- Dai Y, Molazemhosseini A, Liu CC (2017) In vitro quantified determination of β -amyloid 42 peptides, a biomarker of neurodegenerative disorders, in PBS and human serum using a simple, cost-effective thin gold film biosensor. *Biosensors* 7(3):29. <https://doi.org/10.3390/bios7030029>
- Oh J, Yoo G, Chang YW, Kim HJ, Jose J, Kim E, Pyun J-C, Yoo K-H (2013) A carbon nanotube metal semiconductor field effect transistor-based biosensor for detection of amyloid-beta in human serum. *Biosens Bioelectron* 50:345–350. <https://doi.org/10.1016/j.bios.2013.07.004>
- Lien TTN, Takamura Y, Tamiya E, Vestergaard MC (2015) Modified screen printed electrode for development of a highly sensitive label-free impedimetric immunosensor to detect amyloid beta peptides. *Anal Chim Acta* 892:69–76. <https://doi.org/10.1016/j.aca.2015.08.036>
- Hassan Q, Kerman K (2019) Electrochemical approaches for the detection of amyloid- β , tau, and α -synuclein. *Curr Opin*

- Electrochem 14:89–95. <https://doi.org/10.1016/j.coelec.2018.12.009>
13. Henriksen K, O'Bryant SE, Hampel H, Trojanowski JQ, Montine TJ, Jeromin A, Blennow K, Lönneborg A, Wyss-Coray T, Soares H, Bazenet C, Sjögren M, Hu W, Lovestone S, Karsdal MA, Weiner MW (2014) The future of blood-based biomarkers for Alzheimer's disease. *Alzheimers Dement* 10(1):115–131. <https://doi.org/10.1016/j.jalz.2013.01.013>
 14. Graff-Radford NR, Crook JE, Lucas J, Boeve BF, Knopman DS, Ivnik RJ, Smith GE, Younkin LH, Petersen RC, Younkin SG (2007) Association of low plasma A β 42/A β 40 ratios with increased imminent risk for mild cognitive impairment and Alzheimer disease. *Arch Neurol* 64(3):354–362
 15. Lambert J-C, Schraen-Maschke S, Richard F, Fievet N, Rouaud O, Berr C, Dartigues J-F, Tzourio C, Alperovitch A, Buee L (2009) Association of plasma amyloid β with risk of dementia: the prospective Three-City Study. *Neurology* 73(11):847–853
 16. Mehta PD, Pirttilä T, Mehta SP, Sersen EA, Aisen PS, Wisniewski HM (2000) Plasma and cerebrospinal fluid levels of amyloid β proteins 1-40 and 1-42 in Alzheimer disease. *Arch Neurol* 57(1):100–105. <https://doi.org/10.1001/archneur.57.1.100>
 17. Martínez-Morillo E, Hansson O, Atagi Y, Bu G, Minthon L, Diamandis EP, Nielsen HM (2014) Total apolipoprotein E levels and specific isoform composition in cerebrospinal fluid and plasma from Alzheimer's disease patients and controls. *Acta Neuropathol* 127(5):633–643. <https://doi.org/10.1007/s00401-014-1266-2>
 18. Li B, Pan G, Avent ND, Lowry RB, Madgett TE, Waines PL (2015) Graphene electrode modified with electrochemically reduced graphene oxide for label-free DNA detection. *Biosens Bioelectron* 72:313–319. <https://doi.org/10.1016/j.bios.2015.05.034>
 19. Geim AK, Novoselov KS (2010) The rise of graphene. In: *Nanoscience and Technology: A Collection of Reviews from Nature Journals*. World Scientific, pp 11–19
 20. Li S-S, Lin C-W, Wei K-C, Huang C-Y, Hsu P-H, Liu H-L, Lu Y-J, Lin S-C, Yang H-W, Ma C-CM (2016) Non-invasive screening for early Alzheimer's disease diagnosis by a sensitively immunomagnetic biosensor. *Sci Rep* 6(1):25155. <https://doi.org/10.1038/srep25155>
 21. Jeong D, Kim J, Chae M-S, Lee W, Yang S-H, Kim Y, Kim SM, Lee JS, Lee JH, Choi J, Yoon DS, Hwang KS (2018) Multifunctionalized reduced graphene oxide biosensors for simultaneous monitoring of structural changes in amyloid- β 40. *Sensors (Basel)* 18(6):1738. <https://doi.org/10.3390/s18061738>
 22. Su Q, Pang S, Alijani V, Li C, Feng X, Müllen K (2009) Composites of graphene with large aromatic molecules. *Adv Mater* 21(31):3191–3195
 23. Wu D, Zhang F, Liu P, Feng X (2011) Two-dimensional nanocomposites based on chemically modified graphene. *Chem Eur J* 17(39):10804–10812. <https://doi.org/10.1002/chem.201101333>
 24. Georgakilas V, Otyepka M, Bourlinos AB, Chandra V, Kim N, Kemp KC, Hobza P, Zboril R, Kim KS (2012) Functionalization of graphene: covalent and non-covalent approaches, derivatives and applications. *Chem Rev* 112(11):6156–6214
 25. Islam K, Damiani S, Sethi J, Suhail A, Pan G (2018) Development of a label-free immunosensor for clusterin detection as an Alzheimer's biomarker. *Sensors* 18(1):308
 26. Islam K, Suhail A, Pan G (2017) A label-free and ultrasensitive immunosensor for detection of human chorionic gonadotrophin based on graphene FETs. *Biosensors* 7(3):27
 27. Yu Y, Sun X, Tang D, Li C, Zhang L, Nie D, Yin X, Shi G (2015) Gelsolin bound β -amyloid peptides (1–40/1–42): electrochemical evaluation of levels of soluble peptide associated with Alzheimer's disease. *Biosens Bioelectron* 68:115–121. <https://doi.org/10.1016/j.bios.2014.12.041>
 28. Dai Y, Molazemhosseini A, Liu CC (2017) In Vitro Quantified Determination of β -Amyloid 42 Peptides, a Biomarker of Neuro-Degenerative Disorders, in PBS and Human Serum Using a Simple, Cost-Effective Thin Gold Film Biosensor. *Biosensors* 7(3):29. <https://doi.org/10.3390/bios7030029>
 29. Golde WT, Gollobin P, Rodriguez LL (2005) A rapid, simple, and humane method for submandibular bleeding of mice using a lancet. *Lab Anim* 34(9):39–43
 30. Luna-Medina R, Cortes-Canteli M, Sanchez-Galiano S, Morales-Garcia JA, Martinez A, Santos A, Perez-Castillo A (2007) NP031112, a thiazolidinone compound, prevents inflammation and neurodegeneration under excitotoxic conditions: potential therapeutic role in brain disorders. *J Neurosci* 27(21):5766–5776
 31. Preibisch S, Saalfeld S, Tomancak P (2009) Globally optimal stitching of tiled 3D microscopic image acquisitions. *Bioinformatics* 25(11):1463–1465
 32. Lucchese MM, Stavale F, Ferreira E, Vilani C, Moutinho M, Capaz RB, Achete C, Jorio A (2010) Quantifying ion-induced defects and Raman relaxation length in graphene. *Carbon* 48(5):1592–1597
 33. Baur JE, Wightman RM (1991) Diffusion coefficients determined with microelectrodes. *J Electroanal Chem Interfacial Electrochem* 305(1):73–81
 34. Yang Y, Huang Y, Li C (2019) A reusable electrochemical sensor for one-step biosensing in complex media using triplex-forming oligonucleotide coupled DNA nanostructure. *Anal Chim Acta* 1055:90–97. <https://doi.org/10.1016/j.aca.2018.12.031>
 35. Jeter CB, Hergenroeder GW, Hylin MJ, Redell JB, Moore AN, Dash PK (2012) Biomarkers for the diagnosis and prognosis of mild traumatic brain injury/concussion. *J Neurotrauma* 30(8):657–670. <https://doi.org/10.1089/neu.2012.2439>
 36. Kim H, Lee JU, Kim S, Song S, Sim SJ (2019) A nanoplasmonic biosensor for ultrasensitive detection of Alzheimer's disease biomarker using a chaotropic agent. *ACS Sensors* 4(3):595–602. <https://doi.org/10.1021/acssensors.8b01242>
 37. Jankowsky JL, Fadale DJ, Anderson J, Xu GM, Gonzales V, Jenkins NA, Copeland NG, Lee MK, Younkin LH, Wagner SL, Younkin SG, Borchelt DR (2003) Mutant presenilins specifically elevate the levels of the 42 residue β -amyloid peptide in vivo: evidence for augmentation of a 42-specific γ secretase. *Hum Mol Genet* 13(2):159–170. <https://doi.org/10.1093/hmg/ddh019>
 38. Janelidze S, Stomrud E, Palmqvist S, Zetterberg H, van Westen D, Jeromin A, Song L, Hanlon D, Tan Hehir CA, Baker D, Blennow K, Hansson O (2016) Plasma β -amyloid in Alzheimer's disease and vascular disease. *Sci Rep* 6:26801. <https://doi.org/10.1038/srep26801> <https://www.nature.com/articles/srep26801#supplementary-information>

Publisher's note Springer Nature remains neutral with regard to jurisdictional claims in published maps and institutional affiliations.