

2017-04-24

# Eurasian ice-sheet dynamics and sensitivity to subglacial hydrology

Gudlaugsson, E

<http://hdl.handle.net/10026.1/9118>

---

10.1017/jog.2017.21

Journal of Glaciology

Cambridge University Press (CUP)

---

*All content in PEARL is protected by copyright law. Author manuscripts are made available in accordance with publisher policies. Please cite only the published version using the details provided on the item record or document. In the absence of an open licence (e.g. Creative Commons), permissions for further reuse of content should be sought from the publisher or author.*

# Eurasian ice-sheet dynamics and sensitivity to subglacial hydrology

EYTHOR GUDLAUGSSON,<sup>1</sup> ANGELIKA HUMBERT,<sup>2,3</sup> KARIN ANDREASSEN,<sup>1</sup>  
CAROLINE C. CLASON,<sup>4</sup> THOMAS KLEINER,<sup>2</sup> SEBASTIAN BEYER<sup>2</sup>

<sup>1</sup>Department of Geology, Centre for Arctic Gas Hydrate, Environment and Climate (CAGE), UiT – The Arctic University of Norway, Tromsø, Norway

<sup>2</sup>Section of Glaciology, Alfred Wegener Institute Helmholtz Center for Polar and Marine Research, Bremerhaven, Germany

<sup>3</sup>Department of Geosciences, University of Bremen, Bremen, Germany

<sup>4</sup>School of Geography, Earth and Environmental Sciences, Plymouth University, Plymouth, UK

Correspondence: Eythor Gudlaugsson <[eythor.gudlaugsson@gmail.com](mailto:eythor.gudlaugsson@gmail.com)>

**ABSTRACT.** Ice-stream dynamics are strongly controlled by processes taking place at the ice/bed interface where subglacial water both lubricates the base and saturates any existing, underlying sediment. Large parts of the former Eurasian ice sheet were underlain by thick sequences of soft, marine sediments and many areas are imprinted with geomorphological features indicative of fast flow and wet basal conditions. Here, we study the effect of subglacial water on past Eurasian ice-sheet dynamics by incorporating a thin-film model of basal water flow into the ice-sheet model SICOPOLIS and use it to better represent flow in temperate areas. The adjunction of subglacial hydrology results in a smaller ice-sheet building up over time and generally faster ice velocities, which consequently reduces the total area fraction of temperate basal ice and ice streaming areas. Minima in the hydraulic pressure potential, governing water flow, are used as indicators for potential locations of past subglacial lakes and a probability distribution of lake existence is presented based on estimated lake depth and longevity.

**KEYWORDS:** glacier hydrology, ice dynamics, ice-sheet modelling, subglacial lakes

## 1. INTRODUCTION

During the Weichselian glacial period, large parts of the Arctic were ice covered. At its maximum the Eurasian ice sheet, consisting of both the Barents Sea ice sheet (BSIS) and the Fennoscandian ice sheet (FSIS), merged with the Celtic ice sheet in the south-west and extended all the way up the north continental shelf (Fig. 1), covering both the Barents and the Baltic Seas (Svendsen and others, 2004a). A close historical equivalent to the West Antarctic ice sheet (WAIS) is the former BSIS. At the Last Glacial Maximum (LGM) the two ice sheets were more or less equivalent in both size and volume but whereas the BSIS completely disappeared, the WAIS endured (Anderson and others, 2002; Svendsen and others, 2004a; Evans and others, 2006). Both ice sheets were grounded largely below sea level and both had large, dynamic ice streams that drained them (Andreassen and Winsborrow, 2009). The BSIS thus constitutes a close geological analogue to WAIS and its history can provide important insights into the future evolution of the WAIS. Subglacial hydrology is thought to have played a crucial role in the relatively fast disintegration of the BSIS (Winsborrow and others, 2010; Bjarnadóttir and others, 2014).

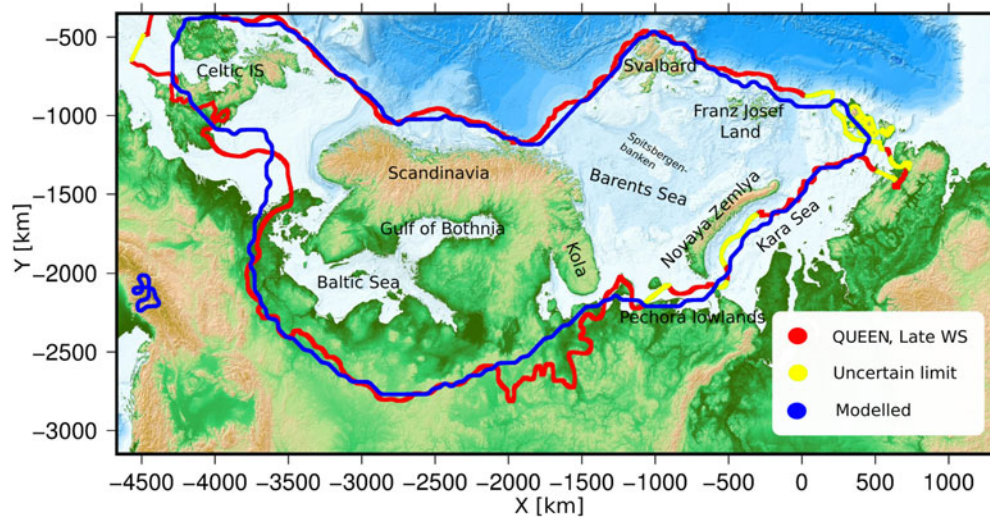
Temperate ice and subglacial meltwater are typically found either underneath very thick ice due to the geothermal flux and the insulating properties of ice or in areas of high deformation and/or frictional resistance such as closer to the margin (Siegert and others, 1996). Any subglacial meltwater that forms will drain from areas of high pressure potential towards areas with lower potential. Components of the subglacial drainage network can in general be divided into two different categories or subsystems; (1) an efficient system consisting of fast flowing water in channels carved into ice, bedrock or sediment (Röthlisberger, 1972; Nye

and Frank, 1973), exhibiting low water pressures compared with ice overburden or (2) an inefficient system, exhibiting high water pressure, such as sheet flow (thin film) (Weertman, 1966) or flow through connected cavities (Lliboutry, 1968) or porous sediment (Shoemaker, 1986). Real drainage networks comprise a combination of the two and tend to have both diurnal and seasonal cycles (van de Wal and others, 2008; Andrews and others, 2014).

Subglacial water lubricates the ice base by effectively separating it from the underlying bed and decreasing the area and force of contact between the two (Iken, 1981; Schoof, 2010). Within the sediment column, increasing pore water pressures decrease its yield strength, mainly by separating sediment particles from one another, leading to easier and faster sediment deformation (Tulaczyk and others, 2000). Rapidly moving corridors of ice, ice streams, typically move mostly by either basal slip or by deformation of the underlying sediments, both of which are highly dependent on the availability of subglacial water. In modern-day ice sheets, up to 90% of mass is lost through these fast flowing corridors of ice (Bamber and others, 2000). Inclusion of these processes in numerical ice-sheet models is therefore of vast importance for the estimation of future ice loss in polar regions and changes in global sea level. By studying the dynamics of extinct ice sheets and how models respond to perturbations in external forcing we can learn much about how modern ice sheets are likely to respond to a changing climate in the future.

### 1.1. Previous modelling studies

The Eurasian ice sheet has previously been modelled with 3-D thermomechanically coupled ice-sheet models such as by Payne and Baldwin (1999) who established a connection



**Fig. 1.** A map showing the study area as well as the modelled and reconstructed extent of the Eurasian ice sheet at the LGM. The reconstructed extent based on geological evidence from Svendsen and others (2004a) is shown in red with uncertain limits in green and modelled extent is shown in blue (for  $S_w = 6$ ).

between past ice streaming and fan-like landform assemblages on a hard-rock area of the Baltic Shield. Although neither accounting for the Barents Sea part of the ice sheet nor subglacial sliding in general, their model output matched reasonably well with available empirical data of the time. Geological and geophysical data from the former Eurasian ice sheet as a whole were later summarized and used for a geological reconstruction of the Quaternary ice sheet development (Svendsen and others, 2004a, b). As part of the same program, the Quaternary Environment of the Eurasian North (QUEEN), Siegert and Dowdeswell (2004) used an inverse modelling approach to simulate the Eurasian ice sheets growth and decay, during the late Weichselian, matching the geological evidence presented. They varied climatic inputs in order to optimize the fit between model evolution and empirical data. Another modelling approach was adopted by Forsström and Greve (2004) who used the shallow ice approximation (SIA) numerical model, SICOPOLIS (Simulation COde for POLythermal ice sheets), as we do in this study. Their model, although fitting the western limits well, extensively overglaciated the eastern part of the ice sheet, which prompted them to introduce LGM anomalies, or strong west-east gradients in temperature and precipitation forcings, in order to reduce the extent of glaciation in the east, over the Kara Sea and the Pechora lowlands. SICOPOLIS was again used by Clason and others (2014) who improved upon previous models by incorporating a parametrization of surface meltwater enhanced sliding (SMES). They produced a model fitting well with empirical data and again confirmed the necessity of strong west-east gradients in both temperature and precipitation to reduce glaciation in the east.

Here, we further build upon the Clason model, introducing a simple representation of the subglacial hydrological system, focussing specifically on the influence of subglacial-water-enhanced sliding on ice dynamics and the temporal evolution of the FSIS and the BSIS, without the inclusion of SMES. In addition, we use the hydrological model to deduce probable locations of past subglacial lakes, their temporal perseverance, size and probability of existence.

## 2. MODELLING APPROACH

### 2.1. Ice-sheet model

We use the thermodynamically coupled ice-sheet model SICOPOLIS (Greve, 1997) in order to simulate the FSIS and the BSIS. SICOPOLIS is a 3-D, polythermal, two-layer model (temperate and cold ice) that uses a simplified set of equations (SIA) to calculate ice velocities, thickness, age, temperature and water content. Ice is treated as an incompressible fluid where strain rates are related to deviatoric stresses via Glen's flow law (Glen, 1955). Ice viscosity depends on temperature, water content and effective strain-rate (Duval, 1977; Paterson and Budd, 1982; Duval and Lliboutry, 1985). The SIA is incapable of correctly reproducing ice streams as higher order stresses are neglected although one can mimic their effect through enhanced sliding in temperate regions. Large-scale behaviour of ice sheets is generally well represented however. The model was run, with a horizontal grid size ( $\Delta x$ ) of 40 km and a time step ( $\Delta t$ ) of 10 a, for 250 ka to allow for sufficient spin-up time and to minimize any errors arising from arbitrarily chosen initial conditions, although we only present results from the last 100 ka with a special focus on the final 30 ka of the Weichselian (40–10 ka) as this is the main study period.

Isostatic adjustment follows the local-lithosphere-relaxing-asthenosphere approach where an ice load causes a local displacement of the lithosphere, balanced by a buoyancy force of the viscously deforming asthenosphere (Greve and Blatter, 2009). Compared with computationally more expensive lithosphere treatments where elasticity is accounted for, the local approach results in a slightly more spatially-concentrated and less smooth isostatic response as there is no lateral effect beyond the ice load of each computational cell (as there is with an elastic lithosphere approach) (Le Meur and Huybrechts, 1996). This effect is not too pronounced though and mostly significant in regions with large ice-thickness gradients, such as close to the ice margins (Greve and Blatter, 2009).

Ice shelves are not treated explicitly, but instead the model is allowed to glaciate the seafloor above a certain threshold

depth (1000 m). When ice moves into deeper water, ice thickness is set to zero, which can be considered as a crude form of calving. Sensitivity studies show little dependence on this threshold depth, with the main differences between this and the typically used lower threshold of 500 m being that a small area within the North Sea resists glaciation for the lower threshold (Clason and others, 2014).

## 2.2. Climate forcing

We employ the same climatic forcing as in Clason and others (2014) where climatic conditions were linked to the NorthGRIP  $\delta^{18}\text{O}$  ice core record and a synthetic Greenland ice core record based on Antarctic data and the thermal bipolar seesaw model (Andersen and others, 2006; Wolff and others, 2010; Barker and others, 2011). Temperatures and precipitation were scaled between present day and LGM conditions using a combination of CFSR (Climate Forecast System Reanalysis) data for present-day conditions (Uppala and others, 2005; Saha and others, 2010; Dee and others, 2011) and IPSL (Institut Pierre Simon Laplace) CM5A-LR for LGM conditions (Kageyama and others, 2013). In order to get a realistic ice-sheet extent, comparable with that compiled by Svendsen and others (2004a), a linear gradient, from the west to the east, on the LGM temperature data was imposed, reducing temperatures in the west and raising them in the east. For further details see Clason and others (2014).

## 2.3. Subglacial hydrology

Following (Kleiner and Humbert, 2014) we use a subglacial water-flow model where water is assumed to flow in a thin film between the underlying substrate and the ice (Johnson and Fastook, 2002; Le Brocq and others, 2009). The time dependent water depth ( $d$ ) is given by:

$$\frac{\partial d}{\partial t} = M - \nabla(\mathbf{u}_w d), \quad (1)$$

where  $M$  is the basal melt rate, computed at every time step, and  $\mathbf{u}_w$  is the depth-averaged water velocity. A second equation relating water depth and differences in water pressure to the water velocity can be obtained by assuming that the flow can be described as laminar flow between two parallel plates as (Weertman, 1972):

$$\mathbf{u}_w = \frac{d^2}{12\mu} \nabla\Phi, \quad (2)$$

where  $\mu$  is the viscosity of the water and  $\Phi$  the hydraulic potential. The latter can be written in terms of water pressure  $\rho_w$  and an elevation potential

$$\Phi = \rho_w g z_b + p_w, \quad (3)$$

where  $\rho_w$  is the density of water,  $g$  the gravitational acceleration and  $z_b$  is the height of the bedrock relative to some fixed datum (WGS84, Polar Stereographic projection).

Water pressure can in turn be described by the ice overburden pressure ( $H$  is ice thickness,  $\rho_i$  is ice density) minus the effective pressure  $N$

$$p_w = \rho_i g H - N. \quad (4)$$

Here, we assume that the effective pressure is everywhere equal to zero (Shreve, 1972), which simplifies the pressure potential to a purely geometrical equation where the potential gradient is described as a function of the surface and the bedrock gradient

$$\nabla\Phi = \rho_i g \nabla z_s + (\rho_w - \rho_i) g \nabla z_b, \quad (5)$$

where  $z_s$  represents the elevation of the ice surface.

It is assumed that the timescales governing water flow are much shorter than those governing the flow of ice and that Eqn (1) thus reaches steady state ( $\partial d/\partial t = 0$ ) within each time step of the ice flow model. Water fluxes are calculated recursively, at each time step, starting from the top of the hydraulic potential surface, in the direction of the hydraulic gradient following Budd and Warner (1996). For an overview of different, typically used flux routing numerical schemes see Le Brocq and others (2006).

## 2.4. Basal sliding

We employ a Weertman-type sliding law that relates the basal shear stress and velocity (Weertman, 1957)

$$\mathbf{u}_b = -C_b |\tau_b|^{p-1} \tau_n^{-q} \tau_b, \quad (6)$$

where  $\mathbf{u}_b$  is the basal horizontal velocity,  $\tau_b$  the basal shear stress and  $\tau_n$  basal normal pressure, which is taken to be equal to the ice overburden pressure. The sliding law is extended in order to allow for sliding at sub-melt temperatures and the thickness of the water layer following Kleiner and Humbert (2014) and Johnson and Fastook (2002).

$$C_b = (1 + f_w) f_T C_b^0, \quad (7)$$

$$f_w = (S_w - 1) \left[ 1 - \exp\left(-\frac{d}{d_0}\right) \right], \quad (8)$$

where  $f_T = \exp(v(T - T_{\text{pmp}}))$ ,  $v$  is the sub-melt sliding parameter,  $T$  temperature,  $T_{\text{pmp}} = T_0 - \beta p$  the pressure dependent melting point,  $C_b^0$  is a basal sliding parameter that depends for example on bed material and roughness, ( $d_0$ ) is a typical scale of water layer thickness (here equal to 1 mm or  $10^{-3}$  m) and  $S_w$  is the maximum increase in sliding velocity due to subglacial water. Here, we test three different values for  $S_w$ , [1, 3, 6] representing a maximum of a six fold increase in sliding velocity due to the water layer. A two part mask is used for bed roughness ( $C_b^0$ ), a background value of  $11.2 \text{ m a}^{-1} \text{ Pa}^{-1}$  and  $33.6 \text{ m a}^{-1} \text{ Pa}^{-1}$  where the bed is considered to consist of a thick deformable layer of soft sediment (Clason and others, 2014). Numerical values for all other parameters discussed are presented in Table 1.

## 2.5. Subglacial lakes

Model output, such as basal melt rates, temperature, ice thickness and isostatic adjustment are interpolated onto high resolution grids in a post-processing step, for a selection of time slices every 250 years in the period 40–10 ka, and used along with modern day topographic maps of the study area (General Bathymetric Chart of the Oceans (GEBCO), Weatherall and others (2015)) for high resolution calculations of meltwater routing (1 km grid size). These can be used to infer possible locations of subglacial lakes and their

**Table 1.** Model parameters discussed in the paper

Parameter	Numerical value
$\mu$ , Viscosity of water	1.8 m Pa s <sup>-1</sup>
$\rho_w$ , Density of water	1000 kg m <sup>-3</sup>
$\rho_i$ , Density of ice	910 kg m <sup>-3</sup>
$g$ , Gravitational acceleration	9.81 m s <sup>-2</sup>
$(p, q)$ , Sliding coefficients	(3, 2)
$C_b^0$ , Sliding parameter	[11.2, 33.6] m a <sup>-1</sup> Pa <sup>-1</sup>
$S_w$ , Sliding parameter	[1, 3, 6]
$d_0$ , Scaling factor	1 mm
$v$ , Sub-melt sliding parameter	1 K
$T_0$ , Melting point ( $p = 0$ )	273.15 K
$\beta$ , Clausius-Clapeyron constant	$9.8 \times 10^{-8}$ K Pa <sup>-1</sup>
$\Delta t$ , Model time step	10 years
$\Delta x$ , Model grid size	40 km

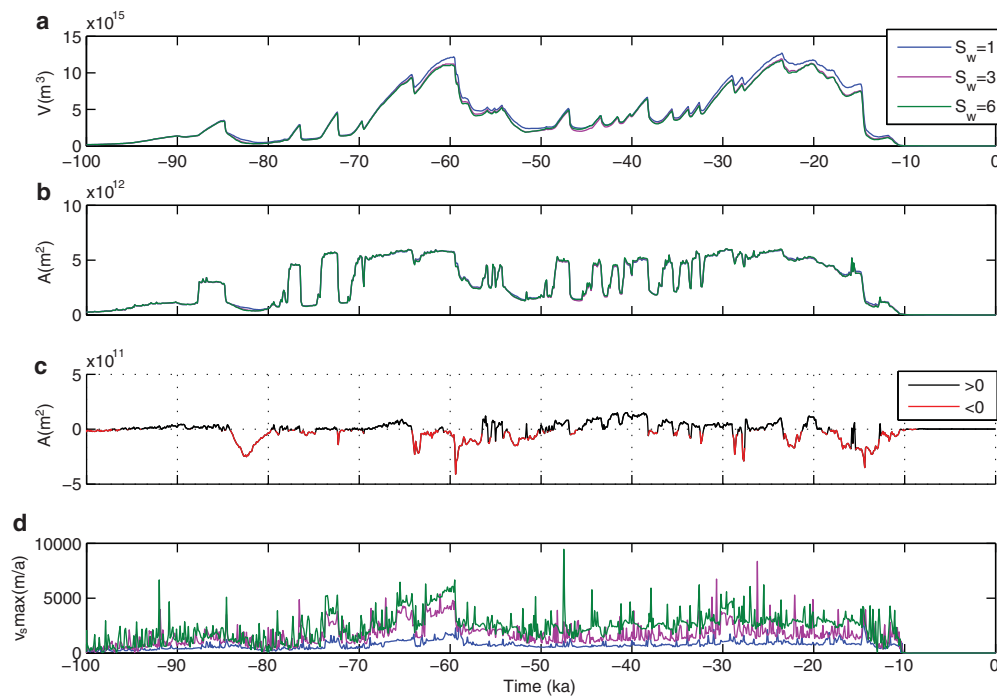
temporal duration. Before routing is calculated, any local minima (sinks) in the hydraulic potential need to be filled to brink, allowing water to continue further downstream. These local minima represent areas where subglacial water would be likely to pond on its way down the hydraulic potential. By mapping these out we get an idea of potential locations where subglacial lakes might have existed in the past and by looking at a selection of time slices we get a sense of how long they were likely to have persisted throughout changes in the ice-sheet state or configuration. The height to which the sinks need to be adjusted in order to eliminate them is used as a proxy to estimate the potential depth of each subglacial lake, assuming that the change in potential arises solely from a change in water depth (Eqn 3). By summing up the estimated volume of all lakes, we get a rough approximation of total water storage capacity in

subglacial lakes for the whole domain. Such a value is unlikely to be of very high accuracy, but relative changes in lake storage capacity with time might be considered to be more reliable. Additionally, although a water-film model is incapable of reproducing channels in a physically meaningful manner, areas where flow of meltwater converges to form a thick water layer can be considered to be likely locations where channels would have formed in the past (Livingstone and others, 2015).

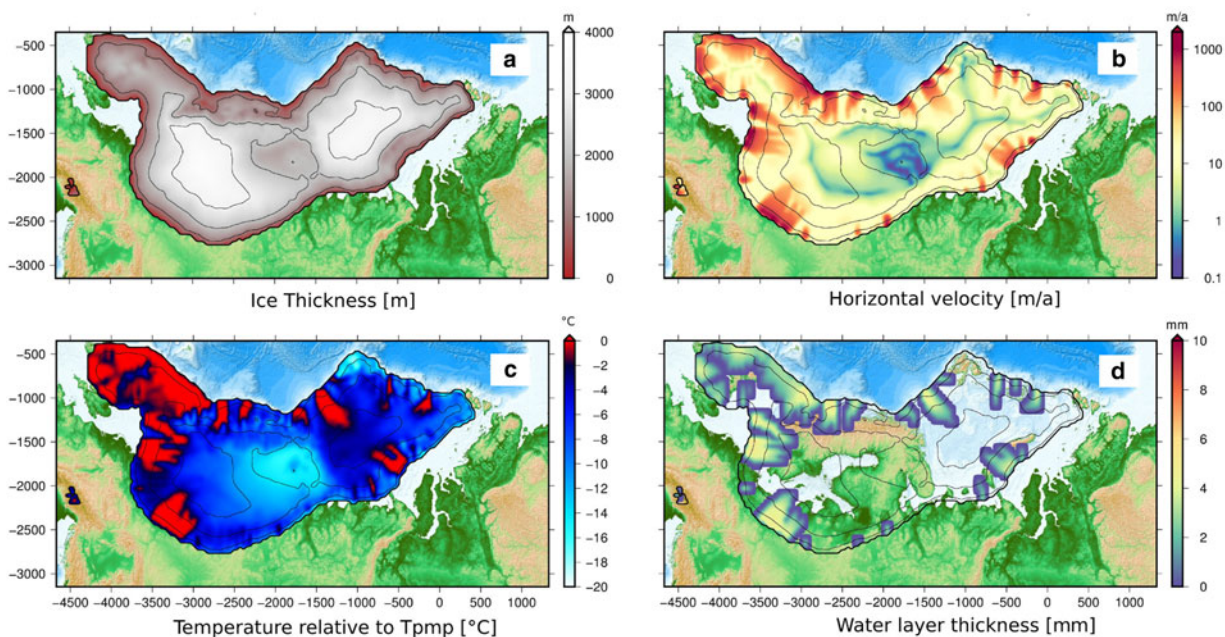
### 3. MODEL RESULTS

The model results show a two-peaked glacial maximum, with the latter peak occurring  $\sim 23.5$  ka when both area and volume are at a maximum. We will refer to this peak as the LGM. The ice-sheet extent at the LGM matches well with empirical data (Fig. 1) with relatively small differences in extent between model runs with or without water enhanced sliding (results for  $S_w = 1$  are the same as for model run 1 in Clason and others (2014)). Maximum thickness of 4125 m is reached slightly later, or at 19 ka for simulations with hydrology-coupled (HC,  $S_w > 1$ ) sliding. Maximum horizontal velocities are typically  $\sim 3000$  m a<sup>-1</sup> for  $S_w = 6$  with peak values approaching 10 km a<sup>-1</sup> over short time periods (Fig. 2c). A stronger coupling (higher  $S_w$ ) between sliding and water layer thickness results in a lower overall ice volume building up with time (Fig. 2a) although the areal extent is not greatly affected (Figs 2b, c). The ice sheet disintegrates rapidly shortly after 15 ka and by 10 ka has completely disappeared.

At the LGM, 20% of the ice-sheet base is estimated to be temperate, mostly close to the margin in ice streaming areas. The coldest part of the ice sheet at the LGM, with basal temperatures well below the pressure melting point is roughly



**Fig. 2.** Comparison between simulations with different values of the sliding parameter  $S_w$  for the last 100 ka. Blue in subfigures (a,b,d) represents simulations without HC sliding ( $S_w = 1$ ), purple  $S_w = 3$  and green  $S_w = 6$ . (a) shows total ice volume in m<sup>3</sup>, (b) shows total area coverage of glacial ice in m<sup>2</sup>, (c) shows the difference in total area between simulations with ( $S_w = 6$ ) and without ( $S_w = 1$ ) a thin water film. Black denotes points in time when areal coverage is larger for simulations without HC sliding and red otherwise. (d) shows the maximum horizontal velocity of the whole domain at each point in time in m a<sup>-1</sup>.



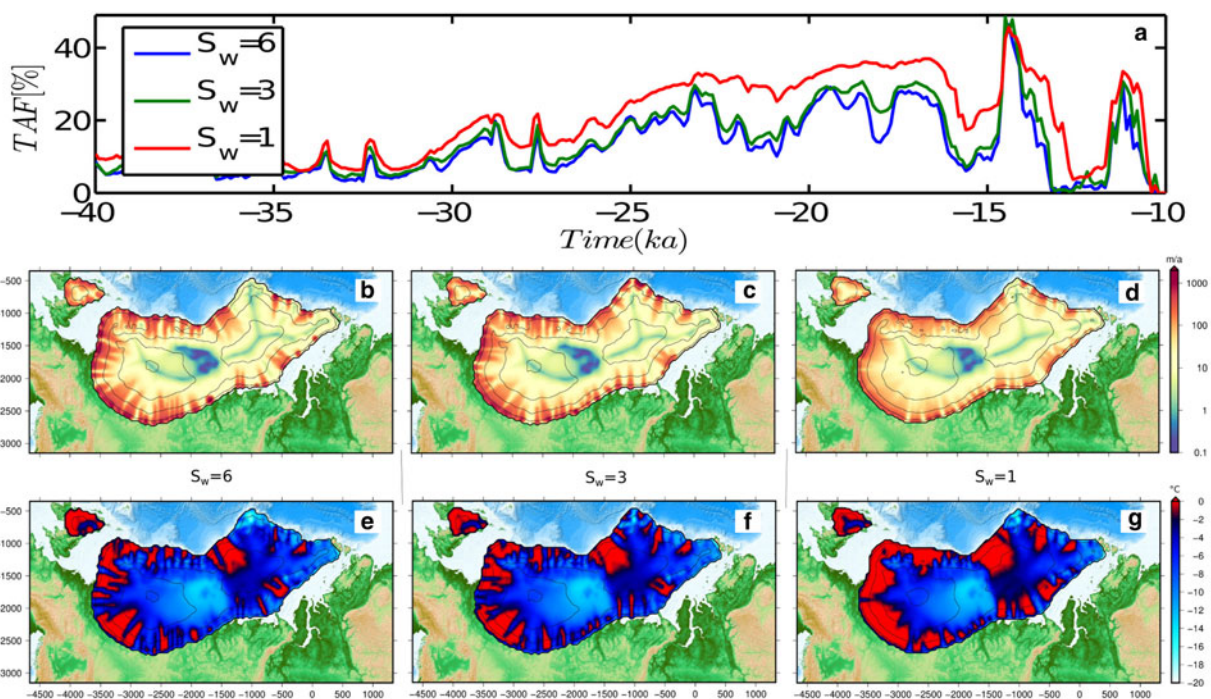
**Fig. 3.** (a) Ice sheet thickness in m, (b) horizontal velocity in  $\text{m a}^{-1}$ , (c) basal temperature relative to pressure melting point in  $^{\circ}\text{C}$  and (d) water layer thickness in mm for the  $S_w = 6$  sliding scenario at 23.5 ka, the point of maximum ice extent and volume.

over Finland, in the center of the domain (Fig. 3). This is also the thinnest part of the ice sheet at that time and therefore the part where basal temperatures are most influenced by the cold surface temperatures above. There, the ice velocities are close to zero during the LGM and only increase in that area during deglaciation when the ice sheet is smaller and the margin closer.

The model produces two major ice domes that merge  $\sim 34$  ka with one ice dome centered over the Gulf of Bothnia (FSIS) and the other over the Barents Sea (BSIS, Fig. 3a). The Fennoscandian dome then merges with the

Celtic IS shortly before the LGM, or  $\sim 26.5$  ka to produce one major ice sheet. The eastern extent of the ice sheet, in contrast to many previous modelling attempts, compares well with geological reconstructions (Fig. 1).

Incorporation of HC sliding improves the models ability to mimic ice streams and spatially confine their location. SIA generally produces broad areas of fast flow whereas the inclusion of hydrology-coupled sliding limits and confines fast-flowing areas to temperate areas with a thick water layer (Fig. 4) and thus better mimics real velocity patterns. Faster sliding leads to a reduction in the temperate area



**Fig. 4.** (a) TAF of the Eurasian ice sheet between 40 and 10 ka. (b,c,d) a comparison of horizontal velocity in  $\text{m a}^{-1}$  and temperature (e,f,g) in  $^{\circ}\text{C}$  relative to pressure melting point for the three sliding scenarios considered (at 20 ka). (b,e) are with  $S_w = 6$ , (c,f) with  $S_w = 3$  and (d,g) without HC sliding ( $S_w = 1$ ).

fraction (TAF) of basal ice, however, the width of ice streaming areas is probably still somewhat overestimated because of the limited grid resolution of the numerical model and simplified model physics.

Water is routed along the direction of the largest gradient according to Eqn (5) (Budd and Warner, 1996) and is limited to temperate areas of the ice sheet. The calculated thickness of the water layer used in the model rarely exceeds 6 mm (Fig. 3d), consistent with the thin-film assumption. No extra bedrock smoothing is applied before meltwater is routed along the base to the margin as the 40 km grid resolution already represents considerable averaging simply because of the large grid size.

An example of water layer thickness at 23.5 ka, using interpolated model results and modified high-resolution bathymetry (1 km grid size) is presented in Figure 5. Semicircular areas in red depict sinks in the hydraulic potential where water would likely pond on its way towards the margin and routing of subglacial water is limited to areas of the ice sheet with a temperate base.

Several subglacial lakes are predicted to have existed during the last glacial cycle (Fig. 6). Particularly in the Norwegian fjords and valleys as well as on the western side of Novaya Zemlya although the bathymetry data on either side of Novaya Zemlya is not of high quality. The island itself represents a significant hydrological barrier to subglacial flow of water with ice flowing generally from the west to the east, over the island and large parts of the area having a temperate base during much of the glaciation (Fig. 5). Few lakes probably existed in the Barents Sea area and on Svalbard compared with the Scandinavian mainland.

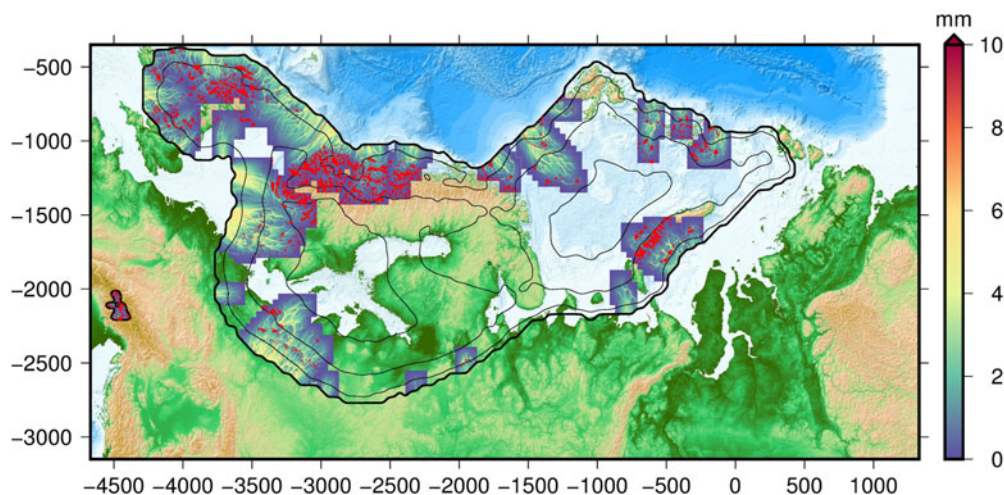
A criterion for the likelihood of a subglacial lake having existed is taken as the product of the estimated lake depth for each time slice and the time each cell persists as part of a subglacial lake. This is done with a grid resolution of 1 km both with and without smoothing (5 km) of the underlying bathymetry. Smoothing eliminates mostly small, shallow sinks of the hydrological potential that would otherwise show up as potential lakes. For completeness and in order to separate these small shallow areas from the deeper and larger potential lake locations, the routing is calculated without smoothing as well. These shallow areas are

represented by a yellow color in Figure 6. All grid cells are then ranked with the above criteria, normalized and given a score (H)igh, (M)edium or (L)ow based on the probability of each cell having been part of a subglacial lake, with H representing lakes that are both deep and temporally stable and can thus be considered to be more likely candidates. Each category contains one third of all cells marked as having pertained to a subglacial lake at some point.

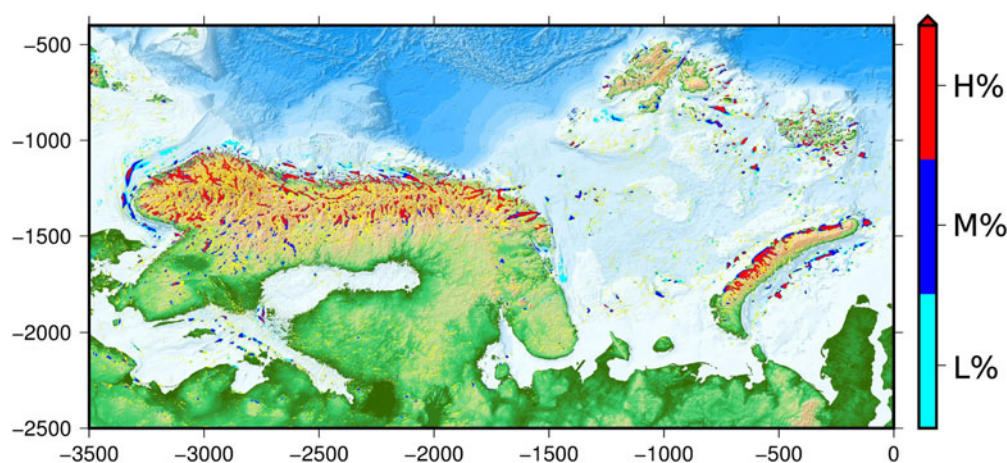
Figure 7 shows the temporal evolution of total lake storage capacity (LSC) as a function of time for the time period 40–10 ka. Changes in ice-sheet geometry, switches in the thermal regime or deflections of the lithosphere all affect the storage capacity of subglacial water. Here we have opted for the more conservative estimate of lake storage, assuming that any change necessary in the hydraulic potential needed to fill local minima would come from a change in water level alone, leaving ice thickness untouched. This leads to a total amount of stored water of the same order of magnitude as estimated for Antarctica (Pattyn, 2008). The LSC generally follows the ice-sheet evolution with sharp drops in volume and peaks in freshwater production associated with drops in LSC as well. The rate of loss in storage capacity of subglacial water can equal or surpass the amount of basal water produced during the same time, indicating that a considerable amount of subglacial water is poured out during deglacial periods. A larger more extensive ice sheet tends to support a greater storage of subglacial water underneath the ice sheet.

#### 4. DISCUSSION

Overall, the modelled LGM extent of the FSIS and the BSIS matches well with the geological reconstructions of the former ice sheets (Svendsen and others, 2004a, b), with the inclusion of subglacial hydrology representing a slight improvement both in extent and volume in the Barents Sea region. We have used the same climate forcings as Clason and others (2014), which along with older work of Siegert and Dowdeswell (2004) and Forsström and Greve (2004) confirmed the need for strong west-east gradients in both temperature and precipitation patterns.



**Fig. 5.** Map of water layer thickness at 23.5 ka calculated with a 1 km resolution bathymetric grid. Sinks in the hydraulic potential (potential subglacial lakes) are marked with red ( $S_w = 6$ ).



**Fig. 6.** Map showing all predicted lake locations during the period 40–10 ka, color-coded based on perceived probability of existence. A deep, temporally persistent lake is deemed as having a higher probability of having existed than a shallow, shortlived one. Calculated with  $S_w = 6$ .

#### 4.1. Hydrology

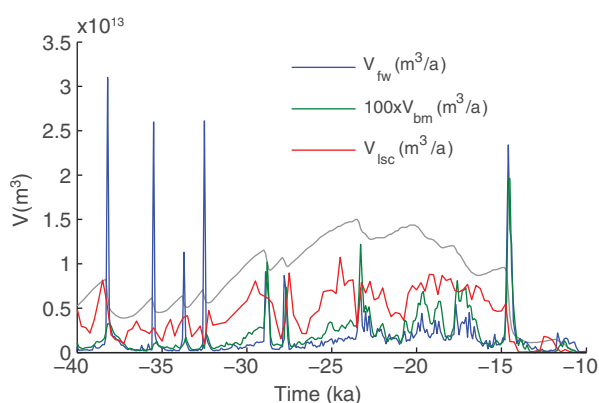
The meltwater-enhanced sliding has a strong effect on the evolution of the ice sheets. Sliding velocities are coupled to the evolution of the thin water film and increase with increasing film thickness. This leads to considerably lower ice thickness and volume building up over time. During the early stages of inception little to no differences are seen in either volume or extent as the ice sheet is mostly cold-based. As soon as a part of the margin reaches pressure melting point and sliding picks up, it draws down ice from the surrounding area, deflecting flow directions towards the lowered surface. The total ice-sheet extent is not greatly affected by HC sliding. Most notable are the differences during or following a warm period and a sharp decrease in volume where the lower thickness of the HC ice sheet means that it is more vulnerable to the higher temperatures at lower altitudes and thus experiences more surface melt and a faster decline. During ice-sheet growth and at peaks in volume the areal extent is generally slightly larger.

The effect of HC sliding on the basal temperatures, and most notably the percentage of the bed that is actually at pressure melting is greater. As can be seen from Figure 4, a much larger part of the bed is at pressure melting for simulations without HC ice dynamics. When the movement of ice

changes from flow by internal deformation to flow by rapid basal sliding, this affects the heat balance of the ice. When basal sliding ensues, heat generated by internal deformation within the ice column decreases but gets somewhat compensated for by frictional heating between the sliding ice and the underlying substrate. This however does not explain why models disregarding subglacial hydrology and its effect on sliding would overestimate temperate areas of the ice sheet. The explanation lies in the fact that for the HC sliding scenario, faster sliding leads to increased advection of cold ice from above in the transition zone, in addition to less deformational energy being available due to the lower ice thickness. Models neglecting subglacial hydrology are thus likely to overestimate temperate areas of the base as well as total ice volume compared with models that include subglacial hydrology and any associated enhancement in sliding. In simple models, such as the SIA, all stresses except vertical shearing are neglected whereas in reality, in ice streaming areas, deformation of ice is mostly due to longitudinal and lateral stresses and the internal deformational energy therefore incorrectly estimated. The SIA is technically invalid in such areas and along ice-sheet margins and ice divides in general (Baral and others, 2001). As the ratio between movement by sliding versus movement by internal deformation increases, the less accurate the SIA becomes (Gudmundsson, 2003). Including HC sliding in such models, although physically still lacking, is nevertheless worthwhile as it entails a better representation of reality and delineation of ice-streaming areas.

#### 4.2. Subglacial lakes

Many subglacial lakes are predicted to have existed during the last glacial cycle (Fig. 6) and several of them seem to have persisted over thousands of years and reached considerable depths. Not many lakes seem to form in the Barents Sea itself, an area of active palaeo-hydrology research, as the bathymetry there is generally quite flat and smooth. The most likely locations for formation of subglacial lakes in the BS seem to be around Spitsbergenbanken and Central Barents Sea (Fig. 1). Many lakes forming there would likely have been ‘active’ lakes with low water depths, short residence times and fast circulation of water much like lakes in similar settings in West Antarctica (Gray and others, 2005;



**Fig. 7.** Total freshwater production ( $V_{fw}$ ), basal melt volume ( $100 \times V_{bm}$ ) and lake storage capacity ( $V_{lsc}$ ) in  $m^3 a^{-1}$  from 40 to 10 ka ( $S_w = 6$ ). Ice volume is shown in gray in the background for comparison (not to scale).



Fricker and others, 2007). Drainage could be frequent and possibly complete on decadal timescales or slower, in which case the lake roof would come in and out of contact with the underlying sediments, thus complicating the possibility of identifying them today from geological remains. These predictions however, should be taken with precaution as several of the locations could be related to geomorphological features on the seafloor, features related to the deglaciation of the area, which would not have been present in its modern-day form during the time when a subglacial lake is predicted to have formed there.

Subglacial lakes represent areas of the ice-sheet base, fixed at the pressure melting point and incapable of exerting any shear stress on the overlying ice. The ice therefore slides freely above it, being held back only by longitudinal and lateral stresses. As all stress components are generally important around subglacial lakes, the SIA approximation is unable to account for them in a satisfactory way. Ice generally moves more like an ice shelf over large lakes, with uniform velocity. Deformational and frictional heating thus largely disappear in the ice above them (Gudlaugsson and others, 2016). As the ice speeds up it gets drawn down by vertical flow at the edges and the ice surface tends to level above it. This effect that subglacial lakes have on the ice surface also affects the hydrological potential and it has been hypothesized that this surface levelling has a stabilizing effect on their presence through deglaciation cycles or changes in ice configuration (Livingstone and others, 2012). They are thus likely to persist once formed, and lakes can be found in places, after reorganization of the ice-sheet geometry, where no corresponding sink in the hydrological potential, based on coarse geometry data alone, can be estimated.

### 4.3. Water storage

Subglacial lakes accumulate and store considerable amounts of meltwater and some estimates put the amount of stored subglacial water in Antarctica at  $\sim 12\,000\text{--}24\,000\text{ km}^3$ , equivalent to  $\sim 0.5\text{--}1\text{ m}$  thick water layer if spread out evenly underneath the entire Antarctic ice sheet (Pattyn, 2008). Typical basal melt rates are on the order of a few millimetres per year and the time it takes for the ice sheet to produce the amount of stored water is thus on the order of a few hundred to a thousand years. During the last 100 ka of its existence, the Eurasian IS went through several phases of deglaciation followed by repeated regrowth until its final demise  $\sim 10\text{ ka}$  ago. Deglaciation typically occurs rapidly in comparison with growth and as we see in its final stages, the ice sheet almost completely disappeared over a period of roughly a thousand years from 13 to 12 ka (Fig. 2). Such drastic changes in ice-sheet geometry and state have profound influences on the subglacial hydrological system. Not only do basal melt rates peak during deglaciation phases, but there are also profound changes in the storage of subglacial water due to the reconfiguration of the ice-sheet geometry and isostatic uplift. The amount of water draining from subglacial lakes can therefore drastically increase the output of subglacial water reaching the margin during deglaciation. The effect that this will have on ice-sheet dynamics in general will depend on how the water is transported downstream, either in a channelized system or via a distributed system. Its effects would range from little to a potentially significant increase in average ice velocities as witnessed at Byrd Glacier in East Antarctica a decade

ago (Stearns and others, 2008) with faster deglaciation pursuing.

## 5. CONCLUSIONS

Water enhanced sliding leads to both a drop in ice volume and thickness and due to increased advection of cold ice from above and less available deformational energy, the fraction of the bed at pressure melting is reduced. Several subglacial lakes are predicted to have existed underneath the FSIS and the BSIS, some of which coincide with large surface lakes in Scandinavia at present. A considerable amount of water will have been stored in these lakes during glacial times and flushed out during deglaciation phases, potentially multiplying the amount of available subglacial water in motion. A simple thin-film water model is unable to capture the true nature of such an increase, as channel formation is excluded and all added water leads to faster sliding. The question remains, what effect such dynamic water storage in both lakes and sediment would have on ice dynamics in general and future modelling efforts will have to focus on not only more realistic models of ice and water flow but also on including dynamic storage of subglacial water.

## ACKNOWLEDGEMENTS

Funding for this work came from the Research School in Arctic Marine Geology and Geophysics (AMGG) at the University of Tromsø and from the Research Council of Norway (RCN), Statoil, Det Norske ASA and BG group Norway (grant 200672) to the PetroMaks project 'Glaciations in the Barents Sea area (GlaciBar)'. This is also a contribution to the Centre of Excellence: Arctic Gas Hydrate, Environment and Climate (CAGE) funded by RCN (grant 223259). We thank two anonymous reviewers and the scientific editors for reviews and comments that helped improve this paper.

## REFERENCES

- Andersen KK and 9 others (2006) The Greenland ice core chronology 2005, 15–42 ka. Part 1: constructing the time scale. *Quat. Sci. Rev.*, **25**(23), 3246–3257
- Anderson JB, Shipp SS, Lowe AL, Wellner JS and Mosola AB (2002) The Antarctic Ice Sheet during the Last Glacial Maximum and its subsequent retreat history: a review. *Quat. Sci. Rev.*, **21**(1), 49–70
- Andreassen K and Winsborrow M (2009) Signature of ice streaming in Bjornoyrenna, Polar North Atlantic, through the Pleistocene and implications for ice-stream dynamics. *Ann. Glaciol.*, **50**(52), 17–26
- Andrews LC and 7 others (2014) Direct observations of evolving subglacial drainage beneath the Greenland Ice Sheet. *Nature*, **514**(7520), 80–83
- Bamber JL, Vaughan DG and Joughin I (2000) Widespread complex flow in the interior of the Antarctic ice sheet. *Science*, **287**(5456), 1248–1250
- Baral DR, Hutter K and Greve R (2001) Asymptotic theories of large-scale motion, temperature, and moisture distribution in land-based polythermal ice sheets: a critical review and new developments. *Appl. Mech. Rev.*, **54**(3), 215–256
- Barker S and 7 others (2011) 800,000 years of abrupt climate variability. *Science*, **334**(6054), 347–351
- Bjarnadóttir LR, Winsborrow M and Andreassen K (2014) Deglaciation of the central Barents Sea. *Quat. Sci. Rev.*, **92**, 208–226

- Budd W and Warner R (1996) A computer scheme for rapid calculations of balance-flux distributions. In *International Symposium on Ice Sheet Modelling*, vol. **23**, 21–27
- Clason CC, Applegate P and Holmlund P (2014) Modelling Late Weichselian evolution of the Eurasian ice sheets forced by surface meltwater-enhanced basal sliding. *J. Glaciol.*, **60**(219), 29–40
- Dee D and 9 others (2011) The ERA-Interim reanalysis: configuration and performance of the data assimilation system. *Quart. J. R. Meteorol. Soc.*, **137**(656), 553–597
- Duval P (1977) The role of the water content on the creep rate of polycrystalline ice. *IAHS Publ.*, **118**, 29–33
- Duval P and Lliboutry L (1985) Superplasticity owing to grain growth in polar ices. *J. Glaciol.*, **31**(107), 60–62
- Evans J, Dowdeswell JA, Ó Cofaigh C, Benham TJ and Anderson JB (2006) Extent and dynamics of the West Antarctic Ice Sheet on the outer continental shelf of Pine Island Bay during the last glaciation. *Marine Geol.*, **230**(1), 53–72
- Forsström PL and Greve R (2004) Simulation of the Eurasian ice sheet dynamics during the last glaciation. *Global Planet. Change*, **42**(1), 59–81
- Fricker H, Scambos T, Bindschadler R and Padman L (2007) An active subglacial water system in West Antarctica mapped from space. *Science*, **315**(5818), 1544–1548
- Glen J (1955) The creep of polycrystalline ice. *Proc. R. Soc. London Ser. A Math. Phys. Sci.*, **228**(1175), 519–538
- Gray L and 5 others (2005) Evidence for subglacial water transport in the West Antarctic Ice Sheet through three-dimensional satellite radar interferometry. *Geophys. Res. Lett.*, **32**(3), 103501 (doi: 10.1029/2004GL021387)
- Greve R (1997) Application of a polythermal three-dimensional ice sheet model to the Greenland ice sheet: response to steady-state and transient climate scenarios. *J. Clim.*, **10**(5), 901–918
- Greve R and Blatter H (2009) *Dynamics of ice sheets and glaciers*. Springer-Verlag, Berlin, Heidelberg
- Gudlaugsson E, Humbert A, Kleiner T, Kohler J and Andreassen K (2016) The influence of a model subglacial lake on ice dynamics and internal layering. *Cryosphere*, **10**(2), 751–760
- Gudmundsson GH (2003) Transmission of basal variability to a glacier surface. *J. Geophys. Res.: Solid Earth*, **108**(B5)
- Iken A (1981) The effect of the subglacial water pressure on the sliding velocity of a glacier in an idealized numerical model. *J. Glaciol.*, **27**(97), 407–421
- Johnson J and Fastook JL (2002) Northern Hemisphere glaciation and its sensitivity to basal melt water. *Quat. Int.*, **95**, 65–74
- Kageyama M and 9 others (2013) Mid-holocene and last glacial maximum climate simulations with the IPSL model – part I: comparing IPSL\_CM5A to IPSL\_CM4. *Clim. Dynam.*, **40**(9–10), 2447–2468
- Kleiner T and Humbert A (2014) Numerical simulations of major ice streams in western Dronning Maud Land, Antarctica, under wet and dry basal conditions. *J. Glaciol.*, **60**(220), 215–232
- Le Brocq A, Payne A and Siegert M (2006) West Antarctic balance calculations: impact of flux-routing algorithm, smoothing algorithm and topography. *Comp. Geosci.*, **32**(10), 1780–1795
- Le Brocq A, Payne A, Siegert M and Alley R (2009) A subglacial water-flow model for West Antarctica. *J. Glaciol.*, **55**(193), 879–888
- Le Meur E and Huybrechts P (1996) A comparison of different ways of dealing with isostasy: examples from modelling the Antarctic ice sheet during the last glacial cycle. *Ann. Glaciol.*, **23**(1), 309–317
- Livingstone SJ and 7 others (2012) Theoretical framework and diagnostic criteria for the identification of palaeo-subglacial lakes. *Quat. Sci. Rev.*, **53**, 88–110
- Livingstone SJ and 5 others (2015) An ice-sheet scale comparison of eskers with modelled subglacial drainage routes. *Geomorphology*, **246**, 104–112
- Lliboutry L (1968) General theory of subglacial cavitation and sliding of temperate glaciers. *J. Glaciol.*, **7**, 21–58
- Nye J and Frank F (1973) Water at the bed of a glacier. In *Symposium at Cambridge 1969 – Hydrology of Glaciers*, vol. **95**. Cambridge, England, IAHS Publishing, 189–194
- Paterson W and Budd W (1982) Flow parameters for ice sheet modeling. *Cold Reg. Sci. Technol.*, **6**(2), 175–177
- Pattyn F (2008) Investigating the stability of subglacial lakes with a full Stokes ice-sheet model. *J. Glaciol.*, **54**(185), 353–361
- Payne A and Baldwin D (1999) Thermomechanical modelling of the Scandinavian ice sheet: implications for ice-stream formation. *Ann. Glaciol.*, **28**(1), 83–89
- Röthlisberger H (1972) Water pressure in intra- and subglacial channels. *J. Glaciol.*, **11**, 177–203
- Saha S and 9 others (2010) The NCEP climate forecast system reanalysis. *Bull. Am. Meteorol. Soc.*, **91**(8), 1015–1057
- Schoof C (2010) Coulomb friction and other sliding laws in a higher-order glacier flow model. *Math. Models Methods Appl. Sci.*, **20**(1), 157–189
- Shoemaker E (1986) Subglacial hydrology for an ice sheet resting on a deformable aquifer. *J. Glaciol.*, **32**(110), 20–30
- Shreve R (1972) Movement of water in glaciers. *J. Glaciol.*, **11**, 205–214
- Siegert M and Dowdeswell JA (2004) Numerical reconstructions of the Eurasian ice sheet and climate during the Late Weichselian. *Quat. Sci. Rev.*, **23**(11), 1273–1283
- Siegert M, Dowdeswell J, Gorman M and McIntyre N (1996) An inventory of Antarctic sub-glacial lakes. *Antarct. Sci.*, **8**(3), 281–286
- Stearns LA, Smith BE and Hamilton GS (2008) Increased flow speed on a large East Antarctic outlet glacier caused by subglacial floods. *Nat. Geosci.*, **1**(12), 827–831
- Svendsen JJ and 9 others (2004a) Late Quaternary ice sheet history of northern Eurasia. *Quat. Sci. Rev.*, **23**(11), 1229–1271
- Svendsen JJ, Gataullin V, Mangerud J and Polyak L (2004b) The glacial history of the Barents and Kara Sea region. *Dev. Quat. Sci.*, **2**, 369–378
- Tulaczyk S, Kamb WB and Engelhardt HF (2000) Basal mechanics of Ice Stream B, West Antarctica: 1. Till mechanics. *J. Geophys. Res. B*, **105**(B1), 463–481
- Uppala SM and 9 others (2005) The ERA-40 re-analysis. *Quart. J. R. Meteorol. Soc.*, **131**(612), 2961–3012
- van de Wal RSW and 6 others (2008) Large and rapid melt-induced velocity changes in the ablation zone of the Greenland Ice Sheet. *Science*, **321**(5885), 111–113, ISSN 0036-8075 (doi: 10.1126/science.1158540)
- Weatherall P and 9 others (2015) A new digital bathymetric model of the world's oceans. *Earth Space Sci.*, **2**, 331–345, ISSN 2333-5084 (doi: 10.1002/2015EA000107), 2015EA000107
- Weertman J (1957) On the sliding of glaciers. *J. Glaciol.*, **3**(21), 33–38
- Weertman J (1966) Effect of a basal water layer on the dimensions of ice sheets. *J. Glaciol.*, **6**(44), 3–15
- Weertman J (1972) General theory of water flow at the base of a glacier or ice sheet. *Rev. Geophys.*, **10**(1), 287–333, ISSN 1944-9208 (doi: 10.1029/RG010i001p00287)
- Winsborrow M, Andreassen K, Corner GD and Laberg JS (2010) Deglaciation of a marine-based ice sheet: late Weichselian palaeo-ice dynamics and retreat in the southern Barents Sea reconstructed from onshore and offshore glacial geomorphology. *Quat. Sci. Rev.*, **29**(3), 424–442
- Wolff EW, Chappellaz J, Blunier T, Rasmussen SO and Svensson A (2010) Millennial-scale variability during the last glacial: the ice core record. *Quat. Sci. Rev.*, **29**(21), 2828–2838

MS received 29 June 2016 and accepted in revised form 15 March 2017