

2015

The inevitable drift to triple therapy in COPD: an analysis of prescribing pathways in the UK

Price, D

<http://hdl.handle.net/10026.1/4212>

10.2147/copd.s91694

International Journal of Chronic Obstructive Pulmonary Disease

Informa UK Limited

All content in PEARL is protected by copyright law. Author manuscripts are made available in accordance with publisher policies. Please cite only the published version using the details provided on the item record or document. In the absence of an open licence (e.g. Creative Commons), permissions for further reuse of content should be sought from the publisher or author.

The inevitable drift to triple therapy in COPD: an analysis of prescribing pathways in the UK

Guy Brusselle¹⁻³

David Price^{4,5}

Kevin Gruffydd-Jones⁶

Marc Miravittles⁷

Dorothy L Keininger⁸

Rebecca Stewart⁵

Michael Baldwin⁹

Rupert C Jones¹⁰

¹Department of Respiratory Medicine, University Hospital Ghent, Ghent, Belgium; ²Department of Epidemiology,

³Department of Respiratory Medicine, Erasmus Medical Center, Rotterdam, Netherlands; ⁴Centre of Academic Primary Care, University of Aberdeen, Aberdeen, UK; ⁵Research in Real Life (RiRL), Singapore; ⁶Box Surgery, Wiltshire, UK; ⁷Pneumology

Department, Hospital Universitari Vall d'Hebron, CIBER de Enfermedades Respiratorias (CIBERES), Barcelona, Spain; ⁸Novartis Pharma AG, Basel, Switzerland; ⁹Novartis Pharmaceuticals Limited, Horsham, UK; ¹⁰Plymouth University Peninsula Schools of Medicine and Dentistry, Plymouth, UK

Background: Real-world prescription pathways leading to triple therapy (TT) (inhaled corticosteroid [ICS] plus long-acting β_2 -agonist bronchodilator [LABA] plus long-acting muscarinic antagonist) differ from Global initiative for chronic Obstructive Lung Disease [GOLD] and National Institute for Health and Care Excellence treatment recommendations. This study sets out to identify COPD patients without asthma receiving TT, and determine the pathways taken from diagnosis to the first prescription of TT.

Methods: This was a historical analysis of COPD patients without asthma from the Optimum Patient Care Research Database (387 primary-care practices across the UK) from 2002 to 2010. Patient disease severity was classified using GOLD 2013 criteria. Data were analyzed to determine prescribing of TT before, at, and after COPD diagnosis; the average time taken to receive TT; and the impact of lung function grade, modified Medical Research Council dyspnea score, and exacerbation history on the pathway to TT.

Results: During the study period, 32% of patients received TT. Of these, 19%, 28%, 37%, and 46% of patients classified as GOLD A, B, C, and D, respectively, progressed to TT after diagnosis ($P < 0.001$). Of all patients prescribed TT, 25% were prescribed TT within 1 year of diagnosis, irrespective of GOLD classification ($P = 0.065$). The most common prescription pathway to TT was LABA plus ICS. It was observed that exacerbation history did influence the pathway of LABA plus ICS to TT.

Conclusion: Real life UK prescription data demonstrates the inappropriate prescribing of TT and confirms that starting patients on ICS plus LABA results in the inevitable drift to overuse of TT. This study highlights the need for dissemination and implementation of COPD guidelines to physicians, ensuring that patients receive the recommended therapy.

Keywords: chronic obstructive pulmonary disease, GOLD guidelines, observational study, prescribing patterns, primary care

Introduction

Chronic obstructive pulmonary disease (COPD) contributes significantly to health care costs worldwide.¹ While there is no cure for COPD, it is preventable and treatable by reducing and relieving the impact of symptoms, such as chronic cough, chronic sputum production, and dyspnea while also reducing the risk of exacerbations.² The current Global initiative for chronic Obstructive Lung Disease (GOLD) strategy classifies COPD patients, according to an assessment of lung function (spirometry), current symptoms, and future exacerbation risks, into one of four groups: GOLD A, B, C, and D.²

The GOLD 2015 strategy document also proposes suitable first and secondary choice pharmacologic therapies for each of these groups.² Specifically, the prescribing of triple therapy (TT), designated as long-acting β_2 -agonist bronchodilator (LABA) with a long-acting muscarinic antagonist (LAMA) and an inhaled corticosteroid

Correspondence: David Price
Research in Real Life, 2 Changi Business
Park Avenue 1, Level 2, Singapore 486015
Email david@respiratoryresearch.org

(ICS), is recommended exclusively for COPD patients in group D (forced expiratory volume in 1 second [FEV_1] < 50% predicted and/or a history of two or more exacerbations per year; or one or more hospitalizations for a COPD exacerbation according to the GOLD 2013 update³ and a modified Medical Research Council [mMRC] grade ≥ 2 ; or a COPD assessment test score ≥ 10 ; or a clinical COPD questionnaire > 1). Similarly the National Institute for Health and Clinical Excellence (NICE) in the UK has created an algorithm for prescribing inhaled pharmacotherapies based on a multi-dimensional assessment of COPD patients.⁴ Despite these guidelines, real-world studies indicate that pharmacological treatments often differ from the recommendations.^{5–8} To date, studies have indicated that there is insufficient evidence to determine whether TT is clinically superior to dual therapy options^{9,10} and that there is a requirement for longer-term studies to assess the value of this therapy.¹¹ NICE guidelines state that the use of TT is only cost-effective in patients with a predicted FEV_1 < 50% and who are frequent exacerbators (two or more exacerbations in the past 12 months),⁴ thereby the overuse of TT is probably wasteful of limited health care resources when probably only LAMA, LABA, or dual bronchodilator (LABA plus LAMA) is required.

The use of TT exposes patients to the long-term use of ICS, which is already reported to be widely used in patients with GOLD A and B where it is not clinically indicated.^{5,6,12–17} Early studies have shown that patients with more severe COPD and who have a history of frequent exacerbations were most likely to benefit from ICS treatment.^{18–20} However, recent studies have shown the overuse of ICS in COPD patients with mild to moderate disease²¹ which is contrary to current GOLD recommendations and to the approved COPD indications for ICS in combination with LABAs. NICE guidelines also indicate that ICS, in combination with a LABA, is not cost-effective in COPD patients with a predicted FEV_1 > 50%.⁴ The inappropriate use of ICS results in these patients being exposed early in the disease to the known side effects associated with ICS,^{22–25} in particular pneumonia.^{26–28} Furthermore, ICS use does not necessarily result in superior efficacy when compared to other treatment options^{10,21,29–31} or decrease hospitalizations in COPD patients.³²

In order to suggest solutions for how alignment with recommendations could be improved, it is necessary to understand what treatment decisions are being made by general practitioners and how they evolve over time and lead to TT being prescribed. This historical, observational study sets out to understand prescribing practices by using COPD patient data from a large UK patient dataset, Optimum Patient

Care Research Database (OPCRD). The aims of this study were to explore the prescribing pathways to TT; specifically, what patients were prescribed pre-diagnosis and at the time of diagnosis and what they changed to over time. Furthermore, the aim was to identify the most common treatment pathways to TT and evaluate what influenced these pathways to TT.

Methods

Data source

The study utilized data from the OPCRD which is a quality-controlled longitudinal primary-care database mainly containing respiratory data. At the time of data extraction for this study, the OPCRD comprised anonymous patient data from 387 primary-care practices across the UK serving a population of over 3 million patients, of which data from 318 primary-care practices were utilized for this study.³³

The first type of data consisted of routine clinical data where Optimum Patient Care software interfaced with primary-care practice management systems to extract information which included patient demographics, standard COPD comorbidities, exacerbation history, mMRC dyspnea score, and current therapy.

The second type of data collected was on patient-reported outcomes in a subset of patients. Eligible patients with respiratory disease (those with diagnoses and/or in receipt of prescriptions for COPD and approved for participation by their general practitioner) completed validated disease-assessment questionnaires, which contained questions to calculate mMRC scores.

All data in the OPCRD is anonymized. This database has been approved by Trent Multi Centre Research Ethics Committee for clinical research use, and the OPCRD's independent Anonymized Data Ethics Protocols and Transparency committee verified and approved the planned analysis.³³ This study is registered at www.clinicaltrials.gov with identifier number NCT01786720.

Study design and patients

A historical cohort study design was utilized in this study, which contained data from 1997–2010. The analyses utilized data from 2002–2010. Data prior to 2002 was excluded to ensure the full analysis of treatment pathways including a LAMA treatment, tiotropium, which was approved in the UK in 2002.³⁴

The analysis included patients ≥ 40 years of age at initial date of COPD diagnosis (quality outcome framework diagnostic code³⁵), with spirometry data supportive of a COPD diagnosis (FEV_1 /forced vital capacity < 0.7) in the 5 years prior to and inclusive of the date of diagnosis, and

having data 1 year prior to and a minimum of 2 years post-initial date of diagnosis.

The pathway to TT was examined over time from patients with an initial date of COPD diagnosis from the years 2002–2010. GOLD 2013 group classification was utilized in this study and was based on COPD symptoms (mMRC), spirometric classification, and number of exacerbations.³ Other exclusion criteria consisted of: patients whose initial date of COPD diagnosis was before 2002 (due to UK approval of tiotropium in 2002³⁴); patients who had an asthma diagnosis; and patients with unknown GOLD classification (Figure 1).

COPD initial therapy was defined as pharmacological therapy prescribed during 1 year prior to and at the initial date of COPD diagnosis (baseline period). Therapies

were grouped into four categories: no TT prescription, TT prescribed prior to initial date of COPD diagnosis, TT prescribed at initial date of COPD diagnosis, and TT prescribed after initial date of COPD diagnosis.

Analysis of data

Summaries were produced for all characteristics at the time of diagnosis. Data were analyzed for the number of patients who were and were not prescribed TT prior to, at, and after COPD diagnosis. For patients who were prescribed TT after COPD diagnosis, the time taken for these patients to receive TT was categorized into years: up to 1 year, 1–2 years, 2–3 years, 3–4 years, 4–5 years, 5–6 years, 6–7 years, 7–8 years, 8–9 years, 9–10 years, and >10 years.

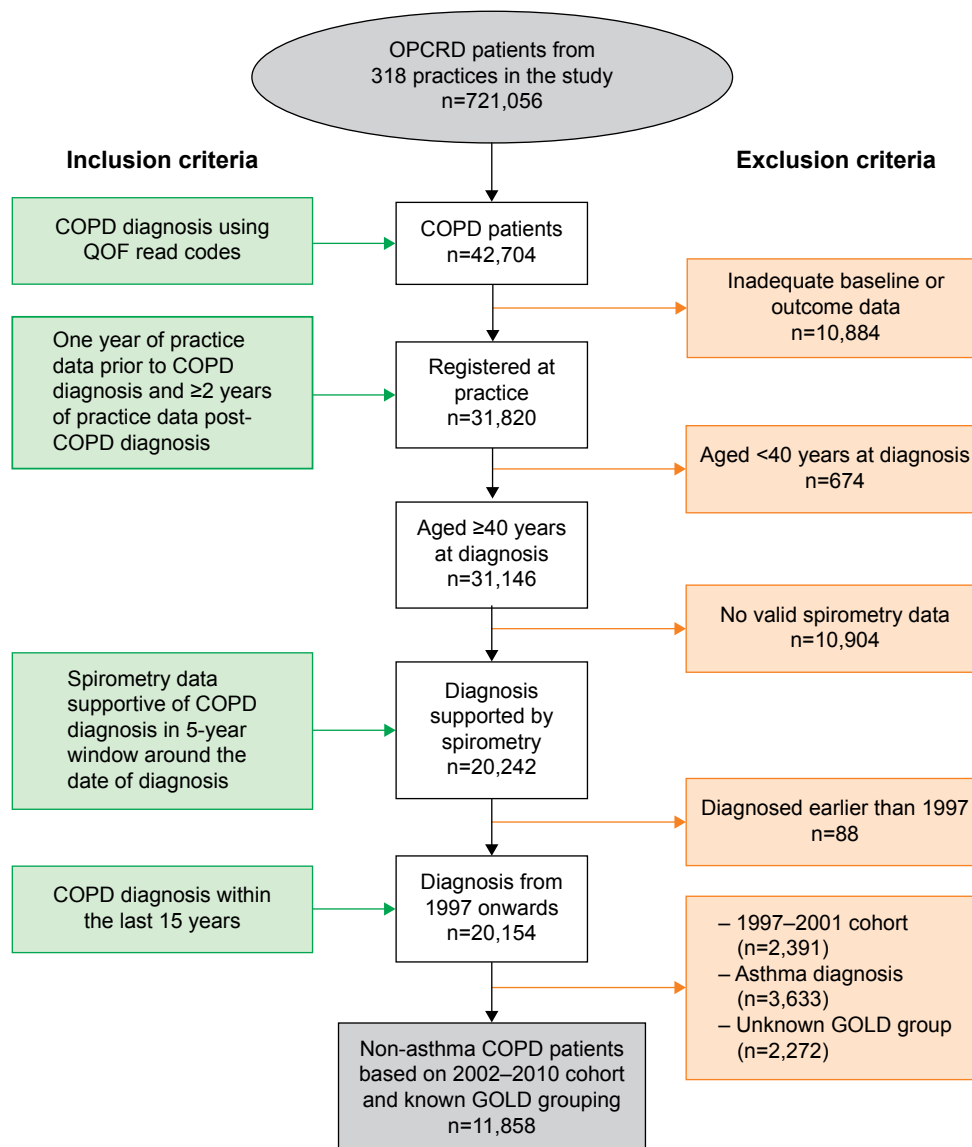


Figure 1 Patient selection.

Abbreviations: GOLD, Global initiative for chronic Obstructive Lung Disease; OPCR, Optimum Patient Care Research Database; QOF, quality and outcomes framework.

Common treatment pathways were identified based on a number of patients $\geq 1\%$ of the total study population following a particular pathway. Pathways followed by $< 1\%$ of patients were grouped together and presented as other non-frequent pathways. Treatment pathways were mapped from the initial therapy (defined as the sum of therapies prescribed during 1 year prior to and at the initial date of COPD diagnosis) to the first prescription of TT.

Lung function grade, mMRC, and exacerbation history were calculated during 1 year prior to and at the initial date of COPD diagnosis. The impact of lung function grade, mMRC score (dyspnea), and exacerbation history at baseline on treatment pathways and treatment pathways to TT was also described.

Statistical differences between the patients split into cohorts was calculated for those who were: 1) not prescribed TT; 2) prescribed TT prior to the initial date of COPD diagnosis; 3) prescribed TT on the date of COPD diagnosis; and 4) prescribed TT after the date of COPD diagnosis. A chi-square test was used to compare whether all groups analyzed were statistically different (the *P*-value applies to all groups being compared).

Results

Patient selection

Of the 42,704 patients diagnosed with COPD between 2002 and 2010, 11,858 subjects met the eligibility criteria (Figure 1). Subsequent analyses were carried out on this cohort of patients.

Patient characteristics and demographics

A summary of all eligible patient characteristics at time of diagnosis is provided in Table 1. The median age of patients was 66 years with an interquartile range from 60 to 74 years. The proportion of males was 54%. Most patients were ex-smokers (50%) or current smokers (47%). In the year preceding the study, 67% of patients did not experience an exacerbation, 19% of patients experienced one exacerbation, and 14% experienced two or more exacerbations. COPD diagnosis, according to GOLD 2013 lung function grade,³ classified 70% of patients as having mild-to-moderate airflow limitation ($FEV_1 \geq 50\%$), while 25% and 5% of patients had severe and very severe airflow limitation, respectively. At the closest date to initial date of COPD diagnosis, eligible patients were classified according to GOLD 2013 as 41% ($n=4,822$) as GOLD A, 25% ($n=2,933$) as B, 17% ($n=2,055$) as C, and 17% as D ($n=1,988$) (Table 1).

Table 1 Summary of patient characteristics at time of diagnosis

	Total population N=11,858 (100%)
Age, years	
Median (IQR)	66 (60–74)
Sex, n (%)	
Male	6,383 (53.8)
BMI	
Median (IQR)	26.5 (23–30)
Smoking status, n (%)	
Current smoker	5,539 (46.7)
Ex-smoker	5,893 (49.7)
Nonsmoker	424 (3.6)
Number of severe exacerbations during the year prior to and including the initial date of COPD diagnosis, n (%)	
0	7,913 (66.7)
1	2,300 (19.4)
2	853 (7.2)
≥ 3	792 (6.7)
Lung function, GOLD grade, n (%)	
Mild ($FEV_1 \geq 80\%$ predicted)	1,674 (14.1)
Moderate ($50\% \leq FEV_1 < 80\%$ predicted)	6,666 (56.2)
Severe ($30\% \leq FEV_1 < 50\%$ predicted)	2,956 (24.9)
Very severe ($FEV_1 < 30\%$ predicted)	562 (4.7)
mMRC score, n (%)	
0–1	6,937 (58.5)
2+	4,921 (41.5)
GOLD 2013 classification,* n (%)	
GOLD A (low risk, less symptoms)	4,882 (41)
GOLD B (low risk, more symptoms)	2,933 (25)
GOLD C (high risk, less symptoms)	2,055 (17)
GOLD D (high risk, more symptoms)	1,988 (17)

Note: *GOLD group recorded closest to initial diagnosis, based on GOLD 2013 (A, B, C, and D).

Abbreviations: BMI, body mass index; COPD, chronic obstructive pulmonary disease; FEV_1 , forced expiratory volume in 1 second; GOLD, Global initiative for chronic Obstructive Lung Disease; IQR, interquartile range; mMRC, modified Medical Research Council.

TT status and progression to TT in COPD patients

Regardless of GOLD category, 32% of patients received TT during the study period (Table 2). A small proportion of GOLD A, B, and C patients received TT prior to their initial recorded COPD diagnosis (1%, 1%, and 2%, respectively) (Table 2). A similar percentage of GOLD A, B, and C patients were prescribed TT at initial diagnosis or within 1 year (1%, 1%, and 2%, respectively) (Table 2). However, after initial COPD diagnosis, many GOLD A, B, and C patients (19%, 28%, and 37%, respectively; $P < 0.001$) were prescribed TT (Table 2).

Analysis of the time to TT demonstrated that 25% of patients who progressed to TT did so within 1 year after diagnosis (GOLD A: 26%; GOLD B: 22%; GOLD C: 24%; and GOLD D: 28%; $P=0.065$) (Figure 2). Within 2 years of

Table 2 Triple therapy status by GOLD group (2002–2010)

	GOLD group				Total n (%)
	A	B	C	D	
No triple therapy prescription	3,864 (79)	2,052 (70)	1,210 (59)	977 (49)	8,103 (68)
Triple therapy prescribed prior to initial diagnosis	47 (1)	41 (1)	49 (2)	42 (2)	179 (2)
Triple therapy prescribed at initial diagnosis	46 (1)	30 (1)	39 (2)	47 (2)	162 (1)
Triple therapy prescribed after initial diagnosis	925 (19)	810 (28)	757 (37)	922 (46)	3,414 (29)
Total n (%)	4,882 (100)	2,933 (100)	2,055 (100)	1,988 (100)	11,858 (100)

Note: $P < 0.001$ (chi-square test).

Abbreviation: GOLD, Global initiative for chronic Obstructive Lung Disease.

initial diagnosis, >40% of patients progressed to TT (GOLD A: 46%; GOLD B: 39%; GOLD C: 42%; and GOLD D: 47%; Figure 2), with >50% of patients progressing to TT within 3 years after diagnosis (GOLD A: 62%; GOLD B: 57%; GOLD C: 60%; and GOLD D: 64%; $P=0.065$) (Figure 2). Almost 100% of patients who progressed to TT in GOLD A, B, C, and D did so within 8 years after initial diagnosis (Figure 2).

Therapy pathway to TT

A total of 86 treatment pathways were identified in the COPD population ($n=3,505$). Among these, 17 frequent treatment pathways were identified ($n=2,970$) (Figure 3). The most frequent treatment pathway was ICS plus LABA → ICS plus LABA plus LAMA ($n=869$ [25%]) (Figure 3). The second and third most frequent treatment pathways to TT were patients who were prescribed TT as their initial therapy (ICS plus LABA plus LAMA) and ICS → ICS plus LABA → ICS plus LABA plus LAMA ($n=341$ [10%] and $n=310$ [9%], respectively). Approximately 15% ($n=535$) of patients were prescribed inhaled therapy according to

treatment pathways with <1% frequency overall (other non-frequent pathways).

The impact of mMRC score (dyspnea) revealed that, in patients with a mMRC score of 4, 25% of this group followed the most common pathway to TT (ICS plus LABA → ICS plus LABA plus LAMA) (Table 3). In patients with a mMRC score of 0, 1, 2, and 3, approximately 24% took the most common treatment pathway (ICS plus LABA → ICS plus LABA plus LAMA). A similar trend was observed for the other 16 most frequent treatment pathways.

The impact of the number of exacerbations at baseline on the most common treatment pathways was also analyzed (Table 4). Of patients who experienced three or more exacerbations, 43% followed the pathway of ICS plus LABA → ICS plus LABA plus LAMA. The percentage of patients with two, one, or no history of exacerbations following this pathway was 33%, 26%, and 20%, respectively. A similar trend was observed for the remaining treatment pathways.

A similar percentage of patients in each of the GOLD 2013 lung function grades followed the most common pathway, ICS plus LABA → ICS plus LABA plus LAMA (grade 1=25%, grade 2=24%, grade 3=26%, and grade 4=23%) (Table 5). A similar trend was observed for the other 16 possible treatment pathways.

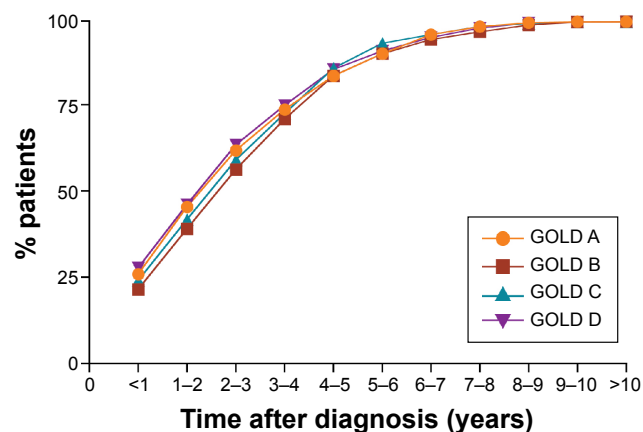


Figure 2 Cumulative proportion of patients receiving triple therapy by GOLD group (2002–2010).

Note: $P=0.065$ (chi-square test).

Abbreviation: GOLD, Global initiative for chronic Obstructive Lung Disease.

Discussion

In this study, an analysis of the pathways leading to TT indicated that one-third of COPD patients with no concomitant asthma diagnosis between 2002 and 2010 progressed to TT. Results demonstrated that TT was inappropriately used in GOLD A, B, and C patients. Approximately 25% of all patients prescribed TT received their first TT prescription 1 year after diagnosis, rising to 50% within 3 years post diagnosis, and eventually resulting in 100% 8 years postdiagnosis. The most common pathway to TT observed was ICS plus LABA pre-COPD diagnosis followed by TT postdiagnosis of COPD (ICS plus LABA → ICS plus LABA plus LAMA). The mMRC dyspnea score and impairment in lung

Most popular treatment pathways to triple therapy

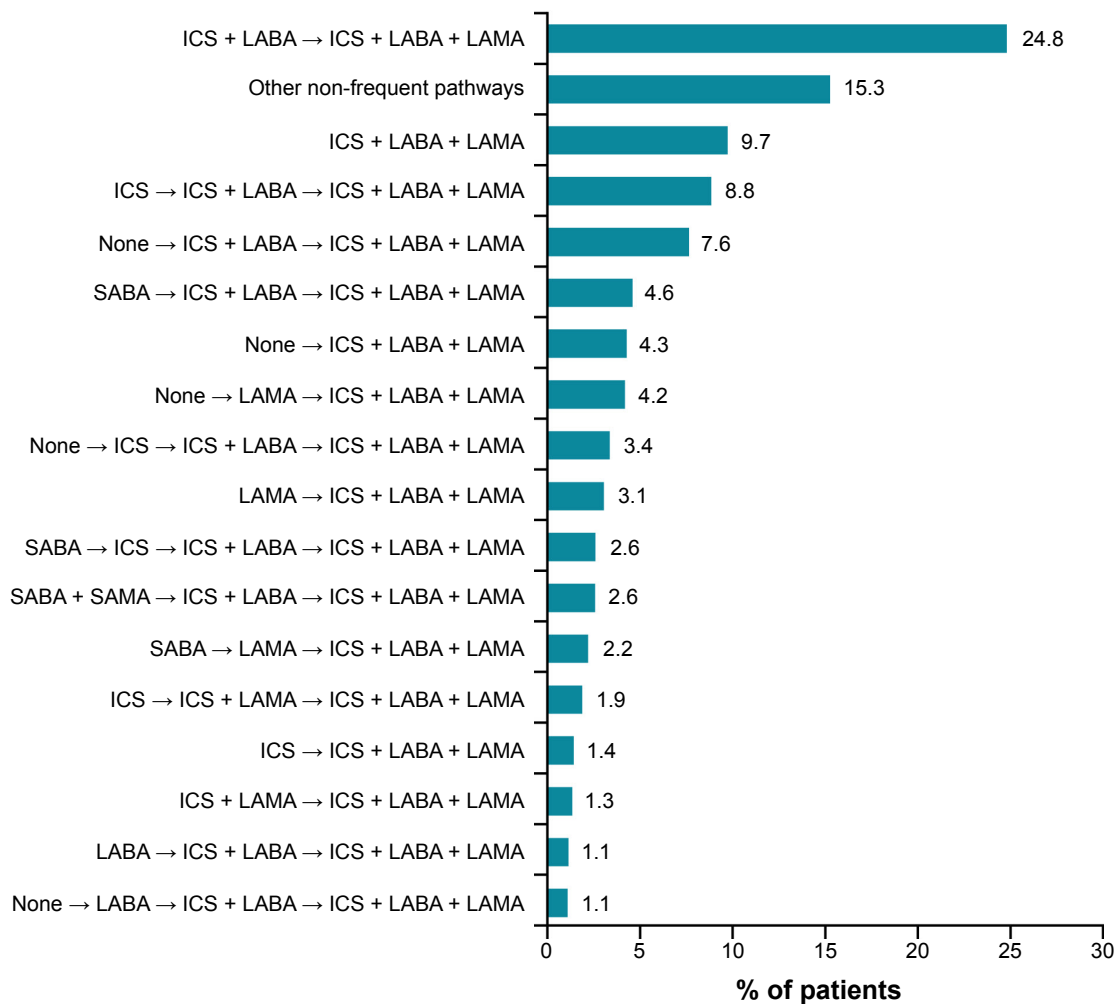


Figure 3 Distribution of different treatment pathways leading to triple therapy (ICS plus LABA plus LAMA), identified from total triple therapy population (n=3,505).

Notes: Pathways with a percent frequency of less than 1% were grouped under the category "other non-frequent pathways". The first drug listing in the treatment pathway was considered to be the patient's initial therapy, and the second drug listing was the prescription after the initial date of COPD diagnosis.

Abbreviations: ICS, inhaled corticosteroid; LABA, long-acting β_2 -agonist; LAMA, long-acting muscarinic antagonist; SABA, short-acting β_2 -agonist; SAMA, short-acting muscarinic antagonist.

function were not evaluating factors that influenced pathways leading to TT; however, the number of exacerbations was shown to influence this progression from ICS plus LABA to TT. Throughout all the common pathways to TT (>1% frequency) identified, the use dual bronchodilators (LABA plus LAMA) as a therapy option was not observed.

NICE guidelines suggest that patients with persistent breathlessness and exacerbations should progress to TT,⁴ with GOLD indicating the use of TT in GOLD D patients.² Results from this study demonstrated that approximately one-third of all COPD patients in this study were receiving TT, which falls in the range observed in similar studies that were conducted in Japan (21%),³⁶ France (33%),³⁷ and Greece (44.8%).³⁸ Of the patients prescribed TT in the study presented here, 19%, 28%, and 37% of GOLD A, B, and C

patients, respectively, were prescribed TT after their initial diagnosis of COPD. The frequency of TT being prescribed is comparable to that observed from other studies. In a French study, the percentage of GOLD A, B, C, and D patients being prescribed TT was 20%, 32%, 25%, and 48%, respectively.³⁷ A study by Miyazaki et al³⁶ also observed similar rates of TT being prescribed to GOLD B, C, and D with slightly less TT prescribed to GOLD A patients (9%). Similarly, in a Canadian study, 20% and 30% of GOLD A and GOLD B patients, respectively, were prescribed TT.³⁹ Overall, this indicates that the prescription behaviors observed in this UK study do not differ from those reported by other countries. A study by Corrado et al¹⁴ suggested that some respiratory specialists prefer to use TT even in patients who do not have severe COPD. This was evident in the present study,

Table 3 Pathways to triple therapy split by mMRC score

Treatment pathway from date of COPD diagnosis	mMRC score				
	0 n (%)	1 n (%)	2 n (%)	3 n (%)	4 n (%)
ICS + LABA → ICS + LABA + LAMA	59 (24)	347 (23)	231 (25)	182 (29)	50 (25)
ICS + LABA + LAMA	25 (10)	156 (11)	90 (10)	48 (8)	22 (11)
ICS → ICS + LABA → ICS + LABA + LAMA	20 (8)	131 (9)	79 (8)	60 (10)	20 (10)
None → ICS + LABA → ICS + LABA + LAMA	23 (9)	96 (7)	78 (8)	55 (9)	16 (8)
SABA → ICS + LABA → ICS + LABA + LAMA	9 (3.6)	78 (5)	43 (4.6)	26 (4.1)	5 (2.5)
None → ICS + LABA + LAMA	11 (4.4)	66 (4.4)	33 (3.5)	31 (4.9)	9 (4.5)
None → LAMA → ICS + LABA + LAMA	15 (6)	63 (4.2)	39 (4.2)	27 (4.3)	3 (1.5)
None → ICS → ICS + LABA → ICS + LABA + LAMA	9 (3.6)	52 (3.5)	36 (3.8)	16 (2.5)	5 (2.5)
LAMA → ICS + LABA + LAMA	7 (2.8)	58 (3.9)	25 (2.7)	13 (2.1)	4 (2.0)
SABA → ICS → ICS + LABA → ICS + LABA + LAMA	6 (2.4)	34 (2.3)	28 (3.0)	16 (2.5)	7 (3.5)
SABA + SAMA → ICS + LABA → ICS + LABA + LAMA	2 (0.8)	42 (2.8)	21 (2.2)	16 (2.5)	9 (4.5)
SABA → LAMA → ICS + LABA + LAMA	10 (4.0)	28 (1.9)	26 (2.8)	9 (1.4)	4 (2.0)
ICS → ICS + LAMA → ICS + LABA + LAMA	2 (0.8)	25 (1.7)	18 (1.9)	15 (2.4)	6 (3.0)
ICS → ICS + LABA + LAMA	7 (2.8)	28 (1.9)	8 (0.9)	4 (0.6)	3 (1.5)
ICS + LAMA → ICS + LABA + LAMA	0 (0)	27 (1.8)	14 (1.5)	5 (0.8)	1 (0.5)
LABA → ICS + LABA → ICS + LABA + LAMA	4 (1.6)	15 (1.0)	7 (0.7)	12 (1.9)	2 (1.0)
None → LABA → ICS + LABA → ICS + LABA + LAMA	1 (0.4)	16 (1.1)	10 (1.1)	7 (1.1)	4 (2.0)
Other non-frequent pathways	41 (16)	223 (15)	150 (16)	90 (14)	31 (15)
Total	251 (100)	1,485 (100)	936 (100)	632 (100)	201 (100)

Notes: Pathways with a percent frequency of less than 1% were grouped under the category "other non-frequent pathways". The first drug listing in the treatment pathway was considered to be the patient's initial therapy, and the second drug listing was the prescription after the initial date of COPD diagnosis. All percent values >5.0 were rounded up.

Abbreviations: ICS, inhaled corticosteroid; LABA, long-acting β_2 -agonist; LAMA, long-acting muscarinic antagonist; mMRC, modified Medical Research Council; SABA, short-acting β_2 -agonist; SAMA, short-acting muscarinic antagonist.

Table 4 Pathways to triple therapy split by exacerbation history

Treatment pathway from date of COPD diagnosis	Number of exacerbations at baseline			
	0 n (%)	1 n (%)	2 n (%)	3+ n (%)
ICS + LABA → ICS + LABA + LAMA	401 (20)	227 (26)	113 (33)	128 (43)
ICS + LABA + LAMA	145 (7)	94 (11)	47 (14)	55 (19)
ICS → ICS + LABA → ICS + LABA + LAMA	183 (9)	76 (9)	37 (11)	14 (4.7)
None → ICS + LABA → ICS + LABA + LAMA	196 (10)	51 (6)	13 (3.8)	8 (2.7)
SABA → ICS + LABA → ICS + LABA + LAMA	83 (4.1)	48 (6)	16 (4.7)	14 (4.7)
None → ICS + LABA + LAMA	127 (6)	18 (2.1)	4 (1.2)	1 (0.3)
None → LAMA → ICS + LABA + LAMA	105 (5)	29 (3.4)	8 (2.4)	5 (1.7)
None → ICS → ICS + LABA → ICS + LABA + LAMA	96 (4.8)	16 (1.9)	4 (1.2)	2 (0.7)
LAMA → ICS + LABA + LAMA	67 (3.3)	24 (2.8)	10 (2.9)	6 (2.0)
SABA → ICS → ICS + LABA → ICS + LABA + LAMA	51 (2.5)	32 (3.7)	8 (2.4)	0 (0)
SABA + SAMA → ICS + LABA → ICS + LABA + LAMA	48 (2.4)	28 (3.3)	7 (2.1)	7 (2.3)
SABA → LAMA → ICS + LABA + LAMA	49 (2.4)	16 (1.9)	7 (2.1)	5 (1.7)
ICS → ICS + LAMA → ICS + LABA + LAMA	33 (1.6)	22 (2.6)	6 (1.8)	5 (1.7)
ICS → ICS + LABA + LAMA	29 (1.4)	8 (0.9)	8 (2.4)	5 (1.7)
ICS + LAMA → ICS + LABA + LAMA	17 (0.8)	15 (1.7)	9 (2.7)	6 (2.0)
LABA → ICS + LABA → ICS + LABA + LAMA	21 (1.0)	12 (1.4)	3 (0.9)	4 (1.3)
None → LABA → ICS + LABA → ICS + LABA + LAMA	30 (1.5)	6 (0.7)	2 (0.6)	0 (0)
Other non-frequent pathways	328 (16)	137 (16)	37 (11)	33 (11)
Total	2,009 (100)	859 (100)	339 (100)	298 (100)

Notes: Pathways with a percent frequency of less than 1% were grouped under the category "other non-frequent pathways". The first drug listing in the treatment pathway was considered to be the patient's initial therapy, and the second drug listing was the prescription after the initial date of COPD diagnosis. All percent values >5.0 were rounded up.

Abbreviations: ICS, inhaled corticosteroid; LABA, long-acting β_2 -agonist; LAMA, long-acting muscarinic antagonist; SABA, short-acting β_2 -agonist; SAMA, short-acting muscarinic antagonist.

Table 5 Pathways to triple therapy split by lung function grade

Treatment pathway from date of COPD diagnosis	Lung function grade (GOLD group)			
	1 n (%)	2 n (%)	3 n (%)	4 n (%)
ICS + LABA → ICS + LABA + LAMA	75 (25)	401 (24)	327 (26)	66 (23)
ICS + LABA + LAMA	35 (12)	160 (10)	119 (9)	27 (9)
ICS → ICS + LABA → ICS + LABA + LAMA	22 (8)	131 (8)	128 (10)	29 (10)
None → ICS + LABA → ICS + LABA + LAMA	21 (7)	124 (8)	96 (8)	27 (9)
SABA → ICS + LABA → ICS + LABA + LAMA	12 (4.1)	86 (5)	51 (4.0)	12 (4.2)
None → ICS + LABA + LAMA	13 (4.4)	57 (3.4)	64 (5)	16 (6)
None → LAMA → ICS + LABA + LAMA	9 (3.1)	84 (5)	41 (3.2)	13 (4.5)
None → ICS → ICS + LABA → ICS + LABA + LAMA	12 (4.1)	54 (3.3)	45 (3.6)	7 (2.4)
LAMA → ICS + LABA + LAMA	5 (1.7)	63 (3.8)	30 (2.4)	9 (3.1)
SABA → ICS → ICS + LABA → ICS + LABA + LAMA	8 (2.7)	40 (2.4)	39 (3.1)	4 (1.4)
SABA + SAMA → ICS + LABA → ICS + LABA + LAMA	7 (2.4)	35 (2.1)	41 (3.2)	7 (2.4)
SABA → LAMA → ICS + LABA + LAMA	8 (2.7)	48 (2.9)	20 (1.6)	1 (0.3)
ICS → ICS + LAMA → ICS + LABA + LAMA	7 (2.4)	33 (2.0)	20 (1.6)	6 (2.1)
ICS → ICS + LABA + LAMA	5 (1.7)	26 (1.6)	16 (1.3)	3 (1.0)
ICS + LAMA → ICS + LABA + LAMA	6 (2.0)	19 (1.1)	16 (1.3)	6 (2.1)
LABA → ICS + LABA → ICS + LABA + LAMA	3 (1.0)	21 (1.3)	10 (0.8)	6 (2.1)
None → LABA → ICS + LABA → ICS + LABA + LAMA	5 (1.7)	15 (0.9)	14 (1.1)	4 (1.4)
Other non-frequent pathways	42 (14)	263 (16)	187 (15)	43 (15)
Total	295 (100)	1,660 (100)	1,264 (100)	286 (100)

Notes: Pathways with a percent frequency of less than 1% were grouped under the category "other non-frequent pathways". The first drug listing in the treatment pathway was considered to be the patient's initial therapy, and the second drug listing was the prescription after the initial date of COPD diagnosis. All percentage values >5.0 were rounded up.

Abbreviations: GOLD, The Global initiative for chronic Obstructive Lung Disease; ICS, inhaled corticosteroid; LABA, long-acting β_2 -agonist; LAMA, long-acting muscarinic antagonist; SABA, short-acting β_2 -agonist; SAMA, short-acting muscarinic antagonist.

where the percentage of TT being prescribed to GOLD A, B, and C patients pre-COPD and post-COPD diagnosis was similar. One could assume that administration of TT is optimal for patients with COPD, because they receive optimal bronchodilation plus anti-inflammatory therapy, but to date there is no conclusive evidence on the superiority of dual-bronchodilation with an ICS (TT) over other therapy options, in particular in patients at low risk of exacerbations.^{9,10}

We next examined the pathways to TT, with the most common pathway being ICS plus LABA → TT. This results in the issue that once patients are started on ICS plus LABA, the next therapeutic option is inevitably TT. It is also key to note that, of all the pathways identified with a frequency above 1%, none contained dual bronchodilators (LABA plus LAMA) despite the LAMA tiotropium being available in the UK in 2002.³⁴ The recent WISDOM study evaluated the impact of stepping patients down from TT to dual bronchodilators. Results from this study demonstrated that even in severe and very severe COPD patients, the medium-term risk of moderate or severe exacerbations was similar between patients who were taken off ICS in a stepwise approach, and those who continued to receive ICS as part of TT.³⁰ This removal of ICS has also been supported in the INSTEAD study where the withdrawal of ICS therapy from patients receiving ICS plus LABA, contrary to guidelines recommendations, did not have a negative impact on lung function and symptoms when compared to patients

who remained on ICS plus LABA.^{21,40} There is also real-world evidence to further confirm the ability to withdraw ICS, as demonstrated by the OPTIMO study.⁴¹ These studies indicate that many patients with COPD do not need ICS therapy, which suggests that the appropriate role of ICS in COPD management has not been truly established.⁴⁰ Furthermore, such studies support the possibility of stepping back from ICS-containing regimes in patients who do not require them.

When the pathways to TT were further examined according to mMRC scores (dyspnea) and lung function impairment, it was observed that these had no impact on the pathways to TT, with ICS plus LABA → TT being the most common pathway to TT. A similar scenario, whereby lung function did not influence the prescription of therapies to COPD patients, has been previously reported. In the INSTEAD study, patients were receiving ICS plus LABA for 3 or more months prior to enrolling, despite having a mean FEV₁ of 64% and having no history of exacerbations.^{21,40} Contrary to mMRC and lung function data, exacerbation history was observed to have an impact on the prescription pathways to TT, specifically on the pathway ICS plus LABA → TT. Overall, this reconfirms the point that starting patients with COPD on ICS plus LABA inevitably results in the drift to TT, irrespective of severity of lung function impairment and breathlessness. While it was observed that patients with a previous history of exacerbations are justified to be prescribed TT, in this study it was also

relatively common for patients with no exacerbation history, or with low symptoms or protected lung function, to eventually drift to TT, without being prescribed more appropriate therapies like dual bronchodilators. This highlights the need to amend behavior and provide better education on how exacerbations in COPD can be avoided and what are the recommended therapeutic options for patients with COPD. It should be noted though that in the year prior to this study, approximately 14% of patients had frequent exacerbations compared with 67% of patients who did not experience any exacerbations. The addition of ICS would only be indicated in a subgroup of COPD patients where exacerbations required treatment with systemic corticosteroids (with or without antibiotics), not if these exacerbations were treated with antibiotics only.^{42,43} This is similar to data from a study by Lange et al⁴⁴ where approximately 2% and 7% of COPD patients had two or more exacerbations a year (frequent exacerbators) in COPD GOLD stages 2 and 3, respectively. It is important to highlight that, generally, there are lower frequencies of frequent exacerbators in primary-care-based COPD studies (eg, OPCRD) and population-based COPD studies (eg, Copenhagen studies and Rotterdam Study) when compared with secondary-/tertiary-care-based studies, such as the ECLIPSE study (22%, 33%, and 49% in COPD GOLD stage 2, 3, and 4, respectively).⁴⁵

From the observed pathways to TT, it was particularly evident that there was extensive overuse of ICS within the frequent pathways, especially in patients with no indication for ICS. NICE specifically recommends that ICS should be given to patients with a $FEV_1 < 50\%$ and two or more exacerbations in the past 12 months.⁴ ICS is also indicated for patients who have asthma and COPD, and for COPD patients who are frequent exacerbators.⁴⁶ Previous studies have also reported the inappropriate use of ICS,^{5,6,12–17} which can add unnecessary additional health care costs⁴⁷ without providing any superior efficacy.^{10,21,29–31} Aside from efficacy and cost concerns with the overuse of ICS, there is a safety concern, whereby the long-term exposure to ICS can result in several side effects which include pneumonia,²⁶ osteoporosis,²⁵ diabetes,²⁴ cataracts,²² and tuberculosis.²³ With respect to pneumonia, studies have demonstrated that ICS use was associated with a 70% increase in the rate of hospitalization for pneumonia²⁷ and a 69% increase in serious pneumonia, defined as hospitalization for or death from pneumonia.²⁸ A recent real-world study by Harries et al³² has indicated that despite the increases in prescribing of LABA plus ICS combinations in the UK, the rate of COPD hospitalizations has not reduced. The high use of ICS could be due to the fact that clinicians are more confident in maintaining patients on ICS than switching to other therapies,⁴⁸ along with the fact

that GOLD always cites ICS first (before LABA and LAMA) in the treatment recommendations, which is based on “alphabetical order” instead of the most important drug/drugs being cited first (long-acting bronchodilators). Additionally, no fixed combination dual bronchodilators were available previously. GOLD recommendations for primary-care patients are based on randomized clinical trials and observational studies usually performed in secondary and tertiary care, such as ELIPSE,⁴⁹ which may overestimate the occurrence of COPD exacerbations, as well as the benefits of ICS.

There are limitations to this study that have to be acknowledged. The data presented here are historical, and the quality of the data is dependent on coding used in the clinical records, although prescribing and quality outcome framework-related data were well recorded. No centralized spirometry was carried out so the quality of spirometry could impact on the data collected and classification of patients into the relevant GOLD groups. Only one-quarter of all patients met entry criteria, which could mean that the treatment received by the patients in the study was not typical of all patients. GOLD categories might not necessarily be the best way to assess prescribing practices for COPD patients, given that FEV_1 is a poor guide to future exacerbations, but symptoms, lung function, and exacerbations seemed to have little impact on prescribing patterns within this study.

Prescription pathways leading to TT in COPD patients without asthma highlight the common practice of prescribing ICS-containing regimens and overuse of TT, particularly in low-risk patients. The results also highlight the relatively low prescribing of bronchodilators as first-line therapy. This reflects the persistent uncertainties of physicians in prescribing the most appropriate therapy to patients with COPD, and emphasizes that more efforts are required to improve education on and the implementation of COPD guidelines regarding COPD therapies.

Acknowledgments

The analyses reported in this study were funded by Novartis Pharma AG (Basel, Switzerland) and were conducted by Research in Real-Life Ltd (Cambridge, UK), an independent company. The authors also thank David Bergin, Danielle Corbett, and Vivek Khanna (professional medical writers; Novartis) for assistance in the preparation of this paper. Writing support was funded by Novartis Pharma AG. The present affiliation of M Baldwin is Boehringer Ingelheim, Frankfurt, Germany.

Disclosure

D Price has board membership with Aerocrine, Almirall, Amgen Inc., AstraZeneca plc, Boehringer Ingelheim, Chiesi,

Meda, Mundipharma, Napp, Novartis International AG, and Teva; consultancy with Aerocrine, Almirall, Amgen Inc., AstraZeneca plc, Boehringer Ingelheim, Chiesi, GlaxoSmithKline plc, Meda, Mundipharma, Napp, Novartis International AG, Pfizer, Inc., and Teva; grants and unrestricted funding for investigator-initiated studies from UK National Health Service, British Lung Foundation, Aerocrine, AKL Ltd, Almirall, AstraZeneca plc, Boehringer Ingelheim, Chiesi, Eli Lilly, GlaxoSmithKline plc, Meda, Merck & Co., Inc., Mundipharma, Napp, Novartis International AG, Orion, Pfizer, Inc., Respiratory Effectiveness Group, Takeda, Teva, and Zentiva; payments for lectures/speaking from Almirall, AstraZeneca plc, Boehringer Ingelheim, Chiesi, Cipla, GlaxoSmithKline plc, Kyorin, Meda, Merck & Co., Inc., Mundipharma, Novartis International AG, Pfizer, Inc., SkyePharma, Takeda, and Teva; payment for manuscript preparation from Mundipharma and Teva; patents (planned, pending, or issued) with AKL Ltd.; payment for the development of educational materials from GlaxoSmithKline plc and Novartis International AG; stock/stock options/shares in AKL Ltd which produces phytopharmaceuticals and owns 80% of Research in Real Life Limited and its subsidiary social enterprise Optimum Patient Care; received payment for travel/accommodations/meeting expenses from Aerocrine, Boehringer Ingelheim, Mundipharma, Napp, Novartis International AG, and Teva; funding for patient enrolment or completion of research from Almirall, Chiesi, Teva, and Zentiva; and peer reviewer for grant committees with Medical Research Council (2014), Efficacy and Mechanism Evaluation programme (2012), and HTA (2014). G Brusselle has, within the last 5 years, received honoraria for lectures from AstraZeneca plc, Boehringer Ingelheim, Chiesi, GlaxoSmithKline plc, Merck & Co., Inc., Novartis International AG, Pfizer, Inc., and UCB; and he is a member of advisory boards for AstraZeneca plc, Boehringer Ingelheim, GlaxoSmithKline plc, and Novartis International AG. K Gruffydd-Jones acted as a consultant for and has spoken on behalf of AstraZeneca plc, Novartis International AG, GlaxoSmithKline plc, Teva, Chiesi, and Boehringer Ingelheim. M Miravittles has received speaker fees from Almirall, Boehringer Ingelheim, Pfizer, Inc., AstraZeneca plc, Chiesi, GlaxoSmithKline plc, Menarini, Grifols, and Novartis International AG, and consulting fees from Almirall, Boehringer Ingelheim, Pfizer, Inc., GlaxoSmithKline plc, Gebro Pharma, CLS Behring, Cipla, MediImmune, Takeda, Novartis International AG, and Grifols. DL Keininger is an employee of Novartis International AG. R Stewart is an employee of Research in Real Life Limited. M Baldwin, at time of this project, was an employee of Novartis International AG Research and Development, Horsham, UK, and now is

an employee of Boehringer Ingelheim, Ingelheim, Germany. R Jones reports personal fees from Almirall, AstraZeneca plc, Boehringer Ingelheim, Chiesi, Cipla, GlaxoSmithKline plc, and Health Intelligence; grants, personal fees, and nonfinancial support from Novartis International AG; and personal fees and nonfinancial support from Napp/Mundipharma, Optimal Patient Care, and Respiratory Education Alliance. The authors report no other conflicts of interest in this work.

References

1. Chapman KR, Mannino DM, Soriano JB, et al. Epidemiology and costs of chronic obstructive pulmonary disease. *Eur Respir J*. 2006;27(1):188–207.
2. Global Initiative for Chronic Obstructive Lung Disease. *Global strategy for the diagnosis, management, and prevention of chronic obstructive pulmonary disease*. Global Initiative for Chronic Obstructive Lung Disease; 2015. Available from: http://www.goldcopd.org/uploads/users/files/GOLD_Report_2015.pdf. Accessed July 2, 2015.
3. Global Initiative for Chronic Obstructive Lung Disease. *Global strategy for the diagnosis, management, and prevention of chronic obstructive pulmonary disease*. Global Initiative for Chronic Obstructive Lung Disease; 2013. Available from: http://www.goldcopd.org/uploads/users/files/GOLD_Report_2013_Feb20.pdf. Accessed July 2, 2015.
4. National Institute for Health and Care Excellence. *Chronic obstructive pulmonary disease: Management of chronic obstructive pulmonary disease in adults in primary and secondary care*. London: National Institute for Health and Care Excellence; 2004. Available from: <https://www.nice.org.uk/guidance/cg101/evidence/cg101-chronic-obstructive-pulmonary-disease-update-full-guideline2>. Accessed July 2, 2015.
5. Asche CV, Leader S, Plauschinat C, et al. Adherence to current guidelines for chronic obstructive pulmonary disease (COPD) among patients treated with combination of long-acting bronchodilators or inhaled corticosteroids. *Int J Chron Obstruct Pulmon Dis*. 2012;7:201–209.
6. Fitch K, Iwasaki K, Pyenson B, Plauschinat C, Zhang J. Variation in adherence with Global Initiative for Chronic Obstructive Lung Disease (GOLD) drug therapy guidelines: a retrospective actuarial claims data analysis. *Curr Med Res Opin*. 2011;27(7):1425–1429.
7. Masoompour SM, Mohammadi A, Mahdaviazad H. Adherence to the Global Initiative for Chronic Obstructive Lung Disease guidelines for management of COPD: a hospital-base study. *Clin Respir J*. Epub 2014 Oct 13.
8. Miravittles M, Sicras A, Crespo C, et al. Costs of chronic obstructive pulmonary disease in relation to compliance with guidelines: a study in the primary care setting. *Ther Adv Respir Dis*. 2013;7(3):139–150.
9. Canadian Agency for Drugs and Technologies in Health (CADTH). Triple Therapy for Moderate-to-Severe Chronic Obstructive Pulmonary Disease. *CADTH Technol Overv*. 2010;1(4):e0129.
10. Gaebel K, McIvor RA, Xie F, et al. Triple therapy for the management of COPD: a review. *COPD*. 2011;8(3):206–243.
11. Karner C, Cates CJ. The effect of adding inhaled corticosteroids to tiotropium and long-acting beta(2)-agonists for chronic obstructive pulmonary disease. *Cochrane Database Syst Rev*. 2011;(9):CD009039.
12. Jochmann A, Neubauer F, Miedinger D, Schaefroth S, Tamm M, Leuppi JD. General practitioner's adherence to the COPD GOLD guidelines: baseline data of the Swiss COPD Cohort Study. *Swiss Med Wkly*. Epub 2010 April 21.
13. Suissa S, Barnes PJ. Inhaled corticosteroids in COPD: the case against. *Eur Respir J*. 2009;34(1):13–16.
14. Corrado A, Rossi A. How far is real life from COPD therapy guidelines? An Italian observational study. *Respir Med*. 2012;106(7):989–997.
15. de Miguel-Diez J, Carrasco-Garrido P, Rejas-Gutierrez J, et al. Inappropriate overuse of inhaled corticosteroids for COPD patients: impact on health costs and health status. *Lung*. 2011;189(3):199–206.

16. Franssen FM, Spruit MA, Wouters EF. Determinants of polypharmacy and compliance with GOLD guidelines in patients with chronic obstructive pulmonary disease. *Int J Chron Obstruct Pulmon Dis*. 2011;6:493–501.
17. Wong GW, Miravittles M, Chisholm A, Krishnan JA. Respiratory guidelines – which real world? *Ann Am Thorac Soc*. 2014;11 Suppl 2: S85–S91.
18. Calverley P, Pauwels R, Vestbo J, et al. Combined salmeterol and fluticasone in the treatment of chronic obstructive pulmonary disease: a randomised controlled trial. *Lancet*. 2003;361(9356):449–456.
19. Jones PW, Willits LR, Burge PS, Calverley PM; Inhaled Steroids in Obstructive Lung Disease in Europe study investigators. Disease severity and the effect of fluticasone propionate on chronic obstructive pulmonary disease exacerbations. *Eur Respir J*. 2003;21(1):68–73.
20. Mahler DA, Wire P, Horstman D, et al. Effectiveness of fluticasone propionate and salmeterol combination delivered via the Diskus device in the treatment of chronic obstructive pulmonary disease. *Am J Respir Crit Care Med*. 2002;166(8):1084–1091.
21. Rossi A, van der Molen T, del Olmo R, et al. INSTEAD: a randomised switch trial of indacaterol versus salmeterol/fluticasone in moderate COPD. *Eur Respir J*. 2014;44(6):1548–1556.
22. Cumming RG, Mitchell P, Leeder SR. Use of inhaled corticosteroids and the risk of cataracts. *N Engl J Med*. 1997;337(1):8–14.
23. Kim JH, Park JS, Kim KH, Jeong HC, Kim EK, Lee JH. Inhaled corticosteroid is associated with an increased risk of TB in patients with COPD. *Chest*. 2013;143(4):1018–1024.
24. Suissa S, Kezouh A, Ernst P. Inhaled corticosteroids and the risks of diabetes onset and progression. *Am J Med*. 2010;123(11):1001–1006.
25. Weatherall M, James K, Clay J, et al. Dose-response relationship for risk of non-vertebral fracture with inhaled corticosteroids. *Clin Exp Allergy*. 2008;38(9):1451–1458.
26. DiSantostefano RL, Sampson T, Le HV, Hinds D, Davis KJ, Bakerly ND. Risk of pneumonia with inhaled corticosteroid versus long-acting bronchodilator regimens in chronic obstructive pulmonary disease: a new-user cohort study. *PLoS One*. 2014;9(5):e97149.
27. Ernst P, Gonzalez AV, Brassard P, Suissa S. Inhaled corticosteroid use in chronic obstructive pulmonary disease and the risk of hospitalization for pneumonia. *Am J Respir Crit Care Med*. 2007;176(2):162–166.
28. Suissa S, Patenaude V, Lapi F, Ernst P. Inhaled corticosteroids in COPD and the risk of serious pneumonia. *Thorax*. 2013;68(11):1029–1036.
29. Kraemer M, Ellis A, Baldwin M, Jansen JP, Capkun-Niggli G, Cope S. PRS₅ dual bronchodilation with indacaterol and tiotropium in combination versus triple therapy, fixed-dose combinations, and monotherapy in COPD – a network meta-analysis of FEV₁. *Value in Health*. 15(7):A560.
30. Magnussen H, Disse B, Rodriguez-Roisin R, et al. Withdrawal of inhaled glucocorticoids and exacerbations of COPD. *N Engl J Med*. 2014; 371(14):1285–1294.
31. Vogelmeier CF, Bateman ED, Pallante J, et al. Efficacy and safety of once-daily QVA149 compared with twice-daily salmeterol-fluticasone in patients with chronic obstructive pulmonary disease (ILLUMINATE): a randomised, double-blind, parallel group study. *Lancet Respir Med*. 2013;1(1):51–60.
32. Harries TH, Seed PT, Jones S, Schofield P, White P. Chronic obstructive pulmonary disease hospital admissions and drugs – unexpected positive associations: a retrospective general practice cohort study. *NPJ Prim Care Respir Med*. 2014;24:14006.
33. Optimum Patient Care Research Database (OPCRD) [webpage on the Internet]. Cambridge: Optimum Patient Care; 2014. Available from: http://www.optimumpatientcare.org/Html_Docs/OPCRD.html. Accessed July 2, 2015.
34. Yohannes AM, Connolly MJ, Hanania NA. Ten years of tiotropium: clinical impact and patient perspectives. *Int J Chron Obstruct Pulmon Dis*. 2013;8:117–125.
35. 2014/15 General Medical Services (GMS) Contract Quality and Outcomes Framework (QOF) [webpage on the Internet]. London: British Medical Association; 2014. Available from: <http://bma.org.uk/practical-support-at-work/contracts/independent-contractors/qof-guidance>. Accessed July 2, 2015.
36. Miyazaki M, Nakamura H, Takahashi S, et al. The reasons for triple therapy in stable COPD patients in Japanese clinical practice. *Int J Chron Obstruct Pulmon Dis*. 2015;10:1053–1059.
37. Burgel PR, Deslée G, Jebrak G, et al. Real-life use of inhaled corticosteroids in COPD patients versus the GOLD proposals: a paradigm shift in GOLD 2011? *Eur Respir J*. 2014;43(4):1201–1203.
38. Papala M, Kerenidi N, Gourgoulianis KI. Everyday clinical practice and its relationship to 2010 and 2011 GOLD guideline recommendations for the management of COPD. *Prim Care Respir J*. 2013;22(3):362–364.
39. Safka K, McIvor L, McIvor A. P252 Gold Category And Optimal Management: A Canadian Perspective. *Thorax*. 2014;69:A187–A188.
40. Calverley PM. What to use INSTEAD of inhaled corticosteroids in COPD? *Eur Respir J*. 2014;44(6):1391–1393.
41. Rossi A, Guerriero M, Corrado A; OPTIMO/AIPO Study Group. Withdrawal of inhaled corticosteroids can be safe in COPD patients at low risk of exacerbation: a real-life study on the appropriateness of treatment in moderate COPD patients (OPTIMO). *Respir Med*. 2014;15:77.
42. Brusselle GG, Bracke K, Lahousse L. Targeted therapy with inhaled corticosteroids in COPD according to blood eosinophil counts. *Lancet Respir Med*. 2015;3(6):416–417.
43. Pascoe S, Locantore N, Dransfield MT, Barnes NC, Pavord ID. Blood eosinophil counts, exacerbations, and response to the addition of inhaled fluticasone furoate to vilanterol in patients with chronic obstructive pulmonary disease: a secondary analysis of data from two parallel randomised controlled trials. *Lancet Respir Med*. 2015;3(6):435–442.
44. Lange P, Marott JL, Vestbo J, et al. Prediction of the clinical course of chronic obstructive pulmonary disease, using the new GOLD classification: a study of the general population. *Am J Respir Crit Care Med*. 2012;186(10):975–981.
45. Brusselle G. Why doesn't reducing exacerbations decrease COPD mortality? *Lancet Respir Med*. 2014;2(9):681–683.
46. Price D, Yawn B, Brusselle G, Rossi A. Risk-to-benefit ratio of inhaled corticosteroids in patients with COPD. *Prim Care Respir J*. 2013;22(1): 92–100.
47. White P, Thornton H, Pinnock H, Georgopoulou S, Booth HP. Overtreatment of COPD with inhaled corticosteroids – implications for safety and costs: cross-sectional observational study. *PLoS One*. 2013;8(10):e75221.
48. Sin DD, Man SF. Steroids in COPD: still up in the air? *Eur Respir J*. 2010;35(5):949–951.
49. Hurst JR, Vestbo J, Anzueto A, et al. Susceptibility to exacerbation in chronic obstructive pulmonary disease. *N Engl J Med*. 2010;363(12): 1128–1138.

International Journal of COPD

Publish your work in this journal

The International Journal of COPD is an international, peer-reviewed journal of therapeutics and pharmacology focusing on concise rapid reporting of clinical studies and reviews in COPD. Special focus is given to the pathophysiological processes underlying the disease, intervention programs, patient focused education, and self management protocols.

Submit your manuscript here: <http://www.dovepress.com/international-journal-of-chronic-obstructive-pulmonary-disease-journal>

Dovepress

This journal is indexed on PubMed Central, MedLine and CAS. The manuscript management system is completely online and includes a very quick and fair peer-review system, which is all easy to use. Visit <http://www.dovepress.com/testimonials.php> to read real quotes from published authors.