

2022

# Quantifying beach variability along the Teignmouth-Dawlish seawall

Perry, C.

Perry, C. (2022) 'Quantifying beach variability along the Teignmouth-Dawlish seawall', The Plymouth Student Scientist, 15(1), pp. 104-145.

<http://hdl.handle.net/10026.1/19456>

---

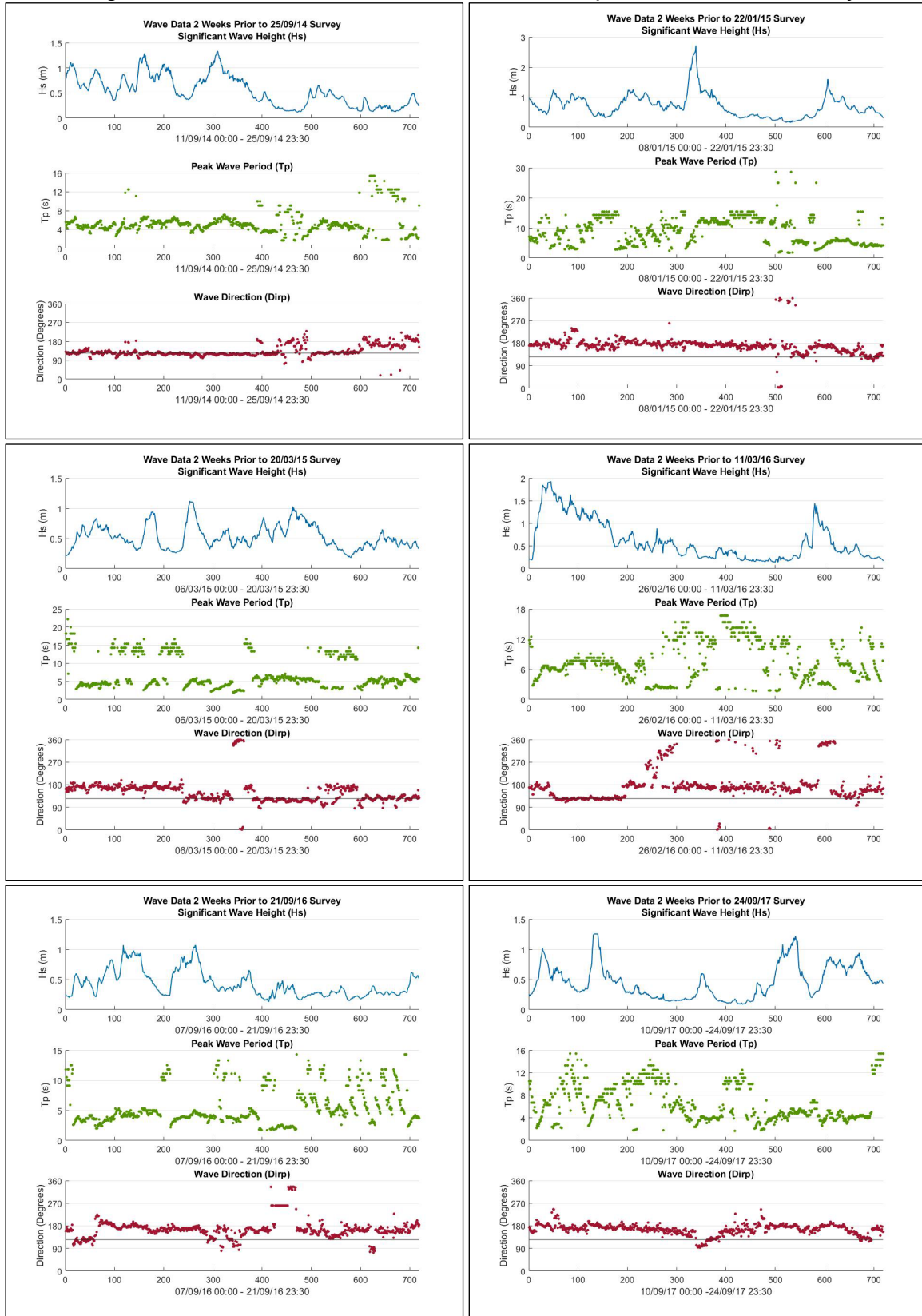
The Plymouth Student Scientist  
University of Plymouth

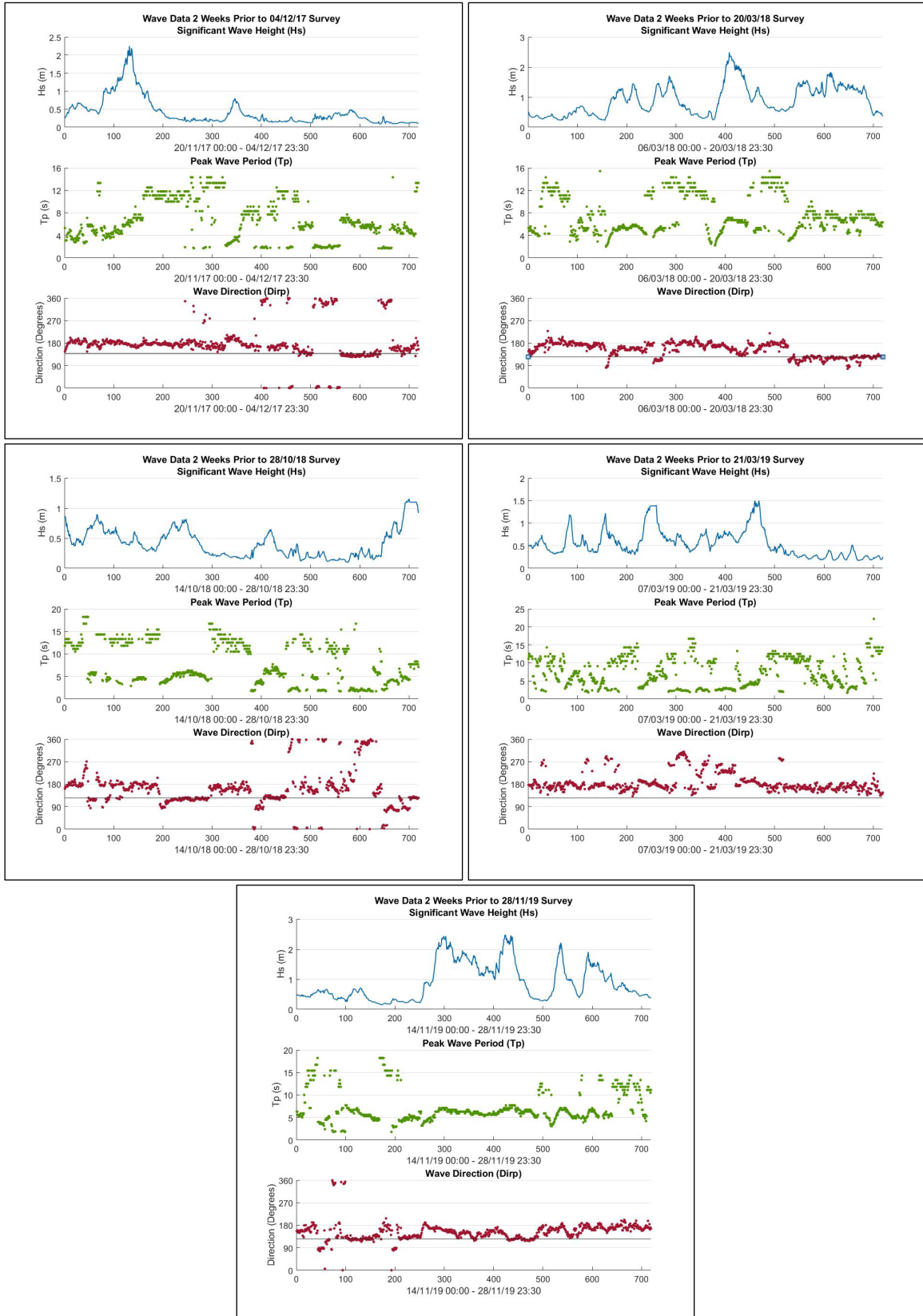
---

*All content in PEARL is protected by copyright law. Author manuscripts are made available in accordance with publisher policies. Please cite only the published version using the details provided on the item record or document. In the absence of an open licence (e.g. Creative Commons), permissions for further reuse of content should be sought from the publisher or author.*

## Appendix A

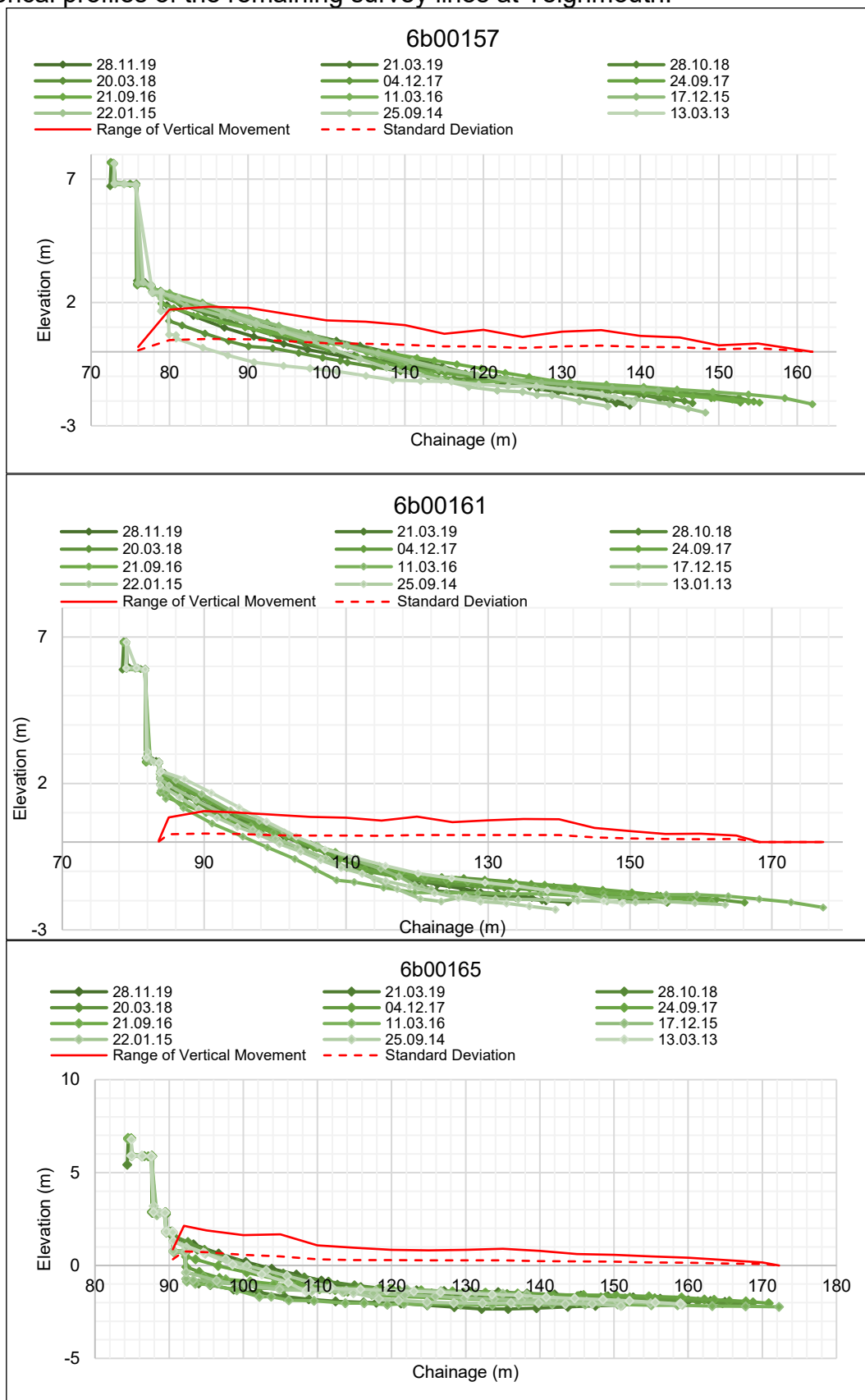
Plots showing significant wave height ( $H_s$ ), peak wave period ( $T_p$ ) and wave direction ( $Dir_p$ ) data two weeks prior to each of the surveys at Teignmouth. The shore-normal line for Teignmouth is indicated on the wave direction plots with a flat line at  $y = 125^\circ$ .

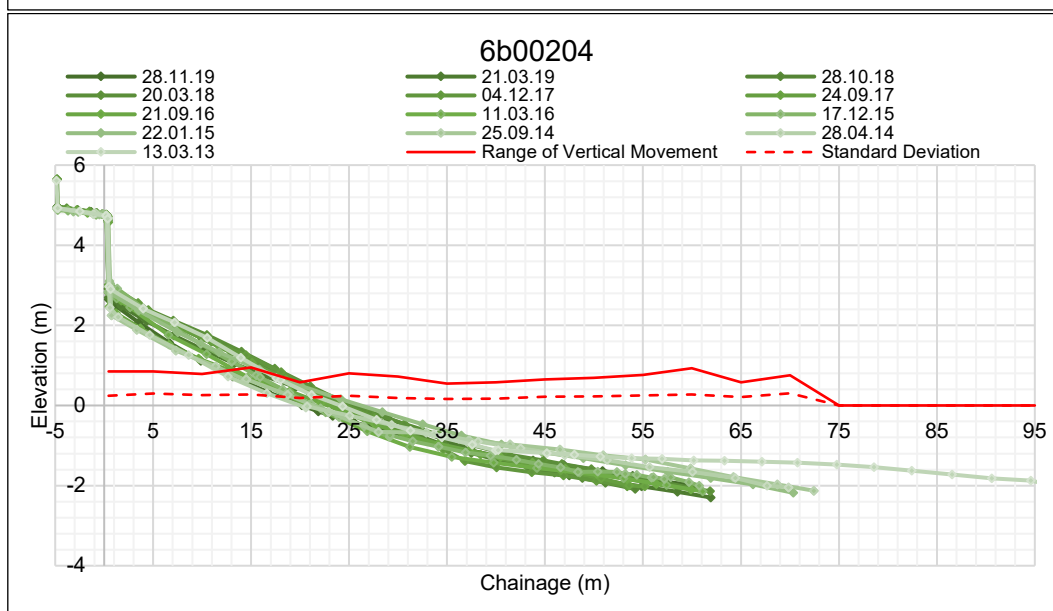
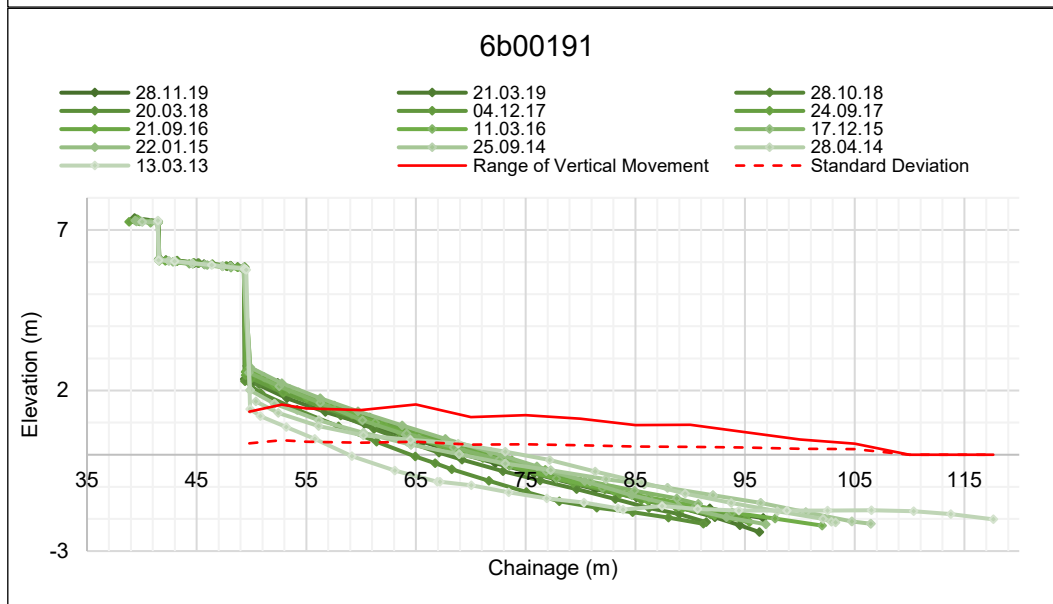
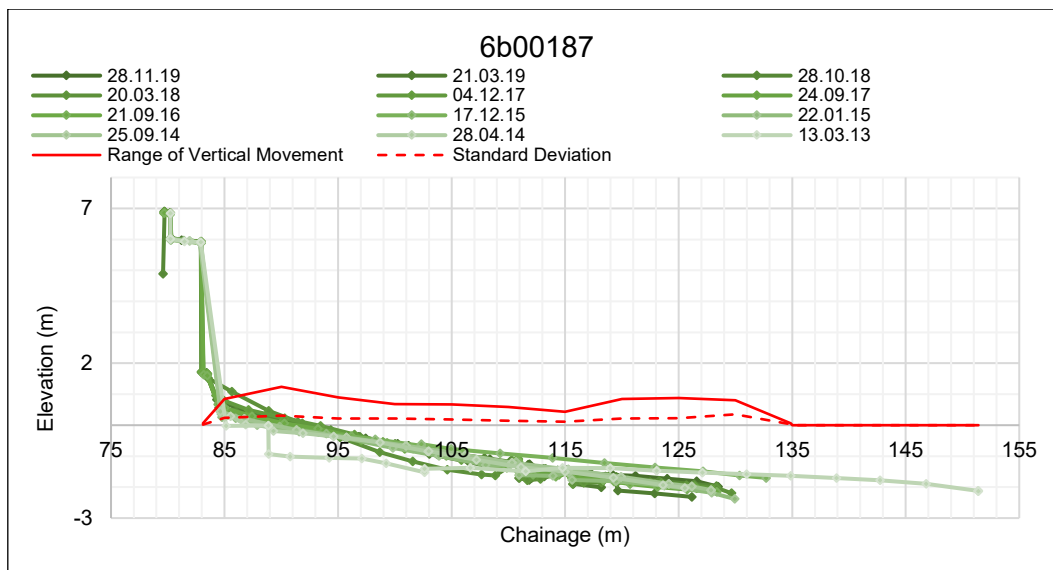




## Appendix B

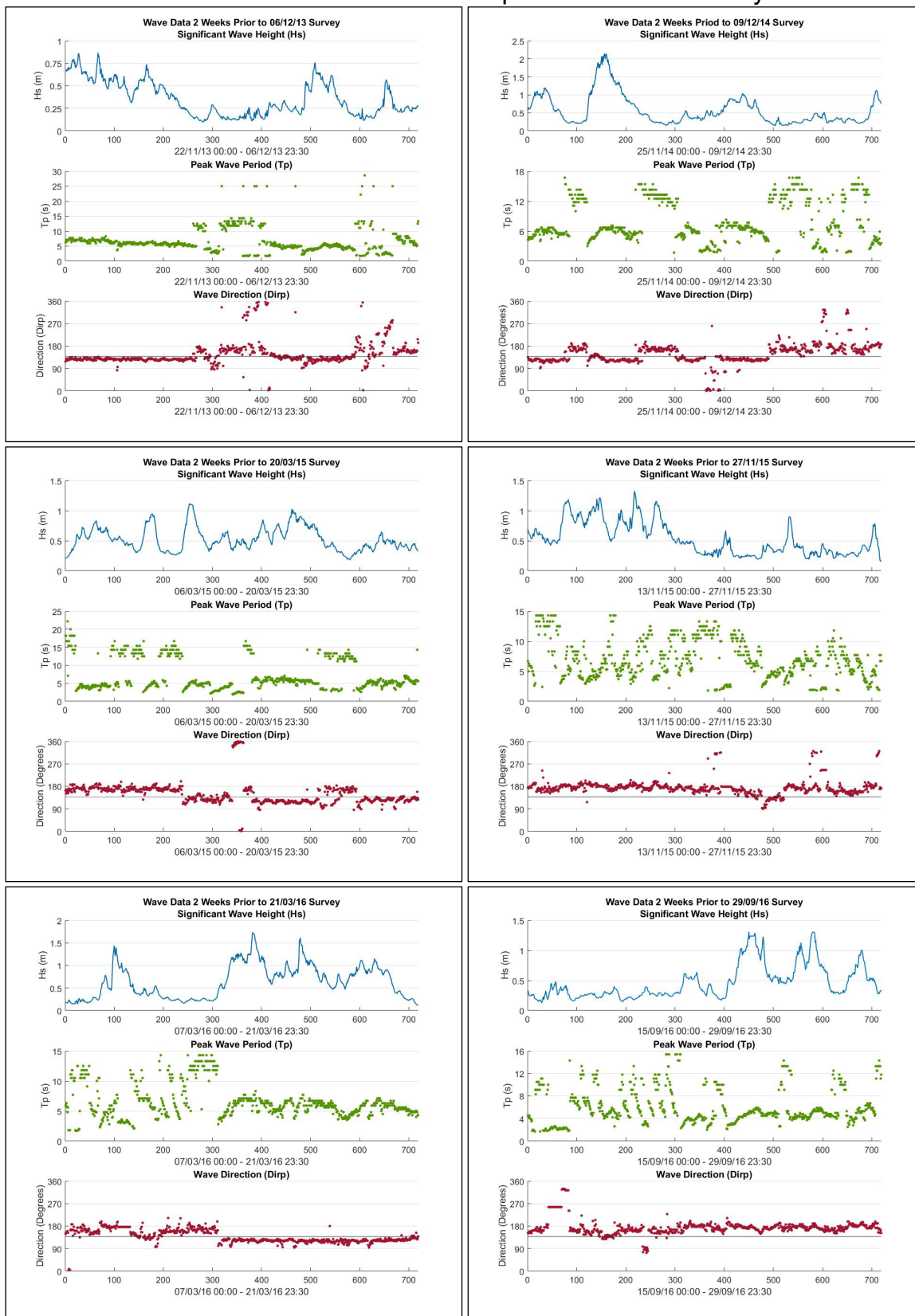
Historical profiles of the remaining survey lines at Teignmouth.



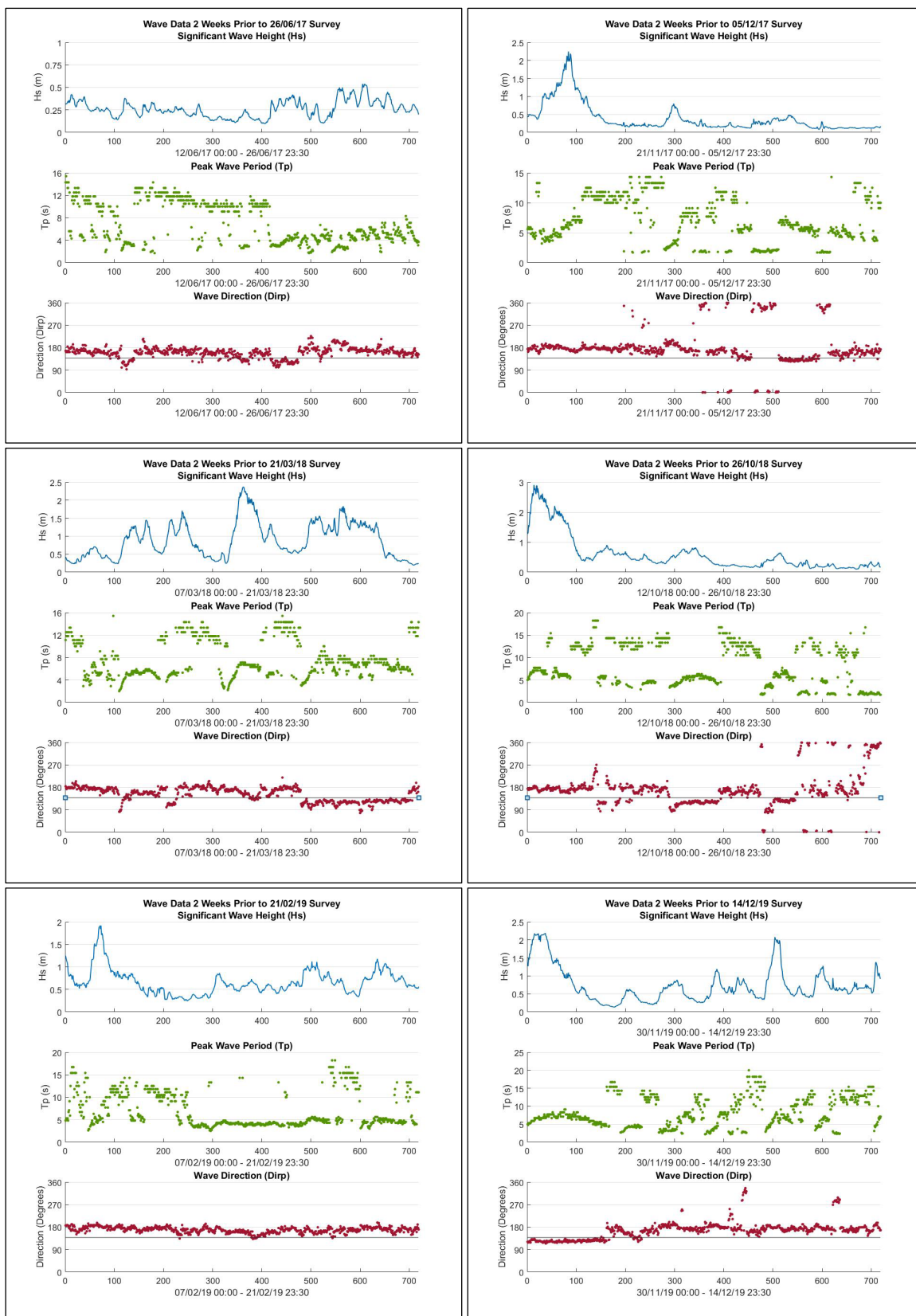


## Appendix C

Plots showing significant wave height ( $H_s$ ), peak wave period ( $T_p$ ) and wave direction (Dirp) data two weeks prior to each of the surveys at Dawlish. The shore-normal line for Dawlish is indicated on the wave direction plots with a flat line at  $\gamma = 138^\circ$ .







## Appendix D

Historical Profiles for the remaining survey lines at Dawlish.

