

2021-01-01

# Using Dartmoor ponies in conservation grazing to reduce *Molinia caerulea* dominance and encourage germination of *Calluna vulgaris* in heathland vegetation on Dartmoor, UK

Lunt, P

<http://hdl.handle.net/10026.1/17512>

---

10.52201/cej18svsr7750

Conservation Evidence Journal

Department of Zoology, University of Cambridge

---

*All content in PEARL is protected by copyright law. Author manuscripts are made available in accordance with publisher policies. Please cite only the published version using the details provided on the item record or document. In the absence of an open licence (e.g. Creative Commons), permissions for further reuse of content should be sought from the publisher or author.*

# Using Dartmoor ponies in conservation grazing to reduce *Molinia caerulea* dominance and encourage germination of *Calluna vulgaris* in heathland vegetation on Dartmoor, UK

Paul H. Lunt<sup>1\*</sup>, Jakob L. Leigh<sup>1</sup>, Samantha A. McNeil<sup>1</sup> & Malcolm J. Gibb<sup>2</sup>

<sup>1</sup> University of Plymouth, School of Geography, Earth and Environmental Science, Portland Square, Drake Circus, Plymouth, Devon PL4 8AA, UK

<sup>2</sup> Retired, formerly of the Institute of Grassland and Environmental Research, North Wyke, Devon EX20 2SB

## SUMMARY

The increasing dominance of purple moor-grass *Molinia caerulea* in heathland ecosystems in the UK is of growing concern due to its detrimental impact on plant and animal diversity on sites of nature conservation interest. The use of free-ranging ponies to reduce *Molinia* dominance was investigated from 2017 to 2019 within a 425 ha site on Dartmoor, UK. Salt blocks were used to attract the ponies to a *Molinia*-dominated area of heath within the site, away from their previously-preferred grazing areas. The impact of pony grazing was assessed by measurements of vegetation structure and plant species composition. The increased presence of ponies in the vicinity of the salt blocks increased the percentage occurrence of bare ground, reduced sward surface height, reduced percentage occurrence of *Molinia* and increased the germination of heather *Calluna vulgaris* seedlings. The conclusions of this research are that salt blocks can be used to attract ponies to graze targeted areas of *Molinia*-dominated heathland. Through their grazing and trampling, ponies can reduce the dominance of *Molinia*, leading to an increase in the germination and establishment of heather seedlings.

## BACKGROUND

Heather-dominated upland heaths are of international importance for nature conservation, supporting a range of specialist invertebrate and bird species (Mitchell *et al.* 2008). Upland heathland, a Priority Habitat listed in Section 41 of the NERC Act 2006 (JNCC 2008), has been in decline since the 1950s in the UK and Europe due in part to increased nitrogen deposition and rainfall (Sala *et al.* 2000, Murphy *et al.* 2019), leading to an increase in the dominance of *Molinia* (Milligan *et al.* 2004) - a growing concern for nature conservation and habitat management (Chambers *et al.* 1999, Mitchell *et al.* 2008).

*Molinia* is a perennial, tussock-forming grass species, which prevents the regeneration of heather. Growth commences in early spring with rapidly growing, young leaves, which, by late spring, out-compete heather seedlings for light and space. By mid-July, ungrazed, senescent *Molinia* leaves become coarse and, during autumn and winter, form a thick raffia-like mat, which smothers other heathland plants. Cutting or managed burning regimes alongside livestock grazing are typically used to maintain upland dry heathland (Legg *et al.* 1992, Mitchell *et al.* 2008, Critchley *et al.* 2013). Any management to reduce *Molinia* should be considerate of the potential to release CO<sub>2</sub> from valuable carbon stores on peaty soils and the appropriateness and availability of livestock for grazing (Marrs *et al.* 2004). Studies have also shown that overgrazing and burning can lead to loss of heather and create *Molinia*-dominated areas with lower structural diversity (Ross *et al.* 2003, Yallop *et al.* 2006).

Much of the literature surrounding upland grazing focuses on sheep (Marrs *et al.* 2004) and cattle (Mitchell *et al.* 2008). Of the 15 studies from the UK, reviewed in Conservation Evidence (Dicks *et al.* 2020), nine found that appropriate management can help to maintain the conservation value of upland heath or moorland. Four studies found that a reduction in grazing increased heather cover. One study on heathland in northern Spain (Aldezabal *et al.* 2013), found that increasing the number of ponies present at the site reduced grass height in most cases. Cattle and ponies both consume grasses in preference to dwarf shrubs (Celaya *et al.* 2011). However, ponies have a greater preference for *Molinia* and a lower preference for heather in comparison to sheep and cattle (Celaya *et al.* 2011, Fraser *et al.* 2019). A study by Putman *et al.* (1987) in the New Forest, found that *Molinia* contributed on average 20% of summer diet in ponies. López López *et al.* (2019) suggested that equids are less able to tolerate the tannins in heather than are ruminants, such as sheep and cattle.

Equines require salt, specifically sodium chloride, in their diet (~50 g daily), as it is an essential metabolic requirement (Kaspari 2020). Sodium chloride occurs in low concentrations in plants. Ponies, in common with other herbivores, will seek mineral sources, such as salt deposits, to supplement their intake, particularly when grazing mineral poor pasture. There were two aims to this study: 1) examine whether salt blocks could be used to attract Dartmoor ponies to preferentially graze in selected *Molinia*-dominated areas, and 2) determine whether increased grazing and trampling of *Molinia* by ponies leads to an increase in germination and establishment of heather seedlings.

## Study Site

\*corresponding author email: paul.lunt@plymouth.ac.uk

The Bellever Forest site is located near Postbridge, within the Dartmoor National Park, UK (Figure 1). The total area of 425 ha is surrounded by stock-proof fencing, but with public access, and comprises 88 ha of a moorland Site of Special Scientific Interest (SSSI) and 337 ha of Sitka spruce *Picea sitchensis* plantation. The study was confined to Lakehead Hill (50°34'56" N, 3°55'03" W), an area of about 8 ha of moorland, comprising a narrow strip of land between spruce plantations (Figure 1) dominated by dense stands of *Molinia* tussocks with locally frequent, senescing mature heather plants. The soils on the hill consist of a mixture of shallow peat under 50 cm deep with occasional mineral exposure. The site has been leased by the Dartmoor Pony Heritage Trust since 2009 and, until 2017, was stocked year-round with 26 registered Dartmoor ponies. In 2018 and 2019 the number of ponies was reduced to 19 and 15, respectively. No cattle or sheep were present on the site. Prior to commencement of the study in 2017, anecdotal evidence provided by trust volunteer staff was that the ponies were rarely observed grazing on Lakehead Hill. The ponies' preferred grazing areas were on short turf vegetation, primarily 500 m to the south. The primary objective of the study, therefore, was to examine whether the ponies could be attracted to graze on the *Molinia*-dominated area of Lakehead Hill.

### Experimental Design

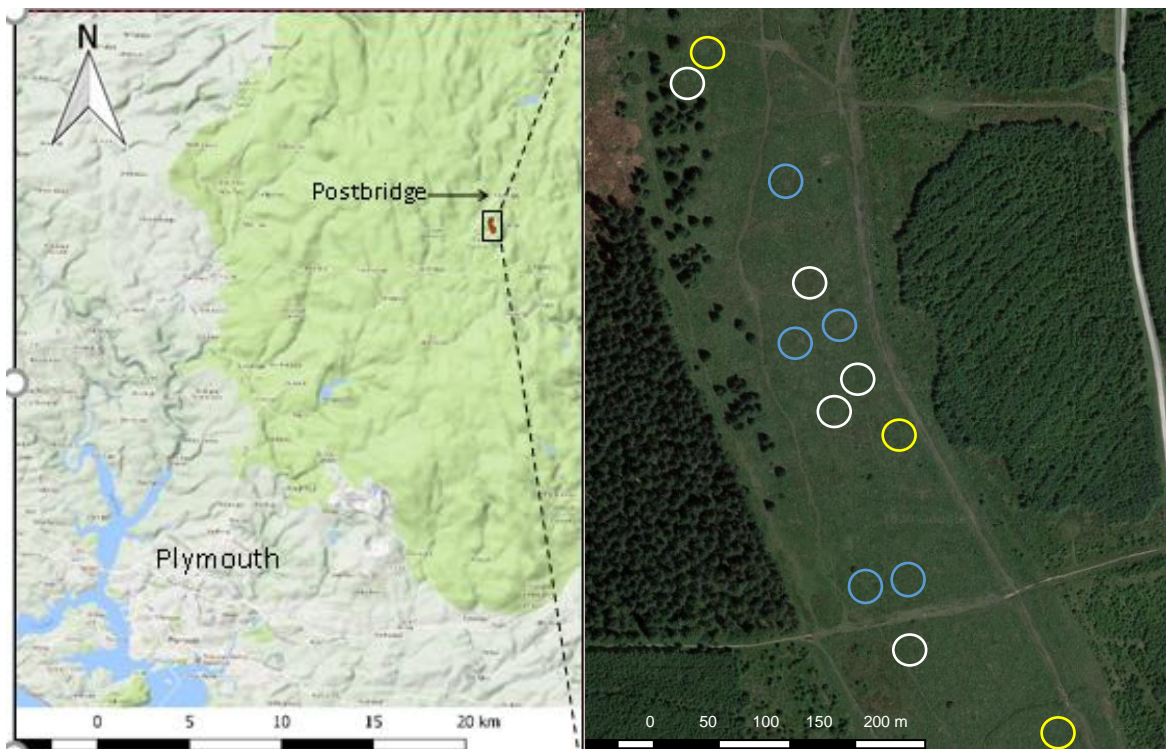
An unreplicated, before-and-after, controlled site comparison was carried out in 2017-2019. In March 2017, 10 circular plots (24 m diameter) were randomly selected within defined *Molinia*-dominated areas of Lakehead Hill. All plots were identified with centrally-located marker posts. Five plots were randomly assigned to receive a single salt block (Himalayan rock salt, 20 x 20 x 20 cm), attached to the marker post (treatment Salt), whilst the five remaining plots had no salt blocks (treatment No-salt). Following extreme trampling around the Salt posts in the first year, two adjustments were made to the experiment in the following two years. In order to avoid further trampling damage to vegetation and the underlying soil around the salt block posts, from March to September of 2018-2019, a salt block was attached to the central marker post of a single Salt plot. A replacement salt block was provided approximately every 3 weeks, randomly allocated to one of the five Salt plots.

In 2019, three further plots, within the *Molinia*-dominated area, were added (Figure 1) as control plots (Control) in order to assess the condition of the vegetation away from the Salt and No-salt plots.

### Sampling methods

In March 2017, before the installation of salt blocks, the following baseline data were collected on all 10 plots:

- (i) Sward surface height was measured at 1 m



**Figure 1.** Aerial image of the Lakehead study site (50°34'56"N, 3°55'03"W), with circles superimposed to show 12 m radius salt plots (blue), control plots with posts (white) and unmarked control plots (yellow). (Google Maps, 2019); (QGIS, 2019).

intervals on a transect 1–10 m from the plot centres, using a sward stick. Each transect was replicated 16 times on secondary inter-cardinal bearings (i.e. N,

### ACTION

NNE, NE etc.) from the centres of plots (192 measurements/plot).

(ii) Herbage mass was derived using a double-sample technique to establish a relationship between sward height, measured with a rising-plate metre (Ashgrove Co), and herbage dry matter harvested to ground level within a 30.5 cm diameter frame. Plate height measurements were then taken at intervals as for the sward height measurements.

In June 2019, the following measurements were made in all 13 plots:

(i) Sward height was measured at 1 m intervals, on transects 1–12 m from the plot centres as described above.

(ii) Number of heather seedlings, % *Molinia* cover and % bare ground was recorded within each of the six 0.5 m × 0.5 m gridded quadrats (individual counts made within 100 cells) at distances of 1, 2, 3, 4, 5, 7, 10 and 12 m from the plot centre on random compass bearings (i.e. 48 quadrats/plot).

(iii) Number and height of *Molinia* tussocks were also recorded in each of the above 0.5 m × 0.5 m quadrats.

(iv) A condition assessment of mature heather plants was carried out, in which all individual plants within Salt and No-salt plots were categorised as either healthy with green leaves or in poor condition (greater than 50% of branches senescent with sparse and discoloured leaves).

#### Data Analysis

Data were analysed using Microsoft Excel. One-way ANOVA was used to test for the effects of treatment on (i) sward height (cm) (ii) number and height of *Molinia* tussocks. A Tukey post-hoc test was used to test significant pair-wise comparisons following ANOVA tests. A two-sample t-test was used to compare heather condition in Salt plots to No-salt plots. Kruskal-Wallis non-parametric ANOVA was used to test for differences between treatments (Salt, No-salt, Control) for (i) bare ground (%), (ii) *Molinia* cover (%), and (iii) number of heather seedlings. A Nemenyi, post-hoc test was used to test significant pair-wise comparisons following Kruskal-Wallis tests. Spearman's rank coefficient ( $r_s$ ) was used to test the relationship between sward height and distance from the centre of plots.

#### CONSEQUENCES

Measurements of sward height and derived herbage mass before the introduction of salt blocks showed no significant differences ( $p > 0.05$ ) between the plots allocated to treatments Salt and No-salt. Average sward height and herbage mass were 28.6 cm (SE ± 0.41) and 87.9 g/m<sup>2</sup> (SE ± 4.8), respectively. Compared with the Control plots, using salt blocks to attract ponies resulted in an 18-fold increase in the number of heather seedlings and a 9% reduction in the percentage cover of *Molinia*.

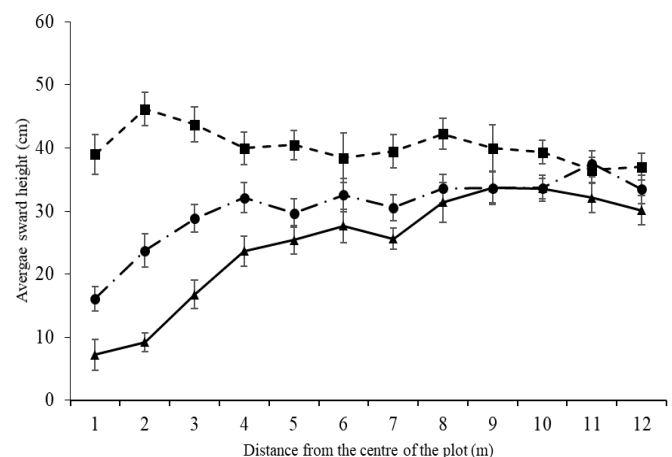
Data collected in July 2019 showed significant differences between treatments. Treatment had a significant effect on sward height ( $F_{(2, 933)} = 73.71$ ,  $p < 0.001$ ). Post-hoc pair wise comparisons of

treatments showed significant differences ( $p < 0.001$ ) in mean sward height between all treatments (Figure 2). Analyses showed a significant positive relationship between sward height and increasing distance from the central marker posts on Salt ( $r_s = 0.495$ ,  $p < 0.001$ ) and No-salt ( $r_s = 0.392$ ,  $p < 0.001$ ) plots; the impact of pony activity being greatest nearest to the marker posts.

Average cover of *Molinia* differed significantly ( $H_{(2, 621)} = 67.16$ ,  $p < 0.001$ ) between Salt, No-salt and Control plots, 83%, 88% and 92%, respectively, differences between pairs were all significant at  $p < 0.001$ . A weak significant positive correlation in % cover of *Molinia* occurred with distance from the centre of plots ( $r_s = 0.213$ ,  $p < 0.001$ ). The average height of *Molinia* tussocks was significantly different ( $F_{(2, 879)} = 25.89$ ,  $p < 0.001$ ) between Salt (13.9 cm) and Control (17.5 cm) plots ( $p < 0.001$ ), and No-salt (14.3 cm) and Control plots ( $p < 0.001$ ) but no significant difference occurred between Salt and No-salt plots ( $p > 0.05$ ). However, treatment had no significant effect ( $p > 0.05$ ) on the number of *Molinia* tussocks (Salt plots  $\bar{x} = 11.8$ , No-salt plots  $\bar{x} = 11.9$ , Control plots  $\bar{x} = 12.8$ ).

Average occurrence of bare ground differed significantly ( $H_{(2, 621)} = 119$ ,  $p < 0.001$ ) between treatments. Significant differences occurred between Salt (7.8%), and Control (0.3%) plots ( $p < 0.001$ ), No-salt (5%) and Control plots ( $p < 0.001$ ), and Salt and No-salt plots ( $p < 0.05$ ). A significant weak negative correlation in % bare ground occurred with the distance from the centre of the Salt plots ( $r_s = -0.230$ ,  $p < 0.001$ ).

There were significant differences in the number of heather seedlings between treatments ( $H_{(2, 10)} = 7.91$ ,  $p \leq 0.01$ ); significantly more heather seedlings were recorded in the Salt 12.6 (SE ± 1.5) compared with the Control 0.67 (SE ± 0.4) plots ( $p < 0.05$ ). There were no significant differences ( $p > 0.05$ ) between pair wise comparisons of No-salt 5.2 (SE ± 2.6) and Control plots and Salt and No-salt plots (Figure 3). Figure 4 shows for the Salt plots, the greatest numbers of heather seedlings were

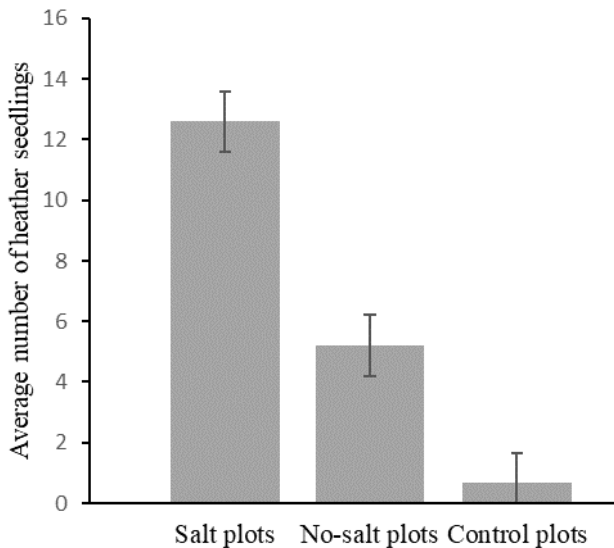


**Figure 2.** Changes in average sward surface height (cm) with increasing distance from the plot centre (1–12 m) in year 3 (2019): Salt, (▲,  $n = 30$ ), No-salt (●,  $n = 30$ ) and Control plots (■,  $n = 18$ ). Bars ± standard errors.

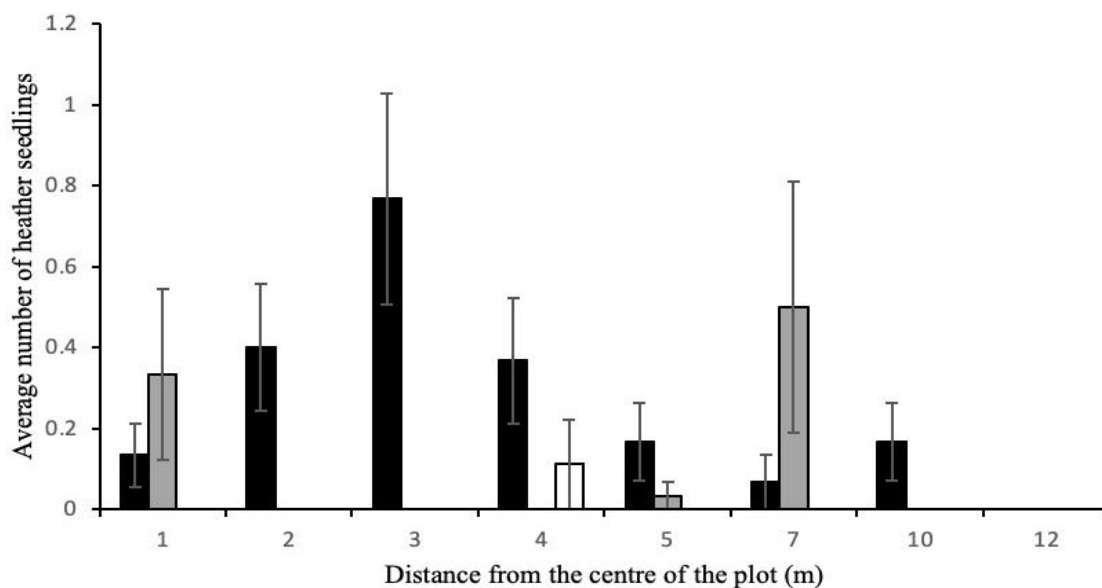
found at 2-4 m from the centre post. No seedlings were found at distance of 2-4 and 10 m in the No-salt plots. No seedlings were found at 1-3 and 5-10 m in the Control plots. No heather seedlings were found at a distance of 12 m in any plots.

There was a significant difference ( $t_{(8)} = 2.4$ ,  $p = 0.042$ ) in the condition of the mature heather plants on the Salt and No-salt plots, with 79% and 43% of plants, respectively, appearing to be in a healthy condition, with green leaves.

No quantitative measure was made of pony location. However, during regular site visits ponies were observed to be present and grazed for longer on the Salt plots (Figure 5).



**Figure 3.** Average total numbers of new heather seedlings found in Salt plots ( $n = 5$ ), No-salt plots ( $n = 5$ ) and Control plots ( $n = 3$ ), with standard error bars. Values show the totals in 48 ( $0.25 \text{ m}^2$ ) quadrats (8 distances along 6 radii) per sample plot, giving a total sampled area per plot of  $12 \text{ m}^2$ .



**Figure 4.** Average number of heather seedlings/quadrat ( $0.25 \text{ m}^2$ ) in Salt (■), No-salt (■) and Control plots (□), at distances of 1-12 m distant from the centre of the plots in year 3 (2019). Bars indicate standard errors. Salt plots ( $n = 30$ ), No-salt ( $n = 30$ ) and Control plots ( $n = 18$ ).

## DISCUSSION

The first aim of the experiment was to establish a suitable methodology for attracting ponies to graze selected *Molinia*-dominated areas. The findings from this study suggest that salt blocks can be used to attract Dartmoor ponies to graze selected areas without the need for fencing. The heft, the place where ponies habitually grazed, was altered by attracting them away to areas of ungrazed *Molinia*-dominated moorland.

The marking of the No-salt plots with wooden posts had unintended, but interesting consequences. It became apparent after the first summer season that the posts were attracting ponies to the No-salt plots. Ponies were observed moving between Salt and No-salt plots, foraging more or less continuously and occasionally rubbing on the marker posts. However, the ponies only congregated in numbers when they found a salt block. It appeared that, at a distance, they were unable to discriminate between Salt and No-salt plot marker posts. Nevertheless, by spending just a short time at the No-salt posts, they caused a change in vegetation structure and composition, albeit less than on the Salt plots. Compared with the Control plots, their investigative behaviour around posts on No-salt plots led to significant reductions in sward height and *Molinia* cover and increases in bare ground, as shown in Figure 5.

These findings suggest that where this methodology is used, it may be sufficient to move the salt blocks in rotation around a series of locations to provide moorland management at an ecologically meaningful scale. By installing several posts and frequently changing the position of the salt blocks, sufficient disturbance due to grazing and trampling by the ponies can be achieved and the damaging effects from severe disturbance avoided.

The second aim of the experiment was to determine if Dartmoor ponies could be used in

moorland conservation management to control *Molinia* and enable the regeneration of heather. Previous research has shown that to successfully establish heather in *Molinia*-dominated moorland requires firstly the reduction of *Molinia* cover and secondly the disturbance of the soil surface to create a seed bed (Milligan *et al.* 2004). In this study the provision of salt blocks led to a significant reduction in sward height (Figure 2), an increase in bare ground and a reduction in the % cover of *Molinia*, compared with No-salt and Control plots.

Heather seeds can accumulate in moorland soils - usually distributed more or less evenly within the top 5 cm of soil - and remain viable for many decades until exposed to light (Legg *et al.* 1992). Due to their small size and limited energy reserves, in undisturbed soils only those seeds close to the soil surface are likely to establish successfully (Mitchell *et al.* 2008). Dense tussocks of senescent *Molinia* create a cool, humid micro-environment, which supports dense communities of bryophytes within the inter-tussock spaces. As a consequence, heather seeds may be suppressed due to lack of light even between the tussocks of *Molinia*. Our results suggest that by reducing *Molinia* cover and disturbing the upper soil layers, our treatment may have allowed the germination of previously buried seeds.

In this study, increases in the germination and establishment of heather seedlings from the seed bank became apparent two summers after the introduction of salt blocks. The number of heather seedlings was fewer in pre-treatment plots in 2017, increasing to an average of 5.0 seedlings/treatment plot in 2018 and 12.6 seedlings/plot in 2019. The largest numbers of heather seedlings occurred 2-4 m from the salt blocks (Figure 4) where intermediate levels of grazing and trampling caused reductions in sward height and *Molinia* cover. Within 1 m of the salt blocks, levels of disturbance appeared to be excessive, resulting in loss of any developing seedlings.

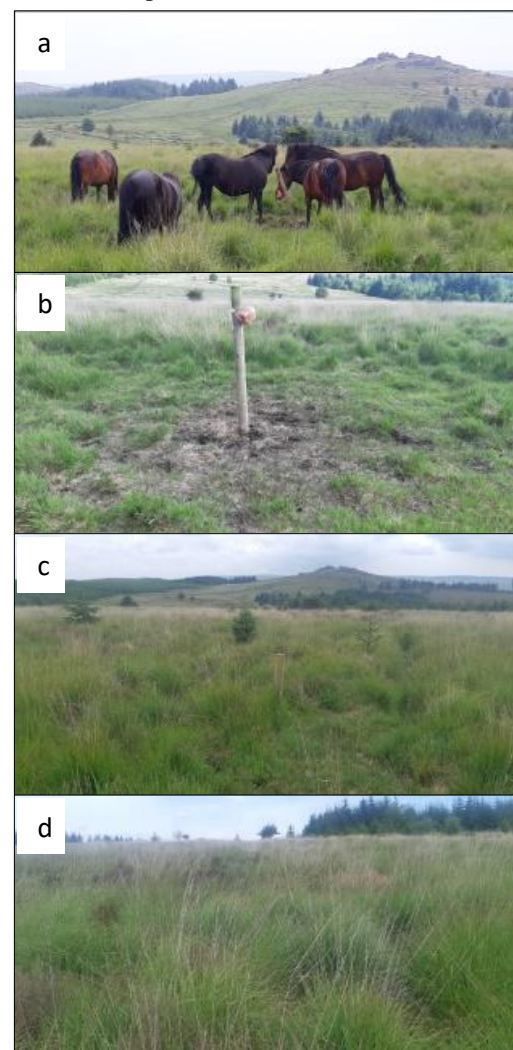
An existing seedbank is essential for re-establishment of heather. The population of mature heather and other dwarf shrub plants was sparse and senescing on the site but may have contributed to seed rain to augment the supply of seeds in the soil. In addition to creating the conditions suitable for germination, where there is no existing seed bank or seed rain, seeds would need to be added. There was also some evidence that grazing may have improved the condition of the mature heather plants within the Salt plots, with a lower percentage of plants judged as being in a poor condition in 2019, compared to the No-salt plots. Early indications suggest that grazing of the *Molinia* by the ponies has increased the rate of recovery of the heathland vegetation components of the SSSI.

Equines, unlike cattle and sheep, are hindgut fermenters, requiring continual intake of feedstuffs, and they have a high digesta passage rate and relatively high seed viability in their dung. In addition, the Dartmoor pony maintains good condition on moorland grasses and is adapted to

overwintering conditions in the uplands. These factors, combined with the disturbance created by their hoof fall, make this breed highly suitable for conservation grazing on moorland and upland heath.

This research provides evidence of the intrinsic value of Dartmoor or other native pony breeds in conservation-grazing schemes. The recommendations of this research are that native-pony grazing should be considered as a land management option for upland heath and moorland, where the conservation objectives are to reduce *Molinia* and re-establish heather. It is hoped that this research will assist Defra and Natural England in the planning of the UK Government's new Environmental Land Management scheme. However, support under that scheme should take into account that salt blocks on their own may not be enough to reduce *Molinia* sward height and dominance in the long term.

As of September 2019, no more salt blocks were placed on the Salt plots. In the future we will continue to monitor pony grazing in the experimental plots to see if there has been a permanent change in the hefting behaviour of the ponies and verify if the experiment produces a sustained improvement in heathland condition.



**Figure 5.** (a) ponies grazing near salt blocks, and their impact on (b) Salt, (c) No-salt and (d) Control plots.

## ACKNOWLEDGEMENTS

The authors wish to thank Dru Butterfield and Clare Stanton of the Dartmoor Pony Heritage Trust for overseeing the management of the ponies and providing financial support for the field researchers. The authors also acknowledge the work conducted by Rory Holness and Alex Bridel (University of Plymouth) in providing valuable baseline survey data.

## REFERENCES

- Aldezabal A., Mandaluniz N. & Laskurain N. (2013) Gorse (*Ulex* spp.) use by ponies in winter: Is the spatial pattern of browsing independent of the neighbouring vegetation? *Grass and Forage Science*, **68**, 49-58, doi.org/10.1111/j.1365-2494.2012.00865.x.
- Celaya R., Ferreira L., Garcia U., Garcia R. & Osoro K. (2011) Diet selection and performance of cattle and horses grazing in heathlands. *Animal*, **5**, 1467-1473. doi.org/10.1017/S1751731111000449
- Chambers F.M., Mauquoy D. & Todd P. (1999) Recent rise to dominance of *Molinia caerulea* in environmentally sensitive areas: new perspectives from paleoecological data. *Journal of Applied Ecology*, **36**, 719-733. doi.org/10.1046/j.1365-2664.1999.00435.x
- Critchley C.N., Mitchell R., Rose R., Griffiths B., Jackson E., Scott H. & Davies O. (2013) Re-establishment of *Calluna vulgaris* (L.) Hull in an eight-year grazing experiment on upland acid grassland. *Journal of Nature Conservation*, **21**, 22-30 doi.org/10.1016/j.jnc.2012.08.005.
- Dicks, L.V., Ashpole, J.E., Dänhardt, J., James, K., Jönsson, A., Randall, N., Showler, D.A., Smith, R.K., Turpie, S., Williams, D.R. & Sutherland, W.J. (2020) Farmland Conservation. Pages 283-321 in: W.J. Sutherland, L.V. Dicks, S.O. Petrovan & R.K. Smith (eds) *What Works in Conservation 2020*. Open Book Publishers, Cambridge, UK.
- Fraser M., Stanley C.R. & Hegarty M. (2019) Recognising the potential role of native ponies in conservation management. *Biological Conservation*, **235**, 112-118. doi.org/10.1016/j.biocon.2019.04.014
- JNCC (2008). UK Biodiversity Action Plan Priority habitat descriptions, upland heathland. <https://data.jncc.gov.uk/data/1be8bec3-0437-4758-adc8-ac866d4e0769/UKBAP-BAPHabitats-61-UplandHeathland.pdf>.
- Kaspari, M. (2020) The seventh macronutrient: how sodium shortfall ramifies through populations, food webs and ecosystems. *Ecology Letters*, **23**, 1153-1168. <https://doi.org/10.1111/ele.13517>.
- Legg C.J., Maltby E. & Proctor M.C.F. (1992) The ecology of severe moorland fire on the North York Moors: seed distribution and seedling establishment of *Calluna vulgaris*. *Journal of Ecology*, **80**, 737-752 doi.org/10.2307/2260863.
- López López, C., Celaya, R., Ferreira, L.M.M., García, U., Rodrigues, M.A.M. and Osoro, K. (2019). Comparative foraging behaviour and performance between cattle and horses grazing in heathlands with different proportions of improved pasture area. *Journal of Applied Animal Research*, **47**(1), 377-385 doi.org/10.1080/09712119.2019.1649679
- Murphy T.R., Hanley M.E., Ellis J.S. & Lunt P.H. (2019) Deviation between projected and observed precipitation trends greater with altitude. *Climate Research*, **79**, 77-89. doi.org/10.3354/cr01583
- Marrs R.H., Phillips J.D., Todd P.A., Ghorbani J. & Le Duc M. (2004) Control of *Molinia caerulea* on upland Moors. *Journal of Applied Ecology*, **41**, 398-411. doi.org/10.1111/j.0021-8901.2004.00901.x
- Milligan A., Putwain P., Cox E., Ghorbani J., Le Duc M. & Marrs R. (2004) Developing an integrated land management strategy for the restoration of moorland vegetation on *Molinia caerulea*-dominated vegetation for conservation purposes in upland Britain. *Biological Conservation*, **119**, 371-385 dx.doi.org/10.1016/j.biocon.2003.12.002.
- Mitchell R., Rose R. & Palmer S. (2008) Restoration of *Calluna vulgaris* on grass-dominated moorlands: The importance of disturbance, grazing and seeding. *Biological Conservation*, **141**, 2100-2111. dx.doi.org/10.1016/j.biocon.2008.06.006.
- Putman R.J., Pratt R.M., Ekins J.R. & Edwards P. (1987) Food and Feeding Behaviour of Cattle and Ponies in the New Forest, Hampshire. *Journal of Applied Ecology*. **24**, 369-380. 10.2307/2403881.
- Ross S., Adamson H. & Moon A. (2003) Evaluating management techniques for controlling *Molinia caerulea* and enhancing *Calluna vulgaris* on upland wet heathland in northern England. UK. *Agriculture, Ecosystems and Environment*, **97**, 39-49. dx.doi.org/10.1016/S0167-8809(03)00141-5.
- Sala O.E., Chapin F.S., Armesto J.J., Berlow E., Bloomfield J., Dirzo R., Huber-Sanwald E., Huenneke L.F., Jackson R.B., Kinzig A., Leemans R., Lodge D.M., Mooney H.A., Oesterheld M., Poff N.L., Sykes M.T., Walker B.H., Walker M. & Wall D.H. (2000) Global biodiversity scenarios for the year 2100. *Science*, **287**, 1770-1774. doi.org/10.1126/science.287.5459.1770.
- Yallop A.R., Thacker J.I., Thomas G., Stephens M., Clutterbuck B., Brewer T. & Sannier C.A.D. (2006) The extent and intensity of management burning in the English uplands. *Journal of Applied Ecology*, **43**, 1138-1148. doi.org/10.1111/j.1365-2664.2006.01222.x