

2020-06-17

Anthropocenes (Reworking the Wound), European Society for Literature, Science, and the Arts (SLSAeu), Katowice, Poland.

Emmett, Mathew

<http://hdl.handle.net/10026.1/16878>

All content in PEARL is protected by copyright law. Author manuscripts are made available in accordance with publisher policies. Please cite only the published version using the details provided on the item record or document. In the absence of an open licence (e.g. Creative Commons), permissions for further reuse of content should be sought from the publisher or author.

From Bodies Insufficiently Fresh

Anthropocenes (Reworking the Wound), European Society for Literature, Science, and the Arts (SLSAeu), Katowice, Poland.

Dr Mathew Emmett
www.mathewemmett.com

Architect and artist Mathew Emmett works with film, sound, installation and performance to disrupt the original use and perception of buildings. The works reveal multilayered references to the continual study of the Isenheim Altarpiece and the Apocalypse, addressing both destructive and redemptive themes in society today. Conceived as a neurological bridge, Emmett brings architecture and art together within an immersive nimbus, creating unstable zones within a host space. And by the insertion of a disturbance or splinter, his projects develop a new and latent tension previously absent within the site.



Isenheim Altarpiece (detail): Matthias Grünewald



From *Bodies Insufficiently Fresh*
www.mathewemmett.com



Isenheim Altarpiece (detail): Matthias Grünewald



Isenheim Altarpiece (detail): Matthias Grünewald





Isenheim Altarpiece (detail): Matthias Grünewald



From Bodies Insufficiently Fresh
www.mathewemmett.com



Isenheim Altarpiece (detail): Matthias Grünewald



From Bodies Insufficiently Fresh
www.mathewemmett.com



Isenheim Altarpiece (detail): Matthias Grünewald



Isenheim Altarpiece (detail): Matthias Grünewald



Isenheim Altarpiece (detail): Matthias Grünewald

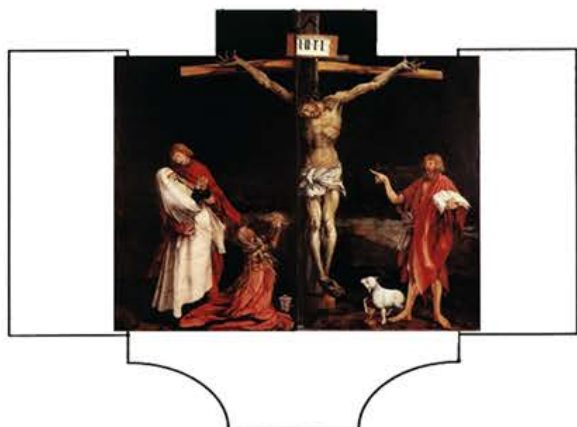


Isenheim Altarpiece (detail): Matthias Grünewald

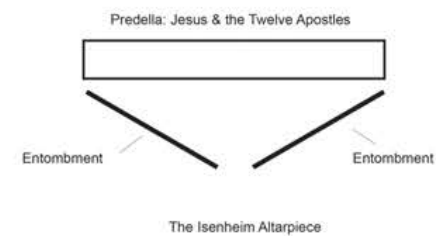
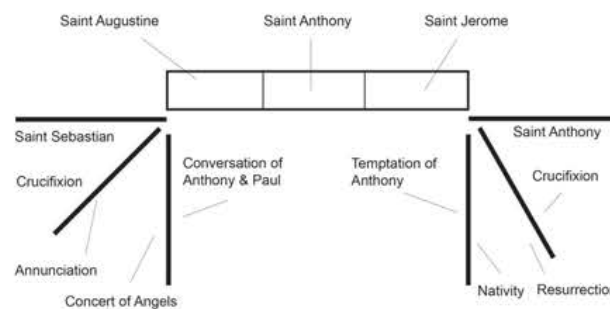


Isenheim Altarpiece (detail): Matthias Grünewald





Isenheim Altarpiece (detail): Matthias Grünewald



From *Bodies Insufficiently Fresh*
www.mathewemmett.com