

2017-01-15

Shipping noise in a dynamic sea: a case study of grey seals in the Celtic Sea

Chen, F

<http://hdl.handle.net/10026.1/16350>

10.1016/j.marpolbul.2016.09.054

Marine Pollution Bulletin

Elsevier BV

All content in PEARL is protected by copyright law. Author manuscripts are made available in accordance with publisher policies. Please cite only the published version using the details provided on the item record or document. In the absence of an open licence (e.g. Creative Commons), permissions for further reuse of content should be sought from the publisher or author.



Shipping noise in a dynamic sea: a case study of grey seals in the Celtic Sea



F. Chen ^{a,*}, G.I. Shapiro ^a, K.A. Bennett ^{a,b}, S.N. Ingram ^a, D. Thompson ^c, C. Vincent ^d, D.J.F. Russell ^c, C.B. Embling ^a

^a School of Marine Science and Engineering, Plymouth University, Drake Circus, Plymouth PL4 8AA, UK

^b School of Science, Engineering and Technology, Abertay University, Dundee, UK

^c Sea Mammal Research Unit, Scottish Oceans Institute, University of St Andrews, UK

^d Centre d'Etudes Biologiques de Chizé, CNRS/University of La Rochelle, 2 rue Olympe de Gouges, 17000 La Rochelle, France

ARTICLE INFO

Article history:

Received 13 June 2016

Received in revised form 21 September 2016

Accepted 22 September 2016

Available online 24 September 2016

Keywords:

Anthropogenic noise

Marine animals

Sound propagation

Acoustic modelling

Ocean fronts

ABSTRACT

Shipping noise is a threat to marine wildlife. Grey seals are benthic foragers, and thus experience acoustic noise throughout the water column, which makes them a good model species for a case study of the potential impacts of shipping noise. We used ship track data from the Celtic Sea, seal track data and a coupled ocean-acoustic modelling system to assess the noise exposure of grey seals along their tracks. It was found that the animals experience step changes in sound levels up to ~20 dB at a frequency of 125 Hz, and ~10 dB on average over 10–1000 Hz when they dive through the thermocline, particularly during summer. Our results showed large seasonal differences in the noise level experienced by the seals. These results reveal the actual noise exposure by the animals and could help in marine spatial planning.

Crown Copyright © 2016 Published by Elsevier Ltd. All rights reserved.

1. Introduction

Anthropogenic noise in the marine environment has increased significantly over the past five decades (McDonald et al., 2006). Growing evidence suggests that this increased noise is negatively impacting a range of species from crabs (Wale et al., 2013) to cetaceans (e.g. Rolland et al., 2012). Most research has concentrated on the acute impacts of loud impulsive sounds, such as pile driving, sonar and seismic air guns on acoustically sensitive species (e.g. Richardson et al., 1995). However, chronic, persistent noise, such as that from shipping, is becoming the focus of more recent research (e.g. Rolland et al., 2012; Simpson et al., 2016). Shipping noise has increased by 2.5–3 dB per decade over the last four decades (30–50 Hz; McDonald et al., 2006). This increase is particularly evident near major ports due to greater shipping density, usually concentrated in shallow shelf waters.

Noise from ships has the potential to mask the communication of acoustically active marine mammals (e.g. Williams et al., 2014) and result in changes in their behaviour such as (i) reducing the communication distance between the animals (e.g. grey seal (*Halichoerus grypus*): Bagocius, 2015), (ii) increasing the amplitude of vocalisations (e.g. right whales (*Eubalaena glacialis*): Parks et al., 2011) and (iii) reducing calling rates (e.g. beluga whales (*Delphinapterus leucas*): Lesage et al., 1999). The mitigation of shipping noise pollution is therefore integral to marine spatial planning in the shelf seas, where anthropogenic activities are rapidly increasing (Ellison et al., 2011). The International

Maritime Organisation (IMO) recently released guidelines for the reduction of underwater shipping noise (IMO, 2014 MEPC.1/Circ.833). Anthropogenic underwater noise has also recently been recognised as a form of pollution in European legislation through the Marine Strategy Framework Directive (MSFD descriptor 11: 2010/477/EU). Shipping noise is principally concentrated at low (<300 Hz) frequencies (Richardson et al., 1995). For low frequency noise policy requires monitoring of trends in the ambient noise level within the 1/3 octave bands of 63 and 125 Hz (centre frequency), which will be studied in this paper. With chronic persistent noise, a comprehensive approach is required since both the source (ship) and the receiver (mobile marine species) are moving through space and time, and this provides an additional challenge to assessing sound exposure.

Currently, there is insufficient observational data to support a thorough assessment of either ambient noise levels or their impacts on marine animal populations (UKMS, 2014), and there is an urgent need for detailed sound propagation predictions for complex noises and moving sources to generate and test hypotheses about their impacts on behaviour and energetics. Sound propagation modelling is an essential tool to assess the impact of shipping noise on marine mammals. The area affected by noise and the severity of the impacts depend on the frequency, duration and ability of the sound to propagate (Bailey et al., 2010). Key factors affecting sound propagation are the oceanographic and geomorphological characteristics of the surrounding region. Underwater acoustic signals do not propagate along a straight line, instead sound waves experience multiple reflections from the sea surface and seabed (Katsnelson et al., 2012). Furthermore, meso-scale features (e.g. fronts and eddies) and fine-scale characteristics (e.g. internal waves) can

* Corresponding author.

E-mail address: feng.chen@plymouth.ac.uk (F. Chen).

result in fluctuations of sound energy by up to ~20 dB (Lynch et al., 2006; Shapiro et al., 2014). Despite of their importance, these features are rarely incorporated into sound transmission models due to the lack of high resolution data on seawater parameters (e.g. temperature and salinity).

The Celtic Sea (see Fig. 1) provided the ideal location in which to investigate the use of oceanographically-referenced sound propagation models for assessing shipping noise exposure to marine animals. Shipping traffic in the Celtic Sea is heavy because it links the Atlantic with the UK coastal waters. The Celtic Sea is shallow with depths rarely exceeding 120 m. The sea is strongly stratified with a sharp thermocline from April to November and is mixed in winter, and a series of bottom fronts exist during the summer (Pingree, 1980). In addition, eddies with a typical diameter of 20–40 km also exist over the shelf-break region in late summer (Pingree, 1980).

Our previous study (Shapiro et al., 2014) showed the strong variability of sound propagation in the Celtic Sea due to strong seasonal variability in water column stratification. The transmission loss (hereafter TL) differs between summer and winter by as large as ~20 dB. In summer, when the source of sound is on the onshore side of the bottom front, sound energy is mostly concentrated in the near-bottom layer, resulting in step changes of TL in the water column up to ~20 dB. In winter sound from the same source is, however, distributed more evenly in the vertical. When the source is on the seaward side of the front, the sound level from a shallow source is nearly uniform in the vertical and the TL is significantly greater (~16 dB at 40 km distance) in summer than in winter. Such large seasonal differences in sound TL are, therefore, likely to result in significant seasonal changes in shipping noise exposure experienced by marine animals.

Assessing the effects of underwater noise on marine animals requires large databases that characterise animals' behaviour, movements and associated noise levels. Grey seals (*Halichoerus grypus*) are a highly tractable species which move over wide areas and feed predominantly at the benthos in shelf seas (McConnell et al., 1999; Thompson, 2012). This makes them a good choice for the reconstruction and assessment of received sound levels of animals. The movements of individuals and

underwater behaviour can be tracked in fine detail using GPS-GSM (Russell and McConnell, 2014) or satellite tags that record position and dive profiles, allowing dive by dive sound exposure to be calculated and potential behavioural or energetic consequences to be assessed. Unlike many cetaceans, grey seals do not critically depend on hearing to survive, but they are highly vocally active in air and in water with a substantial repertoire (Asselin et al., 1993). They use sound and vibrations in aggression, mating and in mother-pup bonding (Bishop et al., 2015) and the repertoire extends across a wide range of frequencies though most are typically <3 kHz. They can also use sounds passively in foraging scenarios (Stansbury et al., 2015). Pinnipeds have anatomical adaptations that mean they are well-adapted to hearing in water, and have hearing ranges from very low frequencies ~100 Hz (Kastak and Schusterman, 1998) to high frequencies ~30 kHz (Cunningham and Reichmuth, 2016). It is therefore likely that shipping noise is within the hearing range of grey seals.

The aim of this paper is to assess the shipping noise exposure experienced by grey seals along their tracks, and how this exposure varies seasonally. We used two grey seals and the Celtic Sea for this case study. However, we believe that the general outcomes of this research are applicable to other shelf seas and other animals, where both the source (ship) and receiver (marine animal) move in space and time. To achieve this we used a state-of-the-art ocean and acoustic propagation model (Shapiro et al., 2014) populated with GPS tracks and dive data from grey seals, and real-time AIS shipping data from winter and summer.

2. Materials and methods

2.1. Shipping data

The accurate modelling of shipping noise first requires detailed information on shipping in order to estimate the source levels (SL) of ships. The realistic operational information and ship properties were extracted from an Automatic Identification System (AIS) database through a web-based ship tracking database (<http://www.marinetraffic.com/>),

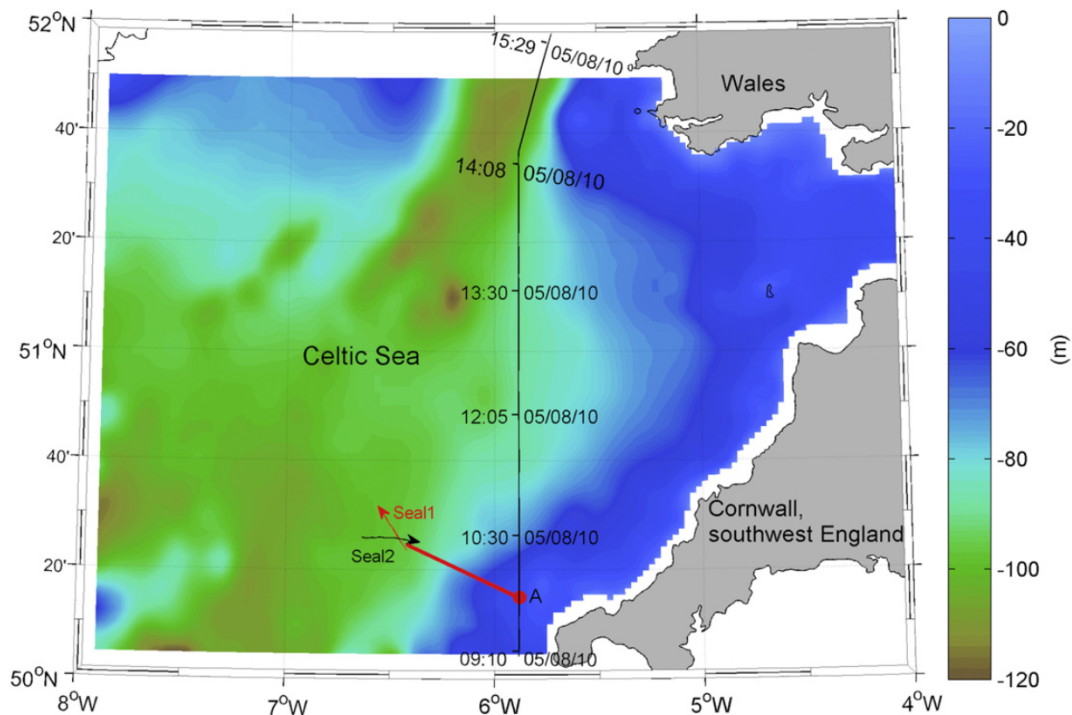


Fig. 1. Study area showing the bathymetry of the model domain. Transect A (thick red solid line) is used to calculate 2D transmission loss. Dot represents the location of the source. Solid line with time stamps express an example of shipping track from a commercial cargo ship (MMSI: 353633000). Arrows represent the horizontal tracks of two seals.

which are now widely used for shipping noise studies (e.g. Merchant et al., 2012; Erbe et al., 2012). Recorded vessel parameters, including vessel name, type, dimension, operational speed, location and time, are updated at most every 2 minutes. For a moving ship the operational speed and location were linearly interpolated to 1 s interval in time. An example of a real track of a commercial cargo ship (MMSI: 353633000) with length 155 m and average speed 15.5 knots in August 2010 is shown in Fig. 1, located in the heavily used shipping lane in the Celtic Sea.

The narrow band spectrum of the source level (SL) from a ship was calculated using the classic Ross (1976) power law model:

$$L_s(f, v, l) = L_{s0}(f) + 60 \log\left(\frac{v}{12}\right) + 20 \log\left(\frac{l}{300}\right) + df \times dl + 3.0 \quad (1)$$

where v is the ship's speed in knots and l is the ship's length in feet. L_{s0} is a reference spectrum defining an average ship as one with a speed of 12 knot and a length of 300 ft. df and dl are additional length correction which can be found from Breeding et al. (1996). This is an empirical model based on a large number of measurements, which is also used by worldwide noise models such as RANDI (Breeding et al., 1996). Given that the predominant bandwidth for shipping noise ranges from 10 Hz to 1000 Hz (although it does extend into the higher frequencies at least up to 40 kHz (Veirs et al., 2016)), the modelled narrow band spectrum from equation (1) was integrated into standard 1/3 octave central frequency spectrum between 10–1000 Hz, giving the representative source level (SL) of the ship noise in 1/3 octave band. Three ships were selected in this study: one was used to map sound exposure levels (which is defined as the received sound level integrated of the time of exposure, hereafter SEL, see Section 2.4.3 for details) in two seasons, and two ships were used to calculate received root-mean-square sound pressure levels (hereafter SPL) and SEL of Seal1 and Seal2 respectively (see details in Table 1). The source level spectrum, which was calculated using Eq. (1) is shown in Fig. 2. The sound spectrum showed a 'hump' at 10 to 100 Hz, and above 100 Hz sound levels decrease, which is a typical feature revealed in previous observations (e.g. Ross, 1976; McKenna et al., 2012). The peak of sound source level occurred at ~50 Hz and they are ~185 dB, ~183 dB and ~173 dB depending on the lengths and operational speeds of the ship.

2.2. Ocean-acoustic modelling system

A coupled ocean-acoustic modelling system, implemented in the Celtic Sea by Shapiro et al. (2014), was used to calculate TL of sound energy. This modelling system combines an oceanographic model (POLCOMS) with an acoustic propagation model (HARCAM). POLCOMS is a three-dimensional (3D) model that has been used successfully for modelling temperature and salinity in different regions of the world ocean and has been used operationally by the UK Met Office for the European Shelf seas (Bell, 2012). The main features of POLCOMS are available from Holt and James (2001), and are therefore not repeated here. The implementation and validation of POLCOMS in the Celtic Sea has been performed in previous studies (Shapiro, 2011; Chen et al., 2013), which demonstrated that the mean error of the model in predicting temperature over the whole 3D domain was approximately 0.72 °C

against observational data. The model was constructed with 2 km horizontal resolution and 30 vertical layers, which were used to provide high-resolution hourly temperature and salinity data for the acoustic propagation model.

HARCAM is an acoustic model which is used as a transmission loss engine of the Naval Tactical Decision Aid WADER system, a sonar range prediction and global ocean information system used operationally by the UK Royal Navy. The model has been validated by the U.K. Ministry of Defence (MOD) over a variety of frequencies (10 Hz–500 kHz) in both shallow and deep waters (Etter, 2001). The model has been also verified by comparison with other similar models (Etter, 2001) and UK MOD benchmark TL data. HARCAM calculates the acoustic signal TL and the level of sound exposure at a distance from a sound source. Unlike the simpler and range-independent models, that assume the oceanographic and sediment parameters are identical over the propagation range, the HARCAM model is able to take into account the spatial variability of environmental parameters. The setup of the model is similar to that of Shapiro et al. (2014), although the sediment data used in this study (see Table 2) covers a wider range of sediment types.

2.3. Seal tag data

We explored the tracks of adult and pup grey seals tagged in Wales (Ramsey Island, Pembrokeshire) in 10/2010–10/2011 and France (the Iroise Sea) in 08/2010–12/2012 to identify animals that spent some of their time in the region identified in Fig. 1 during a period when AIS data were also available. Grey seals were caught on or near haul outs and tags attached using the methods described previously (McConnell et al., 1999) under Home Office licence number 60/4009 and in accordance with the UK Animals (Scientific Procedures) Act 1986, and licence number 11/873/DEROG by the French Ministry of Environment. The telemetry devices were Sea Mammal Research Unit GPS-GSM phone tags. GPS-GSM phone tags provide GPS quality locations and only require the animal to surface for <1 s to obtain an accurate location fix, through use of the Fastloc system. Erroneous locations do occur and these were removed using the thresholds of a number of satellites and residual error (Russell and McConnell, 2014). Following these cleaning procedures 95% of locations have distance error of <50 m. Tags record whether the animal is wet or dry and contain a pressure sensor to record dive depth. The GSM-GPS phone tags used in this study record every dive and transmit almost all recorded dives, which results in up to 90 locations per day depending on the specific tags. Behaviour was recorded as a 'dive' when the sensor was wet and the pressure sensor recorded a depth below a 1.5 m threshold for 8 seconds. Dives ended when the sensor was dry, or when the pressure sensor recorded depth above 1.5 m. Location and behavioural information were stored on board in the tag until transmission. Data were transmitted by a quad band GSM mobile phone module when the animal came within range of a receiver.

One seal from each data set spent some of its time in the shipping lane area in summer and winter respectively and the relative positions between ships and seals are given in Fig. 1. Seal 1 corresponds to the summer condition while Seal 2 is for the winter. Two segments (arrows in Fig. 1) were extracted from the seal track data based on the time

Table 1
Summary of details of ships and seals.

		Name	Length (m)	Horizontal speed	Start time	End time
Summer	Ship	Auteuil (LPG tanker) (MMSI: 563483000)	93.0	12.2 knots	21/09/2011 02:02:28	21/09/2011 04:51:24
	Seal1	hg29-11-10	N/A	Mean: 1.368 m/s Std: 0.198	21/09/2011 02:02:28	21/09/2011 04:51:24
Winter	Ship	Oscar Wilde (Passenger ship) (MMSI: 308847000)	166.3	15.8 knots	19/12/2012 06:40:04	19/12/2012 09:49:00
	Seal2	B29	N/A	Mean: 1.459 m/s Std: 0.218	19/12/2012 06:40:04	19/12/2012 09:49:00

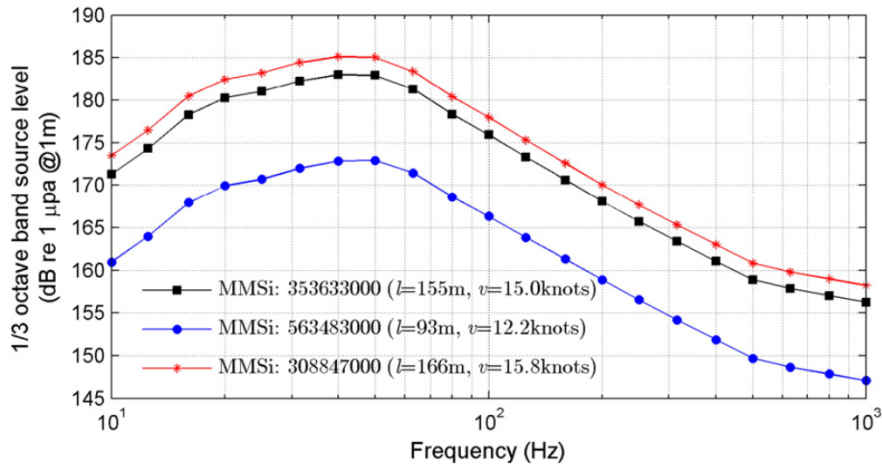


Fig. 2. Source level spectrum in 1/3 octave band radiated by three ships. MMSI: 353633000 (black square) was used to calculate sound exposure levels. MMSI: 563483000 (blue circle) and MMSI: 308847000 (red star) were used to calculate sound pressure levels received by Seal1 and Seal2 respectively. *l* is ship length and *v* is averaged operational speed.

when the ship started travelling northwards from the southernmost point of the shipping lane. The parameters of the seals were summarised in Table 1. As the location data were less frequently recorded than dive data, in order to obtain the location information for each dive the locations were interpolated between known GPS locations by assuming straight movements at a constant speed. Specifically, the horizontal speed of seals was first calculated based on the adjacent GPS location points for which latitude, longitude and recorded time were available. Subsequently the location data were linearly interpolated to an interval of 1 s. Dive parameters included total dive time, maximum depth of dive, and depths at nine even spaced time points. The depth data were also interpolated to 1 s interval. By doing so, the seal position was characterised by location data and vertical depth at an interval of 1 s. The sound exposure in 3D space experienced by the seals was calculated by linking the ocean-acoustic modelling system and seal track parameters, in which seals and ships were modelled as moving receivers and sources simultaneously.

2.4. Calculation of shipping noise parameters

2.4.1. Transmission loss over transect A

The common approach to calculating acoustic TL is to consider a two-dimensional (2D) problem (range and depth) assuming that the azimuthal dependence is small and the source is treated as an omnidirectional monochromatic point, a single point where source energy is concentrated and sound energy radiates spherically through all directions (Katsnelson et al., 2012). A transect (A in Fig. 1) that crosses the bottom temperature front was selected to perform the TL calculation

Table 2
Geoacoustic parameters for HARCAM.

Sediment type	Sound speed ratio	Density ratio	Attenuation of longitudinal waves (dB/m/kHz)
Clay ^a	0.994	1.421	0.2
Silt ^a	1.057	1.74	0.8
Muddy sand ^a	1.115	1.856	0.67
Sand ^d	1.145	1.941	0.52
Gravelly sand ^d	1.201	2.034	0.46
Sandy Gravel ^b	1.250	2.1	0.4
Chalk ^b	1.6	2.2	0.2
Limestone ^b	2.0	2.4	0.1

^a Hamilton (1980).
^b Jensen et al. (2011).

for summer and winter. The ship (MMSI: 353633000) travelled northwards through the shipping lane on 5th August and 5th December in 2010. These two days were thus chosen for transect A, giving the summer and winter conditions respectively. Transect A shows the sound propagation pattern in 2D space, in which sound energy propagates from the ship to the seals' location. Calculations were carried out for 125 Hz since it is one of two 1/3-octave bands (63 and 125 Hz) proposed to be monitored by MSFD and is believed to be within the hearing range of pinnipeds such as grey seals (Kastak and Schusterman, 1998; Cunningham et al., 2014).

2.4.2. Comparison to generic spreading models

Generic basic spreading models (e.g. Bailey et al., 2010; Erbe et al., 2012) are a simplified way to assess the TL for anthropogenic noise, which were sometimes used in bioacoustics studies. In this study we tested the difference between the more accurate HARCAM and basic spreading models to assess the level of errors introduced by the simplification of the TL process in basic models. The basic spreading models that were used for comparison are $TL(r) = N \log(r) + \alpha r$, where *N* is a factor for spreading loss, α is the absorption coefficient and *r* is the range. *N* is defined by 10, 20 and 15 (e.g. Bailey et al., 2010; Erbe et al., 2012), representing the cylindrical spreading, spherical spreading and intermediate empirical spreading respectively. The absorption coefficient α is estimated using the formulas from Francois and Garrison (1982).

2.4.3. Sound exposure level of ships

SEL is considered to be an exposure metric for non-pulse sound (such as shipping noise) because it considers the cumulative effect of sound energy over time (Southall et al., 2007). In order to simulate the spatial pattern of the noise field in 3D space, we calculated the multi-transect TL fields generated by a point source, with an azimuthal resolution of 2.5°.

Received levels (RL) of receivers were estimated using the sonar equation:

$$RL = SL - TL \tag{2}$$

where SL is the source level in dB re 1 µPa @ 1 m predicted from equation (1) and TL is calculated by HARCAM. The source depth (SD) for all calculations is deployed at 7 m, a typical depth of ship propellers (McKenna et al., 2012). Accordingly, the RL at 1/3 octave central frequencies can be obtained using this equation.

SEL is originally defined by,

$$SEL = 10 \log_{10} \left(\frac{\int Q(t) dt}{P_0^2} \right) \quad (3)$$

where $Q(t)$ is the received mean square pressure and P_0 is the reference pressure of $1 \mu\text{Pa}$. In order to calculate the SEL when a ship covers the entire shipping route across the Celtic Sea (as indicated by the solid line in Fig. 1), an approximate discretisation was adopted here by,

$$SEL = 10 \log_{10} \left(\frac{\sum R_i T_i}{P_0^2} \right) \quad (4)$$

Taking the spectrum of the SL into account, the received mean square pressure was calculated by,

$$R_i = \frac{\sum_1^N P_{RL}^2}{N} \quad (5)$$

where N is the number of central 1/3 octave band frequencies between 10 and 1000 Hz. P_{RL} is the individual received pressure derived from Eq. (2), where the RL in dB were converted into pressure. T_i is the duration in seconds between two time points sampled along the ship track.

2.4.4. Sound exposure of seals

Sound exposure levels received by seals were presented in SPL averaged over a frequency bandwidth of 10–1000 Hz, and cumulative SEL. SPL is also an appropriate metric for quantifying exposure to non-pulse sounds, and is defined as the root mean square pressure expressed in decibels (Southall et al., 2007). To determine the SPL of the seals along their travelling path, ship and seal were treated as a moving source-

receiver pair, between which TL was calculated at a time step of 1 s using the HARCAM model. At each time step the RLs in a 1/3 octave band were calculated using Eq. (2) and converted to pressures. The mean square pressure was then obtained by finding the mean of the pressures in 1/3 band and converted back to decibels. Cumulative SEL was calculated using equation 3.

3. Results

3.1. Transmission loss under different seasonal conditions

As shown in Fig. 3a and Fig. 3b, the water depth of transect A varied from ~30 m to ~90 m and the temperature pattern changed significantly between two seasons. In winter the water column was well mixed vertically with only slight variations of temperature (~0.3 °C) in the horizontal direction, while the intense thermocline and the associated bottom front were well developed in summer. The subsurface front was located at the range ~9 km from the source while the thermocline existed at a water depth of ~25 m (see Fig. 3a). The front spatially separated the water into an onshore mixed water and an offshore strong stratified area, leading to a temperature difference of ~3 °C across the front. However, the vertical contrast of temperature increased dramatically on the offshore side of the front, reaching as much as ~7 °C across the thermocline.

Fig. 3c and d illustrate the TL fields of transect A for summer and winter, in which distinctive features from different seasons can be seen. In winter, the TL reduced with range from the ship with a relatively low rate (see Fig. 3d). The sound energy was relatively evenly distributed vertically through the water column, giving a TL of ~75 dB at a range of 40 km. In summer, sound energy varied little vertically to around 8 km from the source (see Fig. 3c). However, beyond 8 km, most of the sound energy was directed down into the bottom water

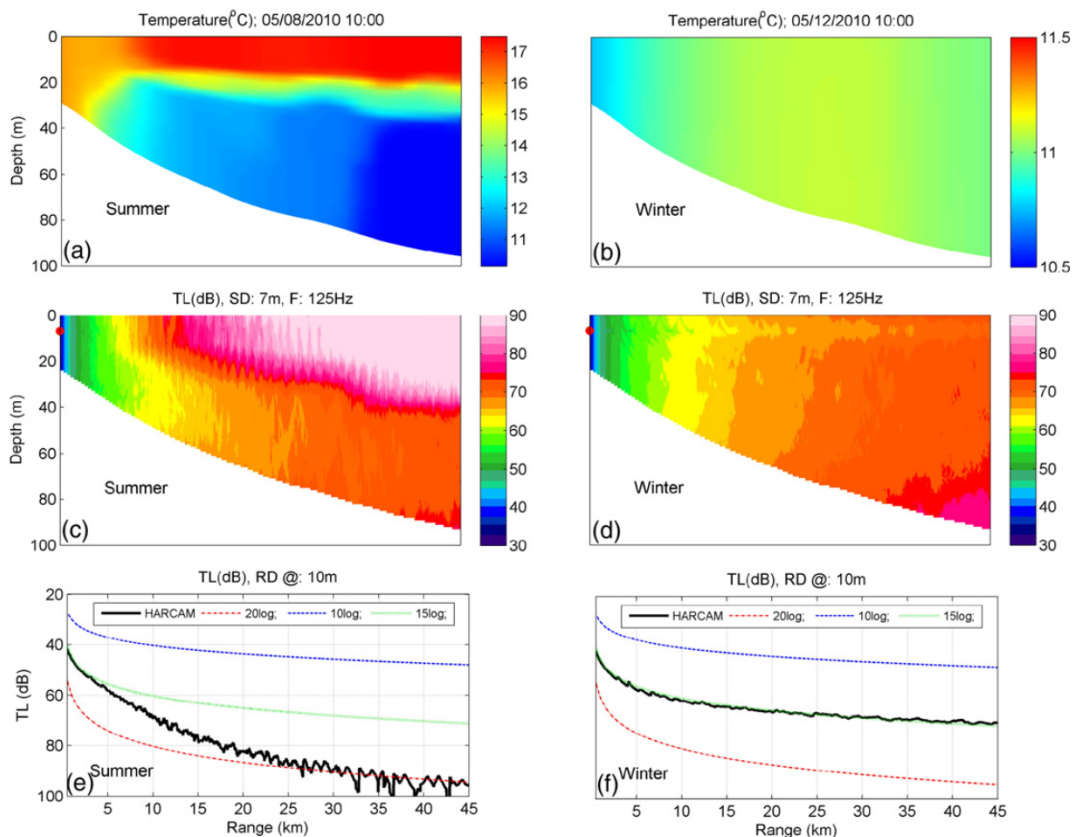


Fig. 3. Seasonal variations of parameters on transect A: (a) and (b): temperature; (c) and (d): transmission loss at frequency 125 Hz with source (7 m) located on the onshore side of the bottom front; (e) and (f): comparisons of transmission loss at a water depth of 10 m between HARCAM and spreading models (10log, 15log and 20log).

below the thermocline, and propagated more efficiently in this deeper water. This pattern of propagation is due to both the descending bathymetry, which reduces the grazing angles of the acoustic rays at the sediment interface, hence lower bottom loss, and to the strong sound speed gradient at the thermocline, which prevents the acoustic rays from penetrating the thermocline upwards. In the upper layer the acoustic energy decayed rapidly at the front (~9 km), showing a typical TL difference of ~20 dB between the upper and lower layers which was not present in winter. An upper quiet zone was thus formed in summer, with the boundary following the thermocline. This caused a strong vertical step change of the TL at the interface of the thermocline in summer, reaching as large as the seasonal difference ~20 dB. The propagation range was, therefore, significantly reduced in the upper layer during summer. The TL cut-off of 70 dB in the upper layer, for example, can propagate ~40 km in winter but only ~12 km in summer. Below the thermocline the broad pattern of the TL was, however, very similar in both seasons although small differences were predicted to exist locally.

3.2. Testing the difference in performance between two sound propagation models

Fig. 3e and Fig. 3f shows the comparison of TL of transect A at a water depth of 10 m between HARCAM and three generic spreading models in summer and winter. In summer the TL calculated by HARCAM was between the 20log and 15log models to the range ~23 km, subsequently

following the trend of the 15log model. The 20log overestimated the TL by ~4–8 dB at shorter range (<15 km). Large differences in TL (~10 dB to ~40 dB) were found between HARCAM and the 10log model, increasing over the travel distance of the sound. In contrast to the summer time, in winter the 15log matched with HARCAM very well in such vertically mixed water. However, TL from 10log was predicted to be lower than that of HARCAM by ~20 dB while TL calculated by the 20log model was higher by ~20 dB.

3.3. Sound exposure level for grey seals moving near the shipping lane

Fig. 4 shows the SEL for the ship (MMSi: 353633000) at two water depths (15 m and 50 m) for summer and winter. The highest SEL existed along the shipping lane and the surface layer was always louder than the bottom layer at various scales, depending on the latitude of the shipping lane. The spatial pattern of the SEL in summer was more complicated than that in winter due to complex water column conditions (such as stratification, fronts and eddies). A notable feature was that sound energy could propagate much further or has higher intensity at a defined location during winter.

The magnitude of the difference in SEL increased with distance from the shipping lane, reaching ~10 dB near the Bristol Channel for example. The propagation range was compressed dramatically in summer when the intense thermocline and bottom front developed, and the

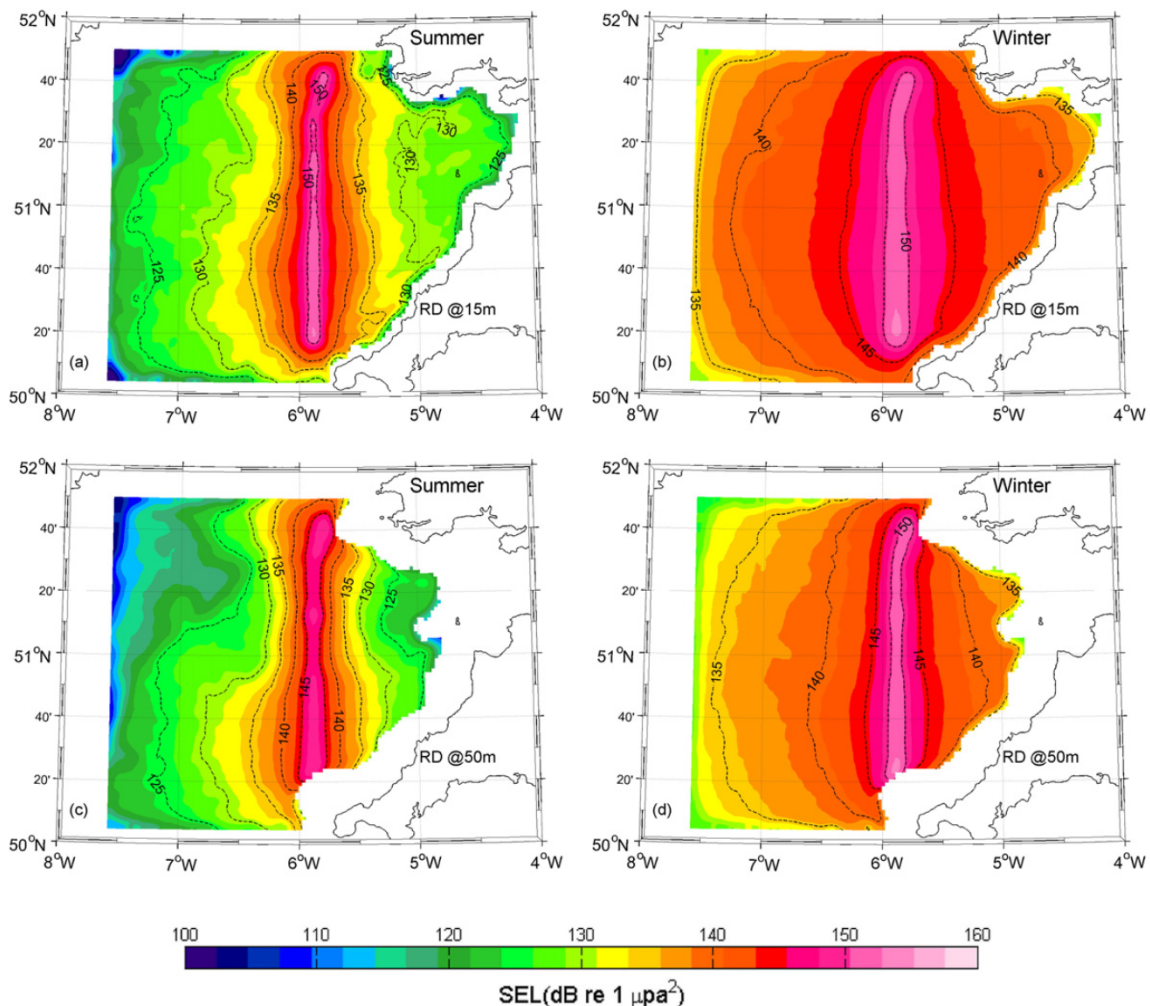


Fig. 4. Sound exposure level with the ship (MMSi: 353633000) travelling northwards over the shipping lane (see Fig. 1).

discrepancy for a specific threshold (e.g. 140 dB) was up to ~60 km shorter than that in winter.

3.4. Calculated sound level during diving in grey seals

Fig. 5a shows the relative distance between seal and ship against the travelling time of the seal while Fig. 5b illustrates the SPL (10–1000 Hz) at each diving depth for Seal1. 69 dives occurred within ~10,525 seconds and each dive was numbered as shown in Fig. 5b. The black arrow marked the time point when the ship crossed the bottom front from onshore to offshore. As seen in Fig. 5b, the sound levels perceived by Seal1 were predicted to be highly variable in time and with water depth. Sound intensity was always low (~65–75 dB) when the seal cruised near the sea surface (above 1.5 m water depth). This is due likely to scatterings of sound energy at the surface boundary. The SPL of many

diving profiles exhibited strong dependence on depth, showing frequent step changes in sound level. Taking the 6th dive for instance, the change of SPL was as large as ~15 dB when the seal dived from 20 m to 35 m, with higher sound intensity (~95 dB) in the bottom layer. This occurred during the case of downslope sound propagation in summer described in Fig. 3c in which a strong TL step change in the vertical direction occurred at the interface of the thermocline and sound energy was trapped mainly below the thermocline. From 0 to ~3100 seconds, when the ship was on the onshore side of the subsurface front, there were 21 dive profiles in total, including 20 shallower diving associated with relatively lower sound levels and closer distance to the ship, and 1 bottom dive, which was marked by number 6. In contrast, from ~3100 to 10,525 seconds when the ship was on the offshore side of the bottom front, sound level reduced as the relative distance between seal and ship increased and a strong step change in the sound

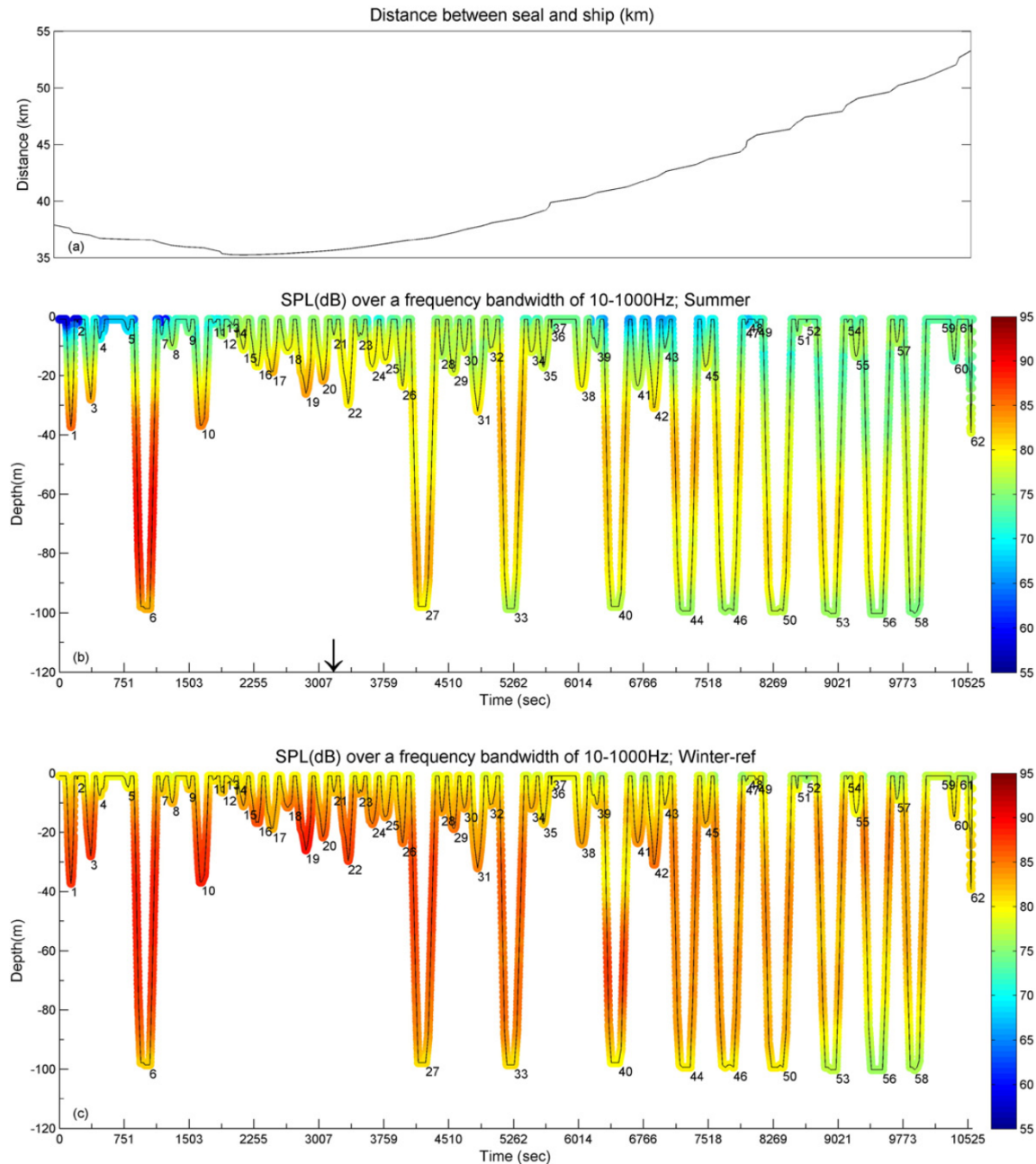


Fig. 5. Sound exposure for Seal1 (see Fig. 1) in summer. (a): relative distance between Seal1 and ship (MMSI: 563483000); (b): SPL (dB) over a frequency bandwidth of 10–1000 Hz for Seal1 over its diving path. The black arrow in the figure marks the time point when the ship crosses the bottom front from onshore to offshore while the numbers are indices of diving profiles; (c): same as (b) with the water column data replaced by winter temperature and salinity for noise calculation.

level, as observed in the 6th dive profile, disappeared. As a result, it was predicted that when the seal dived into the bottom layer the sound energy perceived by the seal can be lower by up to ~15 dB, e.g. by comparing dive profile 27 to 6. More frequent deeper dives associated with lower noise levels occurred down to the seabed from ~3100 to 10,525 s.

Fig. 5c was constructed in the same way as Fig. 5b, with the water column parameters being replaced by winter temperature and salinity for noise TL calculation. This allowed direct comparison of received sound levels between summer and winter. The overall seasonal difference in received sound levels was higher by approximately 10 dB in winter. An obvious feature can be seen that strong step changes of sound energy in water depth disappeared (e.g. diving profile 6). From 0 to 3100 seconds during which the ship was located on the onshore

side of the front and shallower diving occurred more frequently, the sound energy received by Seal1 above ~30 m in water depth was greater by ~15–20 dB than that of summer. Below 30 m the predicted sound level was, however, almost the same.

Fig. 6 shows the noise pattern for Seal2 in winter when the water column was well mixed. Overall, the received SPL over its diving path for Seal2 was higher by ~20 dB than that of Seal1 due primarily to the stronger source level for Seal2 (see Fig. 2) and different environmental parameters. At the top and bottom boundary layers where sound interacts, sound level was, as expected, to be lower (~10 dB for this case) than that of the intermediate water layer due to scattering and reflection. In contrast to Seal1, the sound level experienced by Seal2 exhibited weak variability in diving depth, among a range of different dive

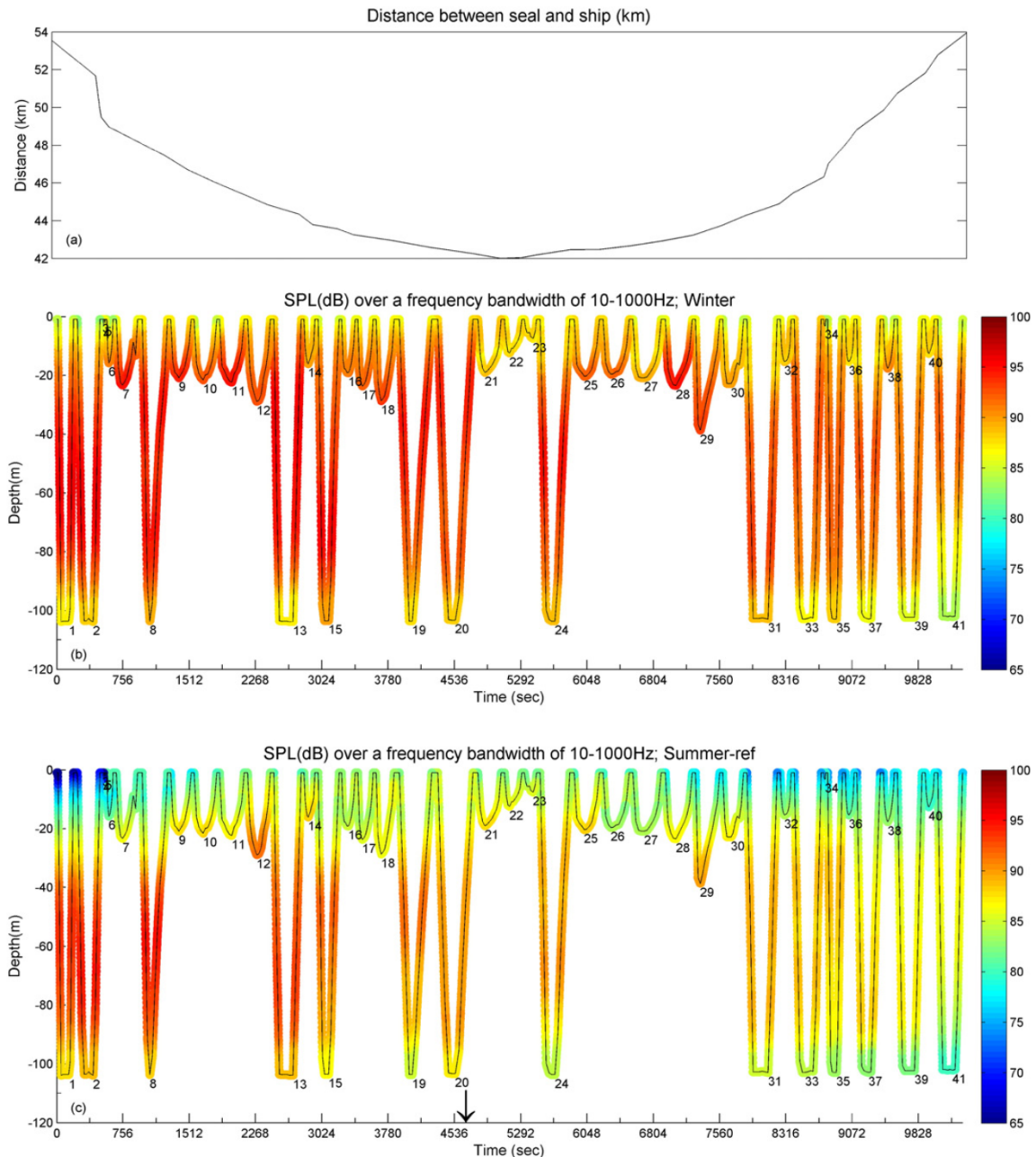


Fig. 6. Sound exposure for Seal2 (see Fig. 1) in winter. (a) Relative distance between Seal2 and ship (MMSI: 308847000); (b) SPL (dB) over a frequency bandwidth of 10–1000 Hz for Seal2 over its diving path; (c): same as (b) with the water column data replaced by summer temperature and salinity for noise calculation.

profiles. Seal2 started shallower diving when it approached the closest point (at ~4900 seconds) to the ship, and returned to bottom diving at ~7900 seconds when the ship was moving away.

Similar to Fig. 5, Fig. 6c shows the predicted noise level of Seal2 where summer temperature and salinity were used for TL calculation. When the ship was on the onshore side of the front many step changes in sound level were observed among bottom diving profiles. The magnitude of the step changes reduced with the decrease of the distance between Seal2 and the ship, e.g. from ~15 dB in profile 1 to ~3 dB in profile 19. After the ship crossed the front, strong step changes in sound level disappeared and the overall sound level was ~10 dB lower than that of winter.

The cumulative SEL for Seal1 and Seal2 is presented in Fig. 7, showing a nearly constant seasonal difference of ~5 dB for two seals. In summer a step change of SEL can be also observed when the seal travelled from 0 to ~3 km. The difference of realistic SEL between summer (red) and winter (blue) reached as much as a ~20 dB, due primarily to the difference in the source level and the changes of water column parameters.

4. Discussion

We have shown that in order to get a reasonable estimate of the shipping noise exposure experienced by marine animals, the acoustic model has to take into account the complex 3D structure of temperature and salinity fields in the ocean. The ocean-acoustic modelling system used in this study was able to assess the sound level exposure when the ships and animals were moving simultaneously. The results demonstrated that there was a strong seasonal difference in the sound level exposure due to the seasonal variation of ocean parameters. There was also a strong variability in the exposure level at different dive depths, in particular during summer.

4.1. Seasonal differences in sound propagation

Using the combined ocean-acoustic modelling system, populated with high resolution water column data, sediments, bathymetry and sea surface wind speed, we have shown a significant difference in noise propagation in summer and winter around an important shipping lane in the Celtic Sea. In winter the water was well mixed, and the TL was only weakly dependent on water depth: the variability in the level of TL was typically <5 dB (see Fig. 3d). By contrast, in the presence of a thermocline and bottom fronts (Fig. 3c), when the source was

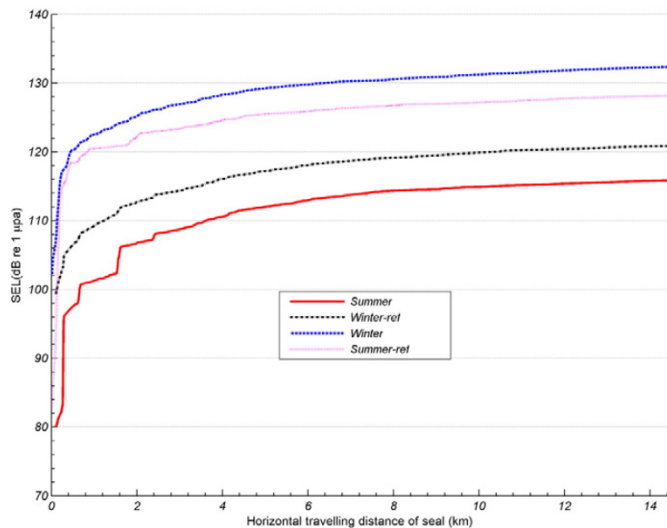


Fig. 7. Cumulative sound exposure levels for Seal1 and Seal2: Seal1 in summer (red solid line), Seal1 in winter (black dot-dash line), Seal2 in winter (blue dashed line) and Seal2 in summer (pink dotted line).

located on the onshore side of the bottom front, sound energy was trapped below the thermocline. As a result, a quiet area above the thermocline was formed and the TL difference at a frequency of 125 Hz could be as large as ~20 dB in the vertical water column, which is comparable to the study by Shapiro et al. (2014) in which the vertical TL discrepancies were ~15 dB at a frequency of 300 Hz and ~20 dB for 1000 Hz in the Celtic Sea. The mechanism that forms the non-uniform propagation pattern in summer has been discussed in detail by Shapiro et al. (2014).

The sound distribution mapped in this study demonstrated a strong variability in time and space (see Fig. 4). The combined effects of ship movements relative to the front and the sound propagation characteristics of the water affect the value of SEL. The effect of downwards refraction, which is caused mainly by stratification in the water column, dominated the sound distribution and led to a significant reduction of the propagation range in summer. As a result, the SEL is highly dependent on the formation of the seasonal stratification that develops in early summer and breaks down in the later autumn (Pingree, 1980). In contrast to the downwards refraction effect, the bottom front produces a more localised effect that is dependent on the relative position of the front and its source. For instance, in the south of the shipping lane where the bottom fronts existed, the propagation range of noise was increased by ~15 km, see Fig. 3c and Fig. 4c.

One of the monitoring schemes proposed by MSFD is to monitor trends in the ambient noise level within the 1/3 octave bands 63 and 125 Hz (MSFD-GES, 2012). In this study we have followed this scheme and clearly shown a strong influence of water column conditions on noise distribution, which would affect any receivers. It is therefore suggested that the seasonal variability of the water column should be taken into account in the documentation of noise trends.

4.2. Differences in sound propagation model performance

Our study showed that in order to achieve representative results on the noise exposure of marine mammals, acoustic models should not ignore variation in temperature and salinity within the water column, as was the case with some older basic bioacoustics studies (e.g. Richardson et al., 1995). Our comparison between HARCAM and basic spreading models has shown that the cylindrical spreading model (10log) failed to estimate the TL in such shallow water, because the difference between the two models was as large as ~20 to ~40 dB (Fig. 3e). The intermediate empirical spreading model (15log) underestimated the TL by up to ~20 dB, while the spherical spreading model (20log), which is generally used for deep waters (Jensen et al., 2011), overestimated the TL in the Celtic Sea with a maximum value of ~20 dB. Significant errors produced by the basic models were also evidenced by field measurements in coastal water undertaken by Pine et al. (2014), who demonstrated a disparity between the theoretical spherical spreading model and field measurements of up to 41 dB. Significant errors produced by the basic models were confirmed by Madsen et al. (2006), who used on-board acoustic recording tags. The above analysis suggests that the basic spreading models should not be used in dynamic shelf seas as they do not simulate the TL fields accurately.

4.3. Noise exposure of tracked seals

Zones of noise influence (Richardson et al., 1995) are spatial representations which classify noise distribution based on the estimated severity of injury. These zones are centred at the source, where animals are expected to receive the most severe injury, and decrease in severity with increasing distance from the source. The SEL characteristics calculated in this study suggest that the radius of these zones is strongly affected by season and water depth. We have also shown that the seasonal difference in sound propagation, and hence the size of the zone of influence, depends on the value of the threshold; the lower

the threshold value, the greater the seasonal difference. As seen in Fig. 4, the difference in the size of the area covered by the 150 dB contour line is relatively small between summer and winter, while the size of the area covered by the threshold of 140 dB is approximately 4–5 times greater. Such attenuation in sound suggests that the zones of audibility and behavioural response are more strongly influenced than injury zones, within which noise is strong enough to cause discomfort or tissue damage to animals.

Auditory masking, which is a reduction of the animals' ability to detect biologically important sounds in the presence of noise, might affect their communication, energy budget, behaviours and fitness, and hence their survival. Acoustical surveys in the Baltic Sea by Bagocius (2015) showed that local shipping noise had high masking potential for grey seal communication calls. In this study, the rups call type (in recorded grey seal vocalisations within 0.1–5 kHz range) was shown to have an average sound level of 71 dB at a centred frequency of 256 Hz, and maximum sound level of 103 dB. On average, the calculated SPLs in our study were ~60 dB to ~90 dB and ~85 to ~97 dB for Seal1 and Seal2, respectively, and therefore significantly overlap the vocalisation signals observed by Bagocius (2015). Ship noise thus has a potential to mask the auditory communication of grey seals, especially in winter. For example, Seal2 would have to raise its signal intensity to be audible to its conspecifics, which may have energetic consequences. Permanent hearing damage (PTS) to pinnipeds exposed to non-pulse sound such as shipping noise is predicted to occur when the peak SPL of noise is 218 dB and above, or the M-weighted SEL is 203 dB and above. The exposure criteria for temporary hearing damage (TTS) are 212 dB for SPL and 183 dB for SEL (Southall et al., 2007). However, the loudness of the sounds in our study did not reach levels at which either permanent or temporary damage would be expected to occur for seals (e.g. Hastie et al., 2015).

Cliff-based surveys have shown that seals are less likely to be sighted when vessel traffic is high (Anderwald et al., 2013). Our study had insufficient data to determine firmly whether seals showed behavioural avoidance of shipping within the available tracking data. Of all the seals tracked, very few used the area surrounding the shipping lane, so that finding a portion of track that overlapped in real time and space with that of a real ship was challenging. One possibility is that seals avoid this area altogether, possibly as a result of noise or other disturbance, or because the area is not a good foraging ground. Previous research overlaying VMS data and seal tracks in Ireland has shown a lack of overlap between seal habitat usage and fishing effort (Cronin et al., 2010), which reflects either the targeting of different areas by seals and fishermen, or active avoidance by seals. However, seal usage maps based on tracks from years in which AIS data were not available show high seal usage in the same region as the shipping lane (Thompson, 2012). Further work on the overlap between seal usage from telemetry data and shipping lanes would be informative, particularly in assessing potential winter versus summer differences in use which may be associated with sound.

Received sound at the deepest portion (>90% dive depth) of the dive may have the greatest impact on seals, since this is where they spend most time (40–45% of total dive time) on a dive-by-dive basis (Thompson, 2012). An analysis of cumulative time spent at depth in areas predicted to be noisy and quiet using our approach would be valuable in estimating any potential long term impacts.

The behaviour of seal pups in response to shipping noise is of particular interest because they are weaned abruptly on land and thus learn to forage without parental guidance (Bennett et al., 2010), and have higher mass specific metabolic costs than adults (Sparling and Fedak, 2004). The disruption of foraging behaviour may have energetic consequences for individuals, which, depending on the magnitude of the effect, could influence survival. Whether such reduced survival would have population consequences is dependent on the proportion of the population exposed and the predominant age class affected. Understanding the sound transmission of shipping noise in the Celtic Sea is therefore of additional

importance because the seal populations in Wales, Ireland, Cornwall and France are relatively small (e.g. Vincent et al., 2005; Leeney et al., 2010). Louder background noise in winter and prior to the development of a thermocline may be of biological consequence particularly for pups, which mostly enter the sea for the first time to learn to forage during winter and early spring in this population.

One interesting feature of the predicted received sound here is the step changes that seem to occur during the summer within and between dives. We have studied these effects caused by a single ship. The extent to which these step changes are masked or amplified by the inclusion of sound produced by multiple ships requires investigation. However, step changes during the rapid descent or ascent phase could deter animals from performing subsequent dives to below the depth at which the step change was experienced. The seal track avoiding a loud near-bottom area shown in Fig. 5b (see the time range between 751 and 3759 seconds) would support this hypothesis. We have insufficient data to confirm these hypotheses at present, but extension of our modelling approach to areas with greater telemetry data overlap would allow greater exploration of these possibilities. Our approach may allow us to examine whether seals avoid specific depths after sound exposure, and whether they show heading changes or alter dive characteristics in response to parameters including received sound, given time of year and activity and/or physiological state (Ellison et al., 2011). This requires the simultaneous modelling of sound produced by all ships in the region at any given time, ambient noise caused by waves and wind and the inclusion of data from multiple seals. Additional tagging efforts in South Wales or Northern Cornwall would help address the relative dearth of seal tracking data in the Celtic Sea.

Although the long-term or chronic effects from shipping noise on marine life are still largely unknown and have not yet been incorporated into management decisions (Ellison et al., 2011), there is increasing concern about the detrimental impacts in chronically exposed areas. For example, in a unique study, North Atlantic right whales (*Eubalaena glacialis*) appeared to have reduced faecal stress hormone (cortisol) levels after the reduction in shipping traffic following the events on 11th September 2001 (Rolland et al., 2012). This type of effect is difficult to assess under normal conditions, where shipping noise levels are constant and pervasive. Environmental conditions can lead to significant sound propagation anomalies, thus increasing the uncertainty surrounding the predictions of noise impacts. Including detailed environmental conditions in shipping noise management would aid our understanding of how the dynamic acoustic environment affects the noise field, and thus marine organisms. It would also enable the optimisation of noise mitigation strategies and the designation of MPAs. Coupled ocean-acoustic models similar to those used in this study are an effective and reliable method that can simulate the sound field over large areas and long periods of time. This facility is important for both biological applications and anthropogenic noise estimation, especially for continuous acoustic events in wide geographic areas (e.g. shipping noise), because direct measurement can be impractical and/or expensive. In addition, the long distance movements of seals (and other large, mobile predators), particularly the less predictable dispersal movements of pups (Bennett et al., 2010; Thompson, 2012), make a modelling approach to estimate sound exposure quite attractive. Even when viable animal-borne sound sensors have been developed, our approach will help compare the sound profiles of areas actually used by animals for different activities with less frequented areas. This will allow us to better evaluate the impacts of anthropogenic noise on habitat availability and quality, and to tease apart shipping noise from other sources of background noise.

5. Summary

We have selected the Celtic Sea and grey seals as a case study and shown how the seasonal variability in the hydrological structure of

the water column affects the exposure levels of grey seals to shipping noise. This effect is likely to influence any free-ranging highly mobile marine mammals in shelf seas. In summer the areas of high noise exposure by animals were situated below the thermocline when the ship was located on the onshore side of the oceanic front. These were areas located above the thermocline when the ship was on the offshore side of the front. The difference in the received sound level between the surface and near-bottom parts of the water column was as high as ~20 dB. Shipping noise propagated much further (by tens of kilometres) in winter than in summer. Furthermore, this study showed strong step changes of the sound perceived by seals during their descent and ascent through the water column. Since seals are bottom foragers, the step-change in shipping noise sound exposure may have negative impacts on their foraging behaviour. Although these results relate to a single ship, they show the value of including oceanographic features in sound transmission models and form the basis for more complex simulations of multiple ships. The approach established in this study can be applied to other species and other shelf seas, for instance, to generate biological and noise databases characterising the effects that shipping noise has on marine mammals. It is only through a more realistic understanding of the exposure of animals to ship noise, in which source and receiver are both moving, that we can set appropriate management and mitigation targets.

Acknowledgements

This study was supported by the EU (via PERSEUS grant FP7-OCEAN-2011-287600 and MyOcean SPA.2011.1.5-01 grant 283367). In addition, C.B. Embling was supported by the 2014 SoMSE Plymouth University Small (grant number 2014-SoMSE) research grant. D.J.F. Russell and D. Thompson were supported by the National Capability funding from the Natural Environment Research Council to the Sea Mammal Research Unit (grant no. SMRU1001). C. Vincent was supported by the Parc naturel marin d'Iroise and Région Poitou – Charentes (grant number 782423). The authors are also grateful to Ocean Acoustic Developments Ltd and personally to Mr. John J. Hodgson for provision of HARCAM software and advice for its best use, and to <http://www.marinetraffic.com/> for provision of ship AIS data.

References

- Anderwald, P., Brandecker, A., Coleman, M., Collins, C., Denniston, H., Haberlin, M.D., O'Donovan, M., Pinfield, R., Visser, F., Walshe, L., 2013. Displacement responses of a mysticete, an odontocete and a phocid seal to construction – related traffic. *Endanger. Species Res.* 21, 231–240.
- Asselin, S., Hammill, M.O., Barrette, C., 1993. Underwater vocalizations of ice breeding grey seals. *Can. J. Zool.* 71, 2211–2219.
- Bagocius, D., 2015. Potential masking of the Baltic grey seal vocalisations by underwater shipping noise in the Lithuanian area of the Baltic Sea. *Environ. Res. Eng. Manag.* 4 (70), 66–72.
- Bailey, H., Senior, B., Simmons, D., Rusin, J., Picken, G., Thompson, P.M., 2010. Assessing underwater noise levels during pile driving at an offshore windfarm and its potential effects on marine mammals. *Mar. Pollut. Bull.* 60, 888–897.
- Bell, M., 2012. Ocean forecasting – progress and plans. http://www.metoffice.gov.uk/media/pdf/f/d/MOSAC_17.7_MBell.pdf.
- Bennett, K.A., McConnell, B.J., Moss, S.E.W., Speakmand, J.R., Pomeroy, P.P., Fedak, M.A., 2010. Development of diving capabilities of grey seal pups: costs and benefits of the postweaning fast. *Physiol. Biochem. Zool.* 83, 911–923.
- Bishop, A., Denton, P., Pomeroy, P., Twiss, S., 2015. Good vibrations by the beach boys: magnitude of substrate vibrations is a reliable indicator of male grey seal size. *Anim. Behav.* 100, 74.
- Breeding, J.E., Pflug, L.A., Bradley, M., Walrod, M.H., McBride, W., 1996. Research Ambient Noise Directionality (RANDI) 3.1 Physical Description. Naval Research Laboratory, MS 39529 – 5004. NRL/FR/7176 – 95 – 9628.
- Chen, F., Shapiro, G., and Thain, R., 2013. Sensitivity of Sea Surface Temperature Simulation by an Ocean Model to the Resolution of the Meteorological Forcing, ISRN Oceanography, v. 2013: 215715, (12 pages). 10.5402/2013/215715
- Cronin, M., Jessopp, M., Reid, D., 2010. Seals and Fish Stocks in Irish Waters. Briefing Note to European Parliament Directorate General for Internal Policies. IP/B/PECH/IC/2010 – 115.
- Cunningham, K.A., Reichmuth, C., 2016. High – frequency hearing in seals and sea lions. *Hear. Res.* 331, 83–91.
- Cunningham, K.A., Southall, B.L., Reichmuth, C., 2014. Auditory sensitivity of seals and sea lions in complex listening scenarios. *J. Acoust. Soc. Am.* 136, 340.
- Ellison, W.T., Southall, B.L., Clark, C.W., Frankel, A.S., 2011. A new context – based approach to assess marine mammal behavioural responses to anthropogenic sounds. *Conserv. Pract. Policy* 26, 21–28.
- Erbe, C., MacGillivray, A., Williams, R., 2012. Mapping cumulative noise from shipping to inform marine spatial planning. *J. Acoust. Soc. Am.* 132 (5), EL423–EL428.
- Etter, P.C., 2001. Recent advances in underwater acoustic modelling and simulation. *J. Sound Vib.* 240 (2), 351–383.
- Francois, R.E., Garrison, G.R., 1982. Sound absorption based on ocean measurements: part 1: pure water and magnesium sulfate contributions. *J. Acoust. Soc. Am.* 72 (3), 896–907.
- Hamilton, E.L., 1980. Geoacoustic modelling of sea floor. *J. Acoust. Soc. Am.* 68, 1313.
- Hastie, G.D., Russell, D.J.F., McConnell, B., Moss, S., Thompson, D., Janik, V.M., 2015. Sound exposure in harbour seals during the installation of an offshore wind farm: predictions of auditory damage. *J. Appl. Ecol.* 52, 631–640.
- Holt, J.T., James, I.D., 2001. An s coordinate density evolving model of the northwest European continental shelf. 1. Model description and density structure. *J. Geophys. Res.* 106, 14015–14034.
- IMO, 2014. MEPC.1/Circ.833: guidelines for the reduction of underwater noise from commercial shipping to address adverse impacts on marine life. (Available at) <http://cetsound.noaa.gov/Assets/cetsound/documents/MEPC.1-Circ%20883%20Noise%20Guidelines%20April%202014.pdf>.
- Jensen, F.H., Kuperman, W.A., Porter, M.B., Schmidt, H., 2011. *Computational Ocean Acoustics*. Springer (812p).
- Kastak, D., Schusterman, R.J., 1998. Low – frequency amphibious hearing in pinnipeds: methods, measurements, noise, and ecology. *J. Acoust. Soc. Am.* 103, 2216–2228.
- Katsnelson, B., Petnikov, V., Lynch, J., 2012. *Fundamentals of Shallow Water Acoustics*. Springer (540p).
- Leeney, R.H., Broderick, A.C., Mills, C., Sayer, S., Witt, M.J., Godley, B.J., 2010. Abundance, distribution and haul – out behaviour of grey seals (*Halichoerus grypus*) in Cornwall and the Isles of Scilly. *J. Mar. Biol. Assoc. UK* 90, 1033–1040.
- Lesage, V., C. Barrette, M. C. S. Kingsley and B. L. Sjare. 1999. The effect of vessel noise on the vocal behavior of belugas in the St. Lawrence River estuary, Canada. *Mar. Mamm. Sci.* 15: 65–84.
- Lynch, J.F., Colosi, J.A., Gawarkiewicz, G.G., Duda, T.F., Pierce, A.D., Badley, M., Katsnelson, B.G., Miller, J.E., Siegmund, W., Chiu, C.S., Newhall, A., 2006. Consideration of fine – scale coastal oceanography and 3 – D acoustics effects for the ESME sound exposure model. *IEEE J. Ocean. Eng.* 31 (1), 33–48.
- Madsen, P.T., Johnson, M., Miller, P.J.O., Soto, N.A., Lynch, J., Tyack, P., 2006. Quantitative measures of air – gun pulses recorded on sperm whales (*Physeter macrocephalus*) using acoustic tags during controlled exposure experiments. *J. Acoust. Soc. Am.* 120 (4), 2366–2379.
- McConnell, B.J., Fedak, M.A., Lovell, P., Hammond, P.S., 1999. Movement and foraging areas of grey seals in the North Sea. *J. Appl. Ecol.* 36, 573–590.
- McDonald, M.A., Hildebrand, J.A., Wiggins, S.M., 2006. Increases in deep ocean ambient noise in the northeast pacific west of san Nicolas Island, California. *J. Acoust. Soc. Am.* 120 (2), 711–718.
- McKenna, M.F., Ross, D., Wiggins, S.M., Hildebrand, J.A., 2012. Underwater radiated noise from modern commercial ships. *J. Acoust. Soc. Am.* 131 (1), 92–103.
- Merchant, N.D., Witt, M.J., Blondel, P., Godley, B.J., Smith, G.H., 2012. Assessing sound exposure from shipping in coastal waters using a single hydrophone and automatic identification system (AIS) data. *Mar. Pollut. Bull.* 64 (7), 1320–1329.
- MSFD, d. 2010/477/EU: Commission Decision of 1 September 2010 on criteria and methodological standards on good environmental status of marine waters (notified under document C(2010) 5956) Text with EEA relevance(Available at) [http://eur-lex.europa.eu/legal-content/EN/TXT/?uri=CELEX:32010D0477\(01\)/](http://eur-lex.europa.eu/legal-content/EN/TXT/?uri=CELEX:32010D0477(01)/) (Accessed 2/2/2016).
- MSFD-GES, 2012. European Marine Strategy Framework Directive – Good Environmental Status (MSFD GES): Report of the Technical Subgroup on Underwater noise and other forms of energy. http://ec.europa.eu/environment/marine/pdf/MSFD_reportTSG_Noise.pdf.
- Parks, S.E., Johnson, M., Nowacek, D., Tyack, P.L., 2011. Individual right whales call louder in increased environmental noise. *Biol. Lett.* 7 (1), 33–35.
- Pine, M.K., Jeffs, A.G., Radford, C.A., 2014. The cumulative effect on sound levels from multiple underwater anthropogenic sound sources in shallow coastal waters. *J. Appl. Ecol.* 51, 23–30. <http://dx.doi.org/10.1111/1365-2664.12196>.
- Pingree, R.D., 1980. Physical oceanography of the Celtic Sea and English Channel. In: Banner, F.T., Collins, W.B., Massie, K.S. (Eds.), *The North–West European Shelf Seas: The Sea Bed and the Sea in Motion II Physical and Chemical Oceanography and Physical Resources*. Elsevier, Amsterdam, Oxford, NY, pp. 415–465.
- Richardson, J., Greene, C., Malme, C., Thomson, D., 1995. *Marine Mammals and Noise*. Academic Press, 525 B Street, San Diego, California 92101-4495 USA 0-12-588440-0.
- Rolland, R.M., Parks, S.E., Hunt, K.E., Castellote, M., Corkeron, P.J., Nowacek, D.P., Wasser, S.K., Kraus, S.D., 2012. Evidence that ship noise increases stress in right whales. *Proc. R. Soc. B Biol. Sci.* 279 (1737), 2363–2368.
- Ross, D., 1976. *Mechanics of Underwater Noise* (Pergamon, New York). pp. 272–287.
- Russell, D.J.F., McConnell, B.T., 2014. Report to DECC – seal at-sea distribution, movements and behaviour. (Available at) https://www.gov.uk/government/uploads/system/uploads/attachment_data/file/346304/OESEA2_SMRU_Seal_distribution_and_behaviour.pdf.
- Shapiro, G., 2011. Effect of tidal stream power generation on the region – wide circulation in a shallow sea. *Ocean Sci.* 7, 165–174.
- Shapiro, G., Chen, F., Thain, R., 2014. The effect of ocean fronts on acoustic wave propagation in the Celtic Sea. *J. Mar. Syst.* 139, 217–226.

- Simpson, S.D., Radford, A.N., Holles, S., Ferarri, M.C.O., Chivers, D.P., McCormick, M.I., Meekan, M.G., 2016. Small-boat noise impacts natural settlement behavior of coral reef fish larvae. *Adv. Exp. Med. Biol.* 875, 1041–1048.
- Southall, B.L., Bowles, A.E., Ellison, W.T., Finneran, J.J., Gentry, R.L., Greene, J., Charles, R., Kastak, D., Ketten, D.R., Miller, J.H., Nachtigall, P.E., Richardson, W.J., Thomas, J.A., Tyack, P.L., 2007. Marine mammal noise exposure criteria: Initial scientific recommendations. *Aquat. Mamm.* 33 (4), 411–521.
- Sparling, C.E., Fedak, M.A., 2004. Metabolic rates of captive grey seals during voluntary diving. *J. Exp. Biol.* 207, 1615–1624.
- Stansbury, A., Gotz, T., Deecke, V.B., Janik, V.M., 2015. Grey seals use anthropogenic signals from acoustic tags to locate fish: evidence from a simulated foraging task. *Proc. R. Soc. Lond. B* 282, 20141595.
- Thompson, D., 2012. Assessment of Risk to Marine Mammals from Underwater Renewable Devices in Welsh Waters. Phase 2 - Studies of Marine Mammals in Welsh High Tidal Waters on behalf of the Welsh Assembly Government. Annex 1 Movements and Diving Behaviour of Juvenile Grey Seals in Areas of High Tidal Energy. Doc Ref JER3688 R 120712 HT Annex 1 Movements and Diving Behaviour of Grey Seals.
- UKMS, 2014. Marine strategy part two: UK Marine monitoring programmes. (Available at) https://www.gov.uk/government/uploads/system/uploads/attachment_data/file/341146/msfd-part-2-final.pdf.
- Veirs, S., Veirs, V., Wood, J.D., 2016. Ship noise extends to frequencies used for echolocation by endangered killer whales. *PeerJ* 4, e1657.
- Vincent, C., Fedak, M.A., McConnell, B.J., Meynier, L., Saint-Jean, C., Ridoux, V., 2005. Status and conservation of the grey seal, *Halichoerus grypus*, in France. *Biol. Conserv.* 126 (1), 62–73.
- Wale, M.A., Simpson, S.D., Radford, A.N., 2013. Noise negatively affects foraging and anti-predator behaviour in shore crabs. *Anim. Behav.* 86, 111–118.
- Williams, R., Clark, C.W., Ponirakis, D., Ashe, E., 2014. Acoustic quality of critical habitats for three threatened whale populations. *Anim. Conserv.* (<http://dx.doi.org/10.1111/acv.12076>).