

2020-11

Spatially clustered resources increase male aggregation and mating duration in *Drosophila melanogaster*

Churchill, ER

<http://hdl.handle.net/10026.1/16332>

10.1016/j.anbehav.2020.09.002

Animal Behaviour

Elsevier Masson

All content in PEARL is protected by copyright law. Author manuscripts are made available in accordance with publisher policies. Please cite only the published version using the details provided on the item record or document. In the absence of an open licence (e.g. Creative Commons), permissions for further reuse of content should be sought from the publisher or author.

1 Spatially clustered resources increase male aggregation
2 and mating duration in *Drosophila melanogaster*

3

4 ABSTRACT

5 In environments where females mate multiply, males should adjust their behaviour and
6 physiology in response to the perceived level of sperm competition in order to
7 maximise their fitness. Evidence of such plasticity has been found in a number of
8 laboratory and field studies, but little is yet known about the cues stimulating these
9 responses in natural populations. One way in which males appear to assess sperm
10 competition risk is through encounter rates with conspecific males. Such encounter
11 rates may be driven by the spatial distribution of resources required by males (i.e. food
12 patches or potential mates), which in turn affects local density. However, explicit links
13 between resource distribution, male encounter rate, and shifts in behaviour related to
14 sperm competition have not been demonstrated. We show that when group size of *D.*
15 *melanogaster* males is held constant, a small decrease in the distance between
16 patches of food resources has striking effects on male behaviour. First, males on
17 clustered resources have a significantly reduced inter-male distance (and hence
18 encounter rate) compared to those on dispersed resources, and second, males from
19 clustered resources show an increase in subsequent non-competitive copulation
20 duration – previously shown to be a reliable indicator of male perception of sperm
21 competition risk – of more than two minutes (13%) compared to those from dispersed
22 resources. The aggregation of resources, operating via increased encounter rate, can
23 stimulate shifts in behaviour affecting male sperm competition performance. Given that
24 the spatial distribution of resources, is typically variable in natural populations (and
25 often unpredictable), selection is likely to favour the evolution of plasticity in sexual
26 behaviour where resource aggregation increases the probability of sperm competition.

- 27 Keywords
- 28 Copulation duration, evolution, mating behaviour, plasticity, resource distribution,
- 29 sexual conflict, sexual selection, sperm competition

Introduction

Variation in population density affects the rate at which individuals encounter conspecific competitors and potential mates, with consequences for the strength of sexual selection. One source of variation in local population density is the spatial distribution of critical resources. Clumped resources lead to increased encounter rates with competitors and mates as they gather to access those resources (Emlen & Oring, 1977). Where encounter rate is high, investment in traits such as sperm production, courtship, mating duration should be upregulated to maximise reproductive success in a dense social environment (Kokko & Rankin, 2006). Several empirical studies have supported this prediction, including in crickets (Gage & Barnard, 1996), beetles (McCullough, Buzatto, & Simmons, 2018), bugs (García-González & Gomendio, 2004), platyhelminths (Giannakara, Schärer, & Ramm, 2016), fish (Candolin & Reynolds, 2002), and rodents (Firman, Garcia-Gonzalez, Simmons, & André, 2018; Ramm & Stockley, 2009).

Demonstrating that male encounter rate can stimulate plasticity in sexual traits has generally been achieved by housing males at varying densities in the laboratory, with the most common treatment comparing a singly-housed male with a male housed with one or more conspecifics (Candolin & Reynolds, 2002; Firman et al., 2018; Gage & Barnard, 1996; Lizé et al., 2012; Moatt, Dytham, & Thom, 2013). This extreme manipulation of the total number of potential rivals is not intended to mimic the effects males experience in nature, but rather to demonstrate that such adaptive responses exist. Evidence for how such responses link to more ecologically-realistic stimuli is therefore lacking, although effects of sperm competition have been observed in natural populations – for example in lizards (Kustra, Kahrl, Reedy, Warner, & Cox, 2019) and frogs (Buzatto, Roberts, & Simmons, 2015). Given that patchiness in food resources

is common in nature, and that resource distribution affects the degree of male-male competition (Emlen & Oring, 1977), small-scale variation in resource distribution that leads to local variation in encounter rate should drive plastic variation in the allocation of resources by males to sexual behaviour described above.

Laboratory studies have repeatedly demonstrated that *Drosophila melanogaster* (*Drosophilidae* *Diptera*) males are highly sensitive to the presence of other males, and that they increase their investment in sperm quality and ejaculate size (Garbaczewska, Billeter, & Levine, 2013; Hopkins et al., 2019; Moatt, Dytham, & Thom, 2014), investment in ejaculate composition (Fedorka, Winterhalter, & Ware, 2011; Hopkins et al., 2019; Wigby et al., 2009), and lengthen copulation durations (Bretman, Fricke, & Chapman, 2009) when they perceive an elevated risk of sperm competition. Because *D. melanogaster* feed and breed on fermenting fruit (Begon, 1982), they rely on an inherently patchy resource with individual fruits naturally varying in size and proximity. Sex ratio and local population density of natural populations can vary considerably as a result (Markow, 1988; Soto-Yéber, Soto-Ortiz, Godoy, & Godoy-Herrera, 2018). Such patchiness in natural food resources seems an ideal candidate for the type of ecological variability that might stimulate adjustment in post-copulatory processes in the wild.

In this study, we test whether sperm competition-linked responses respond to resource patchiness by exposing male *D. melanogaster* to three different food distributions (clustered, dispersed and a uniform coverage control). In this way we can manipulate local density in an ecologically-realistic way, but without manipulating the number of rivals as previous laboratory studies have done (Bretman et al., 2009; Fedorka et al., 2011; Garbaczewska et al., 2013; Hopkins et al., 2019; Moatt et al., 2014; Wigby et al., 2009). We use the duration of copulation as a proxy for males' perception of sperm

competition risk, an association that has been demonstrated repeatedly in the laboratory (Bretman et al., 2009; Bretman, Fricke, Hetherington, Stone, & Chapman, 2010; Bretman, Westmancoat James, Gage Matthew, & Chapman, 2012; Bretman, Westmancoat, & Chapman, 2013; Mazzi, Kesäniemi, Hoikkala, & Klappert, 2009; Moatt et al., 2013). We predict that: (a) by experimentally manipulating the distribution of food resources, males on clustered resources have a higher mean proximity to rivals (i.e. a higher encounter rate on average), and (b) males on clustered resources will subsequently mate for longer on average, indicating an adaptive response based on perception of increased sperm competition risk.

Methods

All fly rearing and experiments were conducted in a 12 hour light:dark cycle (0800 – 2000 GMT), at 25 °C. *Drosophila melanogaster* used were from a laboratory population (Canton-S), and populations were cultured on 7 ml of a standard agar-based medium of 40 g of yeast per litre, in 40 ml vials. Between 20 and 30 *Drosophila* were housed in each vial. To minimise any effects of inbreeding, drift, and selective sweeps, every seven days the adults from all vials were pooled and randomly redistributed among new vials to start the next generation.

Test flies (180 in total – 60 per treatment) were collected from parent vials, each established with six males and six females allowed to breed for 70-98 h. Test flies were removed from parent vials within six hours of eclosion to ensure virginity; prior to this individuals are not sexually mature (Strömnæs & Kvelland, 1962). Flies were immediately aspirated under light ice anaesthesia into treatments. Virgin female flies for mating assays were collected from the same parental vials and aspirated into new vials in groups of four. Females were used in mating assays when they were seven days (+ 6-8 hours) old (Churchill, Dytham, & Thom, 2019).

Manipulating resource distributions and patchiness

Each replicate for each treatment consisted of four virgin males maintained in a 90 mm Petri dish for three days. Food in each of these 45 dishes was arranged in one of three treatments ($N = 15$): clustered, dispersed or uniform food resource distributions. Clustered and dispersed treatments both contained four plugs (420 mm³ per patch) of standard food medium (as described above). The size of these patches is within the range of patch sizes where territorial behaviours have previously been observed (Hoffmann & Cacoyianni, 1990).

Dispersed food discs were placed at four equidistant points around the circumference of the Petri dish; these were 50 mm apart along the edge of the square, 70 mm apart on the diagonal (illustrated in Fig. 2). Clustered discs were placed in the centre of the Petri dish, in a square arrangement with each food disc in direct contact with adjacent discs. The uniform treatment was an even layer of 45 ml standard medium covering the bottom of the dish (to the same height as the four food patches in the previous two treatments): volume and surface area were both greater in the uniform than the two patchy treatments, but given the number of flies food was assumed to be available *ad libitum* in all. All treatments were maintained in 12L:12D at 25 °C, and the four male flies per treatment remained in these conditions for 70 hours (+/- 1 h) until aged to three days.

Quantifying male spacing behaviour

Treatment enclosures were placed in one of two identical incubators maintained at 25 °C and on the same 12:12 L:D cycle as the stock flies. Each incubator was fitted with a Raspberry Pi (www.raspberrypi.org) connected to an 8MP Raspberry Pi Camera module (v2; www.thepihut.com). Two to three Petri dishes, placed in a balanced arrangement across all treatment combinations, were placed directly under each camera. We used frame capture software ('raspistill') to collect one image every 15 minutes from 0800-2000 GMT (during the light part of the cycle). We captured the x-y coordinates of each male at each time point using ImageJ's multiple point selector tool (Schneider, Rasband, & Eliceiri, 2012), and then converted these into a set of six Euclidean pairwise distances between the four males (24670 measurements across the three treatments and all time points). For 325 out of the 4290 individual time-point photographs (7.6%) we were unable to accurately locate at least one male on the

image. To minimize the effect of missing data on the number of time points included per replicate, the unit of analysis was the mean (rather than the raw data) of the distances between each pair for each time point.

Reproductive behavioural assays

After 70 h in treatment, each male from each Petri dish was allowed one opportunity to mate with a virgin female and mating behaviours were observed ($N = 15$; 60 individuals). The male and female were aspirated into a standard food vial supplemented with ~0.03 g active yeast granules. The space in the vial was limited to 7cm³ by pushing the vial bung down into the vial to reduce encounter latency.

Courtship latency was defined as the time from which the pair were first introduced until the male initiated his first wing extension. Latency to copulate (courtship duration) started at the time of the first wing extension, and ended with a male's successful mounting attempt. Copulation duration was recorded from successful mounting until the pair were fully separated.

Not every male courted (uniform: 81.8%; clustered: 86.4%; dispersed: 95.6%), and not all courting males mated (uniform: 75.0%; clustered: 86.8%; dispersed: 83.3%). We observed each pair for a maximum of 90 minutes after the pair had been introduced, and recorded failure to court and/or failure to mate after this time.

Statistical analysis

Sample sizes were 15 replicates ($N = 60$ *Drosophila*) for each of the three treatments, of which 11 from each treatment (33 in total) were photographed to collect spacing data. The effect of treatment on total inter-male distance was analysed using linear

mixed effects models, with plate included as a random effect in all models to account for the non-independence of the four males in a single treatment replicate. Time point (numbered sequentially from first to last measurement and treated as continuous) was modelled as a fixed effect.

Treatment effects on mating related traits were analysed using linear mixed effects models, with replicate plate entered as a random effect to account for the fact that mating data were available for (up to) four males per plate. Time point) and treatment were initially entered as interacting predictor variables; if the interaction was non-significant we re-ran the model with both variables entered as main effects. We used the R package lmerTest (Kuznetsova, Brockhoff, & Christensen, 2017) to generate p values using the Satterthwaite approximation for degrees of freedom. To assess the effect of treatment on binomial variables (courtship success, copulation success) we used generalised linear mixed models with a binomial error distribution, and replicate plate nested within treatment to account for possible plate effects.

Animal welfare note

Although *Drosophila* are not currently subject to any ethical restrictions in the United Kingdom, we took precautions to minimise injury and stress by controlling larval density during development, handling flies minimally and using only light ice anaesthesia, and by euthanizing flies at the end of the experiment while they were under anaesthesia.

Results

Effect of food distribution on inter-male spacing

The spatial distribution of food patches significantly influenced the mean pairwise distance between the four males in the treatment, and this interacted with the time course of exposure to treatment (treatment*time: $F_{2,4239} = 286$, $P = 2.20e^{-11}$; Fig. 1; Table 1). On the final day of treatment the time effect had stabilized (treatment*time $F_{2,525} = 1.134$, $P = 0.3224$), leaving a significant main effect of treatment on pairwise distance between males ($F_{2,30} = 32.268$, $P = 3.33e^{-8}$; interaction removed; Table 1). Post-hoc testing confirmed that on this final day, pairwise distances among males in the dispersed treatment (44.02 ± 0.66 mm SE) and the uniform treatment (39.35 ± 0.93 mm SE) were both significantly greater than among males in the clustered food treatment (22.79 ± 0.86 mm SE; dispersed vs clustered $F_{1,20} = 57.8$, $P = 2.53e^{-7}$; uniform vs clustered: $F_{1,20} = 27.9$, $P = 3.63e^{-5}$; time remained in these models as a main effect). There was no significant difference in mean pairwise distance between males in the uniform and dispersed treatments ($F_{1,20} = 3.9$, $P = 0.061$).

Effect of food distribution on mating behaviour

Among those males that mated, copulation duration was significantly affected by food distribution previously experienced by males ($F_{2,42.5} = 3.96$, $P = 0.026$; Fig. 2). Analysing the effect of treatment on the mean mating duration across all males in a replicate – a more conservative measure – confirmed a significant difference in mating durations between treatments ($F_{2,42} = 4.22$, $P = 0.021$). Males from the clustered treatment mated for significantly longer (1170 ± 28 s SE) than those from the dispersed treatment (1029 ± 28 s SE), a difference of 2 minutes 20 seconds ($F_{1,28} = 6.59$, $P = 0.016$). Copulation duration of males from the uniform treatment did not significantly

211 differ from either of the other treatments (uniform copulation duration 1107 ± 23 s SE;
212 vs. dispersed: $F_{1,28.5} = 2.22$, $P = 0.146$; vs. clustered $F_{1,28.5} = 1.96$, $P = 0.172$).
213 However, despite these observed differences between clustered and dispersed
214 treatments, the mean distance between males while in the treatment did not
215 significantly affect copulation duration in any of the three treatments (all $P > 0.101$).

216 In total, 159 of 180 males (88.3%) courted the female. There was no significant effect
217 of treatment on the proportion of males that courted (generalized linear model with
218 binomial errors and plate nested within treatment; $\chi^2 = 118$, $P = 0.376$). Similarly, 144
219 (80%) of males mated, and this was not influenced by treatment ($\chi^2 = 175$, $P = 0.286$).
220 Neither the latency to start courting ($F_{2,39.3} = 0.201$ $P = 0.818$) nor the latency to start
221 copulation ($F_{2,30.4} = 1.257$, $P = 0.299$), differed significantly among the three
222 treatments.

223

224 Discussion

225 The high degree of plasticity in mating-related traits in male *Drosophila* is well
226 established (Churchill et al., 2019; Davies, Schou, Kristensen, & Loeschcke, 2019;
227 Droney, 1998; Fricke, Bretman, & Chapman, 2008; Jensen, McClure, Priest, & Hunt,
228 2015; Lefranc, 2000; Lüpold, Manier, Ala-Honkola, Belote, & Pitnick, 2010; Morimoto
229 & Wigby, 2016; Ormerod et al., 2017; Schultzhaus, Nixon, Duran, & Carney, 2017).
230 Variation in these traits is highly sensitive to conspecific male density in a manner
231 which suggests that males adjust investment in anticipation of the intensity of sperm
232 competition they are likely to encounter during mating (Bretman et al., 2009). However,
233 how this level of plasticity relates to the variation in density and resource distributions
234 observed in natural populations remains unknown, and laboratory studies tend to
235 manipulate density in ways that seem unlikely to occur frequently in nature (e.g. singly-
236 housed males compared to a high density of males in a single vial).

237 We show that manipulating food patchiness while keeping group size constant has a
238 similar effect on a sperm competition-related trait – both in direction and magnitude –
239 as manipulating local density directly, and that these effects can be observed even
240 over very small spatial scales. Other studies on this species have found an
241 approximately two-minute increase in mating duration in high density males compared
242 to low density males (Bretman et al., 2009; Bretman et al., 2010; Bretman et al., 2013).
243 Given that wild *D. melanogaster* encounter a patchy resource that is likely to alter male
244 encounter rates at a similar scale to that demonstrated here (Markow, 1988; Soto-
245 Yéber et al., 2018), we suggest that fine-scale variation in these environmental cues
246 might influence male allocation of resources to traits associated with sperm
247 competition, and thus mating success, in wild-living *Drosophila*.

Although the effect on mating duration is a repeatable indicator of male perception of sperm competition risk, the benefits of this behaviour to males remains uncertain. In many species, increased mating duration has been linked to increased sperm transfer and offspring production (Edvardsson & Canal, 2006; Engqvist & Sauer, 2003; Sakaluk & Eggert, 1996). In *Drosophila* the consequences of longer copulation durations are less clear, with some studies reporting an association with increased fitness (Bretman et al., 2009; Garbaczewska et al., 2013; Price, Lizé, Marcello, & Bretman, 2012), while others have not found a link (Bretman et al., 2012; Dobler & Reinhardt, 2016). Whether males on the clustered food resource would have a higher fitness than those on dispersed resources remains to be tested, but will almost certainly depend on mating order effects and the competing male's history of exposure to rivals (Bretman et al., 2012). However, our objective here was not to examine fitness consequences, but rather to demonstrate that males alter their perceptions of likely sperm competition risk based on small-scale changes in the spatial distribution of resources.

Interestingly, the effect of food distribution on male distribution behaviour and sexual investment was observed in the absence of females. Females often follow social cues, and their grouping behaviour is promoted by aggregation pheromones (Bartelt, Schaner, & Jackson, 1985; Duménil et al., 2016). By comparison, given their low feeding rate once adult (Wong, Piper, Wertheim, & Partridge, 2009), males are thought to aggregate near food resources primarily to seek mating opportunities. That these groups of males responded in their individual positioning to the distribution of food even in the absence of females is intriguing, and leaves open the question of the relative importance of female social cues compared to the direct response of males to food resources. In general however, studies manipulating male density have tended

to exclude females from the treatment phase (e.g. Bretman et al. (2009); Bretman et al. (2010); Lizé et al. (2012); Moatt et al. (2013); Price et al. (2012); and Rouse and Bretman (2016)), meaning the effects of inter-sexual interactions on plastic responses to density is relatively unexplored.

This study adds to a small number of studies that demonstrate the effects of environmental heterogeneity on *Drosophila* behaviour. Yun, Chen, Singh, Agrawal, and Rundle (2017) demonstrated that female fitness was higher in more spatially complex laboratory environments as a result of a reduction in sexual interactions and consequent mitigation of male harm. Similar effects have been demonstrated when laboratory populations were presented with a refuge: female remating rates declined substantially (Byrne, Rice, & Rice, 2008). Such rapid shifts in behaviour, driven by ecological patchiness, have rarely been included in laboratory assays, but may have major effects on the demography and growth rate of populations exposed to spatial patchiness, through their effects on male reproductive skew and therefore effective population size. Such effects may have important evolutionary and ecological consequences in relatively patchy parts of a species' distribution, for example by increasing sexual conflict over shared resources (Pilakouta, Richardson, & Smiseth, 2016), or reducing maximum sustainable rates of evolution (Bridle, Kawata, & Butlin, 2019; Bridle, Polechová, & Vines, 2009).

There are some intriguing dynamics operating in the inter-male distances in the early stages of the treatment period: in particular, males on the dispersed food patches initially experience lower inter-male distances than those on the clustered food (Fig. 1). This effect does not match what we expected to see among males attempting to defend individual patches, and is the opposite to the pattern observed on the final days

of treatment. Inspection of photographs from this treatment suggests that males on the dispersed food patches initially cluster together away from food before sorting themselves into individual territories focussed around each patch. Territorial behaviour in *D. melanogaster* has previously been observed under laboratory conditions, and appears to be driven by boundaries of food sources (Lim, Eyjólfsson, Shin, Perona, & Anderson, 2014) so it is possible that multiple distinct territories could be established under these conditions. However, it remains unclear what is driving the initial clustering behaviour.

Our results demonstrate a clear link between small-scale patchiness of resources and sexual behaviours that suggest that males are sensitive to sperm competition risk, mediated by changes in male-male encounter rate. While density effects on male mating duration have been demonstrated several times, we have placed this response in a biologically meaningful context by demonstrating a link to ecological factors that are very likely to be at play in wild-living populations.

Acknowledgments

The authors wish to thank Felicity Thom for her help with this experiment, and Dr. Sarah Lane and all anonymous reviewers for their comments on previous versions of this manuscript. ERC was funded by a PhD studentship from the University of Plymouth.

318 Author contributions

319 ERC, MDFT, and JRB designed the study; ERC performed all experiments; ERC and

320 MDFT analysed the data; all authors contributed to writing the manuscript.

321 References

- 322 Bartelt, R. J., Schaner, A. M., & Jackson, L. L. (1985). cis-Vaccenyl acetate as an aggregation
323 pheromone in *Drosophila melanogaster*. *Journal of Chemical Ecology*, 11(12), 1747-
324 1756. doi:10.1007/BF01012124
- 325 Begon, M. (1982). Yeasts and *Drosophila*. *The genetics and biology of Drosophila*, 3, 3345-
326 3384.
- 327 Bretman, A., Fricke, C., & Chapman, T. (2009). Plastic responses of male *Drosophila*
328 *melanogaster* to the level of sperm competition increase male reproductive fitness.
329 *Proceedings of the Royal Society B: Biological Sciences*, 276(1662), 1705-1711.
330 doi:10.1098/rspb.2008.1878
- 331 Bretman, A., Fricke, C., Hetherington, P., Stone, R., & Chapman, T. (2010). Exposure to rivals
332 and plastic responses to sperm competition in *Drosophila melanogaster*. *Behavioral*
333 *Ecology*, 21(2), 317-321. doi:10.1093/beheco/arp189
- 334 Bretman, A., Westmancoat James, D., Gage Matthew, J. G., & Chapman, T. (2012). Individual
335 plastic responses by males to rivals reveal mismatches between behaviour and fitness
336 outcomes. *Proceedings of the Royal Society B: Biological Sciences*, 279(1739), 2868-
337 2876. doi:10.1098/rspb.2012.0235
- 338 Bretman, A., Westmancoat, J. D., & Chapman, T. (2013). Male control of mating duration
339 following exposure to rivals in fruitflies. *Journal of Insect Physiology*, 59(8), 824-827.
340 doi:10.1016/j.jinsphys.2013.05.011
- 341 Bridle, J. R., Kawata, M., & Butlin, R. K. (2019). Local adaptation stops where ecological
342 gradients steepen or are interrupted. *Evolutionary Applications*, 12(7), 1449-1462.
343 doi:10.1111/eva.12789
- 344 Bridle, J. R., Polechová, J., & Vines, T. (2009). Limits to adaptation and patterns of
345 biodiversity. In R. Butlin, J. Bridle, & D. Schutler (Eds.), *Speciation and Patterns of*

346 *Biodiversity*, (Ecological Reviews, pp. 77-101). Cambridge: Cambridge University
 347 Press. doi: 10.1017/CBO9780511815683.007

348 Buzatto, B. A., Roberts, J. D., & Simmons, L. W. (2015). Sperm competition and the evolution
 349 of precopulatory weapons: Increasing male density promotes sperm competition and
 350 reduces selection on arm strength in a chorusing frog. *Evolution*, 69(10), 2613-2624.
 351 doi:10.1111/evo.12766

352 Byrne, P. G., Rice, G. R., & Rice, W. R. (2008). Effect of a refuge from persistent male
 353 courtship in the *Drosophila* laboratory environment. *Integrative and Comparative*
 354 *Biology*, 48(2), e1-e1. doi:10.1093/icb/icn001

355 Candolin, U., & Reynolds, J. D. (2002). Adjustments of ejaculation rates in response to risk of
 356 sperm competition in a fish, the bitterling (*Rhodeus sericeus*). *Proceedings of the Royal*
 357 *Society B: Biological Sciences*, 269(1500), 1549-1553. doi:10.1098/rspb.2002.2055

358 Churchill, E. R., Dytham, C., & Thom, M. D. F. (2019). Differing effects of age and starvation
 359 on reproductive performance in *Drosophila melanogaster*. *Scientific Reports*, 9(1),
 360 2167. doi:10.1038/s41598-019-38843-w

361 Davies, L. R., Schou, M. F., Kristensen, T. N., & Loeschcke, V. (2019). Fluctuations in nutrient
 362 composition affect male reproductive output in *Drosophila melanogaster*. *Journal of*
 363 *Insect Physiology*, 118, 103940. doi:10.1016/j.jinsphys.2019.103940

364 Dobler, R., & Reinhardt, K. (2016). Heritability, evolvability, phenotypic plasticity and
 365 temporal variation in sperm-competition success of *Drosophila melanogaster*. *Journal*
 366 *of Evolutionary Biology*, 29(5), 929-941. doi:10.1111/jeb.12858

367 Droney, D. C. (1998). The influence of the nutritional content of the adult male diet on testis
 368 mass, body condition and courtship vigour in a Hawaiian *Drosophila*. *Functional*
 369 *Ecology*, 12, 920-928. doi:10.1046/j.1365-2435.1998.00266.x

370 Duménil, C., Woud, D., Pinto, F., Alkema, J. T., Jansen, I., Van Der Geest, A. M., . . . Billeter,
 371 J.-C. (2016). Pheromonal cues deposited by mated females convey social information
 372 about egg-laying sites in *Drosophila melanogaster*. *Journal of Chemical Ecology*,
 373 42(3), 259-269. doi:10.1007/s10886-016-0681-3

374 Edvardsson, M., & Canal, D. (2006). The effects of copulation duration in the bruchid beetle
 375 *Callosobruchus maculatus*. *Behavioral Ecology*, 17(3), 430-434.
 376 doi:10.1093/beheco/arj045

377 Emlen, S. T., & Oring, L. W. (1977). Ecology, sexual selection, and the evolution of mating
 378 systems. *Science*, 197(4300), 215. doi:10.1126/science.327542

379 Engqvist, L., & Sauer, K. P. (2003). Determinants of sperm transfer in the scorpionfly *Panorpa*
 380 *cognata*: Male variation, female condition and copulation duration. *Journal of*
 381 *Evolutionary Biology*, 16(6), 1196-1204. doi:10.1046/j.1420-9101.2003.00613.x

382 Fedorka, K. M., Winterhalter, W. E., & Ware, B. (2011). Perceived sperm competition intensity
 383 influences seminal fluid protein production prior to courtship and mating. *Evolution*,
 384 65(2), 584-590. doi:10.1111/j.1558-5646.2010.01141.x

385 Firman, R. C., Garcia-Gonzalez, F., Simmons, L. W., & André, G. I. (2018). A competitive
 386 environment influences sperm production, but not testes tissue composition, in house
 387 mice. *Journal of Evolutionary Biology*, 31(11), 1647-1654. doi:10.1111/jeb.13360

388 Fricke, C., Bretman, A., & Chapman, T. (2008). Adult male nutrition and reproductive success
 389 in *Drosophila melanogaster*. *Evolution*, 62(12), 3170-3177. doi:10.1111/j.1558-
 390 5646.2008.00515.x

391 Gage, A. R., & Barnard, C. J. (1996). Male crickets increase sperm number in relation to
 392 competition and female size. *Behavioral Ecology and Sociobiology*, 38(5), 349-353.
 393 doi:10.1007/s002650050251

394 Garbaczewska, M., Billeter, J.-C., & Levine, J. D. (2013). *Drosophila melanogaster* males
 395 increase the number of sperm in their ejaculate when perceiving rival males. *Journal of*
 396 *Insect Physiology*, 59(3), 306-310. doi:10.1016/j.jinsphys.2012.08.016
 397 García-González, F., & Gomendio, M. (2004). Adjustment of copula duration and ejaculate
 398 size according to the risk of sperm competition in the golden egg bug (*Phyllomorpha*
 399 *laciniata*). *Behavioral Ecology*, 15(1), 23-30. doi:10.1093/beheco/arg095
 400 Giannakara, A., Schärer, L., & Ramm, S. A. (2016). Sperm competition-induced plasticity in
 401 the speed of spermatogenesis. *BMC Evolutionary Biology*, 16(1), 60.
 402 doi:10.1186/s12862-016-0629-9
 403 Hoffmann, A. A., & Cacoyianni, Z. (1990). Territoriality in *Drosophila melanogaster* as a
 404 conditional strategy. *Animal Behaviour*, 40(3), 526-537. doi:10.1016/S0003-
 405 3472(05)80533-0
 406 Hopkins, B. R., Sepil, I., Thézénas, M.-L., Craig, J. F., Miller, T., Charles, P. D., . . . Wigby,
 407 S. (2019). Divergent allocation of sperm and the seminal proteome along a competition
 408 gradient in *Drosophila melanogaster*. *Proceedings of the National Academy of*
 409 *Sciences*, 201906149. doi:10.1073/pnas.1906149116
 410 Jensen, K., McClure, C., Priest, N. K., & Hunt, J. (2015). Sex-specific effects of protein and
 411 carbohydrate intake on reproduction but not lifespan in *Drosophila melanogaster*.
 412 *Aging cell*, 14(4), 605-615. doi:10.1111/accel.12333
 413 Kokko, H., & Rankin, D. J. (2006). Lonely hearts or sex in the city? Density-dependent effects
 414 in mating systems. *Philosophical Transactions of the Royal Society B: Biological*
 415 *Sciences*, 361(1466), 319-334. doi:10.1098/rstb.2005.1784
 416 Kustra, M. C., Kahrl, A. F., Reedy, A. M., Warner, D. A., & Cox, R. M. (2019). Sperm
 417 morphology and count vary with fine-scale changes in local density in a wild lizard
 418 population. *Oecologia*, 191(3), 555-564. doi:10.1007/s00442-019-04511-z

419 Kuznetsova, A., Brockhoff, P. B., & Christensen, R. H. B. (2017). lmerTest Package: Tests in
420 Linear Mixed Effects Models. *Journal of Statistical Software*, 1(13).
421 doi:10.18637/jss.v082.i13

422 Lefranc, A., Bongaard, J. (2000). The influence of male and female body size on copulation
423 duration and fecundity in *Drosophila melanogaster*. *Hereditas*, 132(3), 243-247.
424 doi:10.1111/j.1601-5223.2000.00243.x

425 Lim, R. S., Eyjólfsson, E., Shin, E., Perona, P., & Anderson, D. J. (2014). How food controls
426 aggression in *Drosophila*. *PLOS ONE*, 9(8), e105626.
427 doi:10.1371/journal.pone.0105626

428 Lizé, A., Price, T. A. R., Marcello, M., Smaller, E. A., Lewis, Z., & Hurst, G. D. D. (2012).
429 Males do not prolong copulation in response to competitor males in the polyandrous fly
430 *Drosophila bifasciata*. *Physiological Entomology*, 37(3), 227-232. doi:10.1111/j.1365-
431 3032.2012.00836.x

432 Lüpold, S., Manier, M. K., Ala-Honkola, O., Belote, J. M., & Pitnick, S. (2010). Male
433 *Drosophila melanogaster* adjust ejaculate size based on female mating status,
434 fecundity, and age. *Behavioral Ecology*, 22(1), 184-191. doi:10.1093/beheco/arq193

435 Markow, T. A. (1988). Reproductive behavior of *Drosophila melanogaster* and *D.*
436 *nigrospiracula* in the field and in the laboratory. *Journal of Comparative Psychology*,
437 102(2), 169-173. doi:10.1037/0735-7036.102.2.169

438 Mazzi, D., Kesäniemi, J., Hoikkala, A., & Klappert, K. (2009). Sexual conflict over the
439 duration of copulation in *Drosophila montana*: Why is longer better? *BMC*
440 *Evolutionary Biology*, 9(1), 132. doi:10.1186/1471-2148-9-132

441 McCullough, E. L., Buzatto, B. A., & Simmons, L. W. (2018). Population density mediates the
442 interaction between pre- and postmating sexual selection. *Evolution*, 72(4), 893-905.
443 doi:10.1111/evo.13455

444 Moatt, J. P., Dytham, C., & Thom, M. D. (2013). Exposure to sperm competition risk improves
 445 survival of virgin males. *Biology Letters*, 9(2), 20121188. doi:10.1098/rsbl.2012.1188

446 Moatt, J. P., Dytham, C., & Thom, M. D. (2014). Sperm production responds to perceived
 447 sperm competition risk in male *Drosophila melanogaster*. *Physiology & Behavior*, 131,
 448 111-114. doi:10.1016/j.physbeh.2014.04.027

449 Morimoto, J., & Wigby, S. (2016). Differential effects of male nutrient balance on pre- and
 450 post-copulatory traits, and consequences for female reproduction in *Drosophila*
 451 *melanogaster*. *Scientific Reports*, 6, 27673. doi:10.1038/srep27673

452 Ormerod, K. G., LePine, O. K., Abbineni, P. S., Bridgeman, J. M., Coorsen, J. R., Mercier,
 453 A. J., & Tattersall, G. J. (2017). *Drosophila* development, physiology, behavior, and
 454 lifespan are influenced by altered dietary composition. *Fly*, 11(3), 153-170.
 455 doi:10.1080/19336934.2017.1304331

456 Pilakouta, N., Richardson, J., & Smiseth, P. T. (2016). If you eat, I eat: Resolution of sexual
 457 conflict over consumption from a shared resource. *Animal Behaviour*, 111, 175-180.
 458 doi:10.1016/j.anbehav.2015.10.016

459 Price, T. A. R., Lizé, A., Marcello, M., & Bretman, A. (2012). Experience of mating rivals
 460 causes males to modulate sperm transfer in the fly *Drosophila pseudoobscura*. *Journal*
 461 *of Insect Physiology*, 58(12), 1669-1675. doi:10.1016/j.jinsphys.2012.10.008

462 Ramm, S. A., & Stockley, P. (2009). Adaptive plasticity of mammalian sperm production in
 463 response to social experience. *Proceedings of the Royal Society B: Biological Sciences*,
 464 276(1657), 745-751. doi:10.1098/rspb.2008.1296

465 Rouse, J., & Bretman, A. (2016). Exposure time to rivals and sensory cues affect how quickly
 466 males respond to changes in sperm competition threat. *Animal Behaviour*, 122, 1-8.
 467 doi:10.1016/j.anbehav.2016.09.011

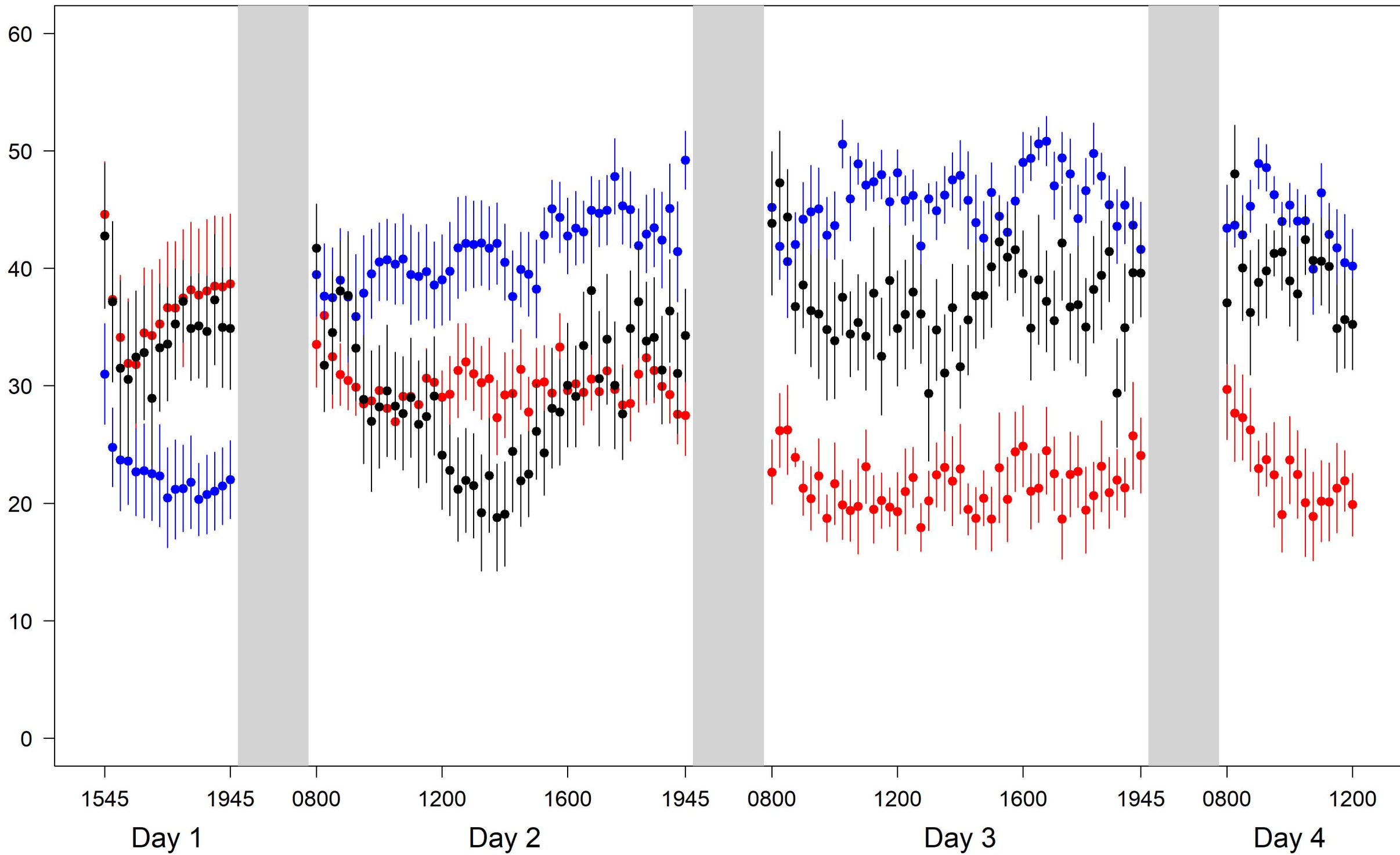
- Sakaluk, S. K., & Eggert, A.-K. (1996). Female control of sperm transfer and intraspecific variation in sperm precedence: Antecedents to the evolution of a courtship food gift. *Evolution*, 50(2), 694-703. doi:10.1111/j.1558-5646.1996.tb03879.x
- Schneider, C. A., Rasband, W. S., & Eliceiri, K. W. (2012). NIH Image to ImageJ: 25 years of image analysis. *Nature Methods*, 9, 671. doi:10.1038/nmeth.2089
- Schultzhaus, J. N., Nixon, J. J., Duran, J. A., & Carney, G. E. (2017). Diet alters *Drosophila melanogaster* mate preference and attractiveness. *Animal Behaviour*, 123, 317-327. doi:10.1016/j.anbehav.2016.11.012
- Soto-Yéber, L., Soto-Ortiz, J., Godoy, P., & Godoy-Herrera, R. (2018). The behavior of adult *Drosophila* in the wild. *PLOS ONE*, 13(12), e0209917. doi:10.1371/journal.pone.0209917
- Strömnæs, Ö., & Kvelland, I. (1962). Sexual activity of *Drosophila melanogaster* males. *Hereditas*, 48(3), 442-470. doi:10.1111/j.1601-5223.1962.tb01826.x
- Wigby, S., Sirot, L. K., Linklater, J. R., Buehner, N., Calboli, F. C. F., Bretman, A., . . . Chapman, T. (2009). Seminal fluid protein allocation and male reproductive success. *Current Biology*, 19(9), 751-757. doi:10.1016/j.cub.2009.03.036
- Wong, R., Piper, M. D. W., Wertheim, B., & Partridge, L. (2009). Quantification of food intake in *Drosophila*. *PLOS ONE*, 4(6), e6063. doi:10.1371/journal.pone.0006063
- Yun, L., Chen, P. J., Singh, A., Agrawal, A. F., & Rundle, H. D. (2017). The physical environment mediates male harm and its effect on selection in females. *Proceedings of the Royal Society B: Biological Sciences*, 284(1858). doi:10.1098/rspb.2017.0424

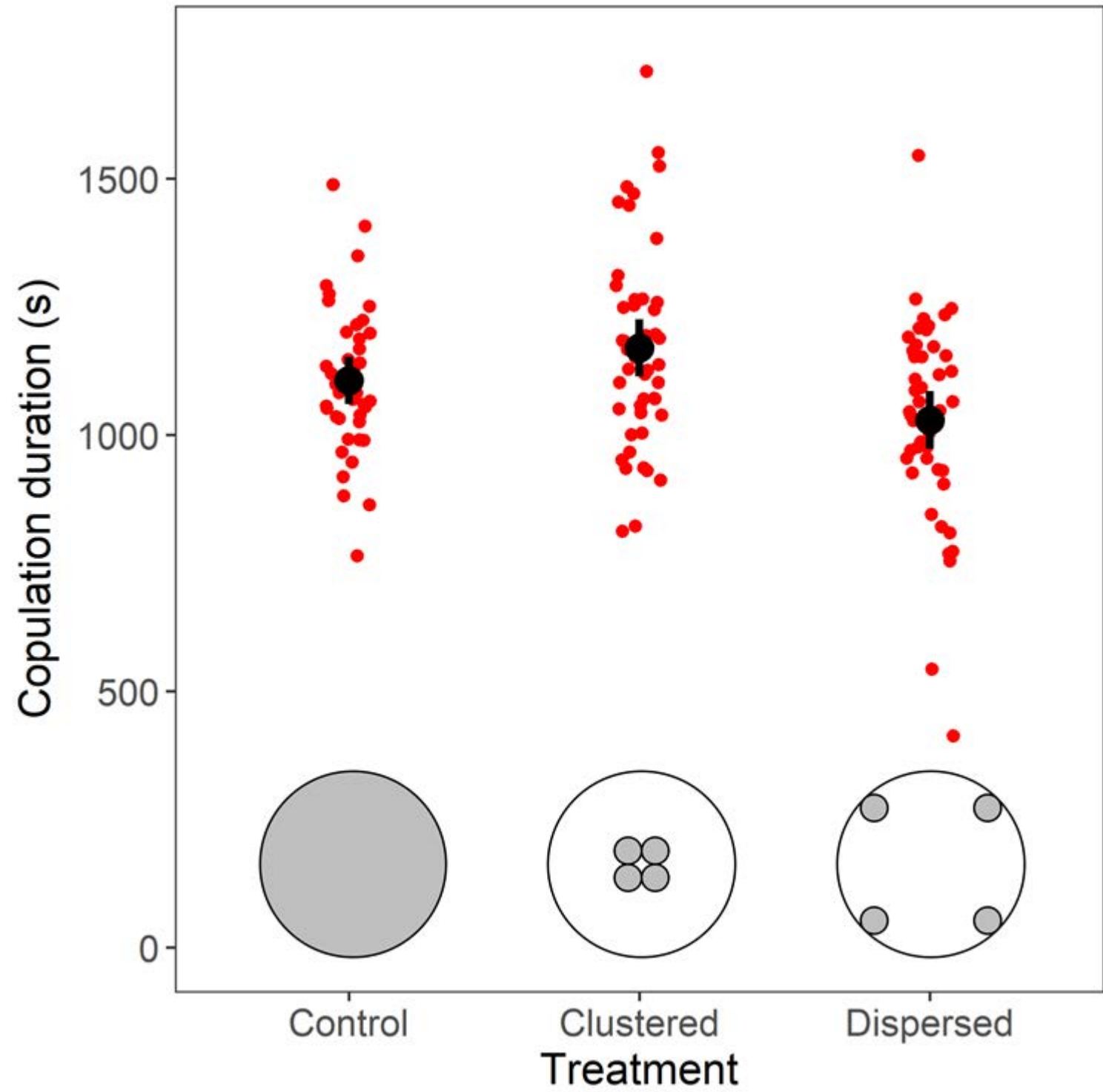
Figure 1. Mean inter-fly distance (mean of 6 pairwise distances between 4 focal flies per plate, averaged across 11 replicate plates) over time. Black = uniform treatment (evenly distributed food); red = clustered food patches; blue = dispersed food patches. Bars show standard errors of the mean for each time point across all 11 treatment replicates. Grey blocks indicate period of dark (2000 - 0800 GMT), and are not to scale.

Table 1. Details of statistical parameters from linear mixed models analyses outlined in the results. Model outputs are presented in the order they appear in the text. Response variables and data subsetting are outlined in the subheadings, predictor variables in the 'Parameter' column.

Figure 2. The effect of food resource spatial distribution on the duration of subsequent copulation. Means (black dot) and 95% confidence intervals of copulation duration (seconds). Sample sizes: clustered 49 (11 males did not mate), uniform 44 (16), dispersed 51 (9). The treatment effect on mating duration remains significant when the two mating duration values below 600s in the dispersed treatment are excluded from the analysis ($F_{2,40.9} = 3.55$, $P = 0.038$).

Mean distance between individuals (mm)





Parameter	Estimate	SE	T	p
<i>Pairwise distance between males: full duration of treatment</i>				
Clustered (intercept)	35.14	1.85	18.978	<0.0001
Uniform	-6.305	2.618	-2.408	0.021
Dispersed	-3.930	2.617	-1.501	0.142
Time sequence	-0.127	0.008	-14.946	<0.0001
Uniform*time	0.207	0.012	17.225	<0.0001
Dispersed*time	0.276	0.012	23.025	<0.0001
<i>Pairwise distance between males: final day of treatment^a</i>				
Clustered (intercept)	22.794	1.983	11.493	<0.0001
Uniform	16.560	2.777	5.963	<0.0001
Dispersed	21.224	2.777	7.643	<0.0001
<i>Copulation duration</i>				
Clustered (intercept)	1170.9	35.28	33.19	<0.0001
Uniform	-64.7	51.12	-1.266	0.2124
Dispersed	-140.31	49.89	-2.813	0.0075
<i>Copulation duration; outliers removed^b</i>				
Clustered (intercept)	1170.55	31.98	36.60	<0.0001
Uniform	-64.45	46.46	-1.387	0.173
Dispersed	-121.13	45.48	-2.66	0.0112
<i>Courtship latency</i>				
Clustered (intercept)	925.5	176.37	5.247	<0.0001
Uniform	-157.78	249.9	-0.631	0.531
Dispersed	92.17	245.2	-0.376	0.709
<i>Copulation latency</i>				
Clustered (intercept)	954.33	183.00	5.215	<0.0001
Uniform	-254.07	262.09	-0.969	0.340
Dispersed	154.10	255.73	0.603	0.552

a non-significant time*treatment term removed

b two outliers in the dispersed treatment with copulation duration values < 600 seconds removed