

2009

How effective can GSM signals, using DCM, be as an aid to coastal navigation?

Brewer, C.

Brewer, C. (2009) 'How effective can GSM signals, using DCM, be as an aid to coastal navigation?', The Plymouth Student Scientist, p. 170-198.

<http://hdl.handle.net/10026.1/13877>

The Plymouth Student Scientist
University of Plymouth

All content in PEARL is protected by copyright law. Author manuscripts are made available in accordance with publisher policies. Please cite only the published version using the details provided on the item record or document. In the absence of an open licence (e.g. Creative Commons), permissions for further reuse of content should be sought from the publisher or author.

APPENDIX A - Project Progress Gantt Chart

Task	2008												2009		
	Jan	Feb	Mar	Apr	May	Jun	Jul	Aug	Sep	Oct	Nov	Dec	Jan	Feb	Mar
Initial Research	█														
Initial Testing	█														
Project Proposal Write-up	↳	█													
Project Proposal	Deadline: 14/3														
On-Going Research	█	█	█	█	█	█	█								
Data Collection				↳	█	█	█	█							
Data Analysis							↳	█							
Write-up (1st Draft)								↳	█	█					
Review and Amend									↳	█					
Final Write-up										↳	█				
Reserve Time											↳	█	█	█	
Final Deadline												↳	2/4/09		

APPENDIX B - Admiralty Chart of Plymouth Sound Area

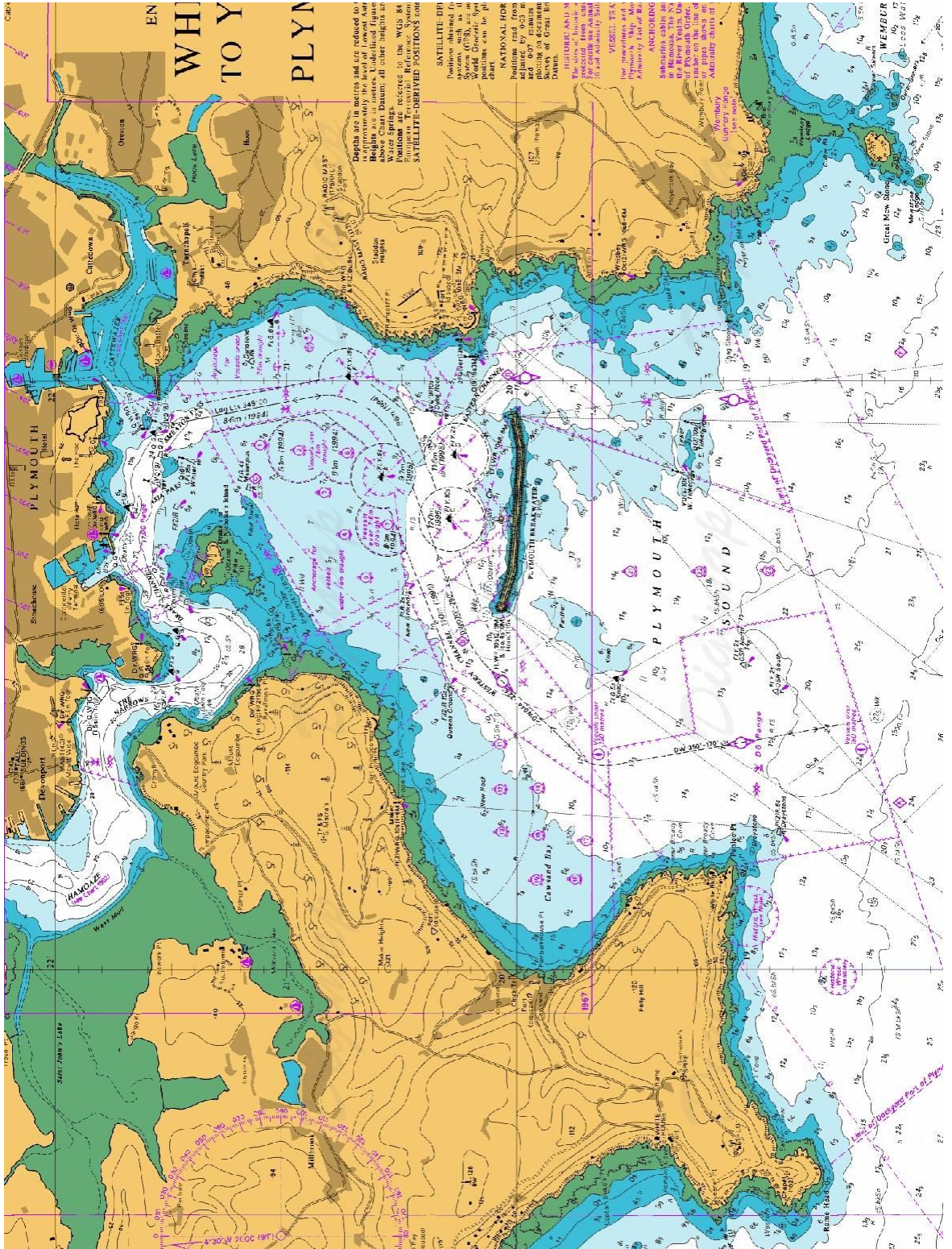
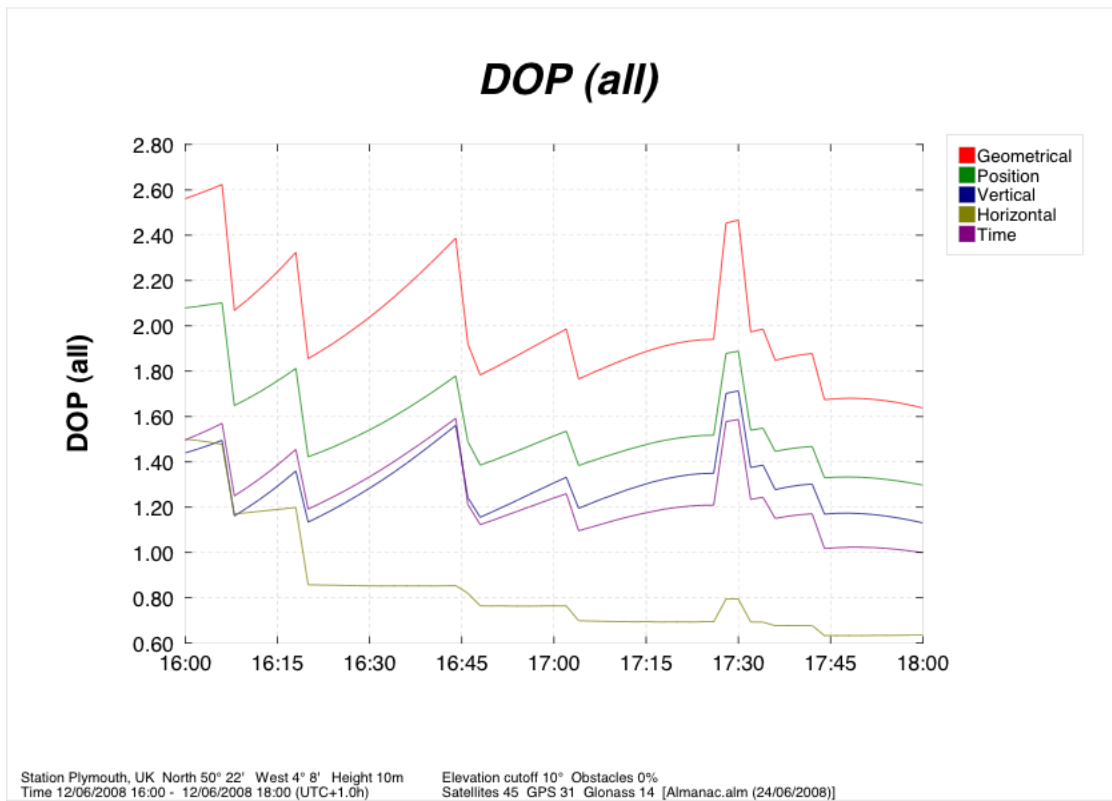


Chart: © Crown Copyright/SeaZone Solutions Ltd. [2007].

All Rights Reserved.

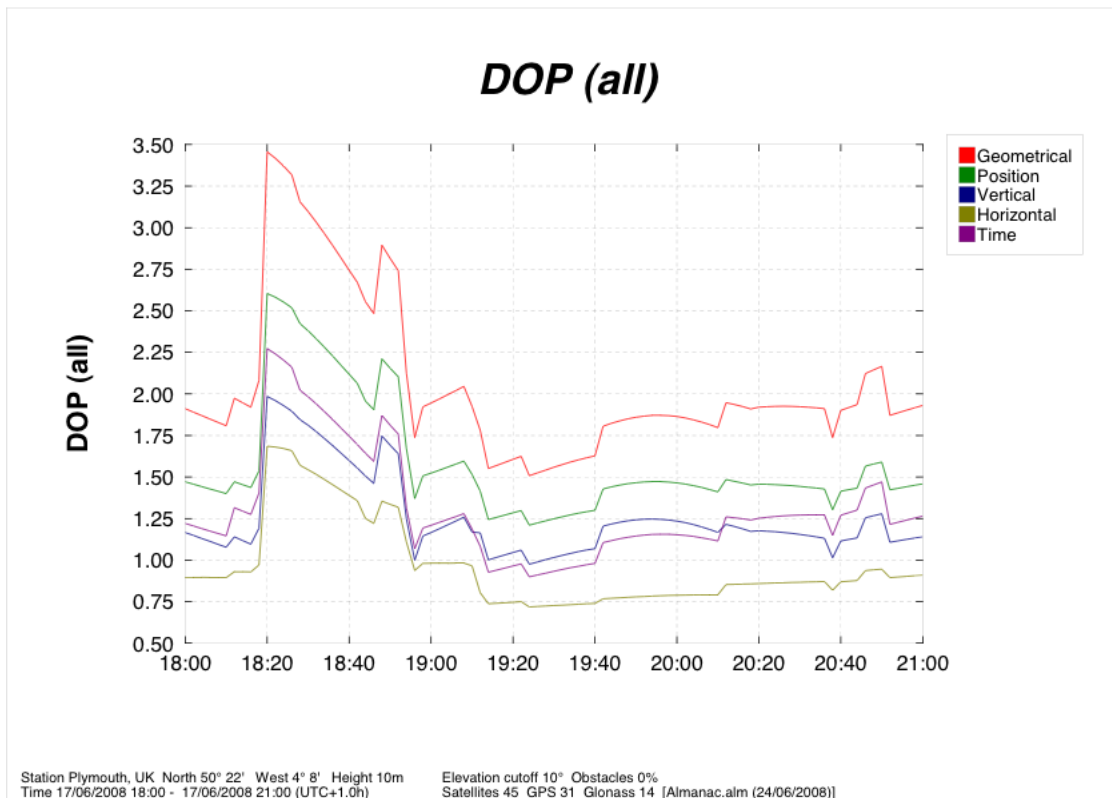
Mercator Projection. Not to be used for Navigation.

APPENDIX C - GPS Dilution of Precession (DOP) During Data Collection



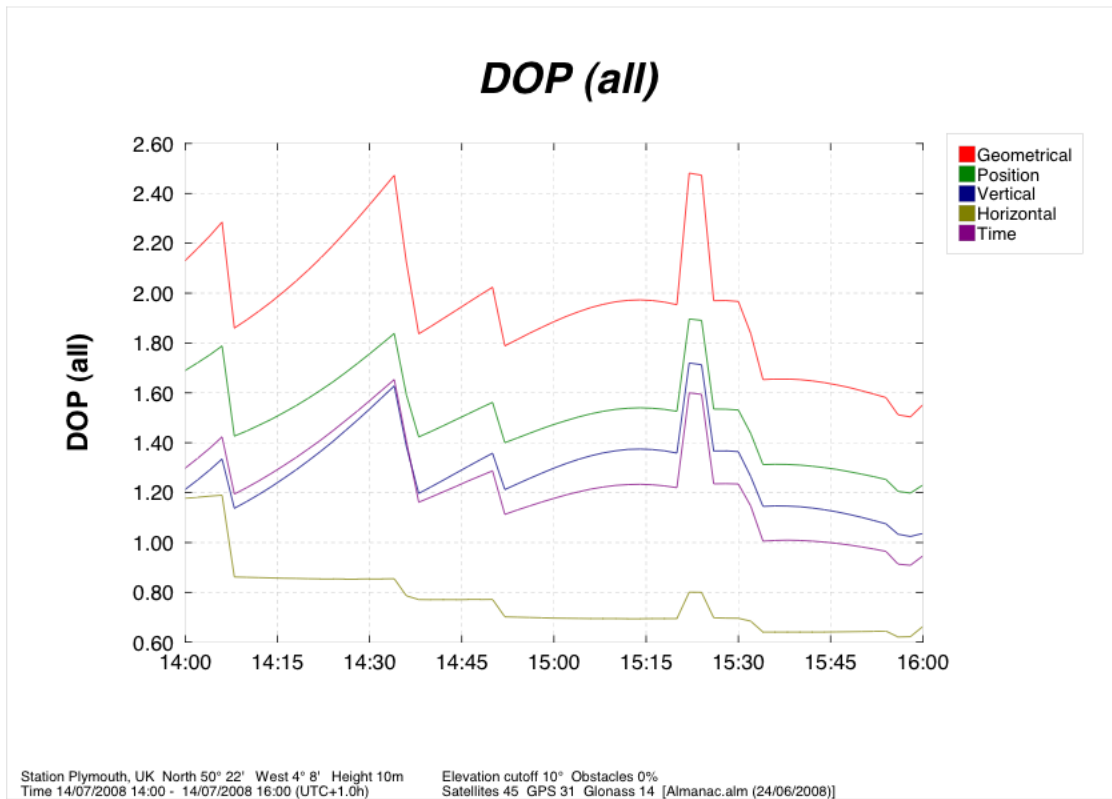
12 June 2008

Copyright 2001 – 2008 by Trimble Navigation Ltd.



17 June 2008

Copyright 2001 – 2008 by Trimble Navigation Ltd.



14 July 2008

Copyright 2001 – 2008 by Trimble Navigation Ltd.

DOP data is from Trimble GPS Planning Software:
<http://www.trimble.com/planningsoftware.html>