

2019-01-24

# Efficient coralline algal psbA mini barcoding and High Resolution Melt (HRM) analysis using a simple custom DNA preparation

Hall-Spencer, Jason

<http://hdl.handle.net/10026.1/13230>

---

10.1038/s41598-018-36998-6

Scientific Reports

Nature Research (part of Springer Nature)

---

*All content in PEARL is protected by copyright law. Author manuscripts are made available in accordance with publisher policies. Please cite only the published version using the details provided on the item record or document. In the absence of an open licence (e.g. Creative Commons), permissions for further reuse of content should be sought from the publisher or author.*

# SCIENTIFIC REPORTS



OPEN

## Efficient coralline algal *psbA* mini barcoding and High Resolution Melt (HRM) analysis using a simple custom DNA preparation

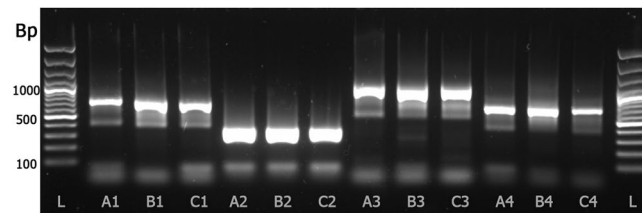
Marc B. Anglès d'Auriac<sup>1</sup>, Line Le Gall<sup>2</sup>, Viviana Peña<sup>3</sup>, Jason M. Hall-Spencer<sup>4,5</sup>, Robert S. Steneck<sup>6</sup>, Stein Fredriksen<sup>7</sup>, Janne Gitmark<sup>1</sup>, Hartvig Christie<sup>1</sup>, Vivian Husa<sup>8</sup>, Ellen Sofie Grefsrud<sup>8</sup> & Eli Rinde<sup>1</sup>

Coralline algae form extensive maerl and rhodolith habitats that support a rich biodiversity. Calcium carbonate harvesting as well as trawling activities threatens this ecosystem. Eleven species were recorded so far as maerl-forming in NE Atlantic, but identification based on morphological characters is unreliable. As for most red algae, we now use molecular characters to resolve identification of these taxa. However, obtaining DNA sequences requires time and resource demanding methods. The purpose of our study was to improve methods for achieving simple DNA extraction, amplification, sequencing and sequence analysis to allow robust identification of maerl species and other coralline algae. Our novel and easy DNA preparation method for coralline algae was of sufficient quality for qPCR amplification and sequencing of all 47 tested samples. The new *psbA* qPCR assay successfully amplified a 350 bp fragment identifying six species and uncovering two new Operational Taxonomic Units. Molecular results were corroborated with anatomical examination using i.e. scanning electron microscopy. Finally, the qPCR assay was coupled with High Resolution Melt analysis that successfully differentiated the closely related species *Lithothamnion erinaceum* and *L. cf. glaciale*. This DNA preparation and qPCR technique should vitalize coralline research by reducing time and cost associated with molecular systematics.

Coralline algae (Rhodophyta with calcareous cell walls belonging to the orders Corallinales, Hapalidiales and Sporolithales) can live unattached on the seabed to form maerl or rhodolith deposits (*sensu* Irvine and Chamberlain 1994). They grow slowly in northern Europe (maerl branches growth rate are about 1 mm year<sup>-1</sup>) where they form diverse biogenic habitats<sup>1,2</sup>. Maerl beds are analogous to coral reefs, seagrass meadows and kelp forests in being structurally and functionally complex perennial habitats that support a very rich biodiversity<sup>3-5</sup>. In the NE Atlantic, the three-dimensional structure of maerl beds are habitats for more than 500 animal taxa and 300 seaweed taxa that live among or attached to the maerl as well as on shells and pebbles/stones found interspersed<sup>6</sup>. In the European literature, the term maerl is applied to branched unattached coralline algae that are often composed by one, or occasionally/rarely a few species<sup>7</sup>. This contrasts with other non-geniculate corallines that encrust an inorganic core such as shells or stones and thus can include several taxa, sometimes overgrowing each other<sup>7</sup>. Maerl beds have a patchy distribution, and in each region they are composed of different coralline species<sup>6,8,9</sup> reflecting their biogeography.

Coralline algae are perhaps the most abundant and widespread organism to occupy hard substratum within the photic zone. They are found on all coasts from the tropics to the poles. Their calcium carbonate thallus allows them to colonise habitats with high hydrodynamism contributing to shaping the seascape<sup>10</sup>. With more than 600

<sup>1</sup>Norwegian Institute for Water Research (NIVA), N-0349, Oslo, Norway. <sup>2</sup>Institut Systématique Evolution Biodiversité (ISYEB), Muséum national d'Histoire naturelle, CNRS, Sorbonne Université, EPHE, 57 rue Cuvier, CP 39, 75005, Paris, France. <sup>3</sup>BIOCOST Research Group & CICA, Universidade da Coruña, Campus de A Coruña, 15071, A Coruña, Spain. <sup>4</sup>School of Marine and Biological Sciences, Plymouth University, Plymouth, UK. <sup>5</sup>Shimoda Marine Research Centre, Tsukuba University, Tsukuba, Japan. <sup>6</sup>University of Maine, School of Marine Sciences, Orono, USA. <sup>7</sup>University of Oslo, Oslo, Norway. <sup>8</sup>Institute of Marine Research (IMR), Bergen, Norway. Correspondence and requests for materials should be addressed to M.B.A. (email: [mad@niva.no](mailto:mad@niva.no))



**Figure 1.** DNA preparation (3 methods) and PCR (4 protocols) comparisons. 1 Kb DNA ladder (L). Grinded sample with QuickExtract followed with Monarch purification, eluate diluted  $10^{-1}$  in Di H<sub>2</sub>O (A1, A2, A3 & A4). Whole sample with QuickExtract, eluate diluted  $10^{-2}$  in Di H<sub>2</sub>O (B1, B2, B3 & B4). Whole sample with QuickExtract followed with Monarch purification, eluate diluted  $10^{-1}$  in Di H<sub>2</sub>O (C1, C2, C3 & C4). Primers GazF1 & GazR1 producing a 610 bp amplicon (A1, B1 & C1). Primers psbA21-350F & psbA22-350R producing a 350 bp amplicon (A2, B2 & C2). Primers psbA-F1 & psbA-R1 producing a 957 bp amplicon (A3, B3 & C3). Primers psbA-F1 & psbA-R600 producing a 600 bp amplicon (A4, B4 & C4). The full-length gel is presented in Supplementary Figure S3.

Target	Primer	Sequence 5'-3'	T <sub>m</sub> °C	Prod. (bp)	Reference	
Plastid gene encoding the D1 protein of photosystem II ( <i>psbA</i> )	psbA-F1	ATGACTGCTACTTTAGAAAGACG	57.1		31,46–48	
	psbA600R	CCAAATACACCAGCAACACC	57.3	600		
	psbA-R1	GCTAAATCTARWGGGAAGTTGTG	58	957		
		psbA21-350F	TTCTCTGATGGAATGCCTCTA	55.2		This study
		psbA22-350R	CAGATACCTACTACAGGCCATA	56	350	
Mitochondrial COI-5P	GazF1	TCAACAAATCATAAAGATATTGG	51.7		31,49	
	GazR1	ACTTCTGGATGTCCAAAAAYCA	56.2	710		

**Table 1.** Primers.

species currently recognized<sup>11</sup>, the subclass Corallinophycidae is one of the most diverse groups of red algae. Coralline algae show high morphological variation within a single taxon (e.g.<sup>12</sup>), and convergences among phylogenetically distant taxa<sup>13</sup>. These characteristics make their identification based on morphological and anatomical characters alone difficult. Coralline algae along the Norwegian coast were largely sampled and studied in mid-1800<sup>14–18</sup>, therefore, a re-evaluation of coralline diversity using molecular characters is needed. Recent works have re-assessed coralline species diversity in NE Atlantic<sup>8,9</sup>, although such work is scarce in Norway.

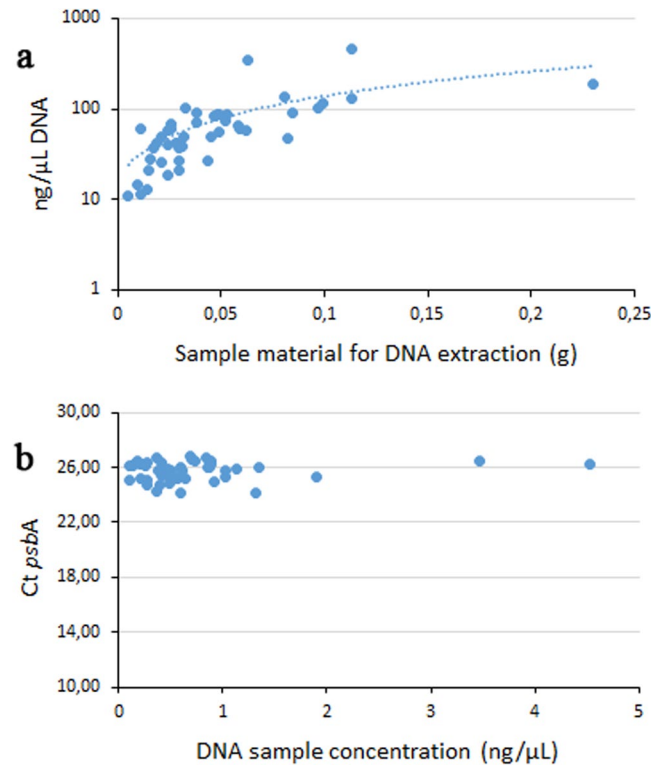
In recent years, assessments of species diversity have benefited from the development of molecular tools, and they have been successfully applied to identify coralline species and cryptic taxa<sup>8,9,19–26</sup>. However, currently available sequence data for coralline species are far from being close to a comprehensive representation of the actual diversity<sup>8</sup>. Furthermore, DNA preparation for calcareous algal species typically involves time and cost consuming steps such as careful removal of a clean fragment with a razor blade or similar equipment, grinding followed with DNA extraction and purification. Hence, more cost effective DNA preparation methods as well as easier DNA analysing methods, have the potential to speed up the progress of molecular work on corallines, and enhance the completeness of a public data base for this complex algal group<sup>27</sup>.

Here, we develop and evaluate a cost effective and simple new approach of DNA preparation, PCR amplification, High Resolution Melt (HRM) analysis, and DNA sequencing for coralline species identification. To our knowledge, it is the first time that HRM analysis, a cheap and fast alternative to sequencing, is applied to marine macroalgae for diagnostic purposes, increasing the toolbox available to marine biologists. Our case study, which focused on Norwegian maerl beds, enables us to present preliminary results on coralline species diversity forming maerl beds from this region.

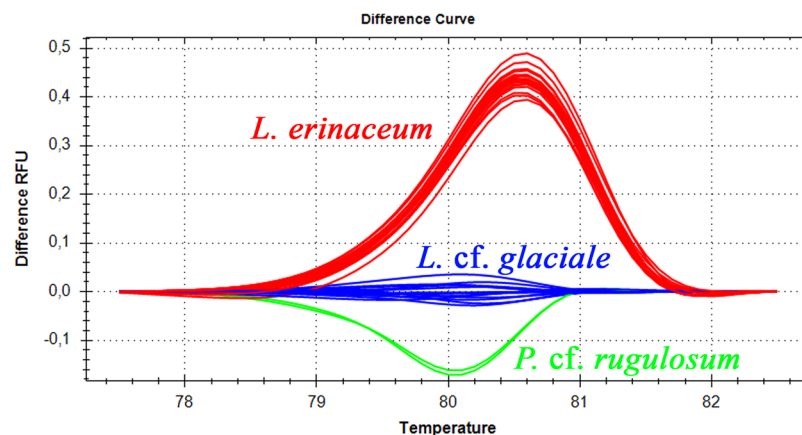
## Results

The new and simple DNA sample preparation “B” (Fig. 1, lanes B1, B2, B3 & B4) was compared with two other methods involving sample grinding “A” and DNA purification “C” (Fig. 1 lanes A1, A2, A3, A4 & C1, C2, C3, C4). In addition to the new primer pair psbA21-350F & psbA22-350R (Fig. 1 lanes A2, B2 & C2), three additional primer pairs amplifying larger products from the *psbA* and mitochondrial COI genes (Table 1) were used for evaluation of the DNA preparation method (Fig. 1, lanes A1, B1, C1, A3, B3, C3, A4, B4 and C4). All three tested DNA preparation methods were successful in amplifying products with the 4 PCR protocols yielding products varying from 350 to 957 bp (Table 1). However, the new primer pair showed the strongest product amplification with all three DNA preparation protocols (Fig. 1 lanes A2, B2 and C2) and all four primer pairs showed best amplification with the new simple DNA sample preparation method (Fig. 1 lanes B1, B2, B3 and B4). The new primers and DNA preparation were used for analysing all 47 coralline individuals.

The aliquots collected for the simple DNA sample preparation (0.005 to 0.023 g) yielded DNA concentrations varying from 11 to 452 ng/μL (Fig. 2a). Although there was a positive correlation between material input and DNA concentration yield, all samples diluted 100 X in diH<sub>2</sub>O produced a Ct at 25.7 ± 0.7 (Figs 2b and S1a).

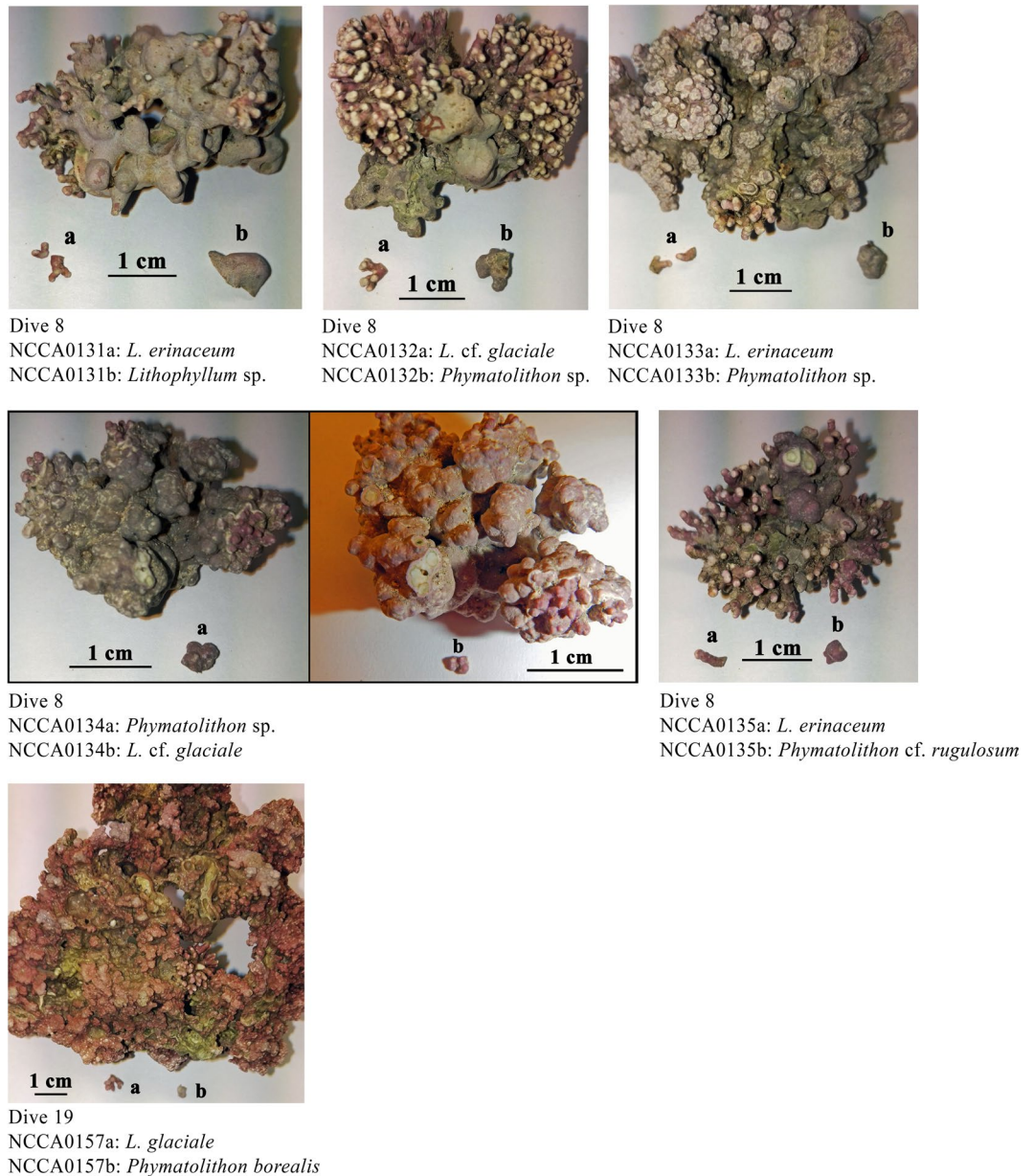


**Figure 2.** Sample DNA preparation evaluation. (a) DNA concentration related to sample quantity. (b) qPCR Ct result as function of DNA concentration (all samples diluted 100 times in DI H<sub>2</sub>O).



**Figure 3.** High Resolution Melt analysis of psbA 350 bp product. The central blue cluster shows all analyzed *L. glaciale* and was used as the reference cluster.

A single mastermix for real time PCR was used for product assessment by melt curve (Supplementary Fig. S1b), HRM analysis (Fig. 3), and was further diluted as template for cycle sequencing. The produced sequences and sample information are available at BOLD (the Barcode of Life Data Systems <http://www.boldsystems.org/>) with accession numbers MG191372-MG191375, MG191658-MG191703 and MH034113. Some coralline algal specimens presented more than one distinct morphology. To reveal the possible presence of several species, separate aliquots were sampled from these. Six specimens were suspected of being composed of several taxa (five from d8-Krøttøya & one from d19-Sørøya). All six specimens revealed the occurrence of two different species as shown in Fig. 4. The taxonomic results are presented in Table 2 in a matrix format showing all eight taxa and their occurrence either as a single maerl species or co-occurrence with another species. The two most common maerl species were *Lithothamnion cf. glaciale* and *L. erinaceum*, with 21 and 10 specimens respectively, which together constituted 66% of the samples. We use *L. cf. glaciale* because molecular data from the lectotype of *L. glaciale* are not currently available for comparison. *Phymatolithon calcareum* which is considered to be a major maerl-forming species in Europe appeared to be scarce (three specimens, from Karmøy in Southern Norway, d21). Both dominant maerl species, *Lithothamnion erinaceum* and *Lithothamnion cf. glaciale*, were found alone for 86 and 70%



**Figure 4.** Six two-species maerl specimens. Specimen NCCA0131, NCCA0132, NCCA0133, NCCA0134 & NCCA0135 from d8-Krøttøya and NCCA0157 from d19-Sørøya.

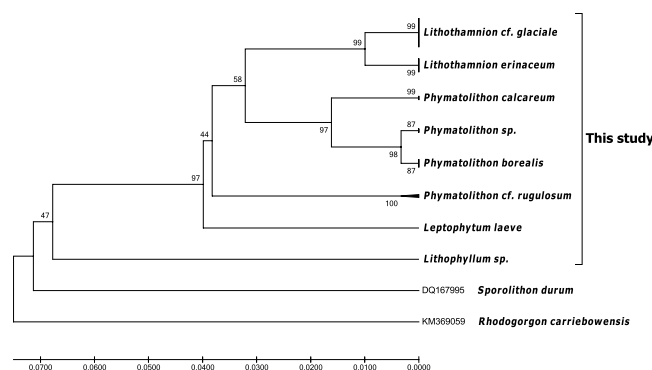
of the collections respectively, the remainder growing together with other coralline species (for three specimens each. See Fig. 4). These six multispecies specimens were found at Krøttøya d8 (n = 5) and Sørøya d19 (n = 1) and the associated coralline species were *Phymatolithon borealis* (n = 1), *Phymatolithon* cf. *rugulosum* (n = 1) and two new OTUs, *Phymatolithon* sp. (n = 3), and *Lithophyllum* sp. (n = 1).

Anatomical examination of sequenced specimen corroborated our molecular results (See Supplementary Fig. S2). Thus, the most abundant species identified as *Lithothamnion* cf. *glaciale* and *L. erinaceum* showed features described for the genus *Lithothamnion* such as cell fusions as the only type of connections between cells of contiguous filaments, the occurrence of flared epithallial cells and subepithallial cells as long or longer than cells subtending them in vertical section, and multiporate sporangial conceptacles (Supplementary Fig. S2A–F). Species belonging to the genus *Phymatolithon* shared with *Lithothamnion* the presence of cell fusions and multiporate sporangial conceptacles, but they are characterized by producing domed epithallial cells, and subepithallial cells usually shorter than cells subtending them in vertical section (Supplementary Fig. S2G–K). By contrast the genus *Lithophyllum* has exclusively secondary pit-connections between cells of contiguous filaments (Supplementary Fig. S2L,M).

HRM analysis produced unambiguous distinction between *Lithothamnion erinaceum*, *Lithothamnion* cf. *glaciale* and *Phymatolithon* cf. *rugulosum* (Fig. 3). The other species did not cluster adequately for differentiation using HRM. Hence the method may be used to easily differentiate the two closely related species *L. erinaceum*

Species	<i>L. cf. glaciale</i>	<i>L. erinaceum</i>	<i>P. borealis</i>	<i>P. calcareum</i>	<i>P. cf. rugulosum</i>	<i>Phymatolithon</i> sp.	<i>L. laeve</i>	<i>Lithophyllum</i> sp.	Tot.
<i>Lithothamnion cf. glaciale</i>	18*	0	1**	0	0	2**	0	0	21
<i>Lithothamnion erinaceum</i>	0	7*	0	0	1**	1**	0	1**	10
<i>Phymatolithon borealis</i>	1**	0	5*	0	0	0	0	0	6
<i>Phymatolithon calcareum</i>	0	0	0	3*	0	0	0	0	3
<i>Phymatolithon cf. rugulosum</i>	0	1**	0	0	1*	0	0	0	2
<i>Phymatolithon</i> sp.	2**	1**	0	0	0	0	0	0	3
<i>Leptophytum laeve</i>	0	0	0	0	0	0	1*	0	1
<i>Lithophyllum</i> sp.	0	1**	0	0	0	0	0	0	1
Total	21	10	6	3	2	3	1	1	47

**Table 2.** Taxa sampled in 2016 along the Norwegian coast, and co-occurrence matrix for species found together. \*Single species maerl or rhodolith sample; \*\*co-occurrence of two species on the same maerl specimen, found in dive 8 (5) & dive 19 (1).



**Figure 5.** Species delimitation among sequenced specimens. Tree inferred by unweighted pair group means analysis tree for the psbA sequences using Kimura 2-parameter substitution model. The percentage of replicate trees in which the associated taxa clustered together in the bootstrap test (10,000 replicates) is shown next to the branches. In addition to the 47 coralline specimens sequenced for this study, 2 sequences, DQ167995 & KM369059, were used to serve as outgroup. GenBank accession numbers for the sequences generated for this study are indicated in Additional Table 2.

and *L. cf. glaciale* without requiring sequencing. Sequencing of the 350 bp product was used to infer taxonomic relationship between the individuals (Fig. 5). It shows the close relationship between *Lithothamnion cf. glaciale* and *L. erinaceum* as well as the clustering of *Phymatolithon* sp. with *Phymatolithon borealis* and *P. calcareum*.

The distribution of the eight coralline species found on maerl beds along the Norwegian coast is indicated in Supplementary Tables S1 and S2, showing, amongst other, that *P. calcareum* was only found in the south at Karmøy.

## Discussion

Molecular tools are steadily becoming more important for taxonomic work, and the development of simpler procedures and a reduction in costs will be important to widen the use of these techniques. DNA preparation, often the first step in a molecular laboratory, can be time-consuming and expensive. Simple DNA preparation methods without purification steps have been developed for marine organisms such as mussels<sup>28</sup> sea urchins<sup>29</sup> and oysters<sup>30</sup>. Typical DNA preparation for coralline algae involves grinding or pulverization in liquid nitrogen, followed by extraction using commercially available kits<sup>31,32</sup>. This approach is time-consuming, may increase cross contamination risk with the production of sample powder, and is costly due to the price of extraction kits. The method we propose simplifies and speeds up the required work, although good knowledge of coralline algae and their biology is still required to ensure appropriate tissue selection for DNA preparation. A small aliquot of the sample is separated from the studied coralline (see Fig. 4) and directly added to a 1.5 mL Eppendorf tube to which qPCR compatible lysis buffer is added prior to incubation. The method is robust as aliquots are between 0.005 and 0.23 g and yet produced homogenous qPCR results after diluting the DNA preparation 100 x in diH<sub>2</sub>O (see Figs 2 and S1). Further, a common difficulty associated with barcode sequencing is degraded DNA, in particular when samples originate from old collections preserved in museums, or suffer from poor storage conditions, resulting in low amplification rates. This problem has been addressed by developing new primers to amplify a shorter target than those in reference assays (see Table 1). Reducing the size of the targeted amplicon by developing such mini barcodes<sup>33</sup> increases amplification rates and yet retains sufficient information

for taxonomic purposes<sup>34</sup>. The new primers used in this study target a 350 bp section of the *psbA* gene, retaining sufficient variability for differentiating the closely related species *Lithothamnion cf. glaciale* from *L. erinaceum* with six Single Nucleotide Polymorphisms (SNPs). Sequence variation among PCR products of same length may be easily differentiated, without sequencing, by using HRM for various diagnostic purposes such as for example fish<sup>35,36</sup>, mollusc<sup>37,38</sup> and microalgae<sup>39</sup> species and genotypic sex identification. In this study HRM was used on the 350 bp *psbA* amplicons to identify three maerl species, *Lithothamnion erinaceum*, *Lithothamnion cf. glaciale* and *Phymatolithon calcareum*, from the Norwegian coasts. HRM is a very cheap diagnostic alternative to sequencing for identification purposes. Although sequencing has become cheaper when outsourced one still must prepare, send the samples for sequencing and await results. Within the scope of this study, HRM enables unambiguous differentiation between *Lithothamnion cf. glaciale* and *L. erinaceum*, the two most common species found in the studied area, which are also morphologically close and difficult to differentiate from each other. While the two *Lithothamnion* species were abundant, and are common in circumpolar regions (Iceland, Scotland, British Columbia<sup>8,9</sup>), *Phymatolithon calcareum* was scarce in Norwegian maerl beds. This latter species is, however, reported as one of the major maerl species in Europe along with the temperate *Lithothamnion corallioides*, and both are listed in the annex V of the EU Habitats Directive. Apart from these three maerl species detected in Norway, several other coralline taxa were found growing together with *L. glaciale* or *L. erinaceum* or formed rhodoliths themselves around stones, shell fragments or the remains of other coralline algae, viz. *Phymatolithon borealis*, *Phymatolithon cf. rugulosum*, *Phymatolithon sp.*, *Lithophyllum sp.* and *Leptophyllum laeve*.

Meta barcoding is an alternative method to identify species in a bulk sample. Even if it is extremely efficient, the method developed in this study presents the advantage over metabarcoding that it allows traceability between the algal specimen and the sequence, a necessary step in building up a DNA library of life. In some cases, multiple coralline species occurred together in the same unattached maerl specimen; this method was able to detect and identify these associations between coralline species, that mainly corresponded to the crustose taxa *Phymatolithon borealis*, *P. cf. rugulosum*, *Phymatolithon sp.* and *Lithophyllum sp.* associated to either *Lithothamnion cf. glaciale* or *L. erinaceum* (see Table 2 and Fig. 4). The anatomical examination of the specimens confirmed that molecular results obtained matched the diagnostic features described for these coralline taxa. These tools will help unravel species determination of coralline algae shedding light on the way they may interact between them and with their environment. Knowledge on how these organisms contribute to forming the seascape they belong to should provide new insights for coastal management and in particular restoration.

## Conclusions

Three different DNA preparation methods, as well as four PCR protocols targeting *psbA* and COI-5P, were evaluated on coralline algae sampled from Norwegian maerl beds. The results show that the new simple DNA preparation method produced the best results, as well as the shorter *psbA* PCR which produced amplicons for all 47 studied samples with sufficient sequences variability for taxa identification and for successful HRM analysis of the two most commonly occurring maerl taxa in northern Europe, *L. erinaceum* and *L. cf. glaciale*. Finally, a single qPCR mastermix was used for both product assessment, HRM and cycle sequencing avoiding the need for running gels and performing a second PCR amplification with a different mastermix for sequencing. These new simple and low-cost methods should ease the acquisition of DNA sequences needed to foster investigation on coralline diversity with molecular systematics tools.

## Methods

**Sampling and DNA preparation.** A total of 47 free-living coralline specimens (maerl and rhodoliths) were collected and analysed from five areas along the Norwegian coast in 2016 and 2017 (Supplementary Table S1). Each sample was labelled -NCCA- with a unique 4-digit identifier. When a sample appeared to be composed of several species, an additional letter ("a", "b", etc.), was added to the corresponding NCCA number. Pictures of all samples and aliquots used for DNA preparation can be found on Barcode of Life Data Systems (BOLD)<sup>40</sup> Dataset - DS-NOCCAMET Corallines DNA preparation & *psbA* HRM, associated to the produced sequences (Supplementary Table S2). The samples were conserved by drying in heating cabinets at 60 °C, overnight.

We developed a simple DNA preparation protocol without any purification steps. Each sample was first thoroughly brushed using a common dish brush with tap water and rinsed with deionized water. A small aliquot was broken off from the main sample, weighting between 0.005 and 0.23 g (Figs 2A and 4) and added to a 1.5 mL Eppendorf tube without any further preparation. QuickExtract (Epicentre Technologies Corporation, Madison, USA) buffer was added, 200 µL per tube, followed with an incubation at 65 °C for 15 min and 98 °C inactivation for 5 min. DNA concentration and quality was measured using NanoDrop ND-1000 spectrophotometer ([www.nanodrop.com](http://www.nanodrop.com)). The lysates were further diluted 10<sup>-2</sup> in DI water for PCR amplification followed with cycle sequencing. For method evaluation only, grinding was also performed using a rotary tool (Dexter 135 W), as well as DNA purification using Monarch PCR & DNA Cleanup Kit (New England Biolabs Inc.). A single non-identified coralline algal sample was used for the method evaluation. All 47 samples (Supplementary Table S2) were analysed using the new method.

**Primer design, PCR & HRM.** Oligo7 v7.60<sup>41</sup> was used for designing primers *psbA21-350F* and *psbA22-350R* for amplification of a 350 bp fragment of the plastid encoded *psbA* gene. Three additional primer pairs targeting either the *psbA* or mitochondrial COI genes were used for method development. Primer sequences are given in Table 1. PCR amplifications were performed using a CFX96 thermocycler (Bio-Rad, Hercules, CA, USA) in 15 µL reaction volume containing 7.5 µL SsoFast mastermix (Bio-Rad), 0.5 µM final concentration of each primer (Eurofins MWG, Ebersberg, Germany) and 1.5 µL sample. Reaction volume was completed with sterile deionised water. PCR optimal annealing temperature was determined by running a PCR with a temperature gradient. Optimized amplification for the newly designed primer pair *psbA21-350F* & *psbA22-350R* was carried out

under the following conditions: a denaturing step for 2 min at 98 °C, followed by 40 cycles of 98 °C for 10 s, 57 °C for 20 s and 72 °C for 20 s. Melt curve analysis was performed between 65 °C and 95 °C using 0.2 °C increments with readings after 5 s. HRM analysis was performed using Precision Melt analysis software (Bio-Rad) by setting the difference curve analysis between 76.4 and 82.6 °C. SsoFast™ EvaGreen® mastermix was used for HRM analysis as well as for product input for sequencing. PCR product electrophoresis was done on a 1.7% agarose gel (Agarose I biotechnology grade, VWR) in 2X TAE buffer (VWR), run for 110 min at 70 V and visualized with GelRed (Biotium; [www.biosciences.co.uk](http://www.biosciences.co.uk)) staining using a Gel Doc™ XR + Documentation System (Bio-Rad) for acquiring pictures (Figs 1 and S3).

**Sequencing and genetic analysis.** Cycle sequencing was performed in both directions using amplification primers and BigDye Terminator v3.1 kit (Life Technologies, Applied Biosystems). The PCR template was prepared by diluting PCR product 25X by adding 2 µl product to 48 µl DI water. Further, 1 µl of the prepared template was added to 0.5 µl Terminator mix, 0.32 µl 10 µM forward or reverse primer, 1.75 µl Terminator 5X buffer and 6.43 µl DI H<sub>2</sub>O. Cycle sequencing was done using an ABI 7500 qPCR machine as following: 96 °C for 1 min followed by 28 cycles of 96 °C for 10 s, 50 °C for 5 s and 60 °C for 3 min. Sequence purification was performed using BigDye XTerminator Purification kit (Life Technologies, Applied Biosystems) adding 10 µl XTermination solution and 45 µl Sam solution to each PCR sample well, reaching a final volume of 65 µl. The PCR plate was then sealed and vortexed for 30 min prior to being processed by an ABI3730XL DNA analyzer (Life Technologies, Applied Biosystems). Trace files analyses were performed using CodonCode Aligner v7 (CodonCode Corporation), sequence alignments were performed using MultAlin<sup>42</sup> and the species delimitation was inferred using the UPGMA method (unweighted pair group means analysis) using MEGA version 7.0.21<sup>43</sup>. The genetic distances were computed using the Kimura 2-parameter method<sup>44</sup> and are in the units of the number of base substitutions per site. The analysis involved 49 nucleotide sequences, including two reference sequences from GenBank. All positions containing gaps and missing data were eliminated. There were 307 positions in the final dataset.

**Anatomical studies of sequenced corallines.** Consistent diagnostic features described for North Atlantic coralline genera (such as, type of intercellular connections between contiguous cell filaments, shape of epithallial, size of subepithallial initial cells, type of sporangial conceptacle –uniporate/multiporate–, thallus organization and construction; see Adey and Adey<sup>45</sup> and Irvine and Chamberlain<sup>7</sup>) were observed using a scanning electron microscope (SEM, model JEOL JSM 6400, Universidade da Coruña, Spain). Before SEM examination, representative fragments for each sample sequenced were removed under a stereomicroscope and they were positioned on a stub and gold-coated to show surface view, transverse view and reproductive structures (if present).

All data generated or analysed during this study are included in this article (and its Supplementary Information files). DNA sequences are accessible at BOLD (the Barcode of Life Data Systems <http://www.boldsystems.org/>) and GenBank (<https://www.ncbi.nlm.nih.gov/genbank/>).

## References

- Blake, C. & Maggs, C. A. Comparative growth rates and internal banding periodicity of maerl species (Corallinales, Rhodophyta) from northern Europe. *Phycologia* **42**, 606–612, <https://doi.org/10.2216/i0031-8884-42-6-606.1> (2003).
- Foster, M. S. Rhodoliths: Between rocks and soft places. *J Phycol* **37**, 659–667, <https://doi.org/10.1046/j.1529-8817.2001.00195.x> (2001).
- Hall-Spencer, J. M., Grall, J., Moore, P. G. & Atkinson, R. J. A. Bivalve fishing and maerl-bed conservation in France and the UK –retrospect and prospect. *Aquat Conserv* **13**, S33–S41, <https://doi.org/10.1002/aqc.566> (2003).
- Barbera, C. *et al.* Conservation and management of northeast Atlantic and Mediterranean maerl beds. *Aquat Conserv* **13**, S65–S76, <https://doi.org/10.1002/aqc.569> (2003).
- Peña, V., Barbera, I., Grall, J., Maggs, C. A. & Hall-Spencer, J. M. The diversity of seaweeds on maerl in the NEAtlantic. *Mar Biodiv* **44**, 533–551, <https://doi.org/10.1007/s12526-014-0214-7> (2014).
- Hernández-Kantún, J. J. *et al.* In *Rhodolith/maerl beds: A Global Perspective* Vol. 15 *Series Coastal Research Library* (ed. R. Riosmena, Nelson, W., Aguirre J, Eds) Ch. 10, 265–279 (Springer, 2017).
- Irvine, L. M. & Chamberlain, Y. M. *Seaweeds of the British Isles*. Vol. 1, Rhodophyta, Part 2B. Corallinales, Hildenbrandiales (The Natural History Museum, 1994).
- Pardo, C. *et al.* A multilocus species delimitation reveals a striking number of species of coralline algae forming Maerl in the OSPAR maritime area. *PLoS One* **9**, e104073, <https://doi.org/10.1371/journal.pone.0104073> (2014).
- Melbourne, L. A., Hernández-Kantún, J. J., Russell, S. & Brodie, J. There is more to maerl than meets the eye: DNA barcoding reveals a new species in Britain, *Lithothamnion erinaceum* sp. nov. (Hapalidiales, Rhodophyta). *European Journal of Phycology*, 1–13, <https://doi.org/10.1080/09670262.2016.1269953> (2017).
- Bostrom, C., Pittman, S. J., Simenstad, C. & Kneib, R. T. Seascape ecology of coastal biogenic habitats: advances, gaps, and challenges. *Mar Ecol Prog Ser* **427**, 191–217, <https://doi.org/10.3354/meps09051> (2011).
- Guiry, M. D. & Guiry, G. M. In *World-wide electronic publication* (National University of Ireland, Galway. <http://www.algaebase.org>; last searched in December 2017).
- Adey, W. H. The genera *Lithothamnium*, *Leptophytum* (nov. gen.) and *Phymatolithon* in the Gulf of Maine. *Hydrobiologia* **28**, 321–370, <https://doi.org/10.1007/bf00130389> (1966).
- Steneck, R. S. The Ecology of Coralline Algal Crusts - Convergent Patterns and Adaptive Strategies. *Annual Review of Ecology and Systematics* **17**, 273–303, <https://doi.org/10.1146/annurev.es.17.110186.001421> (1986).
- Kjellman, F. R. *Norra Ishafvets Algflora*. Vol. 3 Vega-expeditionens Vetenskapliga Iakttagelser 1–431 (1883).
- Foslie, M. *The Norwegian forms of Lithothamnion*. Vol. 29 Norske Videnskabers Selskabs Skrifter 29–208 (1895).
- Areschoug, J. E. *Phyceae Scandinaviae Marinae. Sect. Prior Fucus continens*. Vol. *Nova Acta Regiae Soc. Sci. Upsal* **13**, 223–382 (1847).
- Fries, E. M. *Summa vegetabilium Scandinaviae. Sectio prior. E. Typographia.*, Vol. Academica, Uppsala. 1–258 (1846).
- Kleen, E. *Om Nordlandens högre hafsalger. Vol. Öfversigt af Kongliga Vetenskaps-Akademiens Förhandlingar* **1874**, 3–46 (1875).



19. Carro, B., Lopez, L., Peña, V., Barbara, I. & Barreiro, R. DNA barcoding allows the accurate assessment of European maerl diversity: a Proof-of-Concept study. *Phytotaxa* **190**, 176–189, <https://doi.org/10.11646/phytotaxa.190.1.12> (2014).
20. Hind, K. R. & Saunders, G. W. A Molecular Phylogenetic Study of the Tribe Corallineae (Corallinales, Rhodophyta) with an Assessment of Genus-Level Taxonomic Features and Descriptions of Novel Genera. *J Phycol* **49**, 103–114, <https://doi.org/10.1111/jpy.12019> (2013).
21. Walker, R. H., Brodie, J., Russell, S., Irvine, L. M. & Orfanidis, S. Biodiversity of Coralline Algae in the Northeastern Atlantic Including Corallina Caespitosa Sp Nov (Corallinoideae, Rhodophyta). *J Phycol* **45**, 287–297, <https://doi.org/10.1111/j.1529-8817.2008.00637.x> (2009).
22. Bittner, L. *et al.* Evolutionary history of the Corallinales (Corallinophycidae, Rhodophyta) inferred from nuclear, plastidial and mitochondrial genomes. *Mol. Phylogenet. Evol.* **61**, 697–713, <https://doi.org/10.1016/j.ympev.2011.07.019> (2011).
23. Peña, V. *et al.* Detection of gametophytes in the maerl-forming species Phymatolithon calcareum (Melobesioideae, Corallinales) assessed by DNA barcoding. *Cryptogamie Algol* **35**, 15–25, <https://doi.org/10.7872/crya.v35.iss1.2014.15> (2014).
24. Peña, V., Rousseau, F., De Rieviers, B. & Le Gall, L. First assessment of the diversity of coralline species forming maerl and rhodoliths in Guadeloupe, Caribbean using an integrative systematic approach. *Phytotaxa* **190**, 190–215, <https://doi.org/10.11646/phytotaxa.190.1.13> (2014).
25. Hernandez-Kantun, J. J. *et al.* Sequencing Type Material Resolves the Identity and Distribution of the Generitype Lithophyllum Incrustans, and Related European Species L. Hibernicum and L. Bathyporum (Corallinales, Rhodophyta). *J Phycol* **51**, 791–807, <https://doi.org/10.1111/jpy.12319> (2015).
26. Adey, W. H., Hernandez-Kantun, J. J., Gabrielson, P. W., Nash, M. C. & Hayek, L.-A. C. *Phymatolithon (Melobesioideae, Hapalidiales) in the Boreal-Subarctic Transition Zone of the North Atlantic: A Correlation of Plastid DNA Markers with Morpho-Anatomy, Ecology, and Biogeography* (2018).
27. Le Gall, L., Delsuc, F., Hourdez, S., Lecointre, G. & Rasplus, J. Y. Toward the DNA library of life. *European Journal of Taxonomy*, <https://doi.org/10.5852/ejt.2017.266> (2017).
28. Lasota, R., Piłczyńska, J., Williams, S. T. & Wolowicz, M. Fast and easy method for total DNA extraction and gene amplification from larvae, spat and adult mussels Mytilus trossulus from the Baltic Sea. *Oceanological and Hydrobiological Studies* **42**, 486–489, <https://doi.org/10.2478/s13545-013-0105-8> (2013).
29. Anglès d'Auriac, M. *et al.* New microsatellite loci for the green sea urchin *Strongylocentrotus droebachiensis* using universal M13 labelled markers. *BMC Res Notes* **7**, 699, <https://doi.org/10.1186/1756-0500-7-699> (2014).
30. Anglès d'Auriac, M. B., Norling, P. & Rinde, E. A rapid and inexpensive DNA extraction protocol for oysters. *Animal Genetics* **47**, 389–390, <https://doi.org/10.1111/age.12417> (2016).
31. Peña, V. *et al.* An integrative systematic approach to species diversity and distribution in the genus Mesophyllum (Corallinales, Rhodophyta) in Atlantic and Mediterranean Europe. *European Journal of Phycology* **50**, 20–36, <https://doi.org/10.1080/09670262.2014.981294> (2015).
32. Yang, E. C. *et al.* Divergence time estimates and the evolution of major lineages in the florideophyte red algae. *Scientific Reports* **6**, 21361, <https://doi.org/10.1038/srep21361> (2016).
33. Hajibabaei, M. *et al.* A minimalist barcode can identify a specimen whose DNA is degraded. *Mol. Ecol. Notes* **6**, 959–964, <https://doi.org/10.1111/j.1471-8286.2006.01470.x> (2006).
34. Hernandez-Triana, L. M. *et al.* Recovery of DNA barcodes from blackfly museum specimens (Diptera: Simuliidae) using primer sets that target a variety of sequence lengths. *Mol. Ecol. Resour.* **14**, 508–518, <https://doi.org/10.1111/1755-0998.12208> (2014).
35. Anglès d'Auriac, M. B. COMplementary Primer ASymmetric PCR (COMPAS-PCR) Applied to the Identification of Salmo salar, Salmo trutta and Their Hybrids. *PLoS One* **11**, e0165468, <https://doi.org/10.1371/journal.pone.0165468> (2016).
36. Anglès d'Auriac, M. B., Urke, H. A. & Kristensen, T. A rapid qPCR method for genetic sex identification of Salmo salar and Salmo trutta including simultaneous elucidation of interspecies hybrid paternity by high-resolution melt analysis. *J. Fish Biol.* **84**, 1971–1977, <https://doi.org/10.1111/jfb.12401> (2014).
37. Meistertzheim, A. L., Heritier, L. & Lejart, M. High-Resolution Melting of 18S rDNA sequences (18S-HRM) for discrimination of bivalves species at early juvenile stage: application to a spat survey. *Mar Biol* **164**, <https://doi.org/10.1007/s00227-017-3162-5> (2017).
38. Xu, F., Li, L., Wang, J. & Zhang, G. Use of high-resolution melting analysis for detecting hybrids between the oysters *Crassostrea sikamea* and *C. angulata* reveals bidirectional gametic compatibility. *Journal of Molluscan Studies* **80**, 435–443, <https://doi.org/10.1093/mollus/eyu040> (2014).
39. Pugliese, L., Casabianca, S., Perini, F., Andreoni, F. & Penna, A. A high resolution melting method for the molecular identification of the potentially toxic diatom *Pseudo-nitzschia* spp. in the Mediterranean Sea. *Scientific Reports* **7**, 4259, <https://doi.org/10.1038/s41598-017-04245-z> (2017).
40. Ratnasingham, S. & Hebert, P. D. N. BOLD: The Barcode of Life Data System ([www.barcodinglife.org](http://www.barcodinglife.org)). *Mol. Ecol. Notes* **7**, 355–364, <https://doi.org/10.1111/j.1471-8286.2006.01678.x> (2007).
41. Rychlik, W. In *PCR Primer Design Vol. 402 Methods in Molecular Biology™* (ed. Anton Yuryev) Ch. 2, 35–59 (Humana Press, 2007).
42. Corpet, F. Multiple sequence alignment with hierarchical clustering. *Nucleic Acids Res.* **16**, 10881–10890, <https://doi.org/10.1093/nar/16.22.10881> (1988).
43. Kumar, S., Stecher, G. & Tamura, K. MEGA7: Molecular Evolutionary Genetics Analysis Version 7.0 for Bigger Datasets. *Molecular Biology and Evolution* **33**, 1870–1874, <https://doi.org/10.1093/molbev/msw054> (2016).
44. Kimura, M. A Simple Method for Estimating Evolutionary Rates of Base Substitutions through Comparative Studies of Nucleotide-Sequences. *J. Mol. Evol.* **16**, 111–120, <https://doi.org/10.1007/Bf01731581> (1980).
45. Adey, W. H. & Adey, P. J. Studies on the biosystematics and ecology of the Epilithic Crustose Corallineae of the British Isles. *Brit Phycol J* **8**, 343–407, <https://doi.org/10.1080/00071617300650381> (1973).
46. Zuljevic, A. *et al.* First freshwater coralline alga and the role of local features in a major biome transition. *Scientific Reports* **6**, <https://doi.org/10.1038/srep19642> (2016).
47. Yoon, H. S., Hackett, J. D. & Bhattacharya, D. A single origin of the peridinin- and fucoxanthin-containing plastids in dinoflagellates through tertiary endosymbiosis. *Proc. Natl. Acad. Sci. USA* **99**, 11724–11729, <https://doi.org/10.1073/pnas.172234799> (2002).
48. Broom, J. E. S. *et al.* Utility of psbA and nSSU for phylogenetic reconstruction in the Corallinales based on New Zealand taxa. *Mol. Phylogenet. Evol.* **46**, 958–973, <https://doi.org/10.1016/j.ympev.2007.12.016> (2008).
49. Saunders, G. W. Applying DNA barcoding to red macroalgae: a preliminary appraisal holds promise for future applications. *Philosophical Transactions of the Royal Society B: Biological Sciences* **360**, 1879–1888, <https://doi.org/10.1098/rstb.2005.1719> (2005).

## Acknowledgements

This work, part of NIVA's project "Norway's hidden marine biodiversity: The hunt for cryptic species within the coralline algae", was funded by the Norwegian Biodiversity Information Center (Project no. 70184235). Viviana Peña acknowledges support by Universidade da Coruña (Contrato programa-Campus Industrial de Ferrol). We also acknowledge Torbjørn Brekke from Slettaa dive club for providing the Karmøy (d21) samples.

### Author Contributions

M.A. conceived and performed the molecular experiments. L.G., V.P., J.H., R.S., S.F., J.G., H.C. and E.R. collected the samples by diving. L.G., V.P., J.H., R.S., S.F., J.G., H.C., E.G., V.H., M.A. and E.R. processed the samples. L.G., V.P., R.S., J.G. and V.H. performed morphological taxonomic identification. V.P. and J.G. performed the electronic scanning. M.A. drafted the manuscript, L.G., V.P. and E.R. significantly participated to the writing of the paper. All authors read and approved the final manuscript.

### Additional Information

**Supplementary information** accompanies this paper at <https://doi.org/10.1038/s41598-018-36998-6>.

**Competing Interests:** The authors declare no competing interests.

**Publisher's note:** Springer Nature remains neutral with regard to jurisdictional claims in published maps and institutional affiliations.



**Open Access** This article is licensed under a Creative Commons Attribution 4.0 International License, which permits use, sharing, adaptation, distribution and reproduction in any medium or format, as long as you give appropriate credit to the original author(s) and the source, provide a link to the Creative Commons license, and indicate if changes were made. The images or other third party material in this article are included in the article's Creative Commons license, unless indicated otherwise in a credit line to the material. If material is not included in the article's Creative Commons license and your intended use is not permitted by statutory regulation or exceeds the permitted use, you will need to obtain permission directly from the copyright holder. To view a copy of this license, visit <http://creativecommons.org/licenses/by/4.0/>.

© The Author(s) 2019