

2018-03-12

Implication of Major Adverse Postoperative Events and Myocardial Injury on Disability and Survival: A Planned Subanalysis of the ENIGMA-II Trial.

Beattie, WS

<http://hdl.handle.net/10026.1/11399>

10.1213/ANE.0000000000003310

Anesth Analg

Ovid Technologies (Wolters Kluwer Health)

All content in PEARL is protected by copyright law. Author manuscripts are made available in accordance with publisher policies. Please cite only the published version using the details provided on the item record or document. In the absence of an open licence (e.g. Creative Commons), permissions for further reuse of content should be sought from the publisher or author.

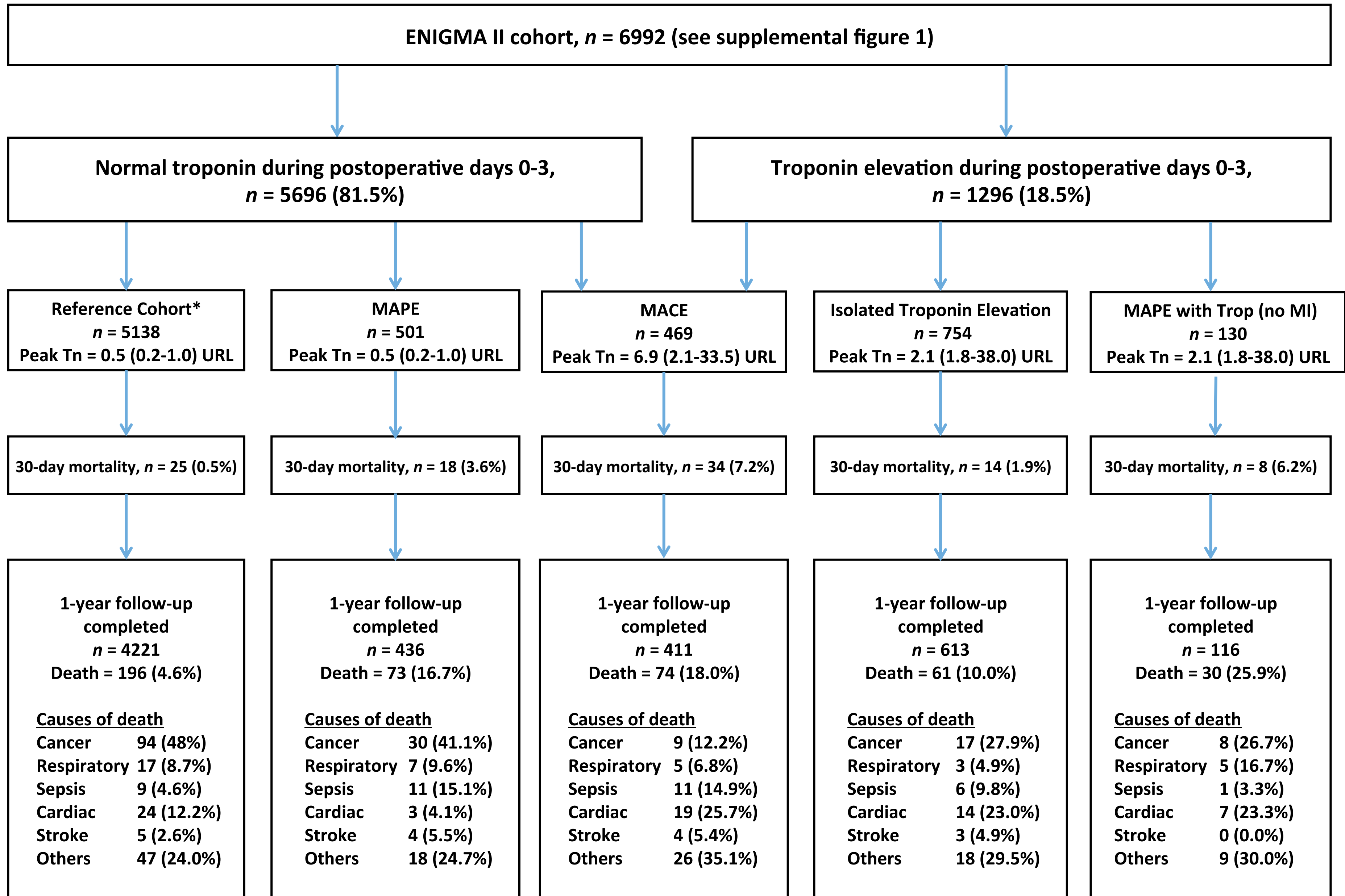
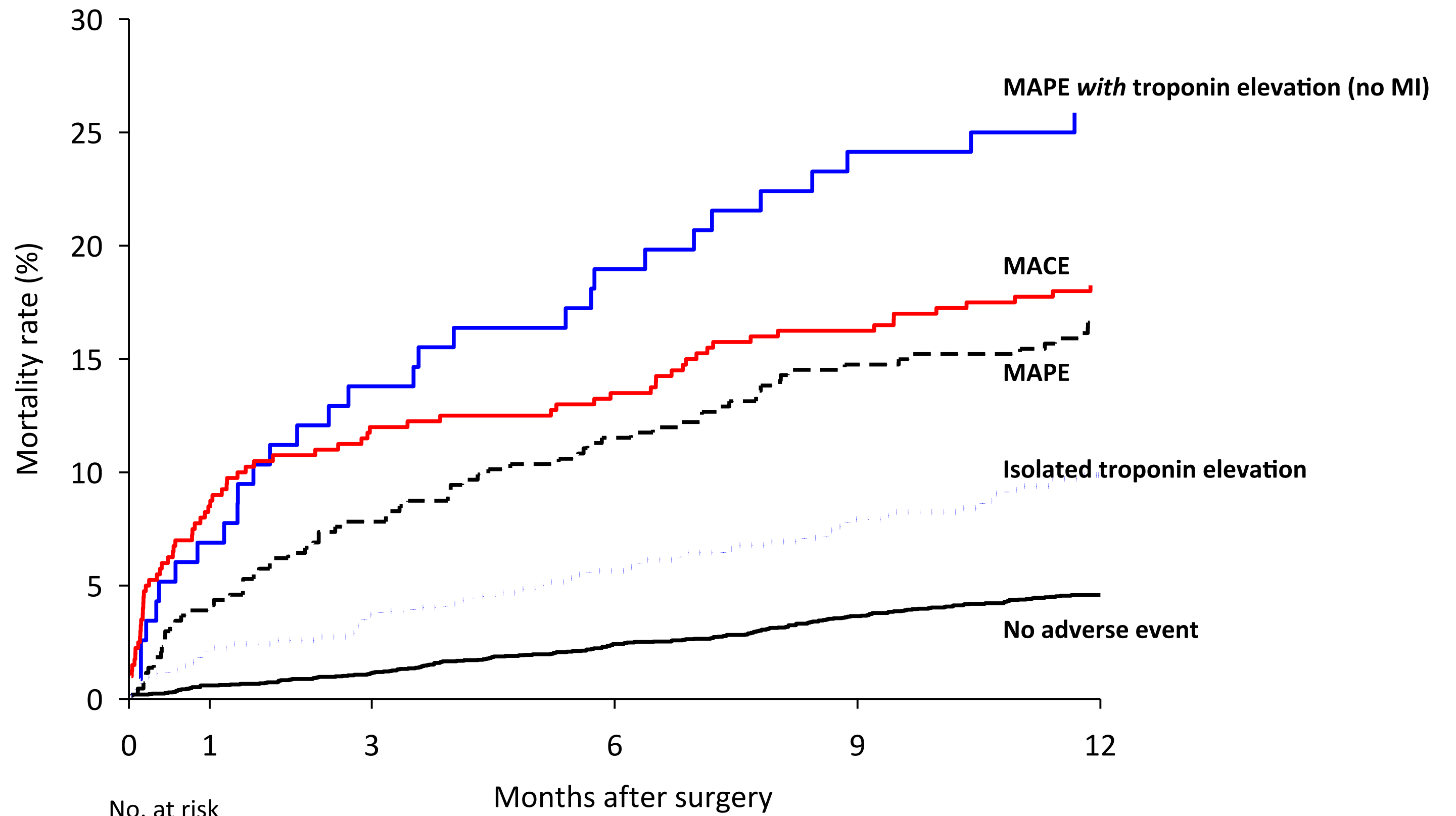


Figure 1



	No. at risk					
	0	1	3	6	9	12
No adverse event	4221	4196	4140	4029	3864	3668
Isolated troponin elevation	436	422	397	360	307	246
MACE	411	377	329	274	208	134
MAPE without troponin elevation	613	595	558	505	438	365
MAPE with troponin elevation	116	108	92	70	42	12

Figure 2