

2012

Emancipating the Many: A practice led investigation into emergent paradigms of immediate political action

Fiel, Wolfgang

<http://hdl.handle.net/10026.1/1043>

<http://dx.doi.org/10.24382/3699>

University of Plymouth

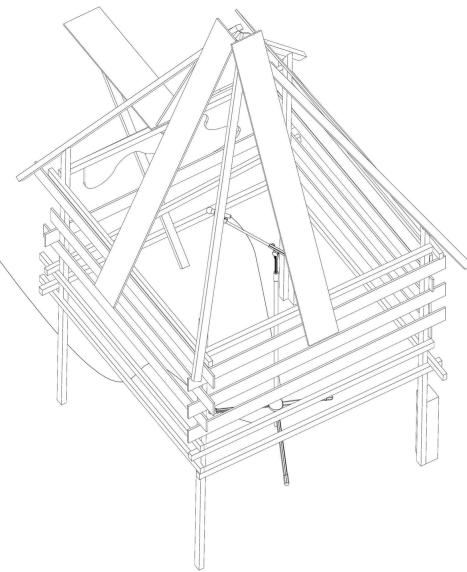
All content in PEARL is protected by copyright law. Author manuscripts are made available in accordance with publisher policies. Please cite only the published version using the details provided on the item record or document. In the absence of an open licence (e.g. Creative Commons), permissions for further reuse of content should be sought from the publisher or author.

tat ort: Berlinger, Fiel
Achsiedlung: Wohnen in der Raumstadt
Projektdiagramm
Bregenz, März 2008

Die Pavillons sind im Rahmen eines Workshops im Westend am Samstag und Sonntag den 8. und 9. März 2008 entstanden.

Wohnungsverstärkung

Aussenaufnahme



43

Pavillon 2

Pavillon 3

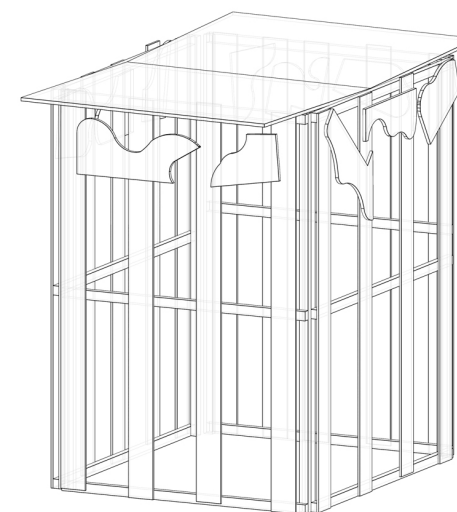
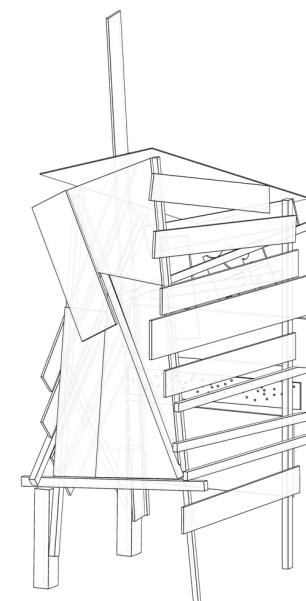
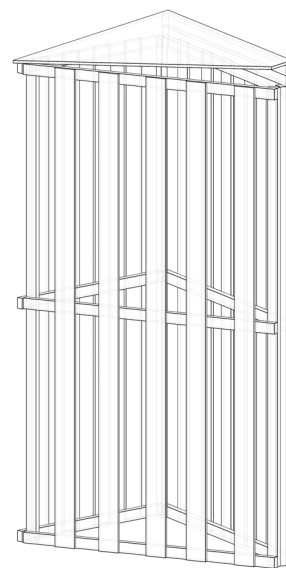
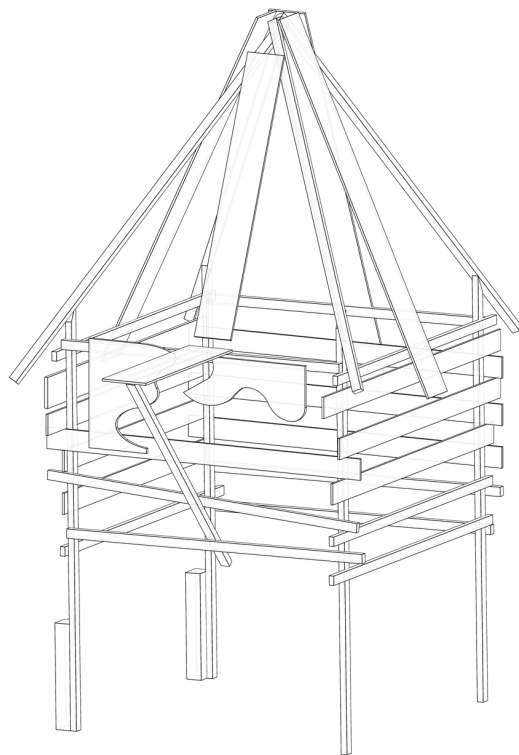
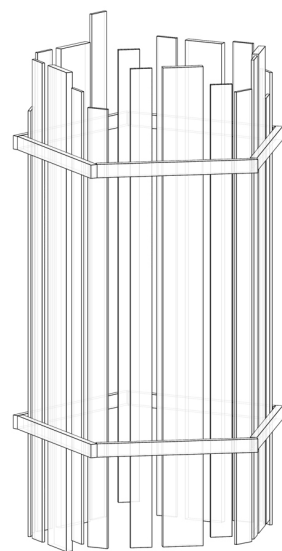
Pavillon 1

Pavillon 4

Pavillon 5

Atrium

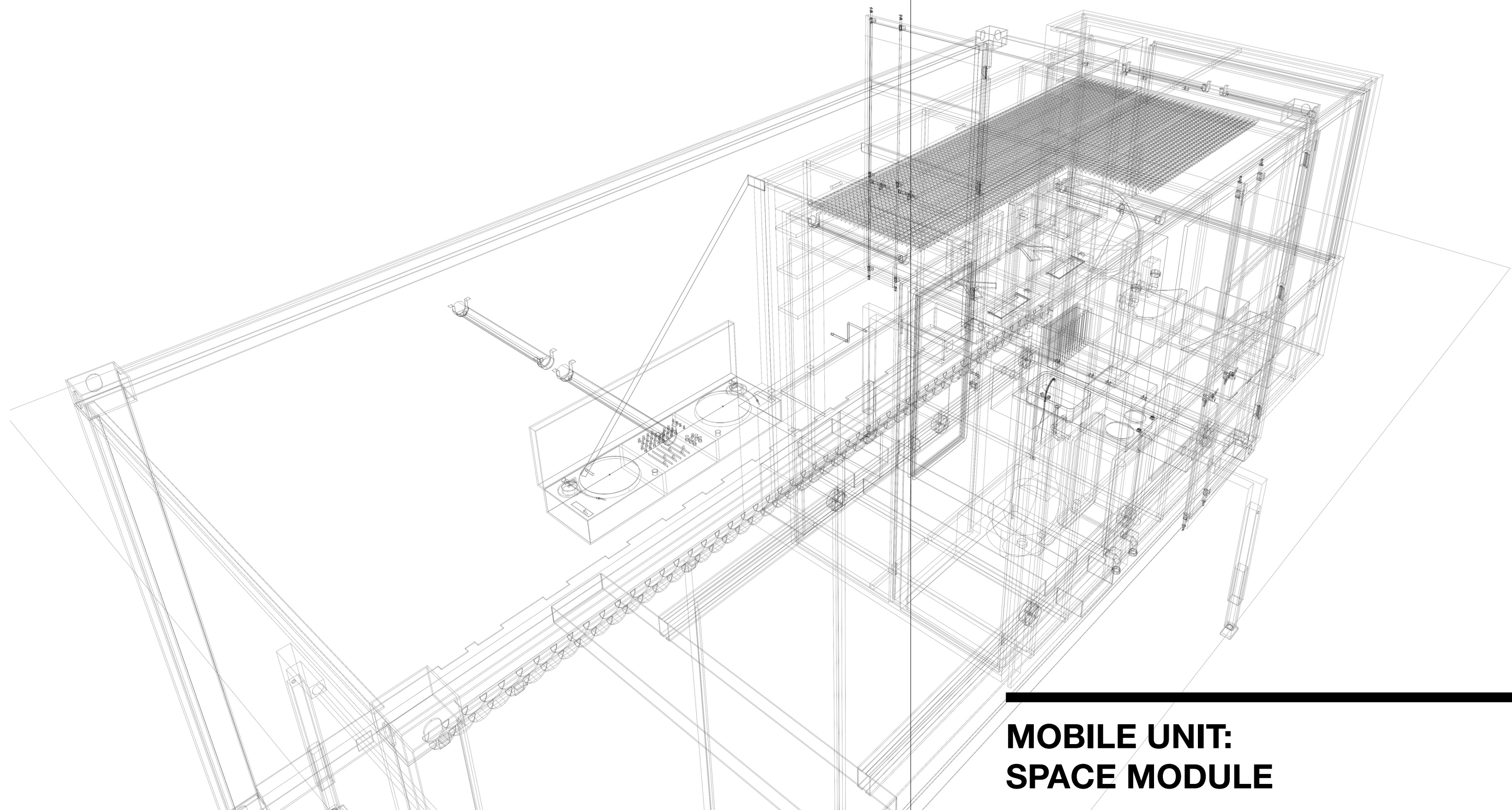
**INHABITING THE SPATIAL CITY:
SCHEME OF INTERVENTION**



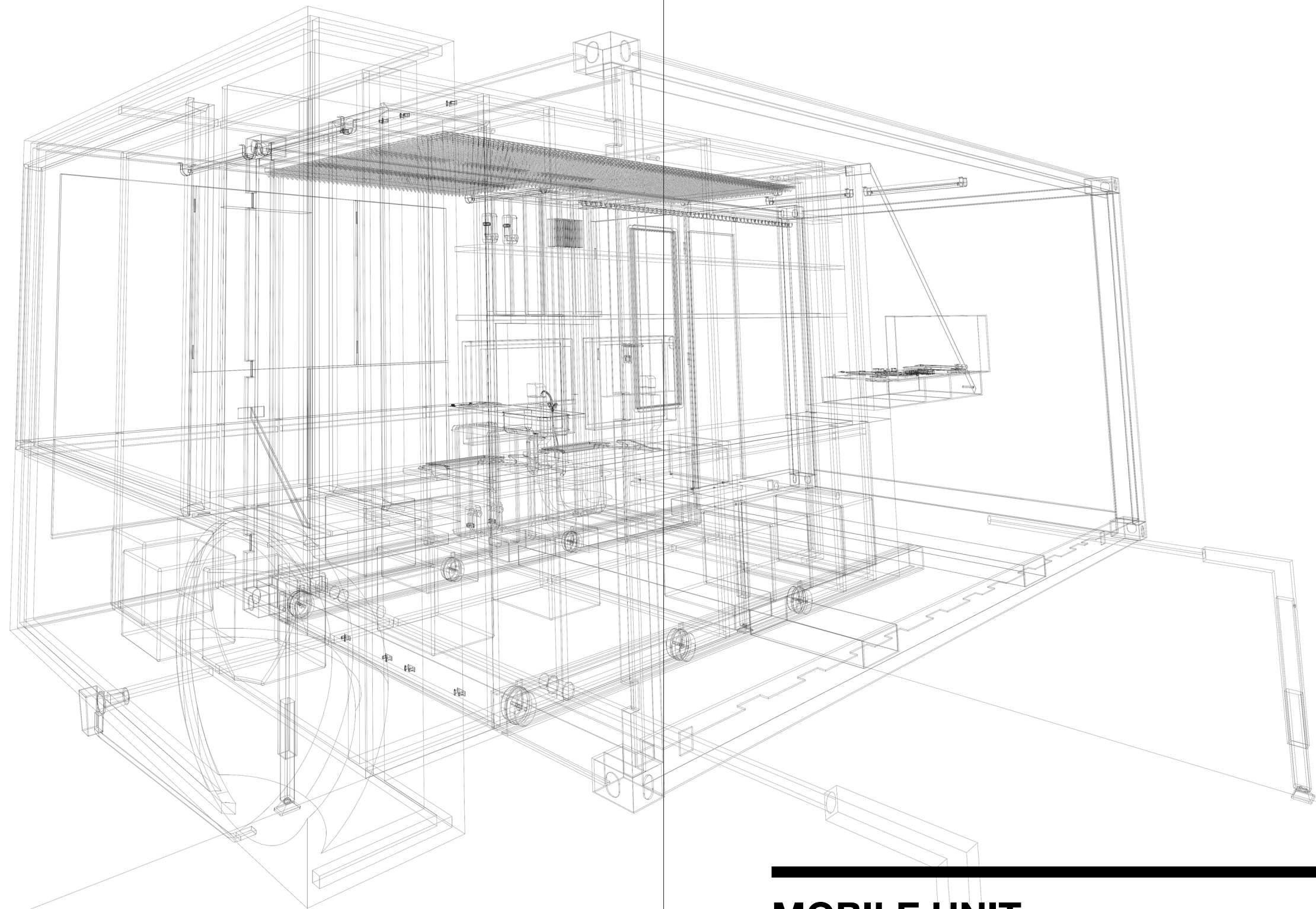
**INHABITING THE SPATIAL CITY:
PAVILIONS, ISOMETRIC DRAWING**



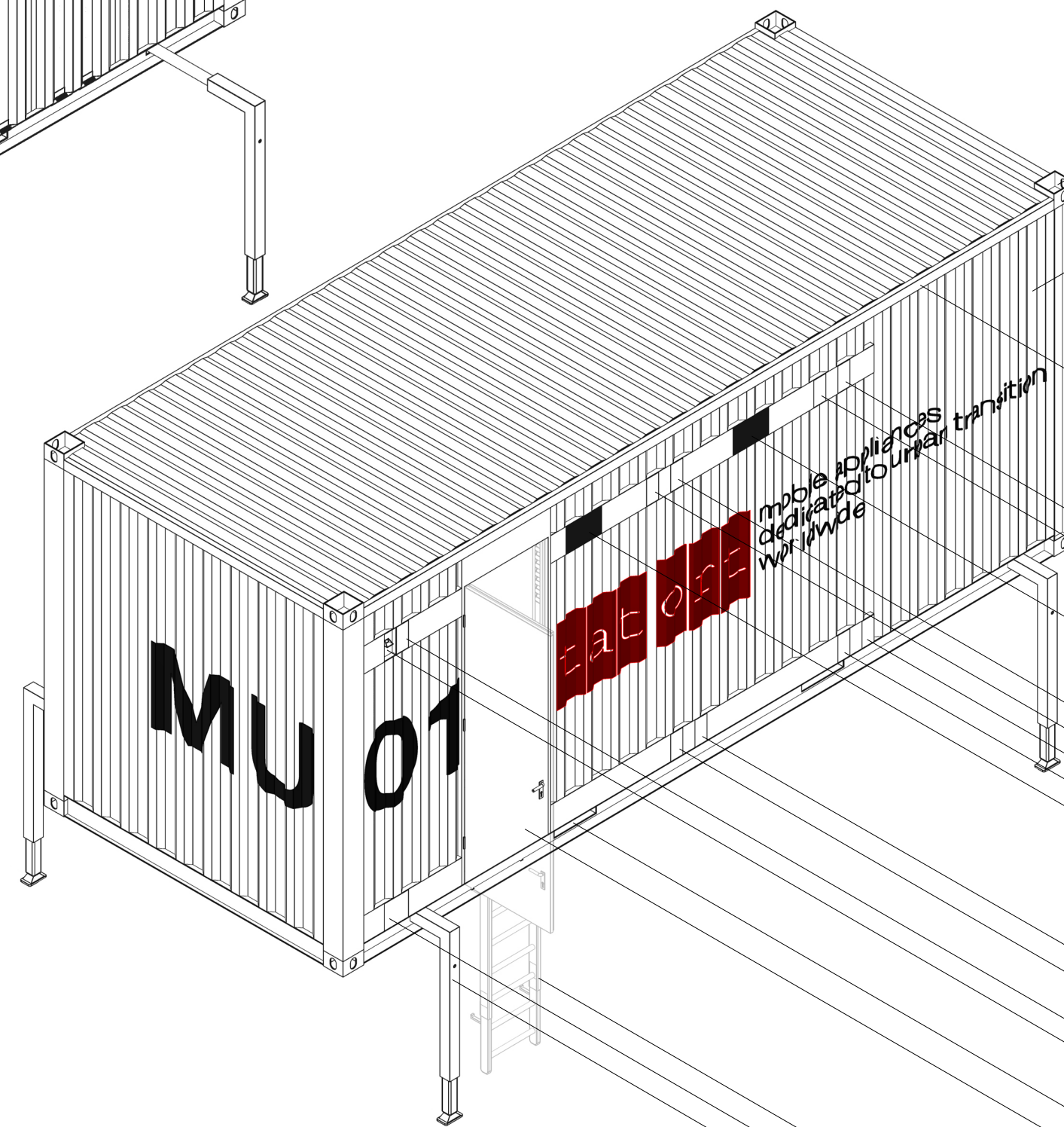
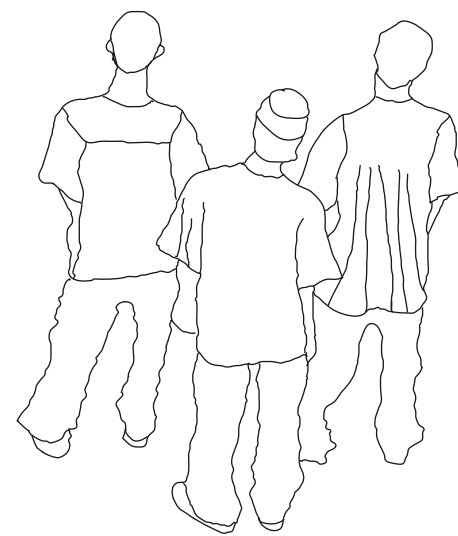
MOBILE UNIT: ROAD TRANSPORT



**MOBILE UNIT:
SPACE MODULE**



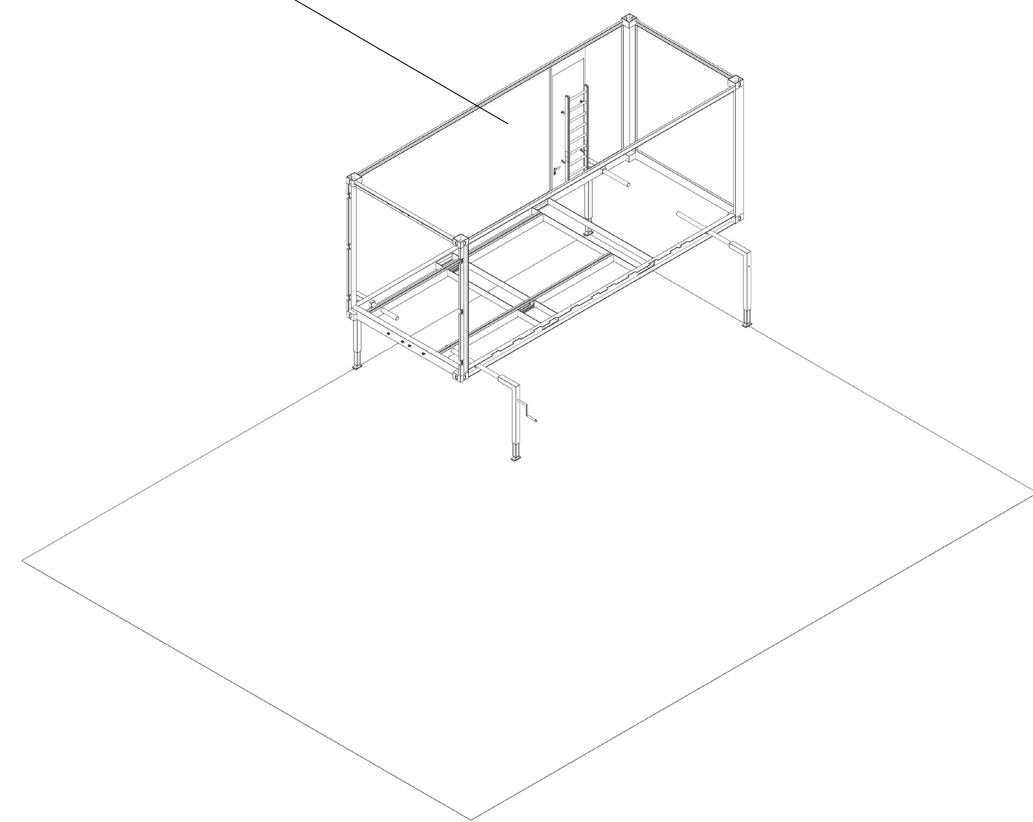
**MOBILE UNIT:
SPACE MODULE**



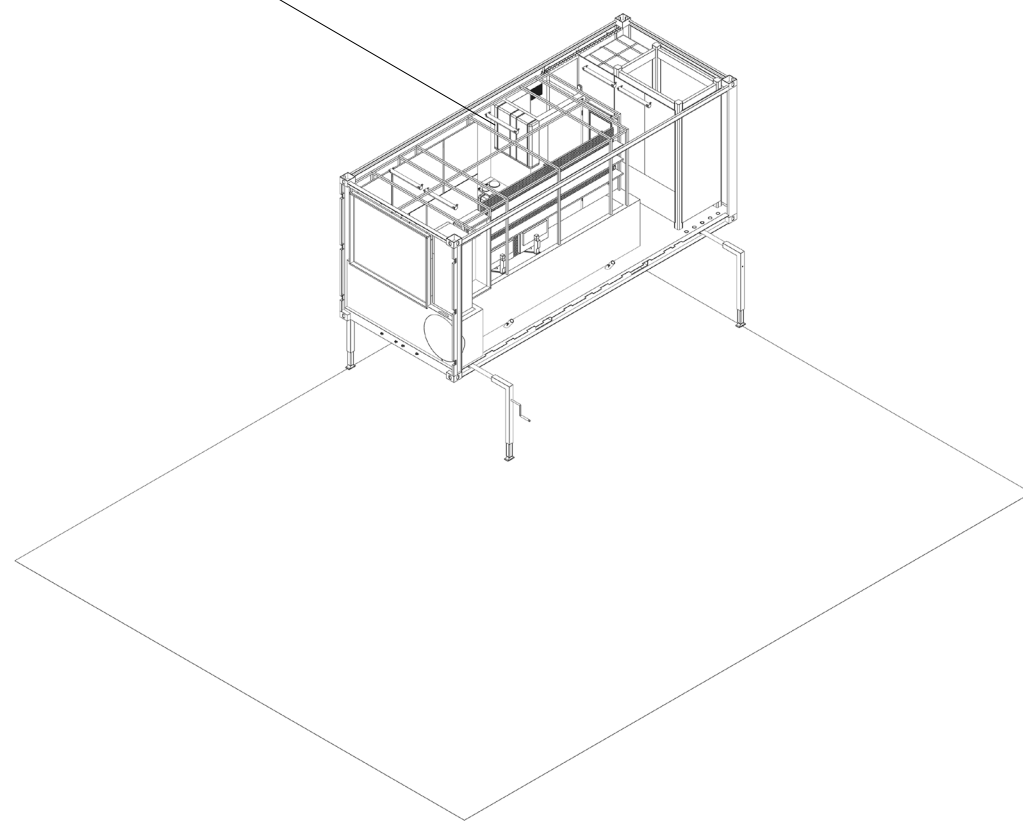
- Corner fitting/air lift
- Side panel, openable
- Container-chassis
- Drinkable water refill for space module deployed
- Toilet water refill for space module deployed
- Ventilation grill for space module deployed
- Drinkable water refill for space module in transportation lock
- Toilet water refill for space module in transportation lock
- Wastewater discharge for space module deployed
- Toilet wastewater discharge for space module deployed
- Ventilation grill for space module in transportation lock
- Wastewater discharge for space module in transportation lock
- Toilet wastewater discharge for space module in transportation lock
- Gas refill
- Exhaust of gas generator
- Forklift pocket
- Door to the container
- Ladder for container entrance
- Sockets for external power supply
- Landing gear

MOBILE UNIT: CONTAINER SHELL

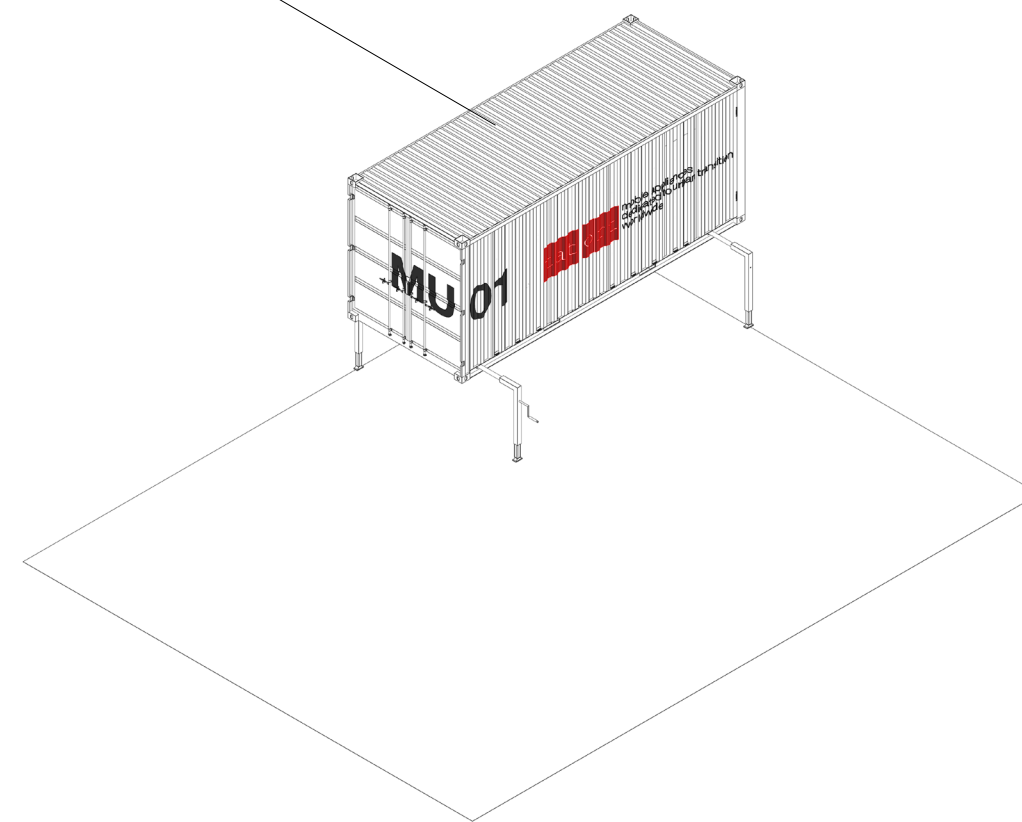
Container chassis



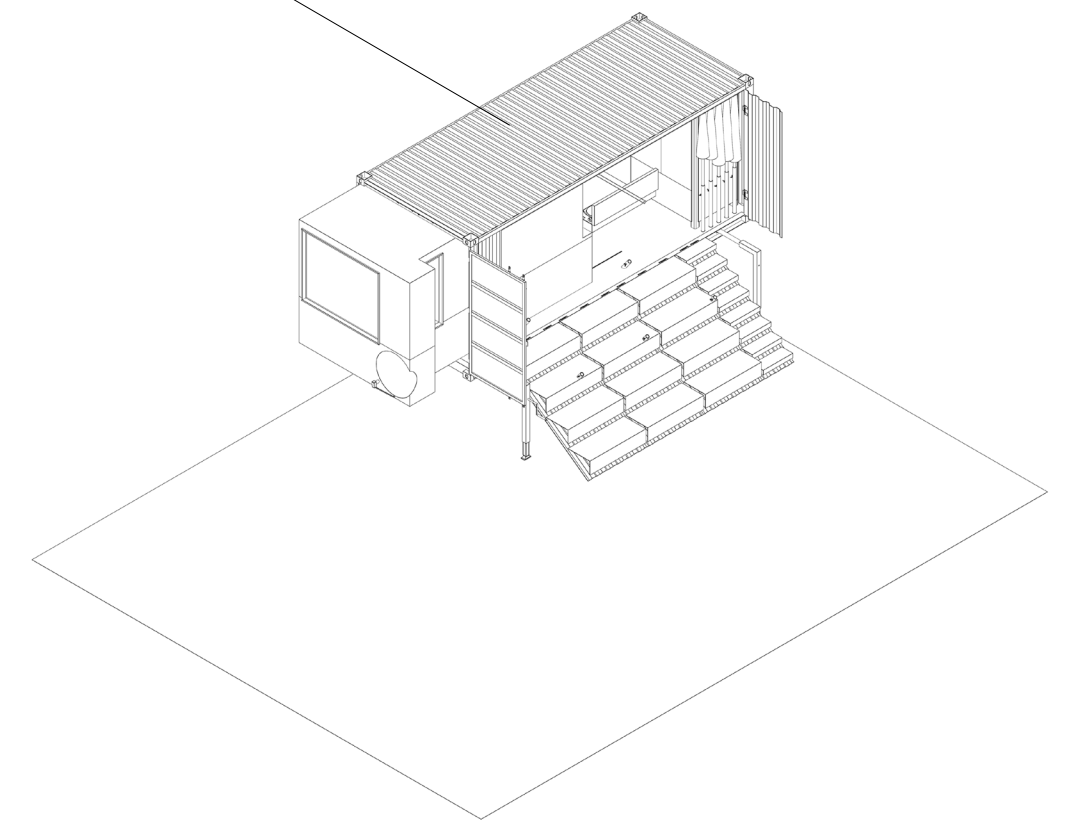
Space module, furniture, appliances, and computer interface



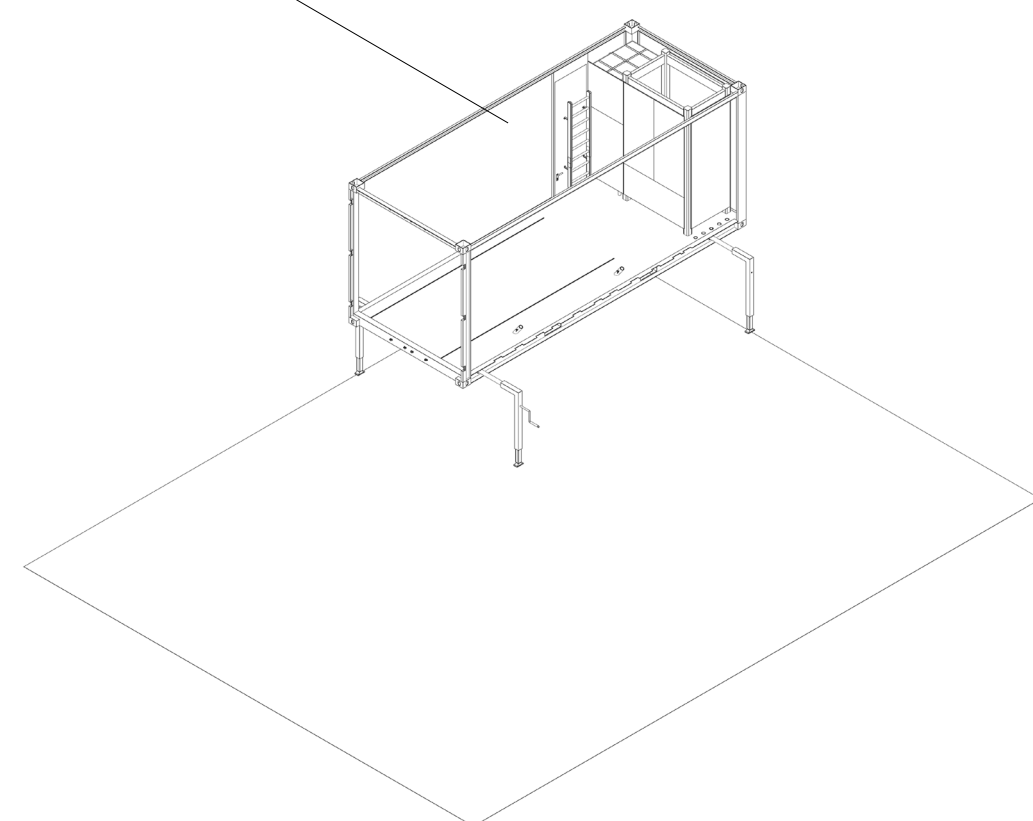
Container shell



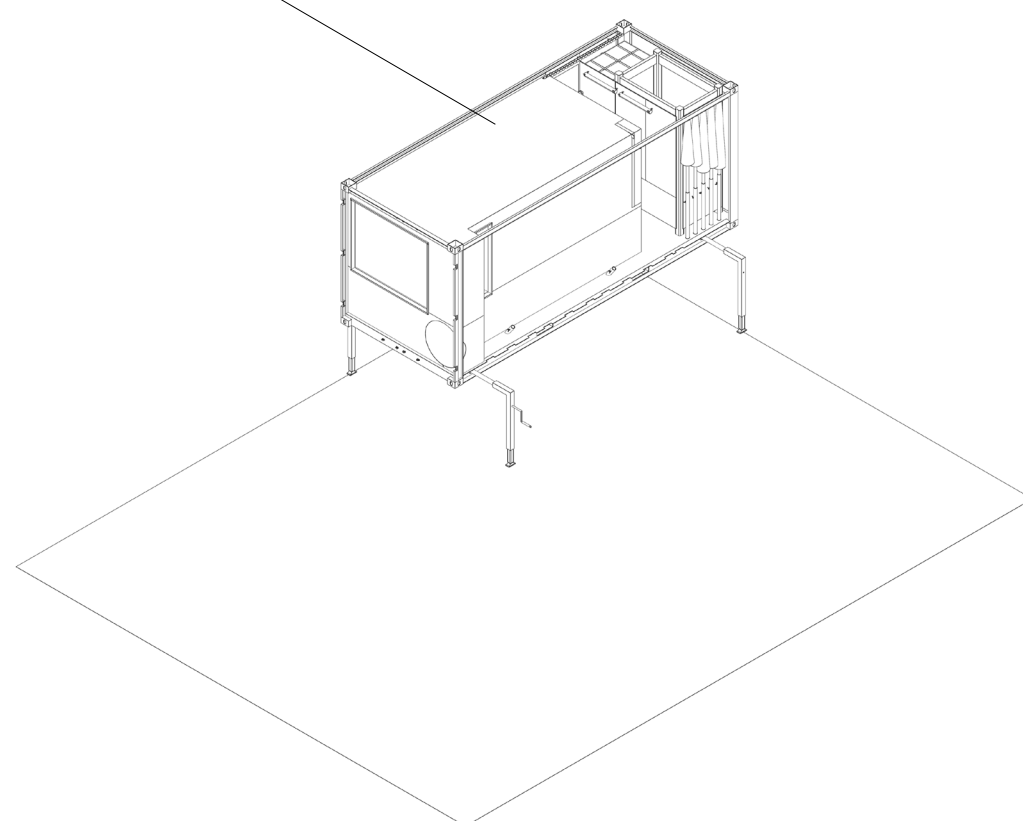
Sitting stairs and flightcase unfolded



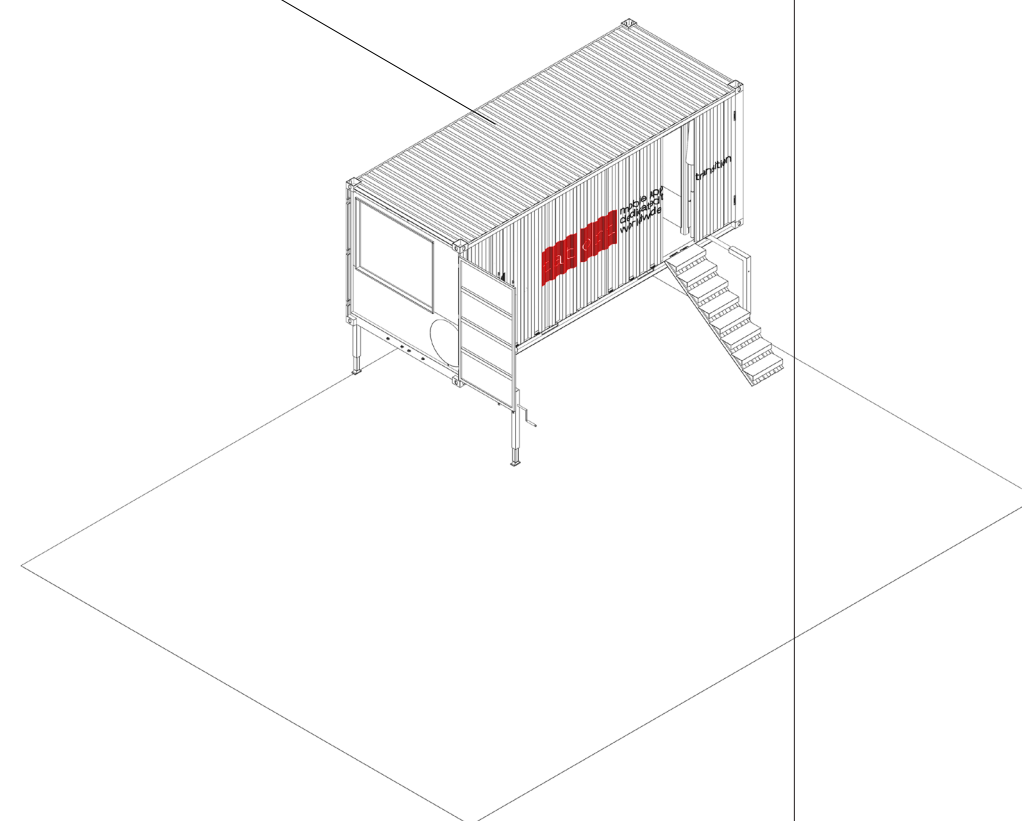
Electrical infrastructure and milling machine



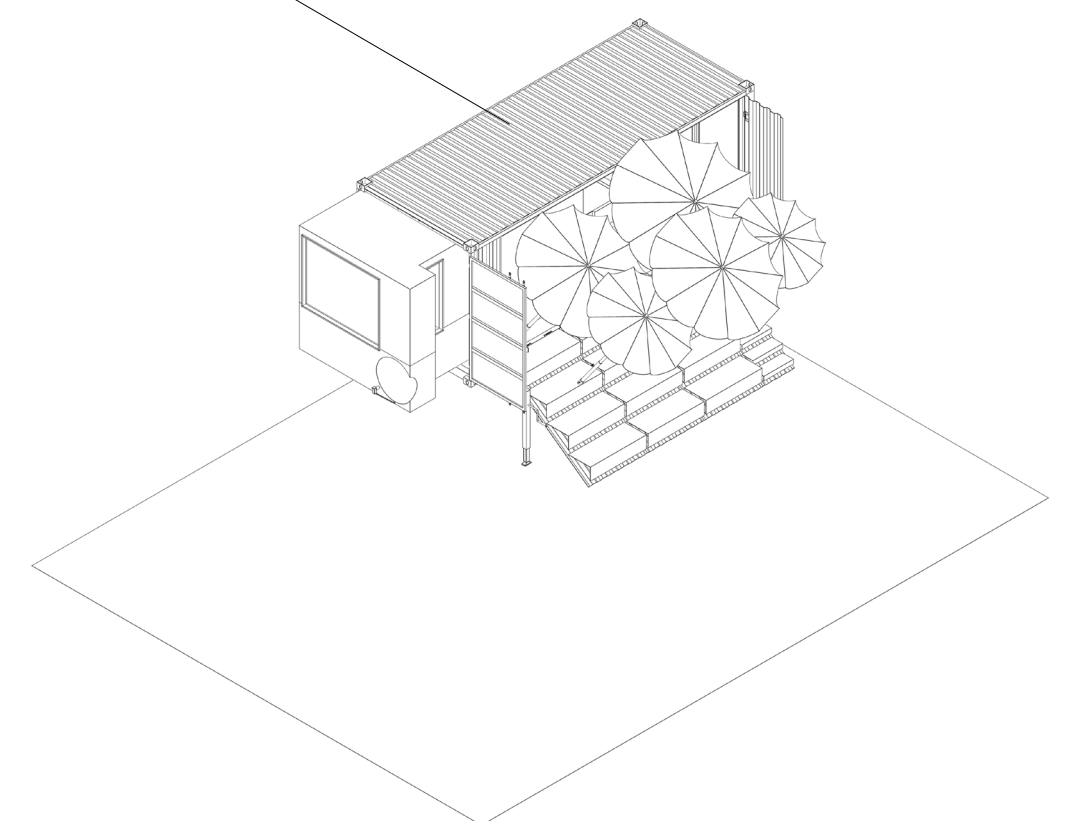
Container fully equipped, space module locked



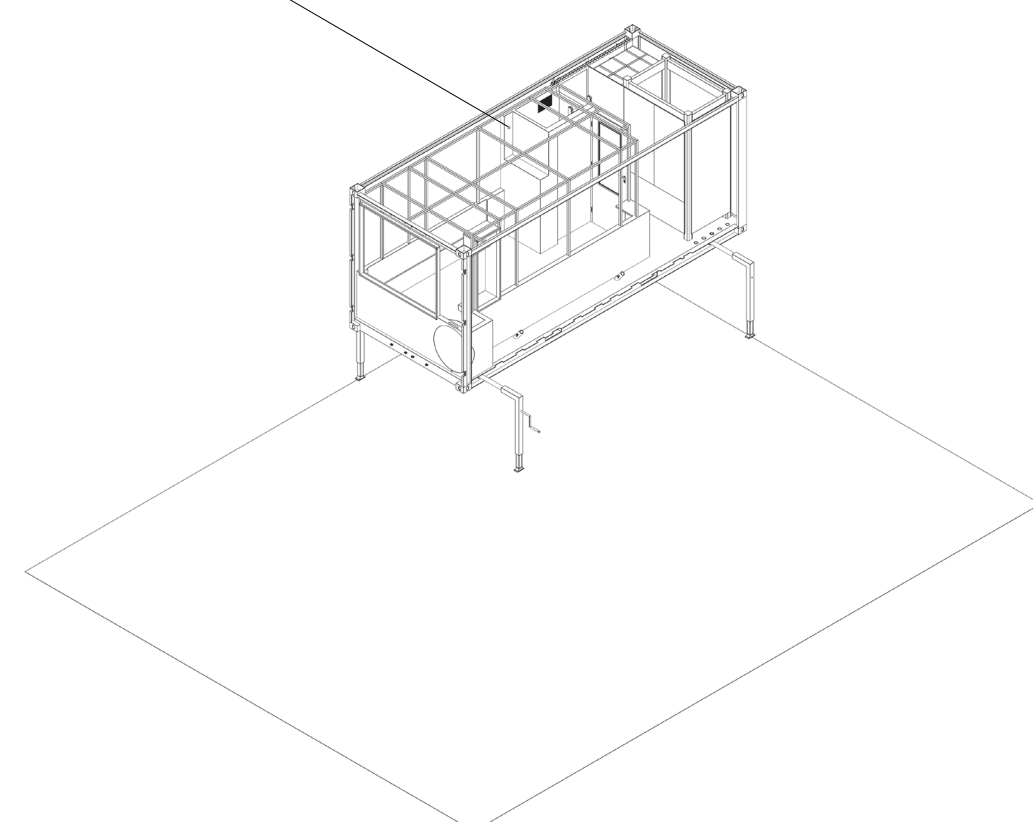
Front doors open and staircase unfolded



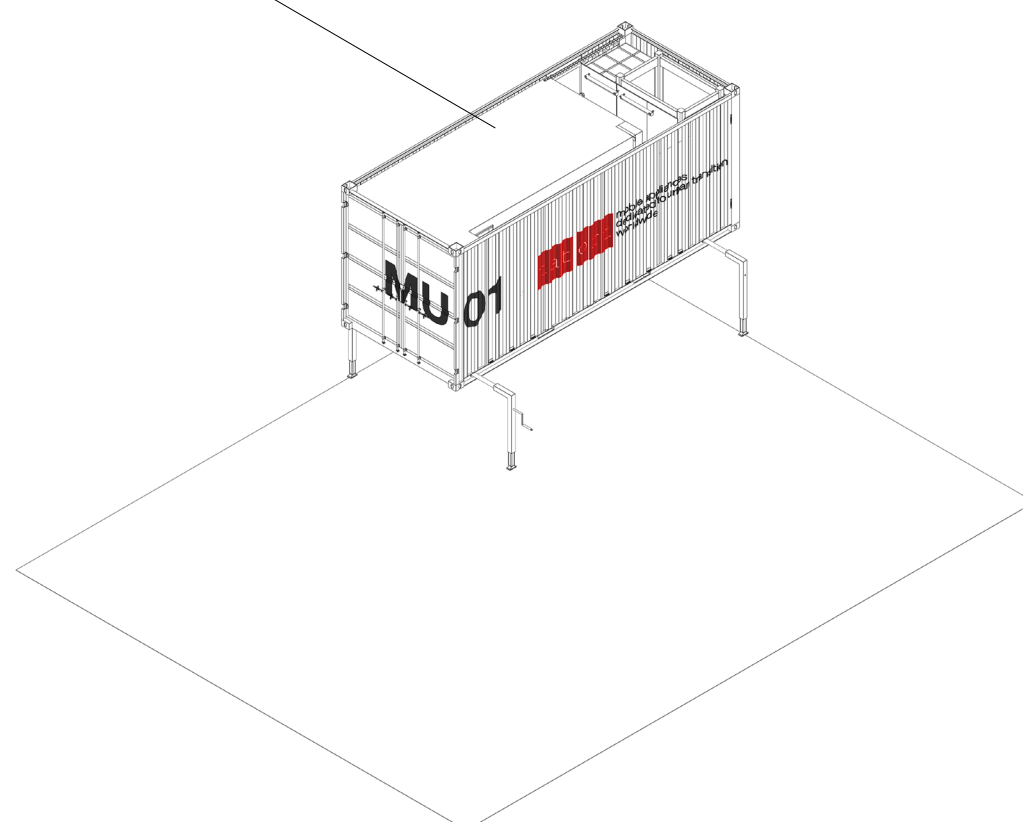
Mobile unit fully operational



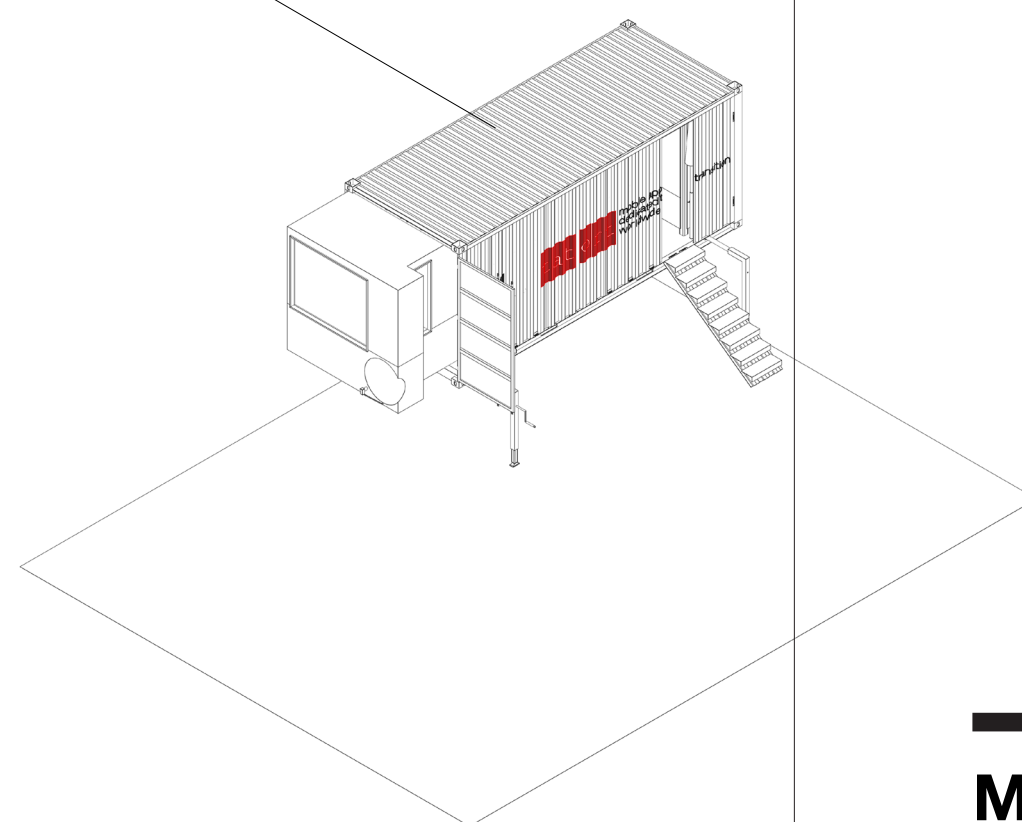
Space module, structural components



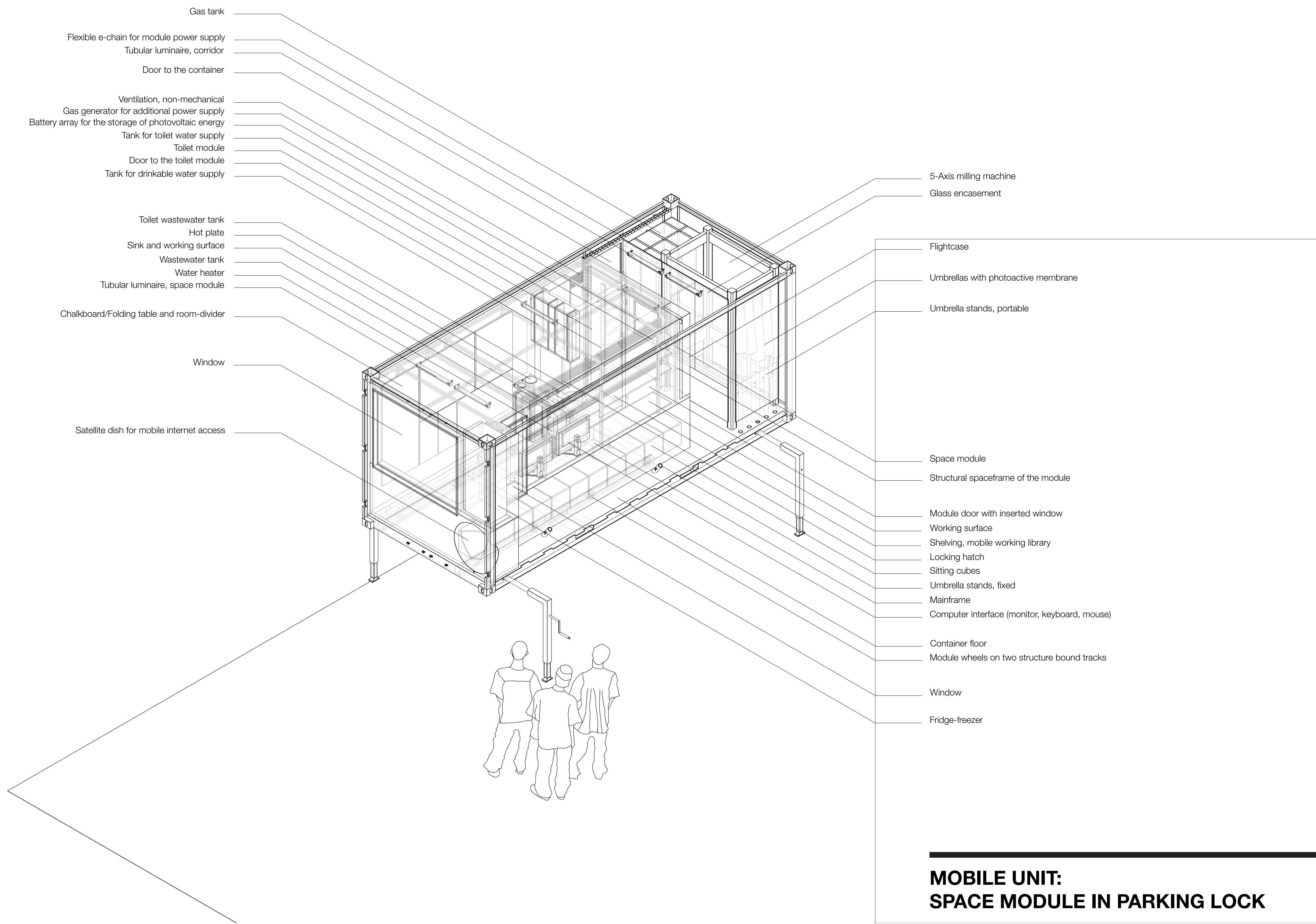
Container side panels

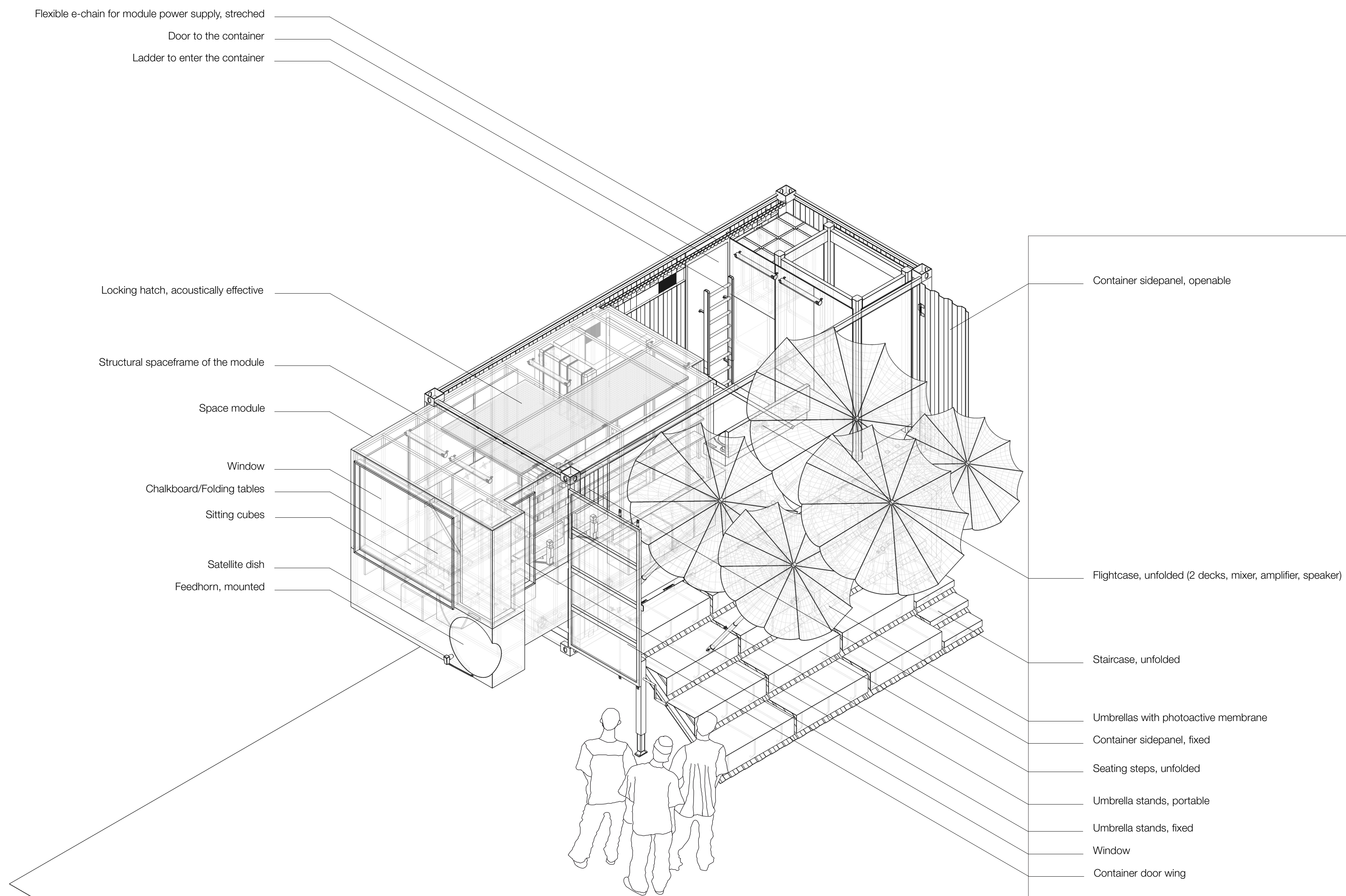


Space module deployed

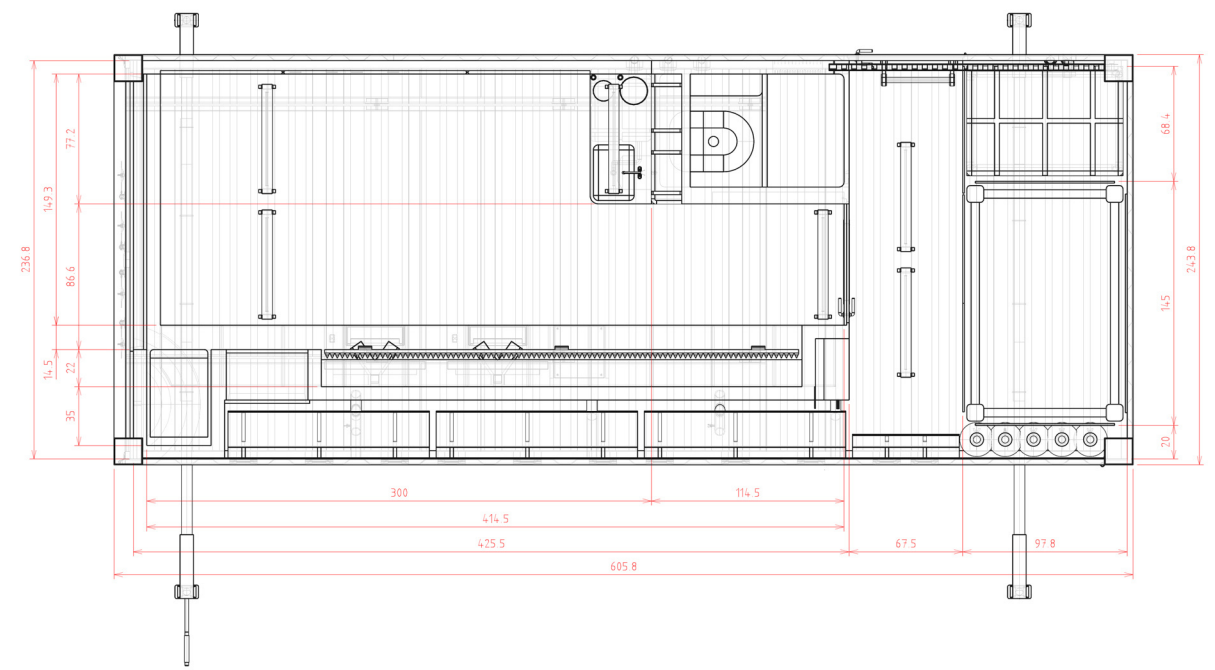


MOBILE UNIT: UNFOLDING STAGES

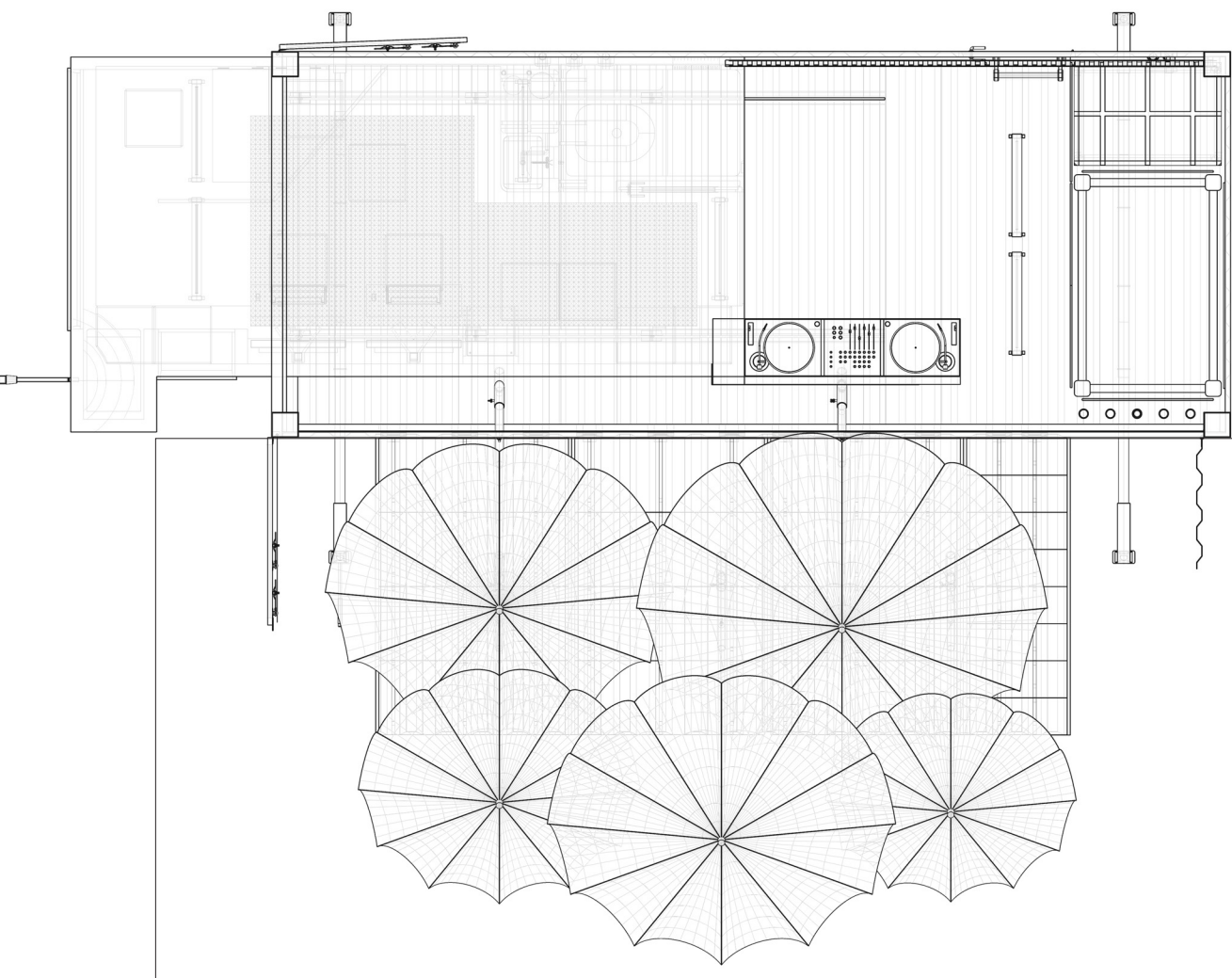




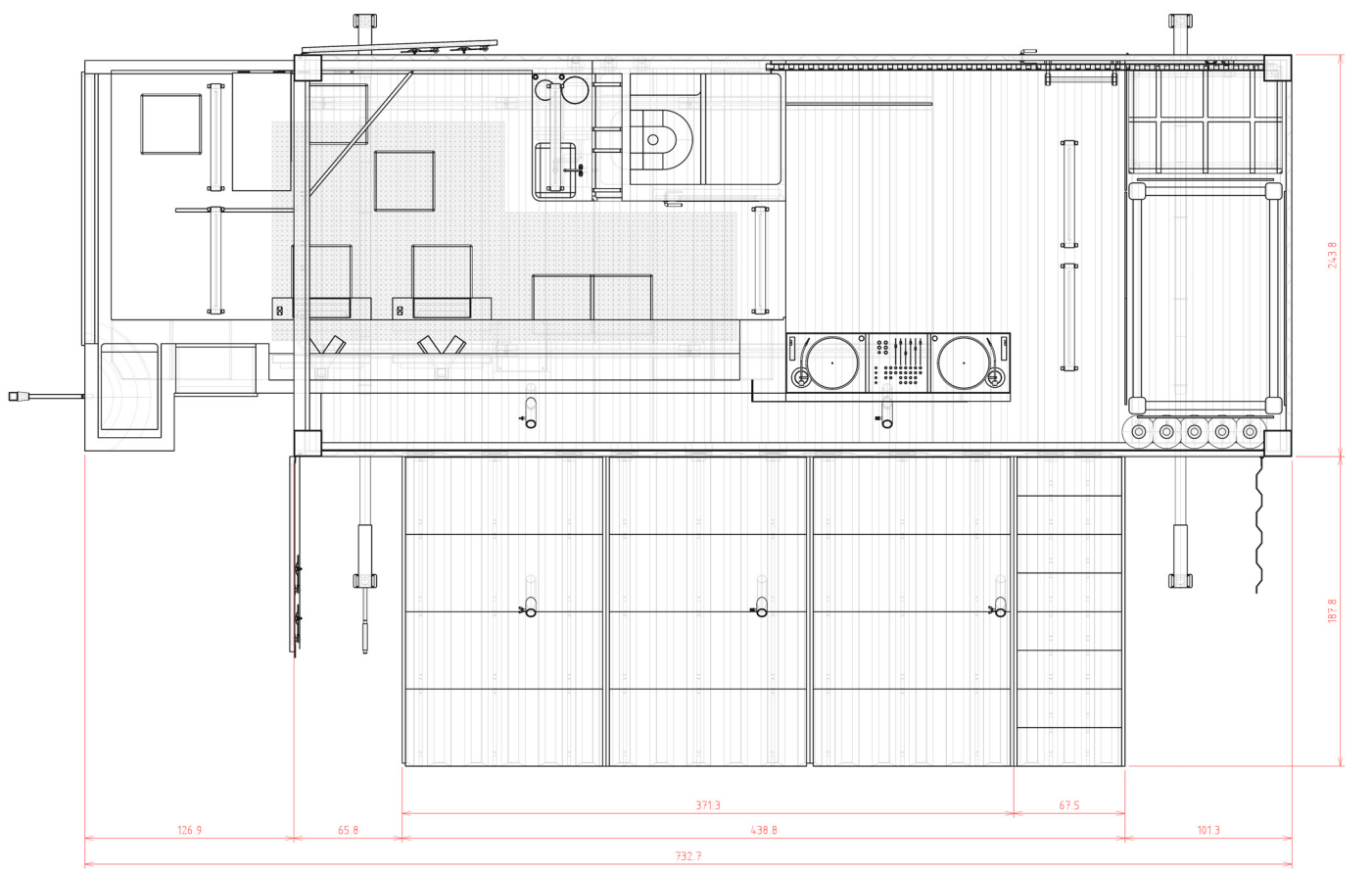
Space module in parking lock



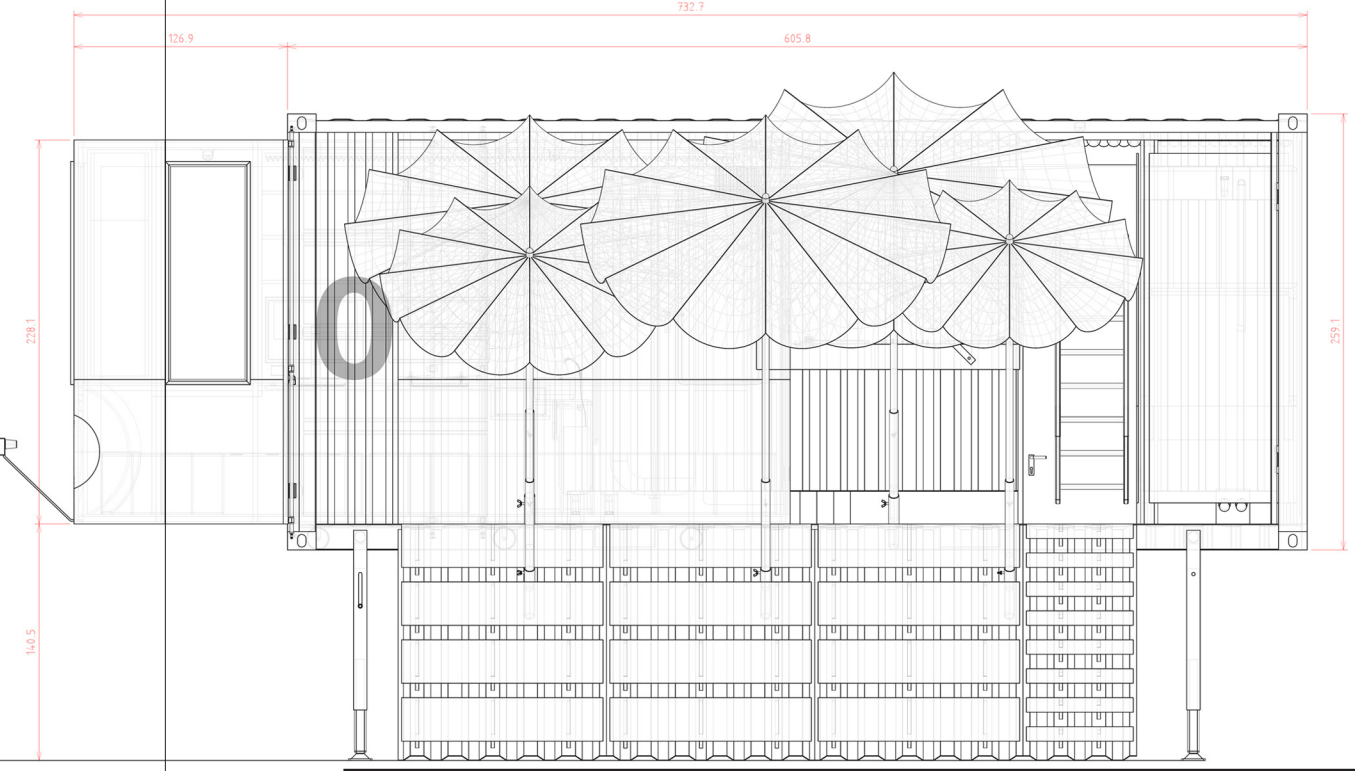
Mobile Unit fully operational



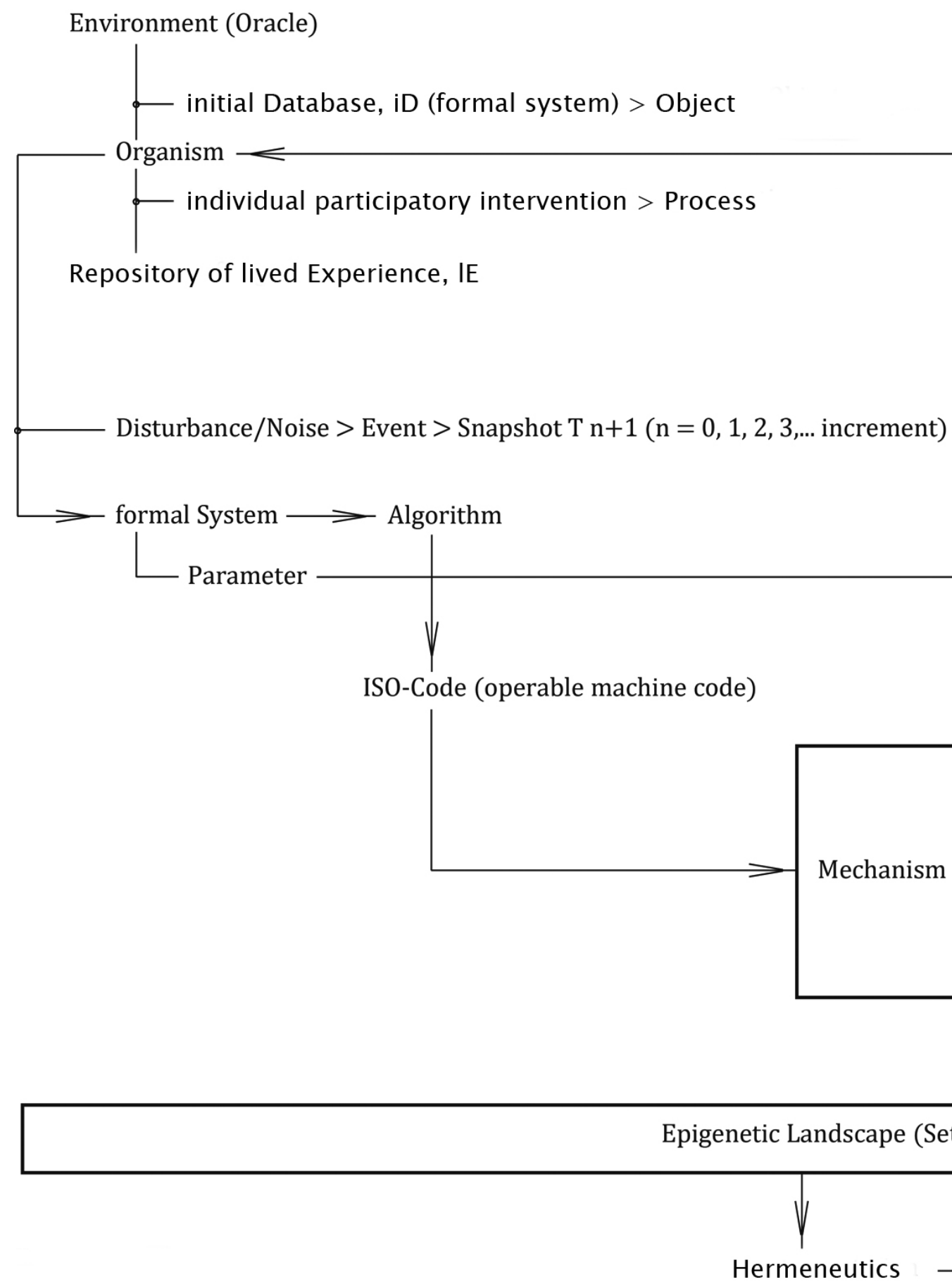
Space module deployed, sitting stairs unfolded



Mobile Unit, front elevation



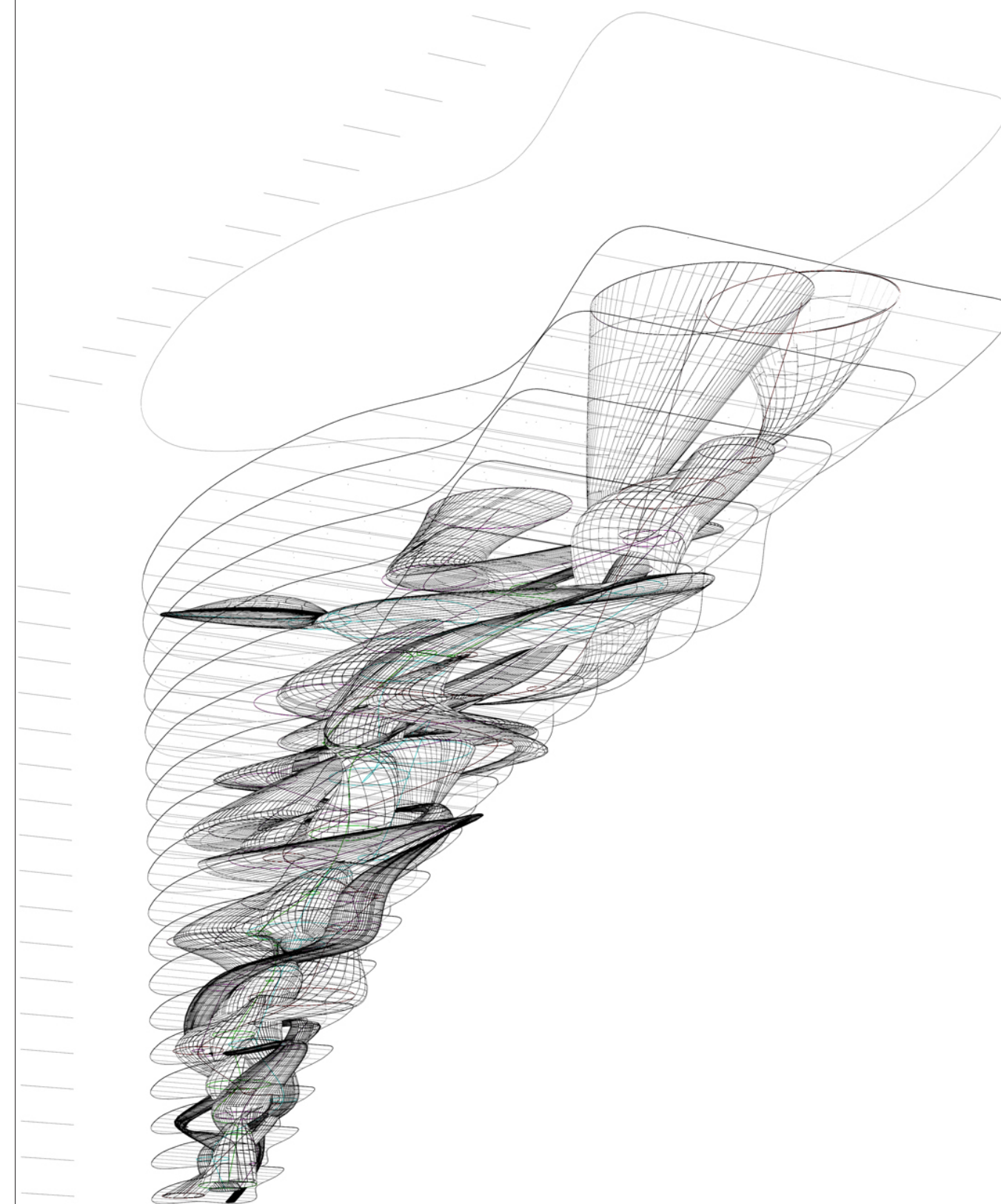
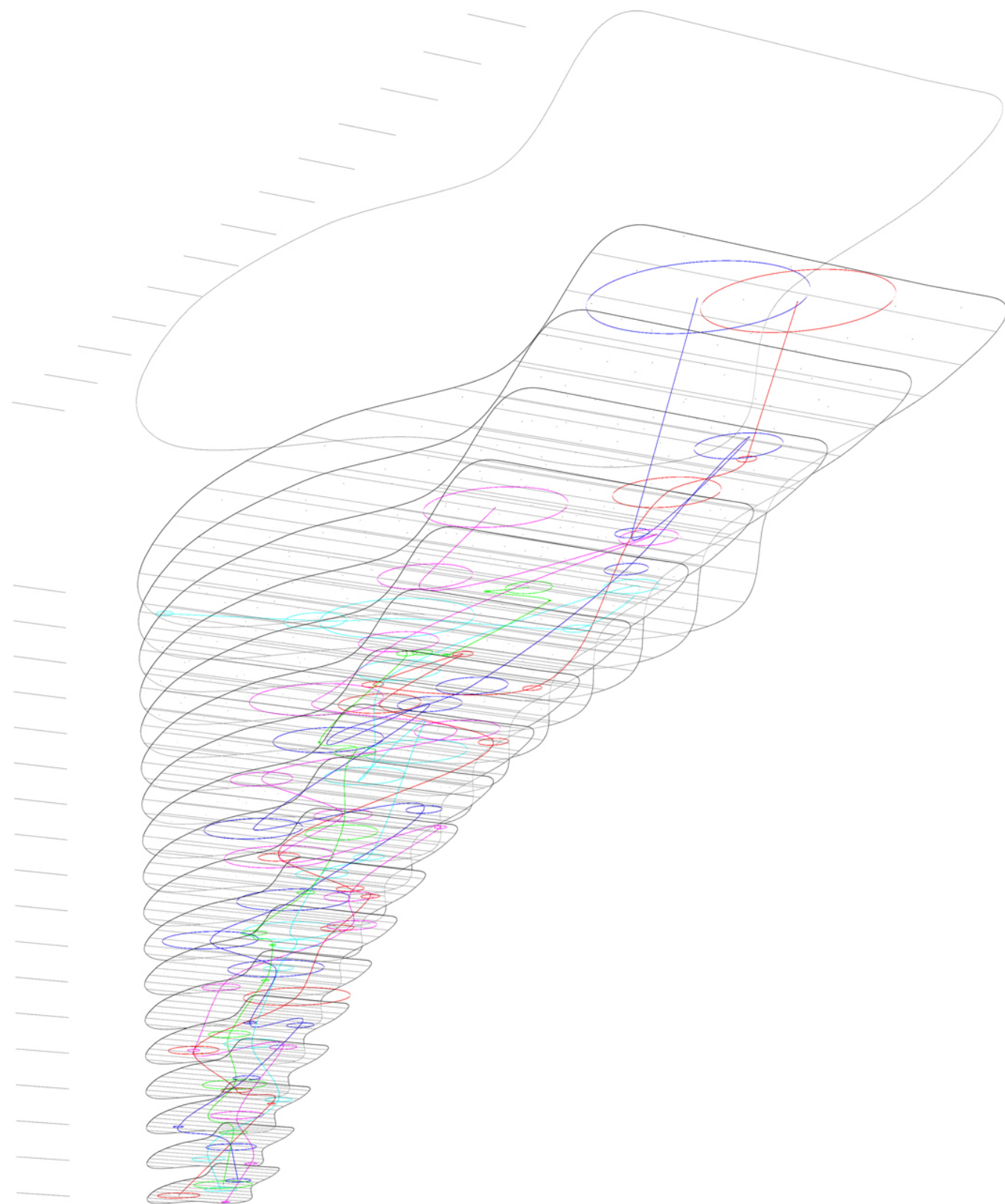
**MOBILE UNIT:
FLOOR PLANS AND ELEVATION**



Lexicon of Urban Life

A	B	C	D	E	F
G	H	I	J	K	L
M	N	O	P	Q	R
S	T	U	V	W	X
				Y	Z

**MOBILE UNIT:
SYSTEM ARCHITECTURE: FLOW CHART**



**MOBILE UNIT:
DATABASE**