

2017-11-14

Intrinsic and extrinsic factors drive ontogeny of early-life at-sea behaviour in a marine top predator

Carter, MID

<http://hdl.handle.net/10026.1/10134>

10.1038/s41598-017-15859-8

Scientific Reports

Nature Publishing Group

All content in PEARL is protected by copyright law. Author manuscripts are made available in accordance with publisher policies. Please cite only the published version using the details provided on the item record or document. In the absence of an open licence (e.g. Creative Commons), permissions for further reuse of content should be sought from the publisher or author.

1 **Intrinsic and extrinsic factors drive ontogeny of**
2 **early-life at-sea behaviour in a marine top**
3 **predator**

4 **Matt I. D. Carter^{1,*}; Deborah J. F. Russell^{2,3,+}; Clare B. Embling^{1,+}; Clint J.**
5 **Blight²; David Thompson²; Philip J. Hosegood¹; Kimberley A. Bennett⁴**

6
7 ¹School of Biological & Marine Sciences, Plymouth University, Plymouth, PL4 8AA, UK

8 ²Sea Mammal Research Unit, Scottish Oceans Institute, University of St Andrews, St Andrews, KY16 8LB, UK

9 ³Centre for Research into Ecological & Environmental Modelling, University of St Andrews, St Andrews,
10 KY16 9LZ, UK

11 ⁴School of Science, Engineering & Technology, Abertay University, Dundee, DD1 1HG, UK

12
13 [*matthew.carter@plymouth.ac.uk](mailto:matthew.carter@plymouth.ac.uk)

14 ⁺these authors contributed equally to this work

15 **ABSTRACT**

16 Young animals must learn to forage effectively to survive the transition from parental provisioning
17 to independent feeding. Rapid development of successful foraging strategies is particularly
18 important for capital breeders that do not receive parental guidance after weaning. The intrinsic
19 and extrinsic drivers of variation in ontogeny of foraging are poorly understood for many species.
20 Grey seals (*Halichoerus grypus*) are typical capital breeders; pups are abandoned on the natal site
21 after a brief suckling phase, and must develop foraging skills without external input. We collected
22 location and dive data from recently-weaned grey seal pups from two regions of the United
23 Kingdom (the North Sea and the Celtic and Irish Seas) using animal-borne telemetry devices during
24 their first months of independence at sea. Dive duration, depth, bottom-time, and benthic diving
25 increased over the first 40 days. The shape and magnitude of changes differed between regions.
26 Females consistently had longer bottom-times, and in the Celtic and Irish Seas they used shallower
27 water than males. Regional sex differences suggest that extrinsic factors, such as water depth,
28 contribute to behavioural sexual segregation. We recommend that conservation strategies consider
29 movements of young naïve animals in addition to those of adults to account for developmental
30 behavioural changes.

31 Introduction

32 Transition from dependence on parental provisioning to independent feeding is a critical time in the life of
33 all animal species that receive parental care. For slow-maturing species, the first months of independent
34 life are crucial in determining survival to recruitment, and therefore sustaining stable populations¹⁻³.
35 Survival depends on developing the ability to successfully find, compete for, capture and handle food
36 resources whilst avoiding predation^{4,5}. Juvenile behaviour, and its relationship with the development of
37 successful feeding strategies, is receiving increasing research interest given the influence of early life
38 survival on population dynamics^{1,3,6-9}. Unpicking the intrinsic and extrinsic factors that affect the
39 development of foraging skills is key to understanding population trajectories and identifying critical
40 habitat for species during their most vulnerable life stages.

41 For air-breathing marine diving predators, such as marine mammals, sea turtles, and seabirds, the
42 challenge of developing effective foraging strategies is particularly acute. Individuals must locate and
43 exploit patchily-distributed prey resources in a dynamic environment, within the physiological constraints
44 of breath-hold diving¹⁰. Studying ontogeny in wild marine predators is problematic, not least because a
45 considerable proportion of their lives is spent at sea, often underwater, where direct observations of
46 behaviour are difficult or impossible⁷. Acoustic, satellite and Global System for Mobile communication
47 (GSM) telemetry devices have allowed ecologists to track diving predators at sea, building an increasingly
48 clear picture of their movements and dive behaviour^{11,12}. Logistical and practical constraints, such as high
49 mortality rates and low re-encounter probability, mean that behavioural datasets for young animals are
50 sparse¹³. Pinnipeds and seabirds are dependent on terrestrial habitat for reproduction, and young animals
51 are large enough to carry biologging devices, therefore providing tractable opportunities to record location
52 and behavioural data spanning the initial months of independence¹³.

53 Many pinniped species, including otariids and walruses (odobenids), are income breeders¹⁴: they have
54 protracted dependency periods, during which the young learn diving and foraging skills before weaning^{15,16}.
55 The nursing period may last many months, or even years¹⁴. Other pinnipeds (phocids), exhibit a range of
56 breeding strategies. Some small phocids, such as harbour seals (*Phoca vitulina*), are also income breeders,
57 but, in contrast to otariids, pups can dive within hours of birth. Despite short dependency periods (< 1
58 month¹⁷), harbour seal pups can develop diving skills during suckling and may accompany their mothers
59 on foraging excursions¹⁸. Synchronous diving of mothers and pups during lactation also occurs in some ice-
60 breeding phocids¹⁹. Larger phocid species, such as elephant (*Mirounga spp.*), hooded (*Cystophora cristata*)
61 and grey (*Halichoerus grypus*) seals, are usually capital breeders, and pups are abruptly abandoned at the
62 natal site after a brief nursing period¹⁴. Grey seals, for example, suckle for 15-21 days²⁰. Pups then undergo
63 a post-weaning fast, usually on land, of between nine and 40 days, during which time they lose up to 25%
64 of their body mass^{21,22}. After departure from the natal colony, they must learn to dive and find food without
65 maternal provisioning, or the benefit of observing the foraging behaviour of their mother²³. Furthermore,
66 they must do this before their remaining blubber and protein reserves are depleted to critical levels and
67 terminal starvation begins²⁴.

68 Swimming in cold water and diving to depth is energetically costly, and seal pups have a higher surface
69 area to volume ratio, higher mass-specific metabolic rate and lower mass-specific oxygen storage capacity
70 than adults^{25,26}. In contrast to adults, young seals repeatedly dive up to their physiological limits and
71 foraging efficiency is therefore lower because they must spend longer at the surface to recover^{15,27}.
72 Maximum diving capability increases in grey seal pups during the first months at sea²⁴, but little is known
73 about the development of their routine behaviours. First year mortality is high and variable between years
74 for grey seals²⁸⁻³⁰, which has a profound effect on population dynamics³¹. Moreover, first year survival
75 probability appears to be three times greater for females than males, regardless of body condition at
76 weaning²⁹. Differences in survival between male and female pups could be linked to development of sex-
77 specific diving behaviour, leading to the sex difference in foraging strategies underpinned by sexual size
78 dimorphism in adults³². In general, adult grey seals make repeated, short duration (3-10 days) foraging
79 trips offshore within shelf seas, diving to the bottom to exploit benthic and demersal prey, and returning
80 to coastal 'haul-out' sites^{33,34}. Most research has focussed on adult movements and foraging strategies.
81 Whilst some work has investigated foraging in grey seal juveniles and YOY^{35,36}, and others have studied pup
82 behaviour on and around the colony^{37,38}, only Bennett *et al.*²⁴ have examined the ontogeny of at-sea
83 behaviour in recently-weaned pups across their first months of nutritional independence. Previous studies
84 have demonstrated sex differences in the foraging behaviour of grey seal adults (seals of reproductive
85 age)^{32,36}, juveniles (> 12 months old)³⁶, and young-of-the-year (YOY; 5 months old)³⁵. Sex differences in
86 behaviour thus emerge from an early age³⁵, but the timing of their onset is unknown. Development of diving
87 and learning of successful foraging behaviour is also likely to be shaped by local experience, and the
88 environment that pups encounter when they first go to sea. Oceanographic conditions and prey availability
89 vary among regions, presenting different challenges for different subpopulations. Together, these factors
90 may confer regional differences in the ontogeny of diving behaviour and thus the development of successful
91 foraging strategies for grey seal pups.

92 The United Kingdom (UK) is home to ~38% of the world grey seal population³⁹ and has an obligation under
93 European Union (EU) legislation to maintain this population in favourable conservation status (FCS)⁴⁰. As
94 part of this obligation, critical habitat must be identified for this species both on land and at sea to assess
95 and mitigate anthropogenic disturbance. Current UK conservation management for grey seals at sea is
96 largely based upon observations of adult movement³⁹. Foraging behaviour has not yet been described for
97 grey seal pups, however, given that they undergo profound physiological development during their initial
98 months of independent life^{24,25}, coupled with a need to explore their environment and develop knowledge
99 of potential foraging areas, we should not expect their behaviour and habitat requirements to be the same
100 as for adults. As pups develop diving skills, grow larger and acquire knowledge of their surroundings, we
101 might expect that their behaviour begins to converge on that of adults, since adult behaviour represents
102 successful foraging patterns. The main aim of this study, therefore, was not to quantify foraging in grey seal
103 pups, but to investigate changes in at-sea behaviours relevant to the development of successful foraging
104 skills during their first four months of independent life at sea. We used a unique, large ($n = 52$ individuals)
105 animal-borne satellite and GSM telemetry dataset of location and dive (time-depth) data from recently-
106 weaned pups born at six different colonies around the UK (Table 1). Ontogeny of foraging behaviour has

107 been characterised in young seals by reductions in trip metrics (duration and distance), and increases in
108 dive metrics (depth, duration, proportion of dives that are benthic, bottom time and proportion of day spent
109 diving) with age^{15,24,41,42}. Such changes in these metrics are indicative of an individual's ability to maximise
110 foraging opportunities within individual dives and/or over foraging trips, and are thus representative of
111 greater foraging efficiency^{15,24,41,42}. Thus, using generalized estimating equations in a generalized additive
112 model framework (GEE-GAM), we investigated how these variables changed over time and compared the
113 trajectories between the sexes and two distinct geographic regions (Celtic and Irish Seas (hereafter CIS)
114 and North Sea (hereafter NS); Fig. 1). Furthermore, sexual segregation of foraging habitat may be
115 manifested in the depth of water where males and females dive³⁵. We therefore examined differences in
116 the bathymetric depth of dive locations in the same way.

117

118 **Results**

119 **Trip behaviour**

120 All pups remained within the limits of the continental shelf, but NS individuals had a much wider dispersal
121 pattern, and several pups travelled along the shelf break (Fig. 1). Although NS pups travelled far from their
122 natal colonies on individual trips, all returned to haul-out locations on the east coast of Scotland and
123 England. No pup crossed the shelf break into waters > 200 m deep. However, one male from the Isle of May
124 travelled between the UK and Norway on multiple occasions, diving to the bottom of the Norwegian Trench
125 (Fig. 1b; > 200 m). In general, pups from both regions explored new areas before settling into repeated trip
126 behaviour, hauling-out in one or more locations and commuting back and forth to foraging grounds, as
127 observed in adults³⁴ (Fig. 2). Many NS pups undertook a prolonged exploratory phase shortly after leaving
128 the colony, with 69% of pups (n=24) spending > 20 days offshore without returning to the coast, and some
129 individuals exceeding 60 days offshore, which is substantially greater than typical trip durations seen in
130 adults³⁴. Only 18% of CIS pups (n=3) performed a trip with duration > 20 days. CIS pups remained much
131 closer to land, generally dispersing along the coast of Wales and the Republic of Ireland (Fig. 1a). One female
132 travelled south towards the north coast of France before returning to the south coast of England. Some
133 individuals made repeated trips into the middle of the Celtic Sea, while others remained within 30 km of
134 the coastline, and never travelled > 50 km from their natal colony (Fig. 3).

135 Trip duration increased significantly with time after leaving the colony for pups from both regions (Table
136 2; GEE-GAM; $\chi^2_3 = 15.2$, $p = 0.002$), peaking at around 70 days before declining (Fig. 4a-b). However, trip
137 duration was significantly longer for NS pups than CIS pups (Fig. 4a-b; GEE-GAM; $\chi^2_1 = 66.1$, $p < 0.001$).
138 There was no significant difference in trip duration between males and females in either region (GEE-GAM;
139 $\chi^2_1 = 1.4$, $p = 0.233$). Trip distance was also significantly affected by time since departure for pups from both
140 regions (Table 2; GEE-GAM; $\chi^2_3 = 8.2$, $p = 0.042$), peaking at around 70 days then declining (Fig. 4c-d).
141 However, there was a significant effect of an interaction between region and sex on trip duration (Fig 4d;
142 GEE-GAM; $\chi^2_1 = 4.73$, $p = 0.03$); NS pups travelled consistently further than CIS pups. CIS males travelled
143 further than females, whilst there was no obvious sex difference in trip distance for NS pups.

144

145 **Dive behaviour**

146 A three-way interaction between time since departure, region and sex best explained variation in daily
147 mean maximum dive depth (Table 2; GEE-GAM; $\chi^2_3 = 13.6$, $p = 0.003$). Pups increased their dive depth
148 rapidly over the first 40 days, except for CIS females, which showed a prolonged, more moderate increase
149 (Fig. 5a-b). Sex differences in the change in dive depth over time were apparent in CIS pups, with males
150 diving significantly deeper than females from 20-60 days after leaving the colony (Fig. 5b). The population
151 mean maximum depth for CIS males during this period reached ~40 m, whilst females achieved ~25 m.
152 Throughout the time series, NS pups dived significantly deeper than CIS pups, with both males and females
153 reaching a maximum daily mean of ~50 m.

154 A three-way interaction between time since departure, region and sex best explained variation in daily
155 mean bathymetric depth of dive locations (Table 2; GEE-GAM; $\chi^2_3 = 10.4$, $p = 0.016$). NS pups and CIS males
156 dived in increasingly deep water over the first 40 days after departure from the colony (Fig. 5c). CIS females
157 remained in shallower water than males throughout the first four months at sea, averaging depths of ~30
158 m whilst mean bathymetric depth for male dives reached up to ~60 m (Fig. 5d). No significant sex difference
159 was evident in bathymetric depth of dive locations for NS pups. Both male and female NS pups dived in
160 significantly deeper water than CIS pups, reaching a maximum daily mean of ~80 m.

161 The daily mean proportion of dives that were benthic changed with time since departure, and the dynamic
162 of this change was different between the regions (Table 2; GEE-GAM; $\chi^2_3 = 13.1$, $p = 0.004$). Pups from both
163 regions increased the proportion of benthic dives rapidly over the initial 40 days. This reached an
164 asymptote for NS pups (Fig. 5e), but continued to increase for CIS pups (Fig. 5f). The trend showed some
165 evidence of a decline in the latter half of the time series for NS pups, but confidence intervals were wide
166 (Fig. 5e). Females performed a greater proportion of benthic dives than males throughout the time series
167 in both regions (GEE-GAM; $\chi^2_1 = 5.2$, $p = 0.023$). The daily mean proportion of benthic dives reached a peak
168 at ~0.5 for NS females, ~0.6 for CIS females, ~0.4 for NS males, and ~0.5 for CIS males. Confidence intervals
169 for the sexes overlapped in both regions. The effect of bathymetric depth on the proportion of dives that
170 were benthic is presented in Supplementary Information (Supplementary Results: Effects of bathymetric
171 depth on benthic diving).

172 Daily mean dive duration was best explained by an interaction between time since departure and region
173 (Table 2; GEE-GAM; $\chi^2_3 = 16.4$, $p < 0.001$). There was no significant effect of sex on this metric (GEE-GAM;
174 $\chi^2_1 = 2.5$, $p = 0.117$). Similar to dive depth and bathymetric depth, pup dive duration increased rapidly over
175 the initial 40 days at sea for both regions, before declining over the following 60 days (Fig. 6a-b). Peak mean
176 dive duration for NS pups was marginally longer than for CIS pups (NS: ~140 s, CIS ~130 s).

177 Temporal patterns in bottom time differed between regions (Table 2; GEE-GAM; $\chi^2_3 = 14.9$, $p = 0.002$). CIS
178 pups showed a strong increase in bottom time over the initial 40 days at sea, before levelling off, then a
179 further increase at ~100 days. NS pups showed a moderate increase over the whole time series, with

180 bottom time remaining between 40-50% of dive duration (Fig. 6c-d). In addition, sex differences in bottom
181 time differed between the regions (GEE-GAM; $\chi^2_1 = 9.3$, $p = 0.002$). In both regions, females achieved higher
182 bottom times than males (although 95% confidence intervals overlapped for NS pups; Fig. 6c). The
183 difference between males and females was more pronounced in CIS pups: females achieved a maximum
184 mean of ~70% of the dive spent in the bottom phase, whilst males achieved a maximum mean of ~55%
185 (Fig. 6c-d).

186 Time spent diving per day varied significantly with time since departure, and the shape of this relationship
187 was affected by sex (Table 2; GEE-GAM; $\chi^2_3 = 13.9$, $p = 0.003$) and region (GEE-GAM; $\chi^2_3 = 15$, $p = 0.002$).
188 The sex difference was comparable between both regions (GEE-GAM; $\chi^2_1 = 0.02$, $p = 0.885$). NS pups began
189 diving ~14 hrs per day, then reduced time spent diving in the third month to ~10 hrs for males and ~12
190 hrs for females (Fig. 6e). CIS females initially spent ~11 hrs diving per day, which rose steadily to ~13 hrs
191 in the third month (Fig. 6f). CIS males initially spent ~10 hrs per day diving, which rose steeply to ~13 hrs
192 in the first month before declining back to ~11 hrs in the third month (Fig. 6f).

193

194 Discussion

195 This study reveals that sexual segregation of behaviour can be exhibited as early as nutritional
196 independence in capital breeders. Female pups from both regions spent more time diving per day than
197 males. CIS females made shorter distance trips than males, diving in shallower water and achieving a higher
198 proportion of the dive duration in the bottom phase. The same level of sexual segregation in depth,
199 proportion bottom time and trip duration was not observed in NS pups, suggesting that sex differences in
200 the ontogeny of foraging behaviour may be mediated by extrinsic factors. In both regions, pup behaviour
201 changed rapidly: dive duration, depth, bottom time and benthic diving increased over the first 40 days after
202 leaving the colony. These findings are important in the context of both foraging ecology and conservation
203 management, as we outline below.

204 Grey seal adults exhibit substantial sexual size dimorphism²³, which is thought to drive differences in
205 feeding areas³². Grey seal pups are not size-dimorphic²⁴, but seal pups and juveniles may experience
206 differences in energy requirements before overt size and body composition differences emerge⁴³. Kelso *et*
207 *al.*⁴³ found that male northern elephant seal (*M. angustirostris*) pups had higher rates of energy expenditure
208 than females during the post-weaning fast, but were more effective at sparing protein reserves. These
209 differences are likely related to the development of sex-specific metabolic strategies required for successful
210 breeding⁴³. Differences in metabolic demand during the ontogeny of foraging behaviour could therefore
211 drive sex-specific feeding strategies and habitat requirements. Our findings support this possibility; we
212 found that females from both regions spent longer performing behaviours consistent with foraging across
213 two different temporal scales (individual dives and 24 h period). At the individual dive scale, time in the
214 bottom phase is indicative of time at potential foraging depth, with the descent and ascent phases of the
215 dive representing the transit to and from any potential prey patch¹⁰. Despite the lack of sex difference in
216 total dive duration, females spent longer in the bottom phase than males relative to total dive duration. At

217 the 24 h scale, females spent on average 2 h more diving than males in both regions. We also found a
218 moderate sex difference in the proportion of dives that reached the seabed, with females performing more
219 benthic dives than males. Females may therefore have increased chance of prey capture during individual
220 dives, which could represent an energetic advantage^{10,44}, and contribute to higher survival probability of
221 female pups²⁹. However, we cannot exclude the possibility that females spend more time diving because
222 they are searching and are unsuccessful. Using direct observations of prey capture (i.e. stomach
223 temperature telemetry, accelerometers or video cameras) to ground-truth putative foraging as identified
224 from location and dive data would help to evaluate foraging success⁴⁵, and draw links between differences
225 in ontogeny of foraging behaviour and survival probability.

226 Sex differences in bottom time, proportion of benthic dives, and time spent diving per day may be related
227 to differences in the type and quality of prey items consumed by male and female pups. For example, if
228 females target lower energy prey items, they will need to spend longer foraging than males for the same
229 energetic gain. Grey seals adults are benthic foragers with a broad diet that varies between the sexes^{46,47}.
230 Beck *et al.*⁴⁷ used quantitative fatty acid analysis to investigate niche breadth in grey seals in the northwest
231 Atlantic. They found that the diet composition of YOY animals was significantly broader than that of adults,
232 but found no sex differences for young animals. However, grey seal diet varies regionally and seasonally^{46,47},
233 and therefore extrinsic factors unique to certain locations may shape sex differences in diet for young
234 animals. No specific information currently exists on the diet of recently-weaned grey seal pups in the UK
235 once they have left the colony due to the logistical constraints of collecting tissue and/or faecal samples
236 specifically from this age-class. However, a recent study of stable isotope ratios obtained from the teeth of
237 older juvenile grey seals in the North Sea suggests that they feed on a wide variety of low trophic level,
238 benthic prey close to shore⁴⁸. The sharp increase in proportion of benthic dives over the first 40 days, and
239 the subsequent reduction in trip distance, may therefore be indicative of pups learning to exploit benthic
240 prey, and finding foraging grounds closer to shore where they can effectively reach the bottom. Additional
241 dive analysis also suggests that shallow waters < 20 m deep may represent important foraging habitat for
242 grey seal pups (see Supplementary Results: Effects of bathymetric depth on benthic diving).

243 Water depth is an important regulating factor in foraging behaviour and habitat preference in older grey
244 seals^{49,50}. Breed *et al.*³⁵ reported that adult and YOY females in the northwest Atlantic population forage in
245 shallower water than males. Our data from CIS pups, showing that females dived in significantly shallower
246 water than males, support these findings and suggest that water depth may play a key role in the
247 development of habitat (and possibly diet) segregation among the sexes in some regions. We also found a
248 moderate sex difference in trip distance for CIS pups, with males travelling further than females. Given that
249 there was no sex difference in trip duration, this may mean that CIS males travel further offshore to forage
250 compared to females, accessing deeper water, and potentially spending longer travelling per unit time
251 spent foraging than females. CIS females performed a greater proportion of benthic dives in shallow water
252 (<20 m) than males (see Supplementary Results: Effects of bathymetric depth on benthic diving). The fact
253 that CIS pups dived in shallower water than NS pups likely means that they were able to achieve greater
254 dive bottom time and proportion of benthic dives as they spent less time in the ascent and descent phases

255 of the dive. Sex differences in trip distance and water depth of dive locations were not strongly evident for
256 NS pups. As with other metrics, sex differences may be mediated by extrinsic factors that vary among
257 regions, such as prey distribution, physical oceanography, and the diversity of available habitats. In general,
258 the North Sea is a more homogeneous ecosystem, with less variation in bathymetry and habitat types than
259 the Celtic and Irish Seas⁵¹, which may reduce sexual niche separation in NS pups.

260 Intra and inter-specific competition may impact trip distance and duration in central place foragers.
261 Juvenile grey seals in the northwest Atlantic travel further and for longer on foraging trips than adults,
262 likely as a result of competitive exclusion from the best foraging grounds closer to shore⁵². Age-related
263 segregation has also been reported for other phocid species⁵³. We found that NS pups travelled further
264 offshore and performed longer trips than CIS individuals. Population density of grey seal adults is much
265 higher on the east coast of Scotland compared to the Celtic and Irish Seas^{39,54}. Moreover, Russell *et al.*³⁶
266 showed that adult males in the North Sea reduce their time spent travelling to foraging locations in winter,
267 whilst juveniles show an increase. Given that NS pups leave the colony during the winter months, and we
268 see the longest trips performed during this time, competitive exclusion by conspecifics may be a feature of
269 movement patterns specifically during the winter, forcing pups to make longer trips further offshore. In
270 addition, harbour seals are present in coastal regions of the North Sea, but not in the Celtic and Irish Seas⁵⁴.
271 Inter-specific competition may also contribute to NS pups travelling further offshore than CIS pups.

272 Our results show that NS pups can make trips of over two months in duration, travelling greater distances
273 than commonly observed in adult foraging trips and hauling out less frequently³⁴. We also found that pups
274 significantly reduced their trip duration and distance in the third month (Fig. 2). A similar temporal
275 dynamic has been observed in other phocids, with young seals reducing trip duration after an initial
276 increase⁴¹, and may be indicative of an increase in foraging efficiency, or a change in foraging strategy as
277 pups age. Moreover, the higher initial trip duration and distance may represent an exploration phase in the
278 development of NS pups. Votier *et al.*⁵⁵ found that immature northern gannets (*Morus bassanus*) develop
279 knowledge of foraging grounds during early-life exploratory trips. This may also be the case for grey seal
280 pups, as, like gannets, they receive no parental guidance in the location of foraging resources. Furthermore,
281 we found that some pups returned to forage repeatedly in areas that they had previously discovered during
282 their initial exploratory trip (Fig. 2). Exploration may therefore be an important behaviour in determining
283 future foraging success⁸.

284 CIS pups also performed exploratory trips, although their duration and distance was lower than those
285 performed by NS pups. Individuals from NS colonies are not as geographically constrained as CIS pups by
286 the proximity of land and shelf edge and therefore have more marine space to explore. Upon leaving the
287 colony, CIS pups are more likely to encounter coastline, and therefore suitable haul-out locations, than pups
288 in the North Sea. Alternatively, the offshore phase could be driven by environmental variables not
289 measured in this study. For example, tidal currents may direct pups further from land in the North Sea. The
290 reduction in trip distance after 60 days for NS pups may therefore be related to a seasonal change in
291 physical oceanography, or an increase in their ability to resist surface currents as muscle strength improves.

292 Grey seals are known to rest at sea³⁶, and this study provides further evidence that they do not need to
293 return to shore to rest, even when very young.

294 Our results show that pup movements can change rapidly throughout the initial months at sea. Therefore,
295 accurately quantifying foraging effort from these data may require extension of current analytical
296 techniques, such as state-space models (SSMs)⁴⁵, to account for temporal changes in movement patterns.
297 Moreover, as a priority for future work, analysis of pup foraging habitat preference may allow us to infer
298 potential prey species based on habitat features such as substrate type, and further assess the implications
299 of early-life sexual segregation in movement patterns for foraging ecology.

300 In addition to ontogenetic changes in muscular and cardio-vascular systems, oxygen storage capacity and
301 metabolic rate, and the development of knowledge of profitable foraging areas, there are likely to be
302 seasonal changes in foraging habitat and prey distribution which may further explain differences in pup
303 behaviour over time. Given that pups leave the colony on different dates in both regions (see
304 Supplementary Note: Colony departure dates), local conditions may dictate some of the patterns observed
305 here. Bennett *et al.*⁵⁶ have shown that maximum dive depth of adult southern elephant seals may be
306 regulated by seasonally-mediated factors, however, due to a paucity of tracking data from post-breeding
307 adult grey seals in the UK, seasonal changes in at-sea behaviour are unclear. It was therefore not possible
308 to disentangle ontogeny from seasonal effects on pup behaviour. Furthermore, some of the variance in
309 early-life behavioural ontogeny may be explained by the fact that post-weaning fast duration varies among
310 individuals²⁴, and age at the point of departure from the colony is not equal for all pups. Natal and weaning
311 dates were not known for all pups in this study, and time since departing colony was therefore used as a
312 measure of at-sea experience. Future research should aim to achieve simultaneous tagging of adults,
313 juveniles and pups, coupled with colony-based monitoring, which will allow us to further tease apart
314 intrinsic and extrinsic drivers of variation in grey seal foraging behaviour and investigate the potential for
315 competitive exclusion³⁶.

316 Investigating the factors that affect the ontogeny of early-life behaviours is key to understanding how
317 populations may respond to natural and anthropogenic threats. Bennett *et al.*²² suggested that grey seal
318 pups have an average of 36 days in which to find food after leaving the colony before their protein reserves
319 are critically depleted and starvation occurs. Our results show that profound changes in pup behaviour
320 happen during the first 40 days after departure from the colony, indicating this initial period at sea is likely
321 of particular importance for development of effective foraging strategies. Consequently, pups may be most
322 vulnerable to disturbance from a number of growing anthropogenic activities, such as increased vessel
323 traffic⁵⁷, intensive fishing practices⁵⁸ and offshore construction⁵⁹ during this period, with substantial
324 consequences for survival. Given the importance of early-life survival for maintaining stable populations³¹,
325 and the rapid development of key behaviours during this period, conservation managers should make
326 special considerations for pups during their initial months at sea to effectively mitigate these threats and
327 avoid population-level impacts. With continuing development of biologging technology and analytical
328 techniques, further work is urgently needed to fully explore and describe the ontogeny of fundamental

329 behaviours in naïve marine predators and identify critical habitat for young animals during their most
330 vulnerable life stage.

331

332 **Methods**

333 **Instrumentation**

334 Two different telemetry device models were deployed on 52 recently-weaned grey seal pups at six UK
335 breeding sites in 2001 and 2002²⁴, and in 2009 and 2010⁶⁰ (Table 1). Earlier deployments (2001-2002;
336 n=21) were Argos Satellite Relay Data Loggers (SRDL; Sea Mammal Research Unit, UK), and later
337 deployments (n=31) were Fastloc® GPS-GSM tags (GPS phone tags; Sea Mammal Research Unit, UK).
338 Individuals were captured post-weaning for device application. When anaesthesia was required (due to
339 additional procedures not related to this study; CIS 2010 and all Isle of May deployments), pups were
340 administered with 0.025 mg kg⁻¹ intravenous Zoletil₁₀₀® (Virbac, France)^{24,60}. Following McConnell *et al.*³⁴,
341 a tag was glued to cleaned, dried fur at the base of the skull using RS Quick-Set Epoxy Adhesive (RS
342 Components Ltd., UK; 2001-2009), or Loctite® 422™ cyanoacrylate adhesive (Henkel, UK; 2010). All
343 experimental protocols were carried out with UK Home Office approval under project licences #60/2589
344 (2001-2002), and #60/4009 (2009-2010), in accordance with the Animals (Scientific Procedures) Act 1986.
345 In total, 7057 days of data were recorded from 52 pups (for information on tag duration see Supplementary
346 Note: Tag duration).

347

348 **Telemetry data processing**

349 ***Horizontal movement data***

350 Whilst both SRDL and GPS-GSM devices transmitted location data at irregular intervals, mean number of
351 location fixes achieved per day was much higher for GPS-GSM tags (Table 1). Argos-derived location
352 estimates from SRDLs also carry a greater spatial error, ranging from 50 m to > 2.5 km⁶¹. Erroneous Argos
353 location observations were eliminated using the standard technique of filtering with a maximum speed
354 threshold of 2 ms⁻¹.⁶² Remaining locations were then processed with a Kalman filter to improve location
355 accuracy⁵⁴. Kalman filter observation model parameters were taken from Vincent *et al.*⁶¹, and process
356 model parameters were based on average speeds of 142 seal GPS tracks⁵⁴. Erroneous GPS locations were
357 identified and excluded using residual error thresholds and number of satellites³⁶.

358 Devices also recorded dive and haul-out data derived from integrated conductivity and pressure sensors.
359 Following Russell *et al.*³⁶, a seal's location during a haul-out event was taken as the mean of all latitude and
360 longitude estimates during the time hauled-out. If no location estimates were recorded during the haul-out
361 interval, the location was derived using linear interpolation to a midpoint between the pre and post
362 observed location fixes. Interpolated haul-out locations were flagged as unreliable if there was no adjacent

363 observed location within 6 h. The location data were then restricted to discrete ‘trips’ between haul-out
364 events. Trips were only included in the analysis if they had a reliable haul-out location on land at both the
365 beginning and end. One individual hauled-out repeatedly on an offshore oil rig in the central North Sea >
366 250 km from land; these haul-outs were classed as on land and the associated trips were included in the
367 analysis. Seals often wait in the water between haul-out events for tidal sites to become available, when
368 they may sleep either on the seabed or at the surface⁶³. To exclude this behaviour, as it is not relevant to
369 foraging, trips < 8 hr in duration and with a maximum distance < 500 m from the coast were also omitted
370 from the analysis⁶⁴. Finally, as tag duration varied between individuals (from 13 to 337 days; see
371 Supplementary Note: Tag duration), data were clipped at 120 days after leaving the colony to ensure a
372 robust sample size throughout the time series for statistical analysis⁶⁵. Sample sizes are presented
373 alongside rug plots (Fig. 4). The resulting dataset comprised location and haul-out data from 52 individuals;
374 23 males and 29 females (Table 1; Fig. 1; 836 trips). The duration and total distance of each trip was
375 calculated alongside days since first leaving the natal colony at the mid-point of the trip. Total distance was
376 calculated as the sum of all step lengths between successive location fixes during a trip, regularised to 30
377 min intervals. Days since leaving colony was used to give a measure of the at-sea experience of the pup.

378

379 *Dive data*

380 GPS-GSM tags classified dives as periods when the pressure sensor recorded depths > 1.5 m for > 8 s. These
381 devices recorded depth readings at 4 s intervals throughout a dive, which were then abstracted to 11
382 inflection points by an algorithm onboard the device before data transmission⁶⁶. Although SRDLs also
383 recorded dive data, tag parametrisation was different to that of GPS-GSM tags (SRDLs only recorded dives >
384 6 m depth with four inflection points). Furthermore, the lower frequency of successful transmissions and
385 higher spatial error of concomitant Argos-derived location estimates meant that SRDL dive data could not
386 be accurately matched to a location, and thus to bathymetric depth, and were therefore excluded from all
387 dive analyses. For GPS-GSM dive data, the maximum dive depth and total dive duration were extracted for
388 each dive. A dive was treated as any time below the depth threshold (1.5 m). Devices also transmitted two-
389 hourly summaries of data, detailing the proportion of time the device was in either “haul-out”, “dive” or
390 “cruise” (device is wet and above 1.5 m) mode. These data were used to calculate the total number of hours
391 spent diving per individual per day. Only days with data for all twelve summary intervals were used.

392 To investigate changes in the proportion of benthic dives performed by pups, and the bathymetric depth of
393 dive locations, dives were first matched to adjacent location fixes in time using the mid-point between dive
394 start and end times. The location for each dive mid-point was then calculated using linear interpolation
395 between prior and post location fixes. Interpolated dive locations with no adjacent observed location fix
396 within 15 min could not be accurately matched with bathymetric depth data and were therefore excluded
397 from the analysis. Bathymetric depth was extracted for each dive location from the harmonised 1/8 arc
398 minute * 1/8 arc minute (~230 m) gridded Digital Terrain Model (DTM) for European Waters which is
399 freely-available through the European Marine Observation and Data Network (EMODnet) Portal for

400 Bathymetry⁶⁷. Benthic dives were classified following Ramasco *et al.*⁶⁸, using a mixture distribution model
401 approach (see Supplementary Methods: Classification of benthic dives). The bathymetric depth range of
402 the study area is shown in Fig. 1. After filtering, a number of dives (15%) recorded a null or positive
403 bathymetric depth value, due to interpolated dive locations falling too close to the coast, and were
404 subsequently removed. As with trip data, the resulting dive dataset was clipped to 120 days after leaving
405 the colony to ensure a robust sample size throughout the time series. Sample sizes are presented alongside
406 rug plots (Figs. 5-6). Lastly, as seals may perform successive shallow dives while resting close to haul-outs,
407 and this is not related to foraging behaviour, any dive with a maximum depth < 5 m was excluded. The final
408 dataset comprised 102,800 dives from 31 individuals (Table 1).

409

410 **Statistical analysis**

411 Trip (duration and distance) and dive metrics (depth, bathymetric depth of dive locations, proportion of
412 dives that were benthic, duration, bottom time and proportion of day spent diving) were analysed using
413 generalised estimating equations within a generalized additive model framework (GEE-GAMs) using the
414 “geepack” and “splines” packages⁶⁹ in R⁷⁰. The GAM approach allows the inclusion of smoothed terms to
415 investigate non-linear relationships⁷¹. However, GAMs are not robust to the serial autocorrelation within
416 individuals that is inherent in longitudinal telemetry datasets. GAMs can be extended to include
417 autocorrelation structures and random effects, however the GEE approach allows the inclusion of an
418 unstructured correlation coefficient, which is more appropriate for telemetry data as it estimates all
419 correlations between within-individual observations independently⁷². Furthermore, this method allows
420 the prediction of population mean responses by averaging across individuals. This approach has been
421 previously applied to study temporal movement trends in seal telemetry datasets³⁶.

422 We investigated ontogeny in pup dive behaviour using a number of metrics, at a temporal resolution of one
423 day by calculating daily means per individual per day. As pups grow, their muscular and cardio-vascular
424 systems develop, and they convert blubber into lean mass, becoming less buoyant^{25,73}. Their ability to dive
425 to, and remain at depth should therefore increase over time²⁴. Daily mean dive maximum depth and
426 duration were used to track changes in diving ability over time. For air-breathing benthic foragers, the
427 depth of water in which dives occur is also relevant to their ability to dive to and remain at foraging depth.
428 The bathymetric depth of water where dives occurred was also modelled in the same way. Optimal diving
429 theory (ODT) suggests that benthic foragers will maximise time at the seabed (and therefore probability of
430 successful foraging), and minimise time spent in the ascent and descent phases of a dive and at the surface⁷⁴.
431 We therefore investigated changes in the proportion of dives that were benthic, and in dive bottom time
432 (the proportion of a dive’s duration spent at > 80% of the maximum dive depth; a measure of time spent at
433 foraging depth relative to descent and ascent phases of a dive)⁷⁵. Lastly, pups may maximise time spent
434 underwater (and therefore foraging opportunities) over bouts of short dives, rather than individual long
435 dives^{10,44}. We therefore investigated changes in the mean proportion of time spent diving per individual
436 per day (24 h period).

437 Pup behaviour may change through time, and the dynamics of this change may differ between the sexes,
438 and/or geographic regions (due to differences in habitat features such as coastal geography, prey
439 availability and bathymetry). Therefore, response variables were analysed in separate models as a function
440 of time since leaving colony (days; as a smoothed term), sex (as a categorical term) and region (as a
441 categorical term) in a three-way interaction. Model selection was performed by backwards hypothesis
442 testing from GEE-based p-values until arriving at a minimum adequate model. Colonies were assigned to
443 one of two geographic regions (Table 1; North Sea or Celtic and Irish Seas). There was considerable spatial
444 overlap of areas used by pups from colonies within each of the two wider geographic regions (Fig. 1), such
445 that region rather than colony was used in the models for the sake of parsimony, and to maximise statistical
446 power. 95% confidence intervals around model-predicted means were calculated by parametric
447 bootstrapping using GEE-based uncertainty parameters⁵⁴. Scale-corrected Pearson's residuals were
448 checked for normal distribution by visual inspection in all models. For models with continuous response
449 variables (all except bottom time, benthic diving and proportion of day spent diving), Gamma and Poisson
450 error structures were considered to improve normality, but in all cases a Gaussian error structure with log-
451 link function proved superior. Bottom time, proportion of dives that were benthic and proportion of day
452 spent diving (proportion data) were modelled with a binomial error structure with logit-link function.

453

454 **Data availability**

455 The datasets used in the current study are available from DJFR; dr60@st-andrews.ac.uk.

456

457 **References**

- 458 1. Lindström, J. Early development and fitness in birds and mammals. *Trends Ecol. Evol.* **14**, 343–348
459 (1999).
- 460 2. Sæther, B.-E. *et al.* How life history influences population dynamics in fluctuating environments.
461 *Am. Nat.* **182**, 743–759 (2013).
- 462 3. Orgeret, F., Weimerskirch, H. & Bost, C.-A. Early diving behaviour in juvenile penguins:
463 improvement or selection processes. *Biol. Lett.* **12**, 20160490 (2016).
- 464 4. Daunt, F., Afanasyev, V., Adam, A., Croxall, J. P. & Wanless, S. From cradle to early grave: juvenile
465 mortality in European shags *Phalacrocorax aristotelis* results from inadequate development of
466 foraging proficiency. *Biol. Lett.* **3**, 371–374 (2007).
- 467 5. Sullivan, K. A. Predation and starvation : age-specific mortality in juvenile juncos (*Junco*
468 *phaenotus*). *J. Anim. Ecol.* **58**, 275–286 (1989).
- 469 6. Riotte-Lambert, L. & Weimerskirch, H. Do naive juvenile seabirds forage differently from adults?
470 *Proc. R. Soc. B* **280**, 20131434 (2013).
- 471 7. Shillinger, G. L. *et al.* Tagging through the stages: technical and ecological challenges in observing
472 life histories through biologging. *Mar. Ecol. Prog. Ser.* **457**, 165–170 (2012).

- 473 8. de Grissac, S., Bartumeus, F., Cox, S. L. & Weimerskirch, H. Early-life foraging: behavioral responses
474 of newly fledged albatrosses to environmental conditions. *Ecol. Evol.* **7**, 6766–6778 (2017).
- 475 9. Rotics, S. *et al.* The challenges of the first migration: movement and behaviour of juvenile vs. adult
476 white storks with insights regarding juvenile mortality. *J. Anim. Ecol.* **85**, 938–947 (2016).
- 477 10. Boyd, I. L. The behavioural and physiological ecology of diving. *Trends Ecol. Evol.* **12**, 213–217
478 (1997).
- 479 11. Ropert-Coudert, Y., Beaulieu, M., Hanuise, N. & Kato, A. Diving into the world of biologging.
480 *Endanger. Species Res.* **10**, 21–27 (2009).
- 481 12. Hussey, N. E. *et al.* Aquatic animal telemetry: a panoramic window into the underwater world.
482 *Science* **348**, 1255642 (2015).
- 483 13. Hazen, E. L. *et al.* Ontogeny in marine tagging and tracking science: technologies and data gaps.
484 *Mar. Ecol. Prog. Ser.* **457**, 221–240 (2012).
- 485 14. Boness, D. J. & Bowen, W. D. The evolution of maternal care in pinnipeds. *Bioscience* **46**, 645–654
486 (1996).
- 487 15. Fowler, S. L., Costa, D. P., Arnould, J. P. Y., Gales, N. J. & Kuhn, C. E. Ontogeny of diving behaviour in
488 the Australian sea lion: trials of adolescence in a late bloomer. *J. Anim. Ecol.* **75**, 358–367 (2006).
- 489 16. Jeglinski, J. W. E., Werner, C., Robinson, P. W., Costa, D. P. & Trillmich, F. Age, body mass and
490 environmental variation shape the foraging ontogeny of Galapagos sea lions. *Mar. Ecol. Prog. Ser.*
491 **453**, 279–296 (2012).
- 492 17. Thompson, P. M. & Wheeler, H. Photo-ID-based estimates of reproductive patterns in female
493 harbor seals. *Mar. Mammal Sci.* **24**, 138–146 (2008).
- 494 18. Bekkby, T. & Bjørge, A. Diving behaviour of harbour seal *Phoca vitulina* pups from nursing to
495 independent feeding. *J. Sea Res.* **44**, 267–275 (2000).
- 496 19. Sato, K., Mitani, Y., Naito, Y. & Kusagaya, H. Synchronous shallow dives by weddell seal mother-pup
497 pairs during lactation. *Mar. Mammal Sci.* **19**, 384–395 (2006).
- 498 20. Pomeroy, P. P., Fedak, M. A., Rothery, P. & Anderson, S. Consequences of maternal size for
499 reproductive expenditure and pupping success of grey seals at North Rona, Scotland. *J. Anim. Ecol.*
500 **68**, 235–253 (1999).
- 501 21. Noren, S. R., Boness, D. J., Iverson, S. J., McMillan, J. & Bowen, W. D. Body condition at weaning
502 affects the duration of the postweaning fast in gray seal pups (*Halichoerus grypus*). *Physiol.*
503 *Biochem. Zool.* **81**, 269–277 (2008).
- 504 22. Bennett, K. A., Speakman, J. R., Moss, S. E. W., Pomeroy, P. P. & Fedak, M. A. Effects of mass and
505 body composition on fasting fuel utilisation in grey seal pups (*Halichoerus grypus* Fabricius): an
506 experimental study using supplementary feeding. *J. Exp. Biol.* **210**, 3043–3053 (2007).
- 507 23. Hewer, H. R. *British Seals. The New Naturalist* 57. (HarperCollins, 1974).
- 508 24. Bennett, K. A. *et al.* Effects of age and body mass on development of diving capabilities of gray seal
509 pups: costs and benefits of the postweaning fast. *Physiol. Biochem. Zool.* **83**, 911–923 (2010).
- 510 25. Noren, S. R., Iverson, S. J. & Boness, D. J. Development of the blood and muscle oxygen stores in
511 gray seals (*Halichoerus grypus*): implications for juvenile diving capacity and the necessity of a
512 terrestrial postweaning fast. *Physiol. Biochem. Zool.* **78**, 482–490 (2005).

- 513 26. Burns, J. M. & Castellini, M. A. Physiological and behavioral determinants of the aerobic dive limit
514 in Weddell seal (*Leptonychotes weddellii*) pups. *J. Comp. Physiol. B* **166**, 473–483 (1996).
- 515 27. Burns, J. M. The development of diving behavior in juvenile Weddell seals: pushing physiological
516 limits in order to survive. *Can. J. Zool.* **77**, 737–747 (1999).
- 517 28. Hall, A. J., McConnell, B. J. & Barker, R. J. The effect of total immunoglobulin levels, mass and
518 condition on the first-year survival of grey seal pups. *Funct. Ecol.* **16**, 462–474 (2002).
- 519 29. Hall, A. J., McConnell, B. J. & Barker, R. J. Factors affecting first-year survival in grey seals and their
520 implications for life history strategy. *J. Anim. Ecol.* **70**, 138–149 (2001).
- 521 30. Hall, A. J., Thomas, G. O. & McConnell, B. J. Exposure to persistent organic pollutants and first-year
522 survival probability in gray seal pups. *Environ. Sci. Technol.* **43**, 6365–6369 (2009).
- 523 31. Harwood, J. & Prime, J. H. Some factors affecting the size of British grey seal populations. *J. Appl.*
524 *Ecol.* **15**, 401–411 (1978).
- 525 32. Beck, C. A., Bowen, W. D., McMillan, J. I. & Iverson, S. J. Sex differences in the diving behaviour of a
526 size-dimorphic capital breeder: the grey seal. *Anim. Behav.* **66**, 777–789 (2003).
- 527 33. Thompson, D., Hammond, P. S., Nicholas, K. S. & Fedak, M. A. Movements, diving and foraging
528 behaviour of grey seals (*Halichoerus grypus*). *J. Zool., Lond.* **224**, 223–232 (1991).
- 529 34. McConnell, B., Fedak, M., Lovell, P. & Hammond, P. Movements and foraging areas of grey seals in
530 the North Sea. *J. Appl. Ecol.* **36**, 573–590 (1999).
- 531 35. Breed, G. A., Bowen, W. D. & Leonard, M. L. Development of foraging strategies with age in a long-
532 lived marine predator. *Mar. Ecol. Prog. Ser.* **431**, 267–279 (2011).
- 533 36. Russell, D. J. F. *et al.* Intrinsic and extrinsic drivers of activity budgets in sympatric grey and
534 harbour seals. *Oikos* **124**, 1462–1472 (2015).
- 535 37. Kovacs, K. M. Maternal behaviour and early behavioural ontogeny of grey seals (*Halichoerus*
536 *grypus*) on the Isle of May, UK. *J. Zool., Lond.* **213**, 697–715 (1987).
- 537 38. Jenssen, B. M., Åsmul, J. I., Ekker, M. & Vongraven, D. To go for a swim or not? Consequences of
538 neonatal aquatic dispersal behaviour for growth in grey seal pups. *Anim. Behav.* **80**, 667–673
539 (2010).
- 540 39. SCOS. *Scientific advice on matters related to the management of seal populations. Main Advice*
541 *Report.* (2016).
- 542 40. Council of the European Communities. Council Directive 92/43/EEC of 21 May 1992: on the
543 conservation of natural habitats and of wild fauna and flora. *Off. J. Eur. Communities* 1–9, 17
544 (1992).
- 545 41. Blanchet, M.-A., Lydersen, C., Ims, R. A. & Kovacs, K. M. Making it through the first year: ontogeny
546 of movement and diving behavior in harbor seals from Svalbard, Norway. *Mar. Mammal Sci.* **32**,
547 1340–1369 (2016).
- 548 42. Baylis, A. M. M. *et al.* The ontogeny of diving behaviour in New Zealand fur seal pups
549 (*Arctocephalus forsteri*). *Can. J. Zool.* **83**, 1149–1161 (2005).
- 550 43. Kelso, E. J., Champagne, C. D., Tift, M. S., Houser, D. S. & Crocker, D. E. Sex differences in fuel use and
551 metabolism during development in fasting juvenile northern elephant seals. *J. Exp. Biol.* **215**,
552 2637–2645 (2012).

- 553 44. Sparling, C. E., Georges, J.-Y., Gallon, S. L., Fedak, M. & Thompson, D. How long does a dive last?
554 Foraging decisions by breath-hold divers in a patchy environment: a test of a simple model. *Anim.*
555 *Behav.* **74**, 207–218 (2007).
- 556 45. Carter, M. I. D., Bennett, K. A., Embling, C. B., Hosegood, P. J. & Russell, D. J. F. Navigating uncertain
557 waters: a critical review of inferring foraging behaviour from location and dive data in pinnipeds.
558 *Mov. Ecol.* **4**, 25 (2016).
- 559 46. Hammond, P. S., Hall, A. J. & Prime, J. H. The diet of grey seals around Orkney and other island and
560 mainland sites in north-eastern Scotland. *J. Appl. Ecol.* **31**, 340–350 (1994).
- 561 47. Beck, C. A., Iverson, S. J., Bowen, W. D. & Blanchard, W. Sex differences in grey seal diet reflect
562 seasonal variation in foraging behaviour and reproductive expenditure: evidence from
563 quantitative fatty acid signature analysis. *J. Anim. Ecol.* **76**, 490–502 (2007).
- 564 48. Hanson, N., Jones, E. L. & Harris, R. N. Multi-decadal and ontogenetic trophic shifts inferred from
565 stable isotope ratios of pinniped teeth. *Oikos* 10.1111/oik.04441 (2017).
- 566 49. Austin, D., Bowen, W. D., McMillan, J. I. & Iverson, S. J. Linking movement, diving, and habitat to
567 foraging success in a large marine predator. *Ecology* **87**, 3095–3108 (2006).
- 568 50. Aarts, G., MacKenzie, M., McConnell, B., Fedak, M. & Matthiopoulos, J. Estimating space-use and
569 habitat preference from wildlife telemetry data. *Ecography* **31**, 140–160 (2008).
- 570 51. EMODnet Seabed Habitats Consortium. EMODnet European Seabed Habitat Maps. (2016). at
571 <http://www.emodnet-seabedhabitats.eu/default.aspx/> (Date accessed: 15-02-2017)
- 572 52. Breed, G. A., Bowen, W. D. & Leonard, M. L. Behavioral signature of intraspecific competition and
573 density dependence in colony-breeding marine predators. *Ecol. Evol.* **3**, 3838–3854 (2013).
- 574 53. Hamilton, C. D., Lydersen, C., Ims, R. A. & Kovacs, K. M. Coastal habitat use by ringed seals *Pusa*
575 *hispidus* following a regional sea-ice collapse: importance of glacial refugia in a changing Arctic.
576 *Mar. Ecol. Prog. Ser.* **545**, 261–277 (2016).
- 577 54. Jones, E. L. *et al.* Patterns of space use in sympatric marine colonial predators reveal scales of
578 spatial partitioning. *Mar. Ecol. Prog. Ser.* **534**, 235–249 (2015).
- 579 55. Votier, S. C. *et al.* Effects of age and reproductive status on individual foraging site fidelity in a
580 long-lived marine predator. *Proc. R. Soc. London B Biol. Sci.* **284**, 10.1098/rspb.2017.1068 (2017).
- 581 56. Bennett, K. A., McConnell, B. J. & Fedak, M. A. Diurnal and seasonal variations in the duration and
582 depth of the longest dives in southern elephant seals (*Mirounga leonina*): possible physiological
583 and behavioural constraints. *J. Exp. Biol.* **204**, 649–662 (2001).
- 584 57. Jones, E. L. *et al.* Seal-shiping encounters: quantifying population risk and individual exposure to
585 vessel noise. *J. Appl. Ecol.* 10.1111/1365-2664.12911 (2017).
- 586 58. Bjørge, A., Øien, N., Hartvedt, S. & Bøthun, G. Dispersal and bycatch mortality in gray, *Halichoerus*
587 *grypus*, and harbor, *Phoca vitulina*, seals tagged at the Norwegian coast. *Mar. Mammal Sci.* **18**,
588 963–976 (2002).
- 589 59. Hastie, G. D. *et al.* Sound exposure in harbour seals during the installation of an offshore wind
590 farm: predictions of auditory damage. *J. Appl. Ecol.* **52**, 631–640 (2015).
- 591 60. Thompson, D. *Assessment of risk to marine mammals from underwater marine renewable devices in*
592 *Welsh waters. Annex I: Movements and diving behaviour of juvenile grey seals in areas of high tidal*

- 593 energy. *Sea Mammal Research Unit report to Welsh Government*. (2012).
- 594 61. Vincent, C., McConnel, B. J., Ridoux, V. & Fedak, M. A. Assessment of Argos location accuracy from
595 satellite tags deployed on captive gray seals. *Mar. Mammal Sci.* **18**, 156–166 (2002).
- 596 62. McConnell, B. J., Chambers, C. & Fedak, M. A. Foraging ecology of southern elephant seals in
597 relation to the bathymetry and productivity of the Southern Ocean. *Antarct. Sci.* **4**, 393–398
598 (1992).
- 599 63. Thompson, P. M. Seasonal changes in the distribution and composition of common seal (*Phoca*
600 *vitulina*) haul-out groups. *J. Zool., Lond.* **217**, 281–294 (1989).
- 601 64. Russell, D. J. F. *Changes in at-sea foraging trips of harbour seals and grey seals in south-east*
602 *Scotland. Sea Mammal Research Unit report to Scottish Government*. (2015).
- 603 65. Zuur, A. F., Ieno, E. N. & Elphick, C. S. A protocol for data exploration to avoid common statistical
604 problems. *Methods Ecol. Evol.* **1**, 3–14 (2010).
- 605 66. Fedak, M. A., Lovell, P. & Grant, S. M. Two approaches to compressing and interpreting time-depth
606 information as collected by time-depth recorders and satellite-linked data recorders. *Mar.*
607 *Mammal Sci.* **17**, 94–110 (2001).
- 608 67. EMODnet Bathymetry Consortium. EMODnet Digital Bathymetry (DTM). (2016). at
609 <http://doi.org/10.12770/c7b53704-999d-4721-b1a3-04ec60c87238/> (Date accessed: 15-02-
610 2017)
- 611 68. Ramasco, V., Barraquand, F., Biuw, M., McConnell, B. & Nilssen, K. T. The intensity of horizontal and
612 vertical search in a diving forager: the harbour seal. *Mov. Ecol.* **3**, 15 (2015).
- 613 69. Halekoh, U., Højsgaard, S. & Yan, J. The R Package geepack for Generalized Estimating Equations. *J.*
614 *Stat. Softw.* **15**, 1–11 (2006).
- 615 70. R Core Team. R: A language and environment for statistical computing. (2016). at [http://www.r-](http://www.r-project.org/)
616 [project.org/](http://www.r-project.org/) (Date accessed: 20-09-2016)
- 617 71. Wood, S. N. *Generalized additive models: an introduction with R*. (CRC Press, 2006).
- 618 72. Zuur, A. F., Ieno, E. N., Walker, N. J., Saveliev, A. A. & Smith, G. M. in *Mixed Effects Models and*
619 *Extensions in Ecology with R* (eds. Gail, M., Krickeberg, K., Samet, J., Tsiatis, A. & Wong, W.) 295–
620 321 (Springer, 2009). doi:10.1007/978-0-387-87458-6
- 621 73. Hall, A. J. & McConnell, B. J. Measuring changes in juvenile gray seal body composition. *Mar.*
622 *Mammal Sci.* **23**, 650–665 (2007).
- 623 74. Carbone, C. & Houston, A. I. The optimal allocation of time over the dive cycle: an approach based
624 on aerobic and anaerobic respiration. *Anim. Behav.* **51**, 1247–1255 (1996).
- 625 75. Lesage, V., Hammill, M. O. & Kovacs, K. M. Functional classification of harbor seal (*Phoca vitulina*)
626 dives using depth profiles, swimming velocity, and an index of foraging success. *Can. J. Zool.* **77**,
627 74–87 (1999).
- 628

629 **Acknowledgments**

630 We are grateful to Scottish Natural Heritage (SNH), Natural Resources Wales (NRW) and the Royal Society
631 for the Protection of Birds (RSPB) for permission to work on seal colonies. Special thanks to Simon Moss
632 and Matthew Bivins (Sea Mammal Research Unit; SMRU), Greg and Lisa Morgan (RSPB), and all others who
633 assisted in field work. Tags, and their deployments, were funded by the Welsh Assembly Government
634 (Welsh colonies; project no. JER3688), Marine Scotland (Stroma and Muckle Green Holm; project no.
635 CR/2009/48), the Natural Environment Research Council (NERC) (Isle of May) and SMRU Instrumentation
636 (Isle of May). MIDC studentship is co-funded by Plymouth University School of Biological & Marine Sciences
637 and NERC. DJFR, CJB & DT are supported by National Capability funding from NERC to SMRU (grant no.
638 SMRU1001). We are grateful to Dr Yuuki Watanabe and an anonymous reviewer, whose comments
639 improved the manuscript.

640

641 **Author contributions statement**

642 Conceived the study: MIDC, DJFR, CBE, KAB. Wrote the manuscript: MIDC. Contributed data: DT, KAB.
643 Processed the data: MIDC, DJFR, CJB. Analysed the data: MIDC. Advised data analysis: DJFR, CBE, PJH. All
644 authors reviewed and edited the manuscript.

645

646 **Additional information**

647 The authors declare no competing interests, financial or otherwise.

648 **Tables**

649 **Table 1: Device deployment summary information.** Tagged pup sample sizes and tag duration by
 650 deployment site and year. Trip and dive numbers given are those included in the analysis after data
 651 cleaning and restriction to 120 days after leaving the colony. Although SRDL devices recorded dives, these
 652 could not be matched to bathymetric depth data and so were excluded from dive analysis. Colonies were
 653 assigned to two geographic regions; NS = North Sea, CIS = Celtic and Irish Seas.

Deployment site (year)	Region	Device type	No. tagged seals			Mean no. locations day ⁻¹ ± SD	Total no. trips	Total no. dives
			f	m	Total			
Isle of May (2001)	NS	SRDL	5	6	11	4.5 ± 2.3	109	N/A
Isle of May (2002)	NS	SRDL	5	5	10	5.2 ± 1.7	67	N/A
Bardsey (2009)	CIS	GPS-GSM	2	0	2	35.5 ± 5.4	23	3871
The Skerries (2009)	CIS	GPS-GSM	1	2	3	33.1 ± 5.7	141	9373
The Skerries (2010)	CIS	GPS-GSM	4	1	5	57.2 ± 13.8	212	46589
Ramsey (2010)	CIS	GPS-GSM	3	4	7	37.3 ± 9.7	162	27609
Muckle Green Holm (2010)	NS	GPS-GSM	4	3	7	22.5 ± 9.6	38	7417
Stroma (2010)	NS	GPS-GSM	5	2	7	24.4 ± 4	84	7941
		Total:	29	23	52		836	102800

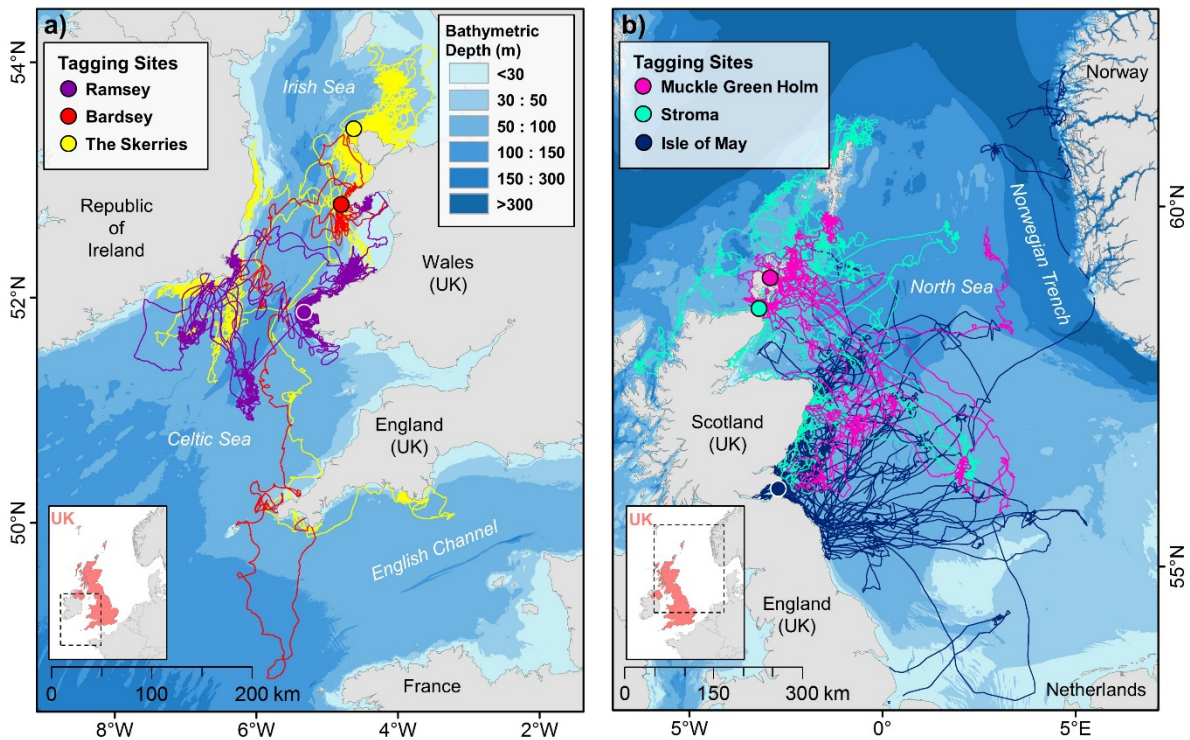
654

655 **Table 2: Model output.** Results of model simplification using backwards hypothesis testing with GEE-GAMs. Significant ($p < 0.05$) terms are shown with “*”.
 656 Interactions between variables are denoted by “:”. Where a variable was significant in an interaction, the significance of component interactions and/or individual
 657 fixed effects is not reported.

Predictor Variables	Response Variables							
	Trips		Dives (daily means)					
	Duration (Fig. 4a-b)	Distance (Fig. 4c-d)	Max. Depth (Fig. 5a-b)	Bathy. Depth (Fig. 5c-d)	Prop. Benthic (Fig. 5e-f)	Duration (Fig. 6a-b)	Prop. Bottom Time (Fig. 6c-d)	Prop. Time Diving (Fig. 6e-f)
Time	$\chi^2_3 = 15.2, p = 0.002^*$	$\chi^2_3 = 8.2, p = 0.042^*$	-	-	-	-	-	-
Sex	$\chi^2_1 = 1.4, p = 0.233$	-	-	-	$\chi^2_1 = 5.2, p = 0.023^*$	$\chi^2_1 = 2.5, p = 0.117$	-	-
Region	$\chi^2_1 = 66.1, p < 0.001^*$	-	-	-	-	-	-	-
Time : Sex	$\chi^2_3 = 3.9, p = 0.268$	$\chi^2_3 = 6.2, p = 0.1$	-	-	$\chi^2_3 = 1.1, p = 0.774$	$\chi^2_3 = 3.1, p = 0.369$	$\chi^2_3 = 3.1, p = 0.378$	$\chi^2_3 = 13.9, p = 0.003^*$
Time : Region	$\chi^2_3 = 4.1, p = 0.254$	$\chi^2_3 = 3.3, p = 0.346$	-	-	$\chi^2_3 = 13.1, p = 0.004^*$	$\chi^2_3 = 16.4, p < 0.001^*$	$\chi^2_3 = 14.9, p = 0.002^*$	$\chi^2_3 = 15, p = 0.002^*$
Region : Sex	$\chi^2_1 = 2.7, p = 0.099$	$\chi^2_1 = 4.7, p = 0.03^*$	-	-	$\chi^2_1 = 0.1, p = 0.767$	$\chi^2_1 = 0, p = 0.875$	$\chi^2_1 = 9.3, p = 0.002^*$	$\chi^2_1 = 0.02, p = 0.885$
Time : Region : Sex	$\chi^2_3 = 0.8, p = 0.852$	$\chi^2_3 = 1.4, p = 0.708$	$\chi^2_3 = 13.6, p = 0.003^*$	$\chi^2_3 = 10.4, p = 0.016^*$	$\chi^2_3 = 1.3, p = 0.74$	$\chi^2_3 = 1.9, p = 0.591$	$\chi^2_3 = 7.24, p = 0.065$	$\chi^2_3 = 4.5, p = 0.215$

658

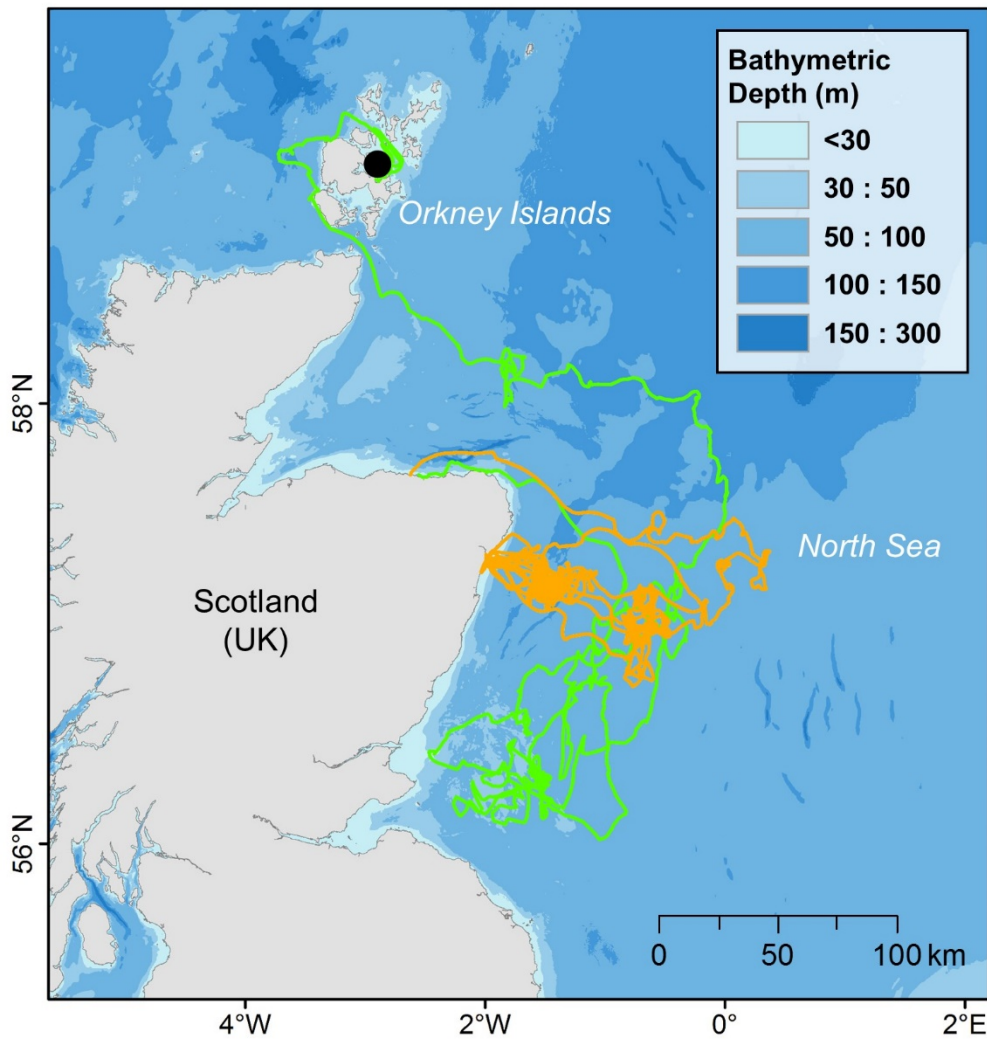
659 **Figure Captions**



660

661 **Figure 1: Pup tagging sites and trips at sea.** Pups were tagged at six colonies in the United Kingdom (UK).
662 Colonies were assigned to one of two geographic regions; (a) Celtic and Irish Seas (CIS), and (b) North Sea
663 (NS). Tracks show pup trips (n=836) during the initial four months after leaving the colony. Maps created
664 in Esri ArcMap™ 10.2.2 (<http://desktop.arcgis.com/en/arcmap/>).

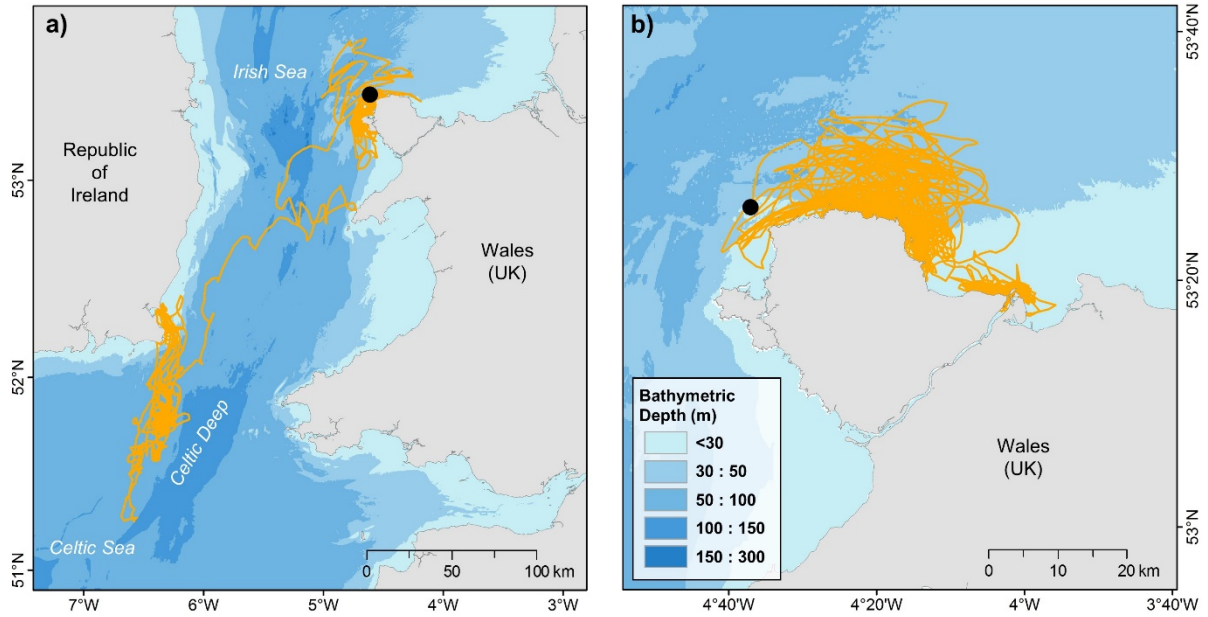
665



666

667 **Figure 2: Changes in NS pup trip behaviour with time since departing the colony.** Map shows initial
 668 exploratory trip of a pup from Muckle Green Holm, Orkney Isles (black dot), during which it did not haul-
 669 out for 64 days (green track). During the following 56 days, the pup performed repeated short-duration (5-
 670 14 days) foraging trips (gold tracks), travelling between the haul-out site and specific putative foraging
 671 areas. Map created in Esri ArcMap™ 10.2.2 (<http://desktop.arcgis.com/en/arcmap/>).

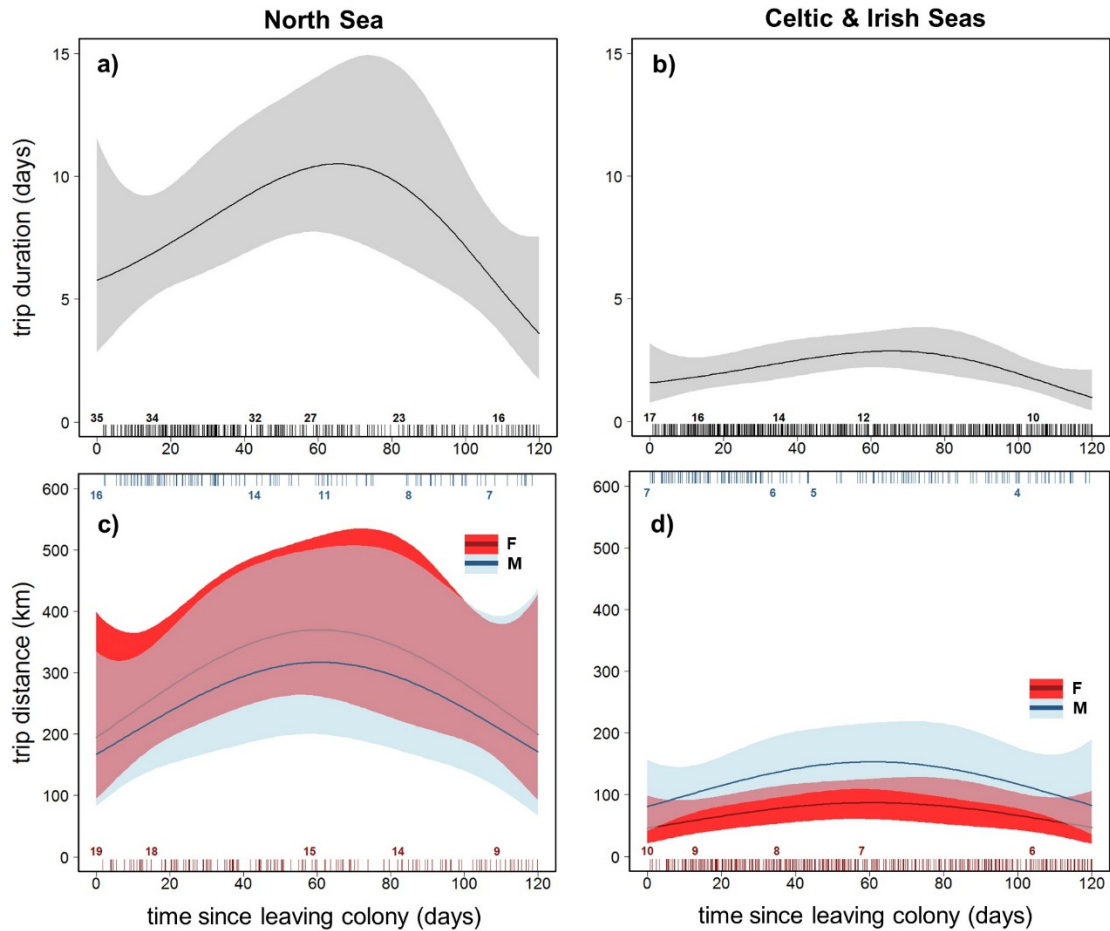
672



673

674 **Figure 3: Differences in dispersal of CIS pups.** Maps show trips of two pups from The Skerries over the
 675 first 4 months of independence. Pup (a) remains in areas adjacent to the colony (black dot) for ~50 days
 676 before dispersing to the southeast coast of Ireland, hauling-out at a popular grey seal haul-out site, and
 677 subsequently making repeated trips to putative foraging grounds on the edge of the Celtic Deep. Pup (b)
 678 remains in areas adjacent to the colony (black dot) for the entire 4 months. Maps created in Esri ArcMap™
 679 10.2.2 (<http://desktop.arcgis.com/en/arcmap/>).

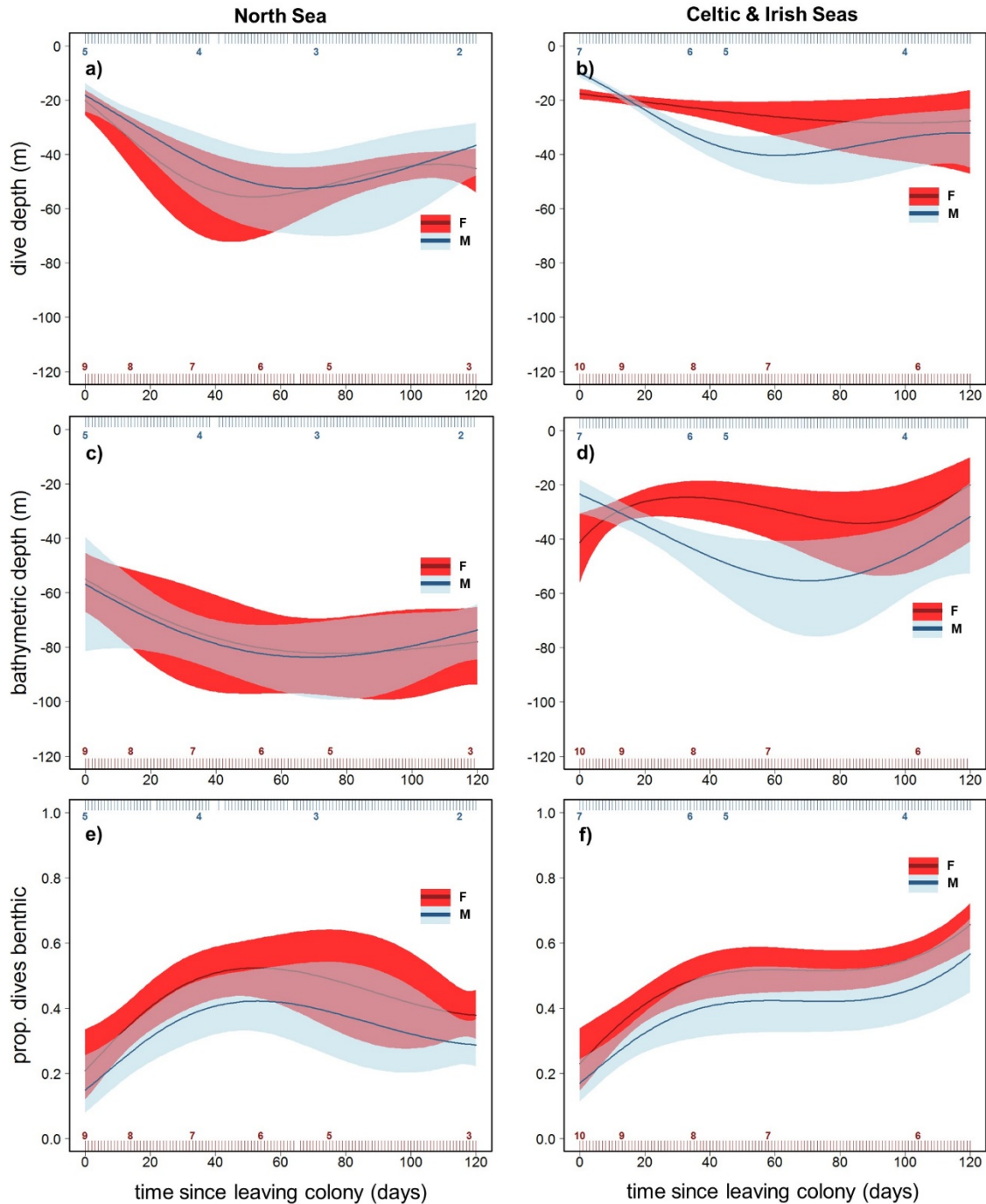
680



681

682 **Figure 4: Sex and region differences in ontogeny of trip behaviour.** Model-fitted values for trip
 683 duration (a-b) and trip distance (c-d) over time since leaving the colony. Solid lines show population mean
 684 responses by region (North Sea (NS) left, Celtic and Irish Seas (CIS) right), with associated GEE-based 95%
 685 confidence intervals (shaded areas). Pup trip behaviour changed significantly with time since departure.
 686 NS pups performed longer duration trips than CIS pups, however there was no sex difference (a-b). CIS
 687 males (d; blue) travelled further than females (red). Rug plots top and bottom show the distribution of data,
 688 colour-coded by sex, and associated numbers indicate pup sample size.

689



690

691 **Figure 5: Sex and region differences in ontogeny of dive depth.** Model-fitted values for daily mean
 692 maximum dive depth (a-b) and bathymetric depth of dive locations (c-d) over time since leaving the colony.
 693 Solid lines show population mean responses by region (North Sea (NS) left, Celtic and Irish Seas (CIS) right),
 694 with associated GEE-based 95% confidence intervals (shaded areas). Pups increased their dive depth
 695 rapidly over the initial 40 days (a-b), except for CIS females (b). NS pups dived in deeper water throughout
 696 (c). Sex differences in bathymetric depth of dive locations emerged from the outset in CIS pups, as females
 697 (red) dived in shallower areas (d). The proportion of dives that were benthic increased rapidly for all pups
 698 over the initial 40 days. However, females recorded marginally higher mean values than males in both

699 regions (e-f). Rug plots top and bottom show the distribution of data, colour-coded by sex, and associated
700 numbers indicate pup sample size.

701

702

703

704

705

706

707

708

709

710

711

