

2019-05-01

# Tyrrhenian central Italy: Holocene population and landscape ecology

Stoddart, S

<http://hdl.handle.net/10026.1/13130>

---

10.1177/0959683619826696

Holocene

SAGE Publications

---

*All content in PEARL is protected by copyright law. Author manuscripts are made available in accordance with publisher policies. Please cite only the published version using the details provided on the item record or document. In the absence of an open licence (e.g. Creative Commons), permissions for further reuse of content should be sought from the publisher or author.*

### Tyrrhenian central Italy: Holocene population and landscape ecology

Journal:	<i>The Holocene</i>
Manuscript ID	HOL-18-0129.R1
Manuscript Type:	Paper
Date Submitted by the Author:	n/a
Complete List of Authors:	<p>Stoddart, Simon; University of Cambridge, Archaeology  Woodbridge, Jessie; University of Plymouth, Geography  Palmisano, Alessio; University College London (UCL), Institute of Archaeology;  Mercuri, Anna Maria; University of Modena and Reggio Emilia, Life Sciences  Mensing, Scott; University of Nevada, Reno, Geography  Colombaroli, Daniele; Royal Holloway University of London School of Biological Sciences, Geography  Sadori, Laura; Sapienza University, Biologia Vegetale  Magri, Donatella; Sapienza University, Dip. Biologia Vegetale  Di Rita, Federico; Sapienza Università di Roma, Dip. Biologia Ambientale;</p> <p>Giardini, Marco; Sapienza University, Biologia Ambientale  Mariotti, Marta; Università di Firenze, Dipartimento di Biologia Vegetale  Montanari, Carlo; Università di Genova, Dipartimento di Scienze della Terra, dell'Ambiente e della Vita  Bellini, Cristina; Università di Genova, Laboratorio di Archeologia e Storia Ambientale; Università di Firenze, Dipartimento di Biologia Vegetale  Florenzano, Assunta; University of Modena and Reggio Emilia, Department of Life Sciences  Torri, Paola; Università degli Studi di Modena e Reggio Emilia Dipartimento di Scienze della Vita  Bevan, Andrew; University College London (UCL), Institute of Archaeology  Shennan, Stephen; UCL, Institute of Archaeology  Fyfe, Ralph; University of Plymouth,  Roberts, C. Neil; University of Plymouth, Geography</p>
Keywords:	Pollen, Vegetation, Radiocarbon, Central Italy, demography, settlement
Abstract:	<p>This paper compares changes in vegetation structure and composition (using synthetic fossil pollen data) with proxy data for population levels (including settlements and radiocarbon dates) over the course of the last ten millennia in Tyrrhenian central Italy. These data show generalised patterns of clearance of woodland in response both to early agriculturalists and urbanism, as well as the specific adoption of tree crops and variations in stock grazing. The results provide a comprehensive understanding of the development of the</p>

1  
2  
3  
4  
5  
6  
7  
8  
9  
10  
11  
12  
13  
14  
15  
16  
17  
18  
19  
20  
21  
22  
23  
24  
25  
26  
27  
28  
29  
30  
31  
32  
33  
34  
35  
36  
37  
38  
39  
40  
41  
42  
43  
44  
45  
46  
47  
48  
49  
50  
51  
52  
53  
54  
55  
56  
57  
58  
59  
60

	anthropogenised landscape of one of the most important early centres of European civilisation, showing regional trends as well as local variations.

SCHOLARONE™  
Manuscripts

1

2  
3 Tyrrhenian central Italy: Holocene population and landscape ecology  
45  
6 Stoddart, S<sup>1.</sup>, Woodbridge, J.<sup>2.</sup>, Palmisano, A.<sup>3.</sup>, Mercuri, A.-M<sup>4.</sup>, Mensing, S.<sup>5.</sup>, Colombaroli, D.<sup>6.</sup>, Sadori,  
7 L.<sup>7.</sup>, Magri, D.<sup>7.</sup>, di Rita, F.<sup>7.</sup>, Giardini, M.<sup>7.</sup>, Mariotti Lippi, M.<sup>8.</sup>, Montanari, C.<sup>9.</sup>, Bellini, C.<sup>8.</sup>, Florenzano,  
8 A.<sup>4.</sup>, Torri, P.<sup>4.</sup>, Bevan, A.<sup>3.</sup>, Shennan, S.<sup>3.</sup>, Fyfe, R.<sup>2.</sup>, Roberts, N.<sup>2.</sup>  
9

10 ss16@cam.ac.uk

11 jessie.woodbridge@plymouth.ac.uk

12 a.palmisano@ucl.ac.uk

13 annamaria.mercuri@unimore.it

14 smensing@unr.edu

15 Daniele.Colombaroli@rhul.ac.uk

16 laura.sadori@uniroma1.it

17 donatella.magri@uniroma1.it

18 federico.dirita@uniroma1it

19 marco.giardini@uniroma1.it

20 marta.mariotti@unifi.it

21 carlo.montanari@unige.it

22 cri\_mini@yahoo.com

23 assunta.florenzano@unimore.it

24 torri.paola@unimore.it

25 a.bevan@ucl.ac.uk

26 s.shennan@ucl.ac.uk

27 ralph.fyfe@plymouth.ac.uk

28 C.N.Roberts@plymouth.ac.uk  
29  
30  
3132 <sup>1</sup>Magdalene College, Cambridge, CB3 0EU, UK33 <sup>2</sup>School of Geography, Earth and Environmental Sciences, University of Plymouth, Drake Circus, Plymouth  
34 PL48AA, UK35 <sup>3</sup>Institute of Archaeology, University College London, 31-34 Gordon Square, London WC1H 0PY, UK36 <sup>4</sup>Laboratorio di Palinologia e Paleobotanica, Dipartimento di Scienze della Vita, Università di Modena e Reggio  
37 Emilia, Italy38 <sup>5</sup> Department of Geography, University of Nevada, Reno, NV 89557, USA39 <sup>6</sup> Department of Geography, Royal Holloway, University of London, TW20 0EX, UK.40 <sup>7</sup>Dipartimento di Biologia Ambientale, Università di Roma "La Sapienza", Piazzale Aldo Moro, 5, 00185, Roma,  
41 Italia42 <sup>8</sup>Dipartimento di Biologia, Università di Firenze, Via G. La Pira, 4, 50121 Firenze, Italia43 <sup>9</sup> Dipartimento di Scienze della Terra, dell'Ambiente e della Vita, Università di Genova, Genova, Italia  
44  
45

## 46 Abstract

47 This paper compares changes in vegetation structure and composition (using synthetic fossil pollen  
48 data) with proxy data for population levels (including settlements and radiocarbon dates) over the  
49 course of the last ten millennia in Tyrrhenian central Italy. These data show generalised patterns of  
50 clearance of woodland in response both to early agriculturalists and urbanism, as well as the specific  
51 adoption of tree crops and variations in stock grazing. The results provide a comprehensive  
52 understanding of the development of the anthropogenised landscape of one of the most important  
53 early centres of European civilisation, showing regional trends as well as local variations.  
54  
55  
56  
5758 Keywords: Pollen; Vegetation; Radiocarbon; Central Italy; demography; settlement  
59  
60

## Introduction

This paper investigates the potential effect of changing demography and consequent land use on vegetation cover in the region of Tyrrhenian central Italy between the early Holocene and the post-Roman period. To achieve this end, it combines high resolution pollen data as a proxy for vegetation and frequency of radiocarbon dates and frequency/size of settlement sites as a proxy for demography. It critically examines the advantages and difficulties of the large data sets that have been assembled by deploying appropriate statistical techniques. Nevertheless, recognition is given to the complexities of the relationship between numbers of sites and population levels and to the challenge of integrating independent climatic data at this stage of research.

The specific aims of this paper are to compare synthetic pollen data with reconstructed human population levels since the early Holocene for a defined and spatially-congruent region within Tyrrhenian central Italy (Fig. 1). More precisely, archaeological radiocarbon date and site frequencies are proposed as proxies of population change and compared with substantial changes in vegetation and land cover across this region. Significant steps have been taken to harmonise the comparison in a number of ways, most notably by using common 200-year time intervals, a level of precision that can be accommodated by both the archaeological and palaeoecological data. The data have been addressed at three spatial scales: 1) Tyrrhenian central Italy as a whole, 2) the scale of three sub-regions and 3) the local human community level from examples of site catchments of excavated archaeological sites that are sufficiently coeval with neighbouring pollen catchments of lake deposits. The region of Tyrrhenian central Italy has enough sites to produce regional trends and forms the main body of this paper. The data from sub-regions between the Arno and the Albegna rivers (later North Etruria), between the Albegna and the Tiber (later South Etruria) and between the Tiber and the Garigliano river (later *Latium vetus*), possess enough data to produce indicative rather than statistically significant trends. Finally, a small number of pollen sites associated with local settlement have been analysed for local developments. A number of important, sufficiently large, data sets have been assembled in this tightly defined region, both by archaeologists and palaeoecologists, to make a powerful interdisciplinary comparison of how and why population levels and vegetation assemblages changed over the last 10,000 years, at least until the end of the Roman period (see Table 1 for the chronological scheme). Thereafter, historical geography is required to bring the knowledge of settlement patterns up to the modern era (e.g. Bertacchi & Onnis 2004).

A distinctive feature of Tyrrhenian central Italy is that this was the region where two rival urban civilisations, the Etruscans and the Latins, developed over the course of the third millennium BP, with important implications for anthropogenic land use. The growth of population from c. 2900 BP, often concentrated in nucleated centres (Pacciarelli 2000; Fulminante 2014; Stoddart 2016; in press), would have required intensified exploitation of a surrounding landscape. A further distinctive feature is that this anthropogenised landscape emerged out of a setting less affected by human action during the preceding Holocene than some other parts of the Mediterranean: e.g. the Eastern Mediterranean or, for that matter, southern Italy, eastern Sicily or even Adriatic central Italy. Individual high-resolution pollen records from central Italy show intensive land use well before 2900 BP and development of disturbance-adapted vegetation at the Mesolithic-Neolithic transition, but this was often a very localized effect that was less visible at regional scale. As elsewhere in the

3

1  
2  
3 Mediterranean basin (Mercuri et al. this volume), once initiated, this trend of intensification of land  
4 use became more pronounced and generalised, first during the Etruscan period (perhaps in response  
5 to the demands of metallurgical production (Mariotti Lippi et al. 2000)) and then in the Roman  
6 period, perhaps in a more spatially extensive mode that included both lowlands and uplands. After a  
7 decline, another cycle of exploitation began in the Medieval period, and, in the lowlands, in the  
8 modern historical past.  
9  
10

11 One undoubted influence on the patterns detected here is climatic change. The study area of central  
12 Italy lies between the latitude of 42° and 44° North, just to the south of the Holocene climatic  
13 boundary at 45° North hypothesised by Peyron et al. (2017), but to the north of 40° North, the  
14 boundary originally defined by Magny et al. (2013). As remarked by these authors, this hypothesised  
15 boundary is strongly affected by the location of the restricted sample sites (Peyron et al. 2017: 256)  
16 where proxies independent of pollen have been deployed for calculating precipitation and  
17 temperature. In fact, a synthesis of Mediterranean non-palynological hydroclimate datasets by Finné  
18 et al. (this volume) fails to show any clear latitudinal boundary between the Holocene climate  
19 trajectory of northern and southern Italy. In spite of these difficulties, it has to be acknowledged that  
20 a contributing factor towards the change in vegetation outlined in this article may be a climatic  
21 switch during the mid-Holocene, between 7500 and 4000 Cal yr BP (Magny et al. 2012; Roberts et  
22 al., 2011). It is difficult at this stage to quantify in detail the changes in vegetation in response to this  
23 climatic change, which was governed by considerable regional variation within the broader global  
24 pattern (Mayewski et al. 2004), although an outline for key tree taxa across the whole of the Italian  
25 peninsula is provided by Magri et al. (2015).  
26  
27  
28  
29  
30  
31

32 In spite of these reservations, the Mediterranean hydroclimate data synthesis by Finné et al. (this  
33 volume) has revealed that records from cave and lake sites located in Italy indicate dry conditions  
34 from 10,000 until 8700 cal. yrs. BP. This was followed by a rapid switch toward wetter conditions at  
35 some sites (e.g. Lago di Pergusa, Sicily) that persisted until 6900 cal. yrs. BP. However, during this  
36 period the Italian pollen records mostly show development of dense forest formations (Magri et al.  
37 2015). A more stable climate seems to have followed, which was then succeeded by a period of  
38 increased variation between records suggesting greater sub-regional climatic variability. Two  
39 periods when climate may have played a significant role in cultural change were firstly at and after  
40 4200 Cal yr BP, and secondly around 3000 Cal yr BP. The former, the well-known 4.2 ka abrupt  
41 climate event, is very clearly marked as a period of aridity in the Grotta di Renella speleothem record  
42 from northern Tuscany (Drysdale et al. 2006), and coincides with the transition between the Late  
43 Copper Age and the Early Bronze Age. This event is marked by a clear drop in forest cover in  
44 southern and central Italy, but is not found in other areas of the Mediterranean Basin (Di Rita et al.  
45 2018). A different pattern can be identified around 3000 Cal yr BP, when most Italian hydro-climatic  
46 records indicate relatively wet conditions, at a time when the eastern Mediterranean was notably  
47 dry (Finné et al. this volume). This may be relevant to the rapid proto-urbanisation that occurred at  
48 the end of the Bronze Age in Italy (see discussion below), although the regional response of  
49 vegetation to this climate instability was rather diverse (Di Rita et al. 2018).  
50  
51  
52  
53  
54  
55  
56  
57  
58  
59  
60

### Scalar data source criticism

4

1  
2  
3 Tyrrhenian central Italy is defined for the purposes of this paper as bounded by the Arno catchment  
4 to the north, the Tiber to the east, as far south as the latitude of Rome, and then by the foothills of  
5 the Apennines, until a point at the same latitude of Monte Circeo meeting the sea south of the  
6 Pontine marshes along the course of the Garigliano river (Fig. 1).  
7  
8

9 The region of Tyrrhenian central Italy under consideration divides into three regions on geographical  
10 grounds. These same divisions were then consolidated on geopolitical grounds during the formative  
11 pre-Roman period, with consequences for all subsequent periods. *Latium vetus* (Fulminante 2014),  
12 the distinct political zone of the Latins (and the off-centre central place of Rome that gave its name  
13 to the later Roman empire) was placed to the south of the Tiber, and comprised an important  
14 volcanic province to the north with significant lowlands around the Pontine marshes to the south,  
15 collectively bordering the Apennine foothills to the east. Etruria itself (Stoddart 2016) to the north of  
16 the Tiber is geopolitically divided at this scale into two zones, separated by the Albegna river. To the  
17 south, South Etruria is distinguished by primate cities in another volcanic province, which, even if  
18 they had distinctive political trajectories and territorial sizes, broadly shared an intensity of  
19 urbanisation. To the north, North Etruria had generally a less packed, more dispersed, political  
20 landscape in a more varied geography of Plio-Pleistocene deposits, limestones, sandstones and  
21 intermontane tectonic valleys. Ideally, it would be prudent to examine these three regions  
22 separately as part of the analysis, but the size of the pollen data set does not permit a sub-division  
23 into Etruria and *Latium Vetus*. Cognisant of these limitations in the data, it is also prudent to note  
24 that the vegetational impact of the political process of South Etruria may have had more similarity  
25 with *Latium vetus* than with North Etruria, since the first two were the politically and economically  
26 most developed areas in the third millennium BP.  
27  
28  
29  
30  
31  
32

33 At a micro-scale, at least three locations of pollen sites can be interpreted as close to known  
34 concentrated settlement activity with excavated detail. In the north, Lago Massaciuccoli  
35 (Colombaroli et al. 2007; Mariotti Lippi et al. 2007a; Bellini et al. 2009) is located close to the small  
36 Etruscan site of S. Rocchino (Massarosa) (Fornaciari 1978). In the Maremma, Lago di Accesa  
37 (Colombaroli et al. 2008; Drescher-Schneider et al. 2007) was very close to the village sized Etruscan  
38 settlement of the same name (Camporeale 1997). The newly published Mezzano core (Sadori 2018)  
39 was also affected by local settlement activity but was “off-site” in the Etruscan period, illustrating  
40 the complexity of vegetational development in the landscape (see further discussion below). In the  
41 south, the Alban hills contained both the volcanic lakes of Nemi and Albano (Mercuri et al. 2002) and  
42 nucleated Latin sites, such as Alba Longa, Tusculum and Gabii (Guitoli 1982; Becker et al. 2009). The  
43 proximity of such sites to pollen cores allows us to capture not only the general picture of the  
44 landscape, but also some of the details of variation in clearance of vegetation in the neighbourhood  
45 of concentrations of population.  
46  
47  
48  
49

## 50 **Methodological source criticism**

### 51 **Pollen data set**

52  
53  
54  
55 Pollen data sets from across the Mediterranean region were extracted from the European modern  
56 and fossil pollen databases (Davis et al. 2013; Leydet 2007-2017), filtered for quality (including  
57 appropriate temporal depth) and enriched by invited contributors (including those provided by  
58 authors of this paper). Cluster-based analysis (described below) was used to identify the major  
59 spatio-temporal patterns of vegetation change across the entire Mediterranean datasets  
60

5

(Woodbridge et al. in press; Fyfe et al. 2018), using complete datasets that have been carefully taxonomically harmonised, amalgamated, chronologically-synthesised and normalised. Taxa below 1% with fewer than 50 occurrences have been removed in the analysis. We present here the results from 17 fossil pollen sites in our study region, grouped into 55 time windows (11000 BP to modern) (Fig. 1). Three of these original pollen sites (Padule, Colfiorito and Ospitale (Watson 1996)) were subsequently excluded because of their mountainous altitude (above 500 m), which also excludes them from a strict definition of Tyrrhenian central Italy. Lago Lungo was also excluded from the regional synthesis because of the dissimilar landscape in which this site is located. The inclusion of these three high altitude sites in the dataset would have resulted in patterns highly influenced by high altitude vegetation, which is not typical of the lower elevation region; therefore combining these dissimilar landscapes together in a regional synthesis was not appropriate. The full Holocene pollen record from Lago di Mezzano (Sadori 2018) was published too late for inclusion in our regional data synthesis, but is discussed in the text below.

### Modern and fossil pollen datasets

Descriptions of the methodological approaches developed and applied to the pollen datasets are provided in Woodbridge et al. (in press) and Fyfe et al. (2018). Pollen sequences with relatively reliable chronologies (Giesecke et al. 2013) were selected for analysis and new sediment core chronologies were constructed for additional records using the 'BACON' R package (Blaauw & Christen 2011). The pollen count data from each site were summed into 200-year time windows and analyses were applied to the entire Mediterranean region in order to identify key vegetation types. Analyses for a sub-set of 14 fossil pollen sequences (from 11 sites) and 37 modern pollen sites are presented in this paper for central Italy (Table 2).

### Pollen data analysis

An unsupervised data-driven approach was used to assign pollen samples to vegetation cluster groups based on the similarity of their taxa assemblages using Ward's hierarchical agglomerative clustering method (Ward 1963) within the 'rioja' R package (Juggins 2015; see Woodbridge et al. in press and Fyfe et al. 2018) for a detailed description of the cluster analysis approach developed). A phytosociological classification approach was used to identify the frequent and abundant pollen taxa within each cluster group based on their median and interquartile range (IQR). Interpretive name descriptors were given to each vegetation cluster using phytosociological classification tables along with comparisons with other classification systems, land cover types defined by remote sensing and the results of previous studies (see Woodbridge et al. in press). In order to explore major patterns in the pollen datasets, non-metric multidimensional scaling (nMDS) was applied to the data using the R 'vegan' package (Oksanen et al., 2016) and Simpson's diversity index (Simpson 1949) was calculated for each pollen sample. This index, which is frequently used to explore diversity change in pollen datasets (e.g. Morris et al. 2014) was selected because it takes both species richness and evenness into account (Simpson, 1949). Pollen indicator groups were also used to summarise key changes in the datasets. This included calculating the average arboreal pollen sum (%AP), a sum of tree crop indicators OJC (*Olea*, *Juglans*, *Castanea*) (Mercuri et al. 2013a) (also combined with *Vitis*: OJCV), calculation of an anthropogenic pollen index (API: *Artemisia*, *Centaurea*, Cichorieae and *Plantago*, cereals, *Urtica* and *Trifolium* type) (Mercuri et al. 2013b), and a sum of pastoral indicators (Asteroideae, Cichorioideae, *Cirsium*-type, *Galium*-type, Ranunculaceae and *Potentilla*-type pollen)



6

(Mazier et al. 2006). Vegetation cluster group changes were calculated as an average for all sites in the central Italy study region and plotted stratigraphically. Oleaceae was grouped with *Olea* in the OJC index; within the datasets used in this study occurrences of Oleaceae are thought to represent poorly-preserved *Olea*. Other taxa in the Oleaceae family are identified separately (e.g. *Fraxinus*, *Phillyrea* or *Jasminum*).

### Archaeological radiocarbon dataset

A total of 697 uncalibrated radiocarbon dates spanning from Late Mesolithic (10,000 BP) to the fall of the Roman Empire (1500 BP) have been identified from 170 sites and either harmonised from online sources and extant databases (e.g. BANADORA (Galate (2011), RADON (Hintz et al. 2012), University of Oxford's ORAU (ORAU 2016), EUROEVOL (Manning et al. 2015)) or, manually input from a wide range of publications such as published reports, journal articles, etc. (see Fig. 1a). All of these radiocarbon dates are from archaeological contexts, with the majority being samples of bone, charcoal and wood (see Palmisano et al. 2018; see also Supplemental material 1 for a full list of original sources). Radiocarbon dates obtained from marine samples such as shell have been removed (and are not part of the above total) to avoid the complicated issues arising from unknown or poorly understood marine reservoir offsets.

The first archaeological proxy for population levels, the summed probability distribution (SPD) of radiocarbon dates, is effective only for the period up to ~2500 BP. After that, the radiocarbon time series becomes a very unreliable proxy, because classical, medieval and modern archaeologists (and to a lesser extent protohistoric archaeologists covering 3500-2700 BP) have been very reluctant to adopt radiocarbon as a dating technique (e.g starting as far back as Ridgway 1979: 415; Peroni et al 1980, but continuing as a practice). The reasons are historical, educational, financial and practical. Material culture rules the interpretative record of these later periods and time has been ordered into precisely defined relative chronologies tied into historical dates by the cross-dating of imports. Furthermore, scientific analysis has not been part of the educational system for an arts-based archaeology. Radiocarbon dating has, until recently, been costly and perceived to be less accurate. Only since the turn of the millennium, has a combination of dendrochronology (largely external to the area) and increasingly precise AMS dating begun to transform the picture in the period centred around 3000 BP. In addition, the period affected by the 'Hallstatt plateau' in the radiocarbon correction curve (c. 2750-2350 BP) has been very little dated by radiocarbon in central Italy for the sensible reason that samples from this period are not good chronological value for money since the resulting dates on the plateau have larger timespans. In northern Europe, Bayesian approaches have begun to make an impact on the same period (Hamilton et al. 2015), and remain useful because of the relative 'fuzziness' of dating from material culture, but this revolution has yet to hit central Italy or to be perceived as advantageous. For these reasons, the SPD of radiocarbon dates is to be considered reliable for the period between 10,000 and ~2500 BP where the broad trends appear to be effective and may even provide a sounder understanding of population levels for the Neolithic (8,000 – 6,000 BP), than the more difficult interpretation of fragile, broadly dated, pottery from surface survey.

7

1  
2  
3 The probabilities from each calibrated date are combined to produce a summed probability  
4 distribution (SPD)<sup>1</sup>. The potential bias of oversampling particular site-phases has been reduced by  
5 aggregating multiple uncalibrated radiocarbon dates from the same site that are within 100 years of  
6 each other and dividing by the number of dates that fall within this bin (Timpson et al. 2014). Then,  
7 the probabilities of each bin are summed: in our case, 697 radiocarbon dates have been grouped  
8 into 364 bins. Nevertheless, it is important to point out that this approach is conservative because it  
9 is based on the assumption that a higher number of radiocarbon dates for specific site phases  
10 derives from research intensity rather than from a larger area of the site in that phase. Following  
11 previous works (Williams 2012; Weninger et al. 2015) showing that normalised calibrated dates  
12 emphasise narrow artificial peaks in SPDs due to steepening portions of the radiocarbon calibration  
13 curve, we opted to use unnormalised dates prior to summation and calibrated via IntCal13 curve  
14 (Reimer et al. 2013; see former applications of calibrated unnormalised radiocarbon dates in Bevan  
15 et al. 2017; Palmisano et al. 2017; Roberts et al. 2018).

20  
21 Finally, a logistic null model representing expected population increase has been fitted to the  
22 observed SPD in order to produce a 95% confidence envelope (composed of 1,000 random SPDs)  
23 and statistically test if the observed pattern significantly departs from this model (for the general  
24 approach, Shennan et al 2013; Timpson et al 2014; as specifically implemented in Bevan and Crema  
25 2018: modelTest, 'uncalsample'for). This theoretical null model of population change builds on the  
26 assumption that a population's *per capita* decreases to zero as population size approaches a  
27 maximum imposed by limited resources in the environment as there might be an upper bound to  
28 pre-Iron Age population growth. This model was preferred given the observed distributional shape  
29 of the SPD of radiocarbon dates in central Italy (see Fig. 2). However, it is important to bear in mind  
30 that a logistic model cannot be considered strictly as a realistic model for population growth, but  
31 rather as an elementary model useful for quantitatively testing population fluctuations (cf. Turchin  
32 2001). In this case, we preferred a logistic model to other possible null-models (e.g. uniform,  
33 exponential) given the observed shape of SPD of radiocarbon dates in our study area (see Fig. 2).  
34 Deviations above and below the 95% confidence limits of the envelope respectively indicate periods  
35 of population growth and decline greater than expected according a logistic model of population  
36 growth. Finally, a global p-value has been calculated in order to assess the significance of the total  
37 area of the observed SPD outside the confidence envelope.

43  
44 Figure 2 shows the (unnormalised) SPD of radiocarbon dates compared with a 95% envelope for a  
45 logistic null model. Deviations above (in red bands) and below (in blue bands) the null model  
46 respectively represent population growth or decline beyond that expected under a long-term logistic  
47 trend. The results show a significant overall departure of the SPD of observed data (black solid line)  
48 from the envelope of the logistic model ( $p = 0.001$ ), which indicates that population did not grow  
49 exponentially from 10,000 to 1,500 BP in central Italy. The population is greater than predicted by  
50 the logistic model in the Late Mesolithic between 9.9 – 9.5 ka BP. Nevertheless, the level of  
51 population during the late Mesolithic is low and started increasing after the onset of the Neolithic  
52 (~8000 BP). Population growth (and decline) occurred periodically during the Late  
53 Neolithic/Chalcolithic (growth ~ 5.2 ka – 4.8 ka BP; decline 4.8-4.6 ka BP; growth 4.6 – 4.4 ka BP) and  
54

55  
56  
57  
58  
59 <sup>1</sup> The analysis has been performed in R v. 3.3.3 by using the package *rcarbon* developed by Bevan and Crema  
60 (2018).

1  
2  
3 decreased significantly between 4.4 – 3.7 ka BP. An apparent crash in population occurred between  
4 3.7 and 3.5 ka BP (indicated by the vertical blue band). This dramatic change may question some  
5 current interpretations of continued growth (Bietti Sestieri 2010; Minniti 2012), and needs further  
6 research to confirm the pattern. Population then grew dramatically during the later Bronze Age (3.5  
7 – 2.8 ka BP). This measure of population may be more robust than site numbers (Fig 3b) where  
8 fluctuations in site numbers may reflect the difficulty in recognizing specific dated handle types from  
9 surface survey particularly during the Recent Bronze Age (Barker & Stoddart 1994). After this period,  
10 the population fluctuated and decreased until the fall of the Roman Empire. This decrease of  
11 population during the Roman period indicated by the SPD should be considered unreliable because  
12 it will be biased by the fact that archaeologists rely mostly on pottery types and coins to date Roman  
13 layers rather than using radiocarbon dating (see above).  
14  
15  
16  
17  
18  
19

### 20 **Archaeological site data set**

21  
22 Archaeological sites have been collected via a comprehensive review, standardisation, and synthesis  
23 of settlement data from reports and gazetteers of 59 archaeological surveys of differing intensities  
24 covering circa 10,000 square km (Palmisano et al. 2018; see also Supplemental material 1; Fig. 1b). A  
25 total of 7,074 archaeological sites were divided into 10,758 occupation phases and in what follows  
26 they are explored via a set of complementary presentational statistics. For comparison with pollen  
27 data, these were then placed into two hundred year time-slices, representing a suitable matching  
28 between the estimated occupation history of the archaeological sites and resolution of the pollen  
29 chronologies. Estimated settlement size has been recorded per each time-slice in cases where sites  
30 have been extensively excavated and/or surveyed methodically. Given the need for reliable data sets  
31 only systematic survey data that covered prehistory until the full classical period were selected  
32 where available. The analysis with this dataset cannot be continued into the medieval and modern  
33 period, since most surveys have a cut off with the classical period (with the notable exception of  
34 work by the University of Siena which was initiated by a School of Medieval Archaeology). Historical  
35 geography information would be required to take the picture up to the present day, but was not  
36 collected for this paper. In addition, certain higher quality survey datasets were also unavailable,  
37 notably the British School at Rome South Etruria survey (Patterson et al 2004), the Tuscania survey  
38 (Barker and Rasmussen 1988) and the Val Cecina survey (Terrenato 1996). Tuscania had already  
39 been considered more extensively by a *Forma Italiae* study (included here), but the loss of the South  
40 Etruria survey is a more pronounced gap. A further issue is that the Bronze Age sites have frequently  
41 been collected by a topographically targeted strategy that is distinct from systematic survey (e.g.  
42 Barbaro 2010), that probably over-represents the Final Bronze Age when compared with the earlier  
43 phases of the Bronze Age. The contributing surveys to the settlement database considered here  
44 individually have very particular characteristics which need to be acknowledged even if collectively  
45 they do not profoundly affect the overall patterns. One major source of data is the *Forma Italiae*  
46 (e.g. Morselli & Tortorici 1982) undertaken by classical archaeologists in a series of individual  
47 (square) map sheets, often centred on an ancient urban centre. In common with the work of the  
48 British School at Rome (di Gennaro & Stoddart 1982) an acknowledged bias is most probably an  
49 under-estimation of prehistoric sites in survey results based on both ceramics and lithics. Another  
50 important data source is the work of prehistorians in the suburbs of Rome (Arnoldus Huyzendveld et  
51 al. 1993). The Agro Pontino has been well covered by Dutch scholars (Attema 1993). One major  
52  
53  
54  
55  
56  
57  
58  
59  
60

1  
2  
3 Etruscan city, Cerveteri, has been explicitly studied, but only in the south eastern approaches (Enei  
4 2001). The Siena school of archaeology has undertaken extensive work in the Scarlino area (Cucini  
5 1985) and in the Chianti region (e.g. Campana 2001), with the most extensive chronological  
6 coverage. All the above approaches generally deployed a methodology of continuous coverage. One  
7 of the largest surveys was of the boundary area of the Ager Cosanus, and in this case a series of  
8 transects were implemented across the Albegna valley (Carandini & Cambi 2002). The dataset could  
9 be criticised for the diversity of these approaches, but the relatively large numbers of sites recovered  
10 permits us to hazard the conclusion that the main data trends are trustworthy, since only systematic  
11 surveys have been included<sup>2</sup>. Nevertheless, the only periods that can be compared in detail are the  
12 classical periods (Etruscan to early Roman), because of the high recognition of central classical  
13 material by all surveyors, whereas prehistoric and later Antique material require a particular  
14 specialised focus on behalf of the survey teams which was not always present.  
15  
16  
17  
18

19 In our analysis, we have broken up the settlement evidence into 43 time-slices each lasting 200 years  
20 starting with period<sub>t1</sub> (10,000 - 9,800 Cal yr BP) and ending with period<sub>t43</sub> (1,600 - 1,400 Cal yr BP).  
21 Then, we have (a) calculated sites count per time-slice, and (b) have summed the estimated site sizes  
22 for each time step in order to assess how the population changes across time every 200 years.  
23 Bearing in mind the temporal uncertainty associated with many archaeological sites, particularly  
24 sites only found by survey which result in larger or shorter time spans according to the dating  
25 precision provided by recovered archaeological artefacts, we have applied a probabilistic approach  
26 known as aoristic analysis (see former applications in Crema et al. 2010, 1118-1121; Crema 2012,  
27 446-448; Kolář et al. 2016; Orton et al. 2017; Palmisano et al. 2017, 63-65). In addition, to mitigate  
28 the discrepancy between wide chronological uncertainties and narrower likely site durations, we  
29 applied Monte Carlo methods to generate randomised start of occupation periods for sites with low-  
30 resolution information (cf. Crema 2012; Palmisano et al. 2017: 63-64).  
31  
32  
33  
34  
35

36 Figure 3 shows the frequency per 200 year time-block of 10,758 site occupation phases. In this  
37 analysis, four different proxies derived from archaeological settlement data are presented together  
38 to assess demographic trends over the long run: raw site counts, summed settlement areas, aoristic  
39 weights, and randomised site occupations. The results for all four proxies show an increase of  
40 population at the beginning of the Neolithic (~ 8000 BP) and peaks during the Late Neolithic (~ 5.5 ka  
41 BP), the Chalcolithic (~ 5.3 – 5.1 ka BP), in the early Bronze Age (c. 4300 Cal yr BP), the Middle Bronze  
42 Age (3.6 – 3.3 ka BP), and the Early Iron Age (3.1 -2.7 ka BP), and the Late Republican/Early Imperial  
43 Roman period (2100 – 1900 Cal yr BP). These peaks are punctuated by deep population declines  
44 between 5.0 – 4.5 ka BP and 4.1 – 3.8 ka BP. The first of these broadly agrees with the radiocarbon  
45 evidence (Fig. 2), but the second occurs several hundred years earlier than a similar trough indicated  
46 by the radiocarbon evidence (Fig. 2); the second trough may have been affected by the  
47 topographically targeted survey strategy which has most probably promoted the importance of the  
48 Final Bronze Age (seen in Barbaro 2010), compared with the earlier phases of the Bronze Age. We  
49 recognise the considerable debate on the relationship between archaeological record, settlement  
50 numbers, settlement size and absolute population numbers (Stoddart 1999; Drennan et al. 2015),  
51 but have taken statistical precautions to reduce the uncertainty.  
52  
53  
54  
55  
56  
57

58  
59 <sup>2</sup> For a comprehensive list of archaeological surveys carried out in the study area see Palmisano *et al.* 2018 and  
60 Supplemental material 1.

### Statistical comparison of population and vegetation change

The demographic proxies (SPD of radiocarbon dates, aoristic sum, and raw count, estimated total size) are binned into 200-year time slices to match the time windows used in the analysis of pollen sequences. We also calculated the median of the envelope of the randomised start date of sites, which is the result of 1,000 randomised runs, and binned this into 200-year time slices. This step provides a measurement comparable with the other demographic and environmental proxies. A pairwise Spearman's Rank correlation matrix between pollen indicators and archaeological demographic proxies for the period from 10,000 to 1400 Cal yr BP is given on Table 3. Spearman's correlations between all demographic proxies indicate strong positive correlation ( $p$ -value < 0.001) and suggest that the archaeological data depict similar population dynamics over the long run. Pollen indicators such as *Olea*, OJC, OJCV, API and regional grazing are strongly positively correlated with the demographic proxies, indicating that cultivated trees and pastoral activities increase with a higher population. The percentage of Arboreal pollen (AP) is negatively correlated with population, which means that woodland clearance occurs when population grows. The results here described provide us with a *longue durée* picture during the Holocene. In order to have a better understanding of the human impact on the landscape, we adopted a moving window approach.

The advantage of this approach is that it does not just provide a single global correlation statistic, but instead allows for the identification of particular periods of correspondence and divergence between human population size and land cover from the Late Mesolithic to the fall of the Roman Empire (10,000 – 1400 Cal yr BP). A 2000 year-time moving window Spearman's correlation has been employed, with ten 200-year bins in each time window. This analysis has been performed for all archaeological proxies versus six pollen indicator groups (see Supplemental Material 2: Tables S1-S6). In addition, cross correlation analysis has been performed in order to assess if one time-series "causes" changes in another and if they occur with a defined time-lag between each other (in this case a lag unit of 200 years). Cross-correlation values have been indicated in the Supplemental Material 2 (Tables S1-S6) only for those 2000-year time windows showing significant Spearman's correlations.

The results in Supplemental Material 2 (Table S1) show that population is negatively correlated with arboreal (tree) pollen, especially during the Neolithic when population starts increasing, but tree cover appears to be decreasing, after the introduction of farming. Other strong negative correlations occur in the later periods (LBA, IA and Roman). One archaeological proxy (estimated total area) shows a cross correlation with negative lags (-1) in those time windows encompassing the Neolithic, indicating that the increase of population precedes the decrease of arboreal pollen by 200 years. Nevertheless, it is important to point out that most of the correlations have a lag equal to 0 indicating contemporaneity between demographic trends and vegetation change. This is also due to the fact that our 200-year resolution is quite coarse for assessing successfully if there are time lags between demographic proxies and pollen indicators.

The results in Supplemental Material 2 (Tables S2 and S3) show a strong positive correlation between demographic trends and OJC pollen from the Chalcolithic onwards (~4600 Cal yr BP and after). In some archaeological proxies, the increase of population delayed by 200 years the increase of OJC pollen. Lesser correlations occur between our population proxy and the Anthropogenic Pollen Index (Supplemental Material 2: Table S5). The SPD of radiocarbon dates show negative

11

1  
2  
3 correlations with the API (Anthropogenic Pollen Index) in the Late Mesolithic and Early Neolithic as  
4 well as during a period encompassing the Late Neolithic and the Early Bronze Age (~5500 – 3500 Cal  
5 yr BP). Only one archaeological proxy (Total area) shows a strong positive correlation with the API  
6 within a time window encompassing a time period from the Chalcolithic to the Iron Age (4800 –  
7 2800 Cal yr BP). Supplemental Material 2 (Table S6) shows strong positive correlations between  
8 demographic proxies and regional pastoral indicators in the Neolithic and in the later periods (from  
9 Chalcolithic to Early Bronze Age).  
10  
11  
12

#### 13 **Comparative Regional Analysis for Tyrrhenian central Italy (Fig. 4).**

14  
15 Over the period up to 3000 Cal yr BP, some useful and credible trends can be noted. Population  
16 levels were very low until the advent of farming at ~ 8000 Cal yr BP. Hunter-gatherer activity is  
17 broadly associated with low population levels, except in zones of rich biomass (e.g. NW coast of  
18 North America) although hunter-gatherers are known to have engaged in deliberate management of  
19 local vegetation (e.g. California) (Kelly 2013). In this period, it can, therefore, be readily assumed that  
20 climate rather than human impact was the main external operative factor on the vegetation  
21 patterns (Orain et al. 2013). In the subsequent Neolithic period, the pollen record may indicate the  
22 presence of human populations when archaeological data do not register the same density. In other  
23 contexts, the transition to farming is generally assumed to bring a more incisive impact on  
24 vegetation. However, the advent of farming was generally lower in its impact on Tyrrhenian central  
25 Italy and later than in the rest of the peninsula (Skeates 1994; Radi Petrinelli Pannocchia 2018). In  
26 other parts of the peninsula, there were lighter soils and reliable rain fed agriculture with the  
27 construction of major ditched enclosures in zones such as the Tavoliere and the Catania plain  
28 (Malone 2003). In Tyrrhenian central Italy, sites tended to be smaller and adopt a broad spectrum  
29 exploitation of the landscape close to perennial water sources, particularly lakes and water courses  
30 (Malone 2003: 267-8; Fugazzola Delpino et al. 1993; Malone et al. 1992; Bellini et al. 2008; 2009).  
31 Emmer wheat and barley were often supplemented by collected foods and sheep/goat, cattle and  
32 pig, supplemented by wild boar and red deer hunting. There does appear to have been greater  
33 intensity of production in the Later Neolithic and the extension of settlement onto heavier soils,  
34 although much of this evidence currently derives from the Adriatic seaboard of central Italy (Malone  
35 2003). Additionally, the patterns detectable in the radiocarbon data allow us tentatively to detect a  
36 boom-bust pattern of rising and falling populations which has been identified elsewhere in Europe  
37 (Shennan et al. 2013). A similar observation has been made in recent studies of the island of Malta  
38 (French et al. in preparation).  
39  
40  
41  
42  
43  
44  
45  
46

47 The broad trends traced from the archaeological data ring true in terms of wider archaeological  
48 understanding: a flat demographic curve until the take-off of urbanism at the end of the second  
49 millennium BC. The more detailed analysis (Fig. 4) shows a drop in inferred population at the  
50 beginning of the Bronze Age (~4000 Cal yr BP) and again this matches more general expectations.  
51 Nevertheless, the low inferred population of this period contrasts with the situation registered in the  
52 Po Plain with the Terramara culture (Cremaschi et al. 2016), and may also be an effect of the  
53 selection of sites based on the presence of radiocarbon dates. However, these demographic trends  
54 had a less evident impact on the vegetational landscape than the longer term trends responding to  
55 the clearance for agriculture. Some of the preference for wet conditions for agriculture,  
56 accompanied by a more wide-ranging use of the landscape, may have continued even into the  
57 Bronze Age in areas such as the Arno catchment (Mariotti Lippi et al. 2010; Giachi et al. 2010). Most  
58  
59  
60

1  
2  
3 importantly, the main increase in tree crops in this region occurred after 2.8 ka BP (i.e. in the  
4 Etruscan/Latin period) coincident with a further decline in woodland cover, and this can be related  
5 to key changes in olive oil and wine production, detectable in material culture practices and trade,  
6 largely from the many tombs of the elite (e.g. Naso 2000; see results in Tables S1-S3). This is clearly  
7 reflected by the pollen-derived OJC index for cultivated trees (Fig. 5; Supplemental Material 2: Table  
8 S3). The direct evidence is tantalisingly scarce because of the lack of systematic flotation of  
9 archaeological deposits, but carbonised seeds of grape and olive have been found from both urban  
10 and rural sites (Stevens 2000; Perkins & Attolini 1992; Mariotti Lippi et al. 2002; Bowes et al. 2015;  
11 Malone et al. 2014). Another expansion of tree crops, related to chestnut, is known historically in the  
12 more upland parts of Tyrrhenian Italy during the Medieval period. The peaks in pastoral indicators  
13 that occurred at 5000 and 2500 Cal yr BP in the later Neolithic and mid Etruscan periods  
14 respectively, were more episodic and more difficult to compare with the archaeological record.  
15 However, some Late Neolithic and early Chalcolithic communities have been associated with an  
16 increase in mobility and pastoralism and the vegetational record may support this interpretation.  
17 There has been much discussion in the archaeological literature over the chronological depth of  
18 transhumance (Barker 2005) beyond the clear historical evidence from the medieval period. It is  
19 difficult to contribute in detail to this debate from the evidence presented here. However, we can  
20 note that by the late Bronze Age (c. 3000 BP), the dominance of ovicaprids had become a long-term  
21 trend which only became more balanced with cattle and pig in the full urban period (De Grossi  
22 Mazzorin 2006). The vegetational change in the mid Etruscan period may thus relate to a new  
23 relationship between city and countryside, where, for a short period, extensive stock raising became  
24 more important. The short-lived expansion of pastoral activity shown by the pollen may thus suggest  
25 a multi-faceted approach to agricultural intensification at the peak of Etruscan power in the middle  
26 of the third millennium BP (Supplemental material 2: Table S6).

27  
28 In the later periods, the pastoralism appears to have expanded and this is matched by historical and  
29 ethnographic studies of transhumance in historical times (Barker 1989). More generally, at a  
30 broader scale, archaeo-demographic data show clear boom-and-bust cycles. There seem to have  
31 been two main long cycles (~6000-4000 and ~3500-1500 Cal yr BP) prior to Medieval times,  
32 presumably followed by a third cycle in the last 1200 years, for which archaeo-demographic data are  
33 not available, because of the nature of the field survey evidence, but which can be noted in the  
34 documentary records (e.g. Wickham 1988). A fourth boom has taken place in lowland areas in the  
35 post war period. Within the regional synthesis of records from Italy, there are no clear patterns  
36 evident between the average palaeoclimate z-scores, pollen-inferred vegetation change and the  
37 archaeo-demographic trends (Fig. 5). However, the amalgamation of datasets across the region  
38 leads to loss of information related to sub-regional climatic trends. Records from the north of Italy  
39 suggest that conditions became drier during the last 4000 years (Finné et al. this volume; see also  
40 discussion above). This coincides with periods of population expansion and increased agricultural  
41 activity, and suggests agricultural practices may have persisted throughout phases of drier climatic  
42 conditions. However, the complexity of interactions between human activity and natural  
43 environmental changes are highlighted within studies from individual sites located in Italy (e.g. Allen  
44 et al. 2002) and other studies highlight climate as having important impacts on vegetation change  
45 (e.g. Finsinger et al. 2010).

46  
47 The most striking general regional trends relate to woodland. The cluster group 'fir forest', which  
48 represents an *Abies*-dominated mixed woodland, declined at 9000 Cal yr BP, except at altitude,  
49  
50  
51  
52  
53  
54  
55  
56  
57  
58  
59  
60

13

perhaps driven by data drawn from the pollen and charcoal records at Massaciuccoli and Accesa in northern Tyrrhenian Italy. The results are also supported by simulation approaches (Tinner et al. 2013, Henne et al. 2015) where slash and burn probably took place. The pollen-derived cluster groups comprise combinations of taxa that may represent opening of the landscape in response to human disturbance. Although beech woods are not well represented in Fig. 4, *Fagus* (beech) is also represented in other cluster groups. *Fagus* has a median value of >30% in cluster 8.3 (beech woods) but is also represented in cluster 7.0 (fir forest) with a median of 6% and cluster 8.1 (alder woods) with a median of 3%. Furthermore, the pasture/wetland cluster (3.0) is actually dominated by sedge (Cyperaceae) and although parkland/grassland (1.4) has a median value >30% for Poaceae, this is accompanied by evergreen *Quercus* (8%) and other minor taxa. Deciduous oak woodlands dominated the early record until 7500-7000 Cal yr BP when they were replaced by a more open landscape that retains some oaks as well as an increase in *Alnus*. These changes may be connected with the start of farming that led to the increase in oak parkland and also represents woody-steppe vegetation, which after 6700 BP was potentially related to woodland management by early farming communities (cf. Supplemental Material 2: Table S1). Pine woods only occur very late in the record and intermittently earlier (represented by clusters 8.2 (coniferous forest) and 4.0 (pine forest)). Alder wood communities (based on *Alnus Incana*) increased in prominence from 7000 Cal yr BP and are known to respond positively to disturbances (Colombaroli et al. 2007). Non deciduous oak arboreal communities were more episodic, appearing and disappearing in frequency in the pollen record.

### Comparative Pollen Site Analysis

Plots of individual pollen records (Figs. 6 and 7) demonstrate which sites are driving key changes in the region synthesis plots (Figs. 4 and 5), such as the early part of Massaciuccoli, which shows the presence of fir forest, while the API represents natural landscapes in the early part of some records, such as Lago dell'Accesa. In the Massaciuccoli area (Colombaroli et al. 2007; Mariotti Lippi et al. 2007a; Bellini et al. 2009) in the lower Arno valley, near the Etruscan site of S. Rocchino (Massarossa), wetlands were present in the valley bottom and on the coast (shown by hydrophilous species), and the current open landscape on the hillslopes (with dominance of low maquis or garrigue, i.e. *Phillyrea*, *Erica* sp., *Juniperus*) was only established in the Roman period, even if anthropogenic fire disturbance is recorded as early as 6000 Cal yr BP. In the Accesa area (Drescher-Schneider et al. 2007), some slight clearance was noticed as early as the Mesolithic (~8900 Cal yr BP), followed by a more notable clearance in the early and Middle Neolithic (~8000-6600 Cal yr BP), with replacement of the former evergreen oak vegetation by deciduous oak forest and open shrublands (Colombaroli et al. 2008; 2009, Vanniere et al. 2008,) following slash and burn activities. The impact in the subsequent Bronze Age appears to have been reduced. The amount of open land does not appear to change drastically during the Etruscan period, and it was only with the foundation of a settlement near to Accesa in ~2550 Cal yr BP that a clearing can be interpreted locally. At Lago di Mezzano (not shown in Figs 6 and 7), a first anthropogenic clearance phase occurred during Bronze Age times (3700-3000 Cal yr BP), followed by woodland regeneration, with more permanent forest clearance and cultivation of tree crops only during Medieval and post-Medieval times (Sadori 2018). This pattern appears to reflect local as much as regional land cover changes, as confirmed by the presence of archaeological sites and finds inside the lake at a time when its water level was lower than today. None the less, other inland sites, such as Lago Lungo



(Mensing et al. 2015) also highlight the importance of the early Medieval period in human land cover transformation away from the coast.

The southern Latial lakes of Albano and Nemi appear to show major changes in human-caused vegetation shifts (Mercuri et al. 2002) and cereals that start with the Neolithic (c. 7000 Cal yr BP), register a new increase from ~3000 Cal yr BP with the introduction of tree crops and show the highest impact in the early Roman period, although there are earlier noticeable effects and fluctuations. These lakes were relatively close to urban centres such as Tusculum, Alba Longa and Gabii. The record from Lake Vico in South Etruria appears only to show appreciable woodland clearance and cereals from about 2.6 ka BP (Magri & Sadori 1999), perhaps responding to its more marginal location with respect to settlement and greater protection from the surrounding agricultural landscape. However, this is not detected in the pollen-inferred vegetation clusters, which highlights the importance of understanding site level characteristics. The record from the Lake Lagaccione shows some clearance at about 3.7 ka BP (Magri 1999) but is unfortunately truncated in its upper part when the area might have been influenced by the development of the relatively short lived urban centre of Bisenzio (Babbi 2016). Stracciacappa is unfortunately another truncated sequence that offers no information after 7200 Cal yr BP when it was still heavily wooded (Giardini 2007). Fortunately, Lago di Mezzano is located close to Lagaccione and extends the pollen record up to modern times (Sadori 2018). The pollen record from Stagno di Maccarese (Di Rita et al. 2010; 2015) shows a clear human impact on the landscape, documented by a peak of micro-charcoal concentrations and cereal-type pollen, contemporary with the nearby middle Chalcolithic settlement of Le Cerquete-Fianello, dated between 5.4 and 4.9 ka BP. After a period of human abandonment of the area, an increase around 2.6 ka BP in pollen of the Chenopodiaceae family that contains species adapted to growing in saline environments marks the usage of the basin as salt works by the local Etruscan populations. After 2.4 ka BP, when the Romans took control of the salt works, and especially in Imperial time, signs of human activities are documented by high values of API and OJCV.

## Conclusions

The current paper corroborates some interpretations and challenges others. The impact of the classical period (Etruscan and early to early imperial Roman) on the human and natural landscape has been both confirmed and given extra nuance. The Etruscan impact on the landscape was noteworthy, but highly varied, both between South and North Etruria and in the vicinity of known sites. The Roman impact was more pervasive. On the other hand, the apparently low level of activity in the Neolithic and Bronze Age from purely archaeological evidence may need to be challenged by the vegetational evidence, as changes can be noted in woodland composition and density, as well as in the SPD data, that were not apparent from the site counts.

This analysis of Tyrrhenian central Italy exhibits some general trends that appear to combine human and climatic effects: on the one hand a warm climatic period in Roman times was preceded in the third millennium BP and succeeded in the first and second millennia BP by periods of cooler climate (according to Benvenuti et al. 2006 and Büntgen et al. 2016), and there is further evidence of drier conditions from 5500 BP (Marchetto et al. 2008); on the other hand, there was substantial local variation that would have been a response to the local intensification of human intervention, depending on the level of settlement size and urbanisation. Some river regimes persistently suffered from flood risk (Benvenuti et al. 2010; 2006). More open woodland increased over time,

15

1  
2  
3 starting in the Neolithic, which may initially have largely taken the form of small clearings often in  
4 well-watered locations such as San Marco (Valley of Gubbio) and La Marmotta (Lago di Bracciano).  
5 Pastoralism was probably an increasing feature of the Late Neolithic and Early Bronze Age, although  
6 the degree of long distance transhumance cannot be assessed from the data presented here.  
7 Urbanisation would have led to more intensive exploitation of the landscape, but, in its initial stages,  
8 this would have encompassed considerable local variation, both at a regional scale (less developed  
9 North Etruria vs intensive South Etruria vs intensive *Latium vetus*), and between individual cities as  
10 shown by the variation in the relationship between the urban centre and the degree of rural  
11 settlement (Stoddart 2016). Tree crops accompanied the establishment of the first larger towns or  
12 cities after 3000 Cal yr BP, when, for the first time, fixed food resources tied to the land could have  
13 been more easily protected. As already emphasised, these broad trends conceal substantial local  
14 differences. In northern Tyrrhenian Italy, in the context of less developed rural settlement, the open  
15 landscape was probably only established in the Roman period. In the southern Tyrrhenian region, in  
16 the context of long-established and intense urbanism, the impact on the local landscape was felt  
17 much earlier, in the third millennium BP. In the Roman period, many of these effects would have  
18 become more generalised, declined with the reduction of political power in late antiquity, and then  
19 revived with the rise of the independent city states of the Medieval and Renaissance period. We  
20 know from other evidence not considered here that the uplands have been extensively abandoned  
21 in the late modern period, but the lowlands have recently been intensely farmed, in response to the  
22 political economy of the European Union.  
23  
24  
25  
26  
27  
28  
29

### 30 Acknowledgements

31  
32 This work is the result of a workshop held in Mallorca in September 2017 under the auspices of the  
33 Leverhulme Trust funded project "*Changing the Face of the Mediterranean: Land Cover and*  
34 *Population Since the Advent of Farming*" (Grant Ref. RPG-2015-031), a Plymouth-UCL collaboration.  
35 We are grateful to Joan Estrany and the University of the Balearic Islands for helping to host this  
36 workshop. Pollen data were extracted from the European Pollen Database (EPD;  
37 <http://www.europeanpollendatabase.net/>) and amalgamated from the work of data contributors.  
38 The EPD community is gratefully acknowledged and gratitude is given to Michelle Leydet (the EPD  
39 manager), and many data contributors who have made a valuable contribution to this research.  
40  
41  
42  
43  
44

### 45 Data

46  
47 Archaeological data sets used in this work for modelling demographic trends can be found in the  
48 journal data paper by Palmisano *et al.* (2018) and UCL Discovery online repository:  
49 <https://doi.org/10.14324/000.ds.1575442>  
50  
51  
52  
53

### 54 References

55  
56 Alessandri, L., 2016. Hierarchical and federative polities in protohistoric Latium Vetus. An analysis of Bronze Age  
57 and Early Iron Age settlement organization. In: P. Attema, J. Seubers, and S. Willemsen (eds.), *Early states,*  
58 *territories and settlements in protohistoric Central Italy.* Corollaria Crustumina 2. Groningen: Groningen  
59 Institute of Archaeology  
60

- 1  
2  
3 Allen, J.R.M, Watts, W.A, McGee, E. & Huntley, B (2002) Holocene environmental variability—the record from Lago  
4 Grande di Monticchio, Italy. *Quaternary International*: 88, 69-80.  
5
- 6 Arnoldus Huyzendveld, A., Bietti Sestieri, A. M., De Rossi, G., Foschi, A., Giacobbe, M., Giacomini, L., Mantero, D.,  
7 Nonnis, D., Panu, B. E., Preite, A., Sebastiani, R., Tomassetti, A. & Ventrelli, M. 1993. *L'area archeologica a*  
8 *Sud di Roma*. (Comune di Roma, Assessorato alla Cultura, Centro di coordinamento didattico 63). Roma:  
9 Fratelli Palombi Editori.
- 10
- 11 Attema, P. 1993. *An archaeological survey in the Pontine region. A contribution to the early settlement history of*  
12 *south Lazio 900 - 100 BC. Vol. I: Text*. Groningen: Archeologisch Centrum Groningen.  
13
- 14 Attema, P., Burgers, G.J. & Leusen, M.V., 2010. *Regional pathways to complexity: settlement and land-use dynamics*  
15 *in early Italy from the Bronze Age to the Republican period*. Amsterdam: Amsterdam University Press.  
16
- 17 Babbi, A. 2016. Bisenzio between proto-history and the archaic period: the Research Project. In Della Fina, G. M.  
18 (ed.) *Dalla Capanna al Palazzo. Edilizia abitativa nell'Italia preromana*. (Annali della Fondazione per il  
19 Museo «Claudio Faina» 24). Roma: Quasar, 169-86.  
20
- 21 Barbaro, B. 2010. *Insedimenti, aree funerari ed entita territoriali in Etruria meridionale nel Bronzo Finale*. Firenze:  
22 All'Insegna del Giglio.  
23
- 24 Barker, G. 1989. The archaeology of the Italian shepherd. *Transactions of the Cambridge Philosophical Society* 215:  
25 1-19.  
26
- 27 Barker, G. 2005. Agriculture, pastoralism and Mediterranean landscapes in prehistory. In Blake, E. & Knapp, B.  
28 (eds.), *The archaeology of Mediterranean prehistory*. Oxford: Blackwell, 46-76.  
29
- 30 Barker, G. & Rasmussen, T. 1988. The archaeology of an etruscan polis: a preliminary report on the Tuscania  
31 project. 1986 and 1987 seasons. *Papers of the British School at Rome* 56: 25-42.  
32
- 33 Barker, G. & Stoddart, S. K. F. 1994. The Bronze Age of Central Italy: c. 2000-900 BC. In Mathers, C. & Stoddart, S.  
34 (eds.), *Development and Decline in the Mediterranean Bronze Age*. Sheffield: J.R. Collis Publications, 145-  
35 66.  
36
- 37 Becker, J. A., Mogetta, M. & Terrenato, N. 2009. A new plan for an ancient Italian city: Gabii Revealed. *American*  
38 *Journal of Archaeology* 113 (4): 629-42.  
39
- 40 Bellini, C., Mariotti Lippi, M., Mori Secci, M., Aranguren, B. & Perazzi, P. 2008. Plant gathering and cultivation in  
41 prehistoric Tuscany (Italy). *Vegetation History and Archaeobotany* 17: 103-12.  
42
- 43 Bellini, C., Mariotti Lippi, M. & Montanari, C. 2009. The Holocene landscape history of the NW Italian coasts. *The*  
44 *Holocene* 19: 1161-72.  
45
- 46 Benvenuti, M., Mariotti Lippi, M., Pallecchi, P. & Sagri, M. 2006. Late-Holocene catastrophic floods in the terminal  
47 Arno River (Pisa, Central Italy) from the story of a Roman riverine harbour. *The Holocene* 16 (6): 863-76.  
48
- 49 Benvenuti, M., Bellini, C., Censini, G., Mariotti Lippi, M., Pallecchi, P. & Sagri, M. 2010. Floods, Mudflows,  
50 Landslides: Adaptation of Etruscan-Roman Communities to Hydrogeological Hazards in the Arno River  
51 Catchment (Tuscany, Central Italy). In Martini, I. P. & Chesworth, W. (eds.), *Landscapes and societies:*  
52 *selected cases*. Dordrecht: Springer, 187-201.  
53
- 54 Bertacchi, A. & Onnis, A. 2004. Changes in the Forested Agricultural Landscape of the Pisan Hills (Tuscany, Italy).  
55 In Mazzoleni, S., Di Pasquale, G., Mulligan, M., Di Martino, P. & Rego, F. (eds.), *Recent Dynamics of the*  
56 *Mediterranean Vegetation and Landscape*. Chichester: Wiley & Sons Ltd, 167-78.  
57
- 58 Bevan, A. & Crema, E.R. 2018) rcarbon v1.2.0: Methods for calibrating and analysing radiocarbon dates. URL:  
59 <https://CRAN.R-project.org/package=rcarbon>  
60

17

- 1  
2  
3 Bevan, A., Colledge, S., Fuller, D., Fyfe, R., Shennan, S. & Stevens, C., 2017. Holocene fluctuations in human  
4 population demonstrate repeated links to food production and climate. *Proceedings of the National*  
5 *Academy of Sciences* 114 (49), E10524-E10531.  
6  
7 Bietti Sestieri, A. M. 2010. *L'Italia nell'età del bronzo e del ferro*. Roma: Carocci editore.  
8  
9 Blaauw, M. & Andrés Christen, J. 2011. Flexible Paleoclimate Age-Depth Models Using an Autoregressive Gamma  
10 Process. *Bayesian Analysis* 6 (3): 457-74.  
11  
12 Bowes, K., Mercuri, A. M., Rattighieri, E., Rinaldi, R., Arnoldus-Huyzendveld, A., Ghisleni, M., Grey, C., Mackinnon,  
13 M., & Vaccaro, E. 2015. Palaeoenvironment and land use of Roman peasant farmhouses in southern  
14 Tuscany, *Plant Biosystems* 149: 174-184.  
15  
16 Büntgen U., Myglan V. S., Ljungqvist F.C. et al. 2016. Cooling and societal change during the Late Antique Little Ice  
17 Age from 536 to around 660 AD. *Nature Geoscience* 9, 231-36.  
18  
19 Campana, S. 2001. *Murlo. Carta archeologica della Provincia di Siena. Vol. V*. Siena: Nuova Immagine.  
20  
21 Camporeale, G. 1997. *L'abitato etrusco dell'Accesa: il quartiere B*. (Archaeologica 122). Roma: G. Bretschneider.  
22  
23 Carandini, A. & Cambi, F. (eds.). 2002. *Paesaggi d'Etruria: Valle dell'Albegna, Valle d'Oro, Valle del Chiarone, Valle*  
24 *del Tafone : progetto di ricerca italo-britannico seguito allo scavo di Settefinestre*. Roma: Edizioni di storia  
25 e letteratura.  
26  
27 Colombaroli, D., Marchetto, A. & Tinner, W. 2007. Long-term interactions between Mediterranean climate,  
28 vegetation and fire regime at Lago di Massaciuccoli (Tuscany, Italy). *Journal of Ecology* 95: 755-70.  
29  
30 Colombaroli, D., Vannière, B., Chapron, E., Magny, M. & Willy, T. 2008. Fire vegetation interactions during the  
31 Mesolithic Neolithic transition at Lago dell'Accesa, Tuscany, Italy. *The Holocene* 18: 679-92.  
32  
33 Colombaroli, D., Tinner, W., Van Leeuwen, J., Noti, R., Vescovi, E., Vannière, B., Magny, M., Schmidt, R. & Bugmann,  
34 H. 2009. Response of broadleaved evergreen Mediterranean forest vegetation to fire disturbance during  
35 the Holocene: Insights from the peri-Adriatic region. *Journal of Biogeography* 36, (2): 314-26.  
36  
37 Crema, E. R., Bevan, A., & Lake, M., 2010. A probabilistic framework for assessing spatio-temporal point patterns in  
38 the archaeological record. *Journal of Archaeological Science* 37, 1118-1130.  
39  
40 Crema, E.R., 2012. Modelling temporal uncertainty in archaeological analysis. *Journal of Archaeological Method*  
41 *and Theory* 19(3), 440-461.  
42  
43 Crema, E.R., & Bevan, A., 2018. rcarbon v1.1.2 : Methods for calibrating and analysing radiocarbon dates URL:  
44 <https://CRAN.R-project.org/package=rcarbon>  
45  
46 Cremaschi, M., Mercuri, A. M., Torri, P., Florenzano, A., Pizzi, C., Marchesini, M., & Zerboni, A. 2016. Climate change  
47 versus land management in the Po Plain (Northern Italy) during the Bronze Age: new insights from the  
48 VP/VG sequence of the Terramara Santa Rosa di Poviglio. *Quaternary Science Reviews* 136: 153-172.  
49  
50 Cucini, C. 1985. Topografia del territorio delle valli del Pecora e dell'Alma. In Francovich, R. (ed.) *Scarlino I. Storia e*  
51 *territorio*. Firenze: All'Insegna del Giglio, 147-320.  
52  
53 Davis, B. A. S., Zanon, M., Collins, P., Mauri, A., Bakker, J., Barboni, D., Barthelmes, A., Beaudouin, C., Bjune, A. E.,  
54 Bozilova, E., Bradshaw, R. H. W., Brayshay, B. A., Brewer, S., Brugiapaglia, E., Bunting, J., Connor, S. E., de  
55 Beaulieu, J.-L., Edwards, K., Ejarque, A., Fall, P., Florenzano, A., Fyfe, R., Galop, D., Giardini, M., Giesecke, T.,  
56 Grant, M. J., Guiot, J. e., Jahns, S., Jankovska, V., Juggins, S., Kahrman, M., Karpinska-Kołodziej, M.,  
57 Kołodziej, P., Köhl, N., Kunes, P., Lapteva, E. G., Leroy, S. A. G., Leydet, M., Guiot, J., Jahns, S., Jankovska, V.,  
58 Juggins, S., Kahrman, M., Karpinska-Kołodziej, M., Kołodziej, P., Köhl, N., Kunes, P., Lapteva, E., Leroy, S.  
59 A. G., Leydet, M., López Sáez, J. A., Masi, A., Matthias, I., Mazier, F., Meltsov, V., Mercuri, A. M., Miras, Y.,  
60 Mitchell, F. J. G., Morris, J. L., Naughton, F., Nielsen, A. B., Novenko, E., Odgaard, B., Ortu, E., Overballe-

- Petersen, M. V. s., Pardoe, H. S., Peglar, S. M., Pidek, I. A., Sadori, L., Seppä, H., Severova, E., Shaw, H., Świąta-Musznicka, J., Theuerkauf, M., Tonkov, S., Veski, S., van der Knaap, W. O., van Leeuwen, J. F. N., Woodbridge, J., Zimny, M. & Kaplan, J. O. (2013) The European modern pollen database (EMPD) project. *Vegetation History and Archaeobotany* 22: 521-30.
- De Grossi Mazzorin, J. 2006. Il quadro attuale delle ricerche archeozoologiche in Etruria e nuove prospettive di ricerca. In Curci, A., Vitali, D. & Penzo, A. (eds.), *Animali tra uomini e dei: archeozoologia del mondo preromano: atti del convegno internazionale, 8-9 novembre 2002*. Bologna: Ante quem, 77-96.
- di Gennaro, F. & Stoddart, S. K. F. 1982. A review of the evidence for prehistoric activity in part of South Etruria. *Papers of the British School at Rome* 50: 1-21.
- Di Rita, F., Celant, A. & Magri, D. 2010. Holocene environmental instability in the wetland north of the Tiber delta (Rome, Italy): sea-lake-man interactions. *Journal of Paleolimnology* 44: 51-67.
- Di Rita, F., Celant, A., Milli, S. & Magri, D. 2015. Lateglacial–early Holocene vegetation history of the Tiber delta (Rome, Italy) under the influence of climate change and sea level rise. *Review of Palaeobotany and Palynology* 218: 204–16.
- Di Rita, F., Fletcher, W. J., Aranbarri, J., Margaritelli, G., Lirer, F. & Magri, D. 2018. Holocene forest dynamics in central and western Mediterranean: periodicity, spatio-temporal patterns and climate influence. *Scientific Reports* 8: 8929. <https://doi.org/10.1038/s41598-018-27056-2>.
- Drennan, R. D., Berrey, C. A. & Peterson, C. E. 2015. *Regional settlement demography in archaeology*. Clinton Corners, New York: Eliot Werner Publications, Inc.
- Drescher-Schneider, R., de Beaulieu, J.-L., Magny, M., Walter-Simonnet, A., Bossuet, G., Millet, L., Brugiapaglia, E. & Drescher, A. 2007. Vegetation history, climate and human impact over the last 15,000 years at Lago dell'Accesa (Tuscany, central Italy). *Vegetation History and Archaeobotany* 16: 279–99.
- Drysdale, R., Zanchetta, G., Hellstrom, J., Maas, R., Fallick, A., Pickett, M., Cartwright, I. & Piccini, L. 2006. Late Holocene drought responsible for the collapse of Old World civilizations is recorded in an Italian cave flowstone. *Geology* 34: 101-4.
- Enei, F. 2001. *Progetto Ager Caerentanus. Il litorale di Alsium*. (Ricognizioni archeologiche nel territorio di Ladispoli, Cerveteri e Fiumicino). Ladispoli: Comune di Ladispoli - Regione Lazio.
- Finsinger, W., Colombaroli, D., De Beaulieu, J.-L., Valsecchi, V., Vannièrè, B., Vescovi, E., Chapron, E., Lotter, A. F., Magny, M. & Tinner, W. 2010. Early to mid-Holocene climate change at Lago dell'Accesa (central Italy): climate signal or anthropogenic bias? *Journal of Quaternary Science* 25 (8): 1239–47.
- Fornaciari, G. 1978. Il Villaggio di S. Rocchino presso Viareggio. Storia di un insediamento costiero Ligure-Etrusco. *Rivista dell'Artiglio* 4: 1-3 (?).
- French, C., Farrell, M., Hunt, C., Malone, C., Schembri, P. J., McLaughlin, R., Stoddart, S. & Vella, N. (eds.). in preparation. *Environment and human landscape of the Maltese islands 6500 BC – 2100 AD*. Cambridge: McDonald Institute.
- Fugazzola Delpino, M. A., d'Eugenio, G. & Pessina, A. 1993. La Marmotta (Anguillara Sabazia, Roma): un abitato perilacustre di età neolitica. *Bullettino di Paleontologia italiana* 84 (n.s. 1): 181-341.
- Fulminante, F. 2014. *The urbanisation of Rome and Latium Vetus. From the Bronze Age to the Archaic Era*. Cambridge: Cambridge University Press.
- Fyfe, R. M., Woodbridge, J. & Roberts, N. 2018. Trajectories of change in Mediterranean Holocene vegetation through classification of pollen data. *Vegetation History and Archaeobotany* 27: 351-64.

19

- Galate, P. 2011. BANADORA. *Banque de données des dates radiocarbone de Lyon pour l'Europe et le Proche-Orient*. Université Claude Bernard, Lyon: [Internet] <http://www.archeometrie.mom.fr/banadora/>.
- Giachi, G., Mori Secci, M., Pignatelli, O., Gambogi, P. & Mariotti Lippi, M. 2010. The prehistoric pile-dwelling settlement of Stagno (Leghorn, Italy): wood and food resource exploitation. *Journal of Archaeological Science* 37: 1260-8.
- Giardini, M. 2007. Late Quaternary vegetation history at Stracciaccia (Rome, central Italy). *Vegetation History and Archaeobotany* 16: 301-16.
- Giesecke, T., Davis, B., Brewer, S., Finsinger, W., Wolters, S., Blaauw, M., de Beaulieu, J.-L., Binney, H., Fyfe, R. M., Gaillard, M.-J., Gil-Romera, G., van der Knaap, W. O., Kunes, P., Kühl, N., van Leeuwen, J. F. N., Leydet, M., Lotter, A. F., Ortu, E., Semmler, M. & Bradshaw, R. H. W. 2013. Towards mapping the late Quaternary vegetation change of Europe. *Vegetation History and Archaeobotany* 23: 75-86.
- Grove, A. T. & Rackham, O. 2001. *The nature of Mediterranean Europe: an ecological history*. New Haven: Yale University Press.
- Guaitoli, M. 1982. Gabii. Osservazioni sulle fasi di sviluppo dell'abitato. *Quaderni dell'Istituto di Topografia antica dell'Università di Roma* 9: 23-57.
- Guidi, A., & Piperno, 1993. *Italia preistorica*. Bari: Laterza
- Henne, P. D., Elkin, C., Franke, J., Colombaroli, D., Caló, C., La Mantia, T., Pasta, S., Conedera, M., Dermody, O. & Tinner, W. 2015. Reviving extinct Mediterranean forest communities may improve ecosystem potential in a warmer future. *Frontiers in Ecology and the Environment* 13 (7): 356-62.
- Kolář, J., Macek, M., Tkáč, P. & Szabó, P., 2016. Spatio-Temporal Modelling As A Way to Reconstruct Patterns of Past Human Activities. *Archaeometry* 58(3), 513-528.
- Hamilton, W. D., Haselgrove, C. & Gosden, C. 2015. The impact of Bayesian chronologies on the British Iron Age. *World Archaeology* 47 (4): 642-60.
- Juggins, S. 2015. 'Rioja': *Analysis of Quaternary Science Data, R package version (0.9-9)*. (<http://cran.r-project.org/package=rioja>).
- Kelly, R. L. 2013. *The lifeways of hunter-gatherers: the foraging spectrum*. Cambridge: Cambridge University Press.
- Leydet, M. 2007-2017. *The European Pollen Database*. (online: <http://www.europeanpollendatabase.net/>). Accessed: Oct. 2017.
- Magri, D. 1999. Late-Quaternary vegetation history at Lagaccione near Lago di Bolsena (central Italy). *Review of Palaeobotany and Palynology* 106: 171-208.
- Magri, D., Agrillo, E., Di Rita, F., Furlanetto, G., Pini, R., Ravazzi, C. & Spada, F. 2015. Holocene dynamics of tree taxa populations in Italy. *Review of Palaeobotany and Palynology* 218: 267-84.
- Magny, M., Peyron, O., Sadori, L., Ortu, E., Zanchetta, G., Vannièrè, B. & Tinner, W. 2012. Contrasting patterns of precipitation seasonality during the Holocene in the south- and north-central Mediterranean. *Journal of Quaternary Science* 27 (3): 290-6.
- Magny, M., Combourieu-Nebout, N., de Beaulieu, J. L., Bout-Roumazielles, V., Colombaroli, D., Desprat, S., Francke, A., Joannin, S., Ortu, E., Peyron, O., Revel, M., Sadori, L., Siani, G., Sicre, M. A., Samartin, S., Simonneau, A., Tinner, W., Vannièrè, B., Wagner, B., Zanchetta, G., Anselmetti, F., Brugiapaglia, E., Chapron, E., Debret, M., Desmet, M., Didier, J., Essallami, L., Galop, D., Gilli, A., Haas, J. N., Kallel, N., Millet, L., Stock, A., Turon, J. L. & Wirth, S. 2013. North-south palaeohydrological contrasts in the central Mediterranean during the Holocene: tentative synthesis and working hypotheses. *Climate of the Past* 9 (5): 2043-71.

- 1  
2  
3 Malone, C. 2003. The Italian Neolithic: a synthesis of research. *Journal of World Prehistory* 17 (3): 235-312.  
4  
5 Malone, C., Stoddart, S., Barker, G., Coltorti, M., Costantini, L., Giorgi, J., Clark, G., Harding, J., Hunt, C., Reynolds, T.,  
6 & Skeates, R. 1992. The Neolithic site of San Marco, Gubbio (Perugia), Umbria: survey and excavation,  
7 1985-7. *Papers of the British School at Rome* 60: 1-69.  
8  
9 Malone, C., Stoddart, S., Ceccarelli, L., Cencioli, L., Duff, P., McCormick, F., Morales, J., Armstrong, S., Bates, J.,  
10 Bennett, J., Cameron, J., Cifani, G., Cohen, S., Foley, T., Fulminante, F., Hill, H., Mattacchioni, L., Neil, S.,  
11 Rosatelli, A., Redhouse, D. & Volhard-Dearman, S. 2014. Beyond feasting: consumption and life style  
12 amongst the invisible Etruscans. In Boyle, K., Rabett, R. & Hunt, C. (eds.), *Living in the Landscape. Essays*  
13 *in honour of Graeme Barker*. Cambridge: McDonald Institute, 257-66.  
14  
15 Manning, K., Timpson, A., Colledge, S., Crema, E. & Shennan, S. 2015. The cultural evolution of Neolithic Europe.  
16 EUROEVOL dataset. Available at: <http://discovery.ucl.ac.uk/1469811/> (accessed 01/05/2018).  
17  
18 Marchetto, A., Colombaroli, D. & Tinner, W. 2008. Diatom response to mid-Holocene climate change in Lago di  
19 Massaciuccoli (Tuscany, Italy). *Journal of Paleolimnology* 40 (1): 235-45.  
20  
21 Mariotti Lippi, M., Giachi, G., Paci, S. & Di Tommaso, P. L. 2000. Studi sulla vegetazione attuale e passata della  
22 Toscanameridionale (Follonica – Italia) e considerazioni sull’impatto ambientale dell’attività metallurgica  
23 etrusca nel VI–V secolo a.C. *Webbia* 55 (2): 279–95.  
24  
25 Mariotti Lippi, M., Di Tommaso, P. L., Giachi, G., Mori Secci, M. & Paci, S. 2002. Archeo-botanical investigations  
26 into an etruscan farmhouse at Pian d’Alma (Grosseto, Italy). *Atti della Società Toscana di Scienze Naturali*  
27 *(Serie B)* 109: 159-65.  
28  
29 Mariotti Lippi, M., Guido, M., Menozzi, B. I., Bellini, C. & Montanari, C. 2007a. The Massaciuccoli Holocene pollen  
30 sequence and the vegetation history of the coastal plains by the Mar Ligure (Tuscany and Liguria, Italy).  
31 *Vegetation History and Archaeobotany* 16: 267-77.  
32  
33 Mariotti Lippi, M., Bellini, C., Trinci, C., Benvenuti, M., Pallecchi, P. & Sagri, M. 2007b. Pollen analysis of the ship site  
34 of Pisa San Rossore, Tuscany, Italy: the implications for catastrophic hydrological events and climatic  
35 change during the late Holocene. *Vegetation History and Archaeobotany* 16: 453–65.  
36  
37 Mayewski, P. A., Rohling, E. E., Stager, J. C., Karlén, W., Maasch, K. A., Meeker, L. D., Meyerson, E. A., Gasse, F., van  
38 Kreveld, S., Holmgren, K., Lee-Thorp, J., Rosqvist, G., Rack, F., I Staubwasser, M., Schneider, R. R. & Steig,  
39 E. J. 2004. Holocene climate variability. *Quaternary Research* 62: 243-55.  
40  
41 Mazier, F., Galop, D., Brun, C. & Buttler, A. 2006. Modern pollen assemblages from grazed vegetation in the  
42 western Pyrenees, France: a numerical tool for more precise reconstruction of past cultural landscapes.  
43 *Holocene* 16: 91-103.  
44  
45 Mensing, S.A., Tunno, I., Sagnotti, L., Florindo, F., Noble, P., Archer, C. et al. 2015. 2700 years of Mediterranean  
46 environmental change in central Italy: a synthesis of sedimentary and cultural records to interpret past  
47 impacts of climate on society. *Quaternary Science Reviews* 116: 72–94:  
48  
49 Mercuri, A. M., Bandini Mazzanti, M., Florenzano, A., Montecchi, M. C. & Rattighieri, E. 2013a. Olea, Juglans and  
50 Castanea: The OJC group as pollen evidence of the development of human-induced environments in the  
51 Italian peninsula. *Quaternary International* 303: 24-42.  
52  
53 Mercuri, A. M., Bandini Mazzanti, M., Florenzano, A., Montecchi, M. C., Rattighieri, E. & Torri, P. 2013b.  
54 Anthropogenic pollen indicators (API) from archaeological sites as local evidence of human-induced  
55 environments in the Italian peninsula. *Annali di Botanica* 3: 143–53.  
56  
57 Mercuri, A. M., Accorsi, C. A. & Bandini Mazzanti, M. 2002. The long history of Cannabis and its cultivation by the  
58 Romans in central Italy, shown by pollen records from Lago Albano and Lago di Nemi. *Vegetation History*  
59 *and Archaeobotany* 11: 263-76.  
60

21

- 1  
2  
3 Minniti, C. 2012. *Ambiente, Sussistenza e articolazione sociale nell' Italia Centrale tra Bronzo Medio e Primo Ferro*  
4 (British Archaeological Reports International Series 2394). Oxford: Archaeopress.  
5
- 6 Morris, E. K., Caruso, T., Buscot, F., Fischer, M., Hancock, C., Maier, T. S., Meiners, T., Müller, C., Obermaier, E., Prati,  
7 D., Socher, S. A., Sonnemann, I., Wäschke, N., Wubet, T., Wurst, S. & Rillig, M. C. 2014. Choosing and  
8 using diversity indices: insights for ecological applications from the German Biodiversity Exploratories.  
9 *Ecology and Evolution* 4: 3514-24.  
10
- 11 Morselli, C. & Tortorici, E. 1982. *Ardea, Forma Italiae, Regio I- Volumen XVI*. Firenze: Leo S. Olschki.  
12
- 13 Naso, A. 2000. The Etruscan aristocracy in the Orientalizing period: Culture, Economy, relations. In Torelli, M. (ed.)  
14 *The Etruscans*. Milan: Bompiani, 111-29.  
15
- 16 Oksanen, J., Blanchet, F. G., Friendly, M., Kindt, R., Legendre, P., McGlenn, D., Minchin, P. R., O'Hara, R. B., Simpson,  
17 G. L., Solymos, P., Stevens, M. H. H., Szoecs, E. & Wagne, H. 2016. 'Vegan': *Community Ecology Package. R*  
18 *package version 2.4-1*.  
19
- 20 ORAU 2016. Oxford Radiocarbon Accelerator Unit (ORAU) database. Available at: <https://c14.arch.ox.ac.uk/>.  
21
- 22 Orton, D., Morris, J. & Pipe, A., 2017. Catch Per Unit Research Effort: Sampling Intensity, Chronological  
23 Uncertainty, and the Onset of Marine Fish Consumption in Historic London. *Open Quaternary*, 3(1), 1-20.  
24
- 25 Pacciarelli, M. 2000. *Dal villaggio alla città: la svolta protourbana del 1000 a.C. nell'Italia tirrenica*. (Grandi contesti  
26 e problemi della protostoria italiana 4). Firenze: All'insegna del Giglio.  
27
- 28 Palmisano, A., Bevan, A. & Shennan, S., 2017. Comparing archaeological proxies for long-term population  
29 patterns: An example from central Italy. *Journal of Archaeological Science* 87, 59-72.  
30
- 31 Palmisano, A., Bevan, A. & Shennan, S., 2018. Regional Demographic Trends and Settlement Patterns in Central  
32 Italy: Archaeological Sites and Radiocarbon Dates. *Journal of Open Archaeology Data*. 6(1), p.2. DOI:  
33 <http://doi.org/10.5334/joad.43>  
34
- 35 Patterson, H., Di Giuseppe, H. & Witcher, R. 2004. Three South Etruria 'Crises': First results of the Tiber Valley  
36 Project. *Papers of the British School at Rome* 72: 1-36.  
37
- 38 Perkins, P. & Attolini, I. 1992. An Etruscan farm at Podere Tartuchino. *Papers of the British School at Rome* 60: 71-  
39 134.  
40
- 41 Peroni, R., Carancini, G. L., Bergonzi, G., Lo Schiavo, F. & Von Eles, P. 1980. Per una definizione critica di facies  
42 locali: nuovi strumenti metodologici. In Peroni, R. (ed.) *Il Bronzo Finale in Italia*. Bari: De Donato, 9-87.  
43
- 44 Peyron, O., Combourieu-Nebout, N., Brayshaw, D., Goring, S., Andrieu-Ponel, V., Desprat, S., Fletcher, W., Gambin,  
45 B., Ioakim, C., Joannin, S., Kotthoff, U., Kouli, K., Montade, V., Pross, J., Sadori, L. & Magny, M. 2017.  
46 Precipitation changes in the Mediterranean basin during the Holocene from terrestrial and marine pollen  
47 records: a model-data comparison. *Climate of the Past* 13 (3): 249-65.  
48
- 49 Radi, G. & Petrinelli Pannocchia, C. 2018. The beginning of the Neolithic era in Central Italy. *Quaternary*  
50 *International*. 470: 270-84.  
51
- 52 Rajala, U., 2013. The concentration and centralization of late prehistoric settlement in central Italy: the evidence  
53 from the Nepi Survey. *Papers of the British School at Rome* 81, 1-38.  
54
- 55 Reimer, P. J., Bard, E., Bayliss, A., Beck, J. W., Blackwell, P. G., Bronk Ramsey, C., Buck, C. E., Cheng, H., Edwards, R. L.,  
56 Friedrich, M., Grootes, P. M., Guilderson, T. P., Hafliðason, H., Hajdas, I., Hatté, C., Heaton, T. J., Hoffmann,  
57 D. L., Hogg, A. G., Hughen, K. A., Kaiser, K. F., Kromer, B., Manning, S. W., Niu, M., Reimer, R. W., Richards,  
58 D. A., Scott, E. M., Southon, J. R., Staff, R. A., Turney, C. S. M. & van der Plicht, J. 2013. IntCal13 and  
59 Marine13 radiocarbon age calibration curves 0-50,000 Years cal BP. *Radiocarbon* 55 (4): 1869-87.  
60



22

- 1  
2  
3  
4  
5  
6  
7  
8  
9  
10  
11  
12  
13  
14  
15  
16  
17  
18  
19  
20  
21  
22  
23  
24  
25  
26  
27  
28  
29  
30  
31  
32  
33  
34  
35  
36  
37  
38  
39  
40  
41  
42  
43  
44  
45  
46  
47  
48  
49  
50  
51  
52  
53  
54  
55  
56  
57  
58  
59  
60
- Ridgway, D. & Ridgway, F., R (eds.) 1979. *Italy before the Romans. The Iron age, Orientalizing and Etruscan periods*. London: Academic Press.
- Roberts, N., Brayshaw, D., Kuzucuoglu, C., Perez, R. and Sadori, L. 2011. The mid-Holocene climatic transition in the Mediterranean: causes and consequences. *The Holocene* 21, 3-13.
- Roberts, N., Woodbridge, J., Bevan, A., Palmisano, A., Shennan, S. & Asouti, E., 2017. Human responses and non-responses to climatic variations during the last glacial-interglacial transition in the eastern Mediterranean. *Quaternary Science Reviews* 184, 47-67.
- Sadori, L. 2018 The Lateglacial and Holocene vegetation and climate history of Lago di Mezzano (central Italy). *Quaternary Science Reviews* 202, 30-44
- Shennan, S., Downey, S. S., Timpson, A., Edinborough, K., Colledge, S., Kerig, T., Manning, K. & Thomas, M. G. 2013. Regional population collapse followed initial agriculture booms in mid-Holocene Europe. *Nature Communications*: DOI: 10.1038/ncomms3486.
- Simpson, E. H. 1949. Measurement of diversity. *Nature*: 163: 688.
- Skeates, R. 1994. Towards an absolute chronology for the Neolithic in central Italy. In Skeates, R. & Whitehouse, R. (eds.), *Radiocarbon Dating and Italian Prehistory*. London: British School at Rome - Accordia Research Centre, 61-72.
- Stevens, C. 2000. Plant remains. *Papers of the British School at Rome* 67: 330-3.
- Stoddart, S. 1999. Beyond historical demography: the contribution of archaeological survey. In Bintliff, J. & Sbonias, K. (eds.), *Reconstructing Past population trends in Mediterranean Europe*. Oxford: Oxbow, 129-31.
- Stoddart, S. 2016. Power and Place in Etruria. In Manuel Fernández-Götz, M. & Krausse, D. (eds.), *Eurasia at the Dawn of History: Urbanization and Social Change*. Cambridge: Cambridge University Press, 304-18.
- Stoddart, S. in press. *Power and Place in Etruria. The spatial dynamics of a Mediterranean civilisation. 1200-500 B.C.* Cambridge: Cambridge University Press.
- Terrenato, N. 1996. Visibility and Site Recovery in the Cecina Valley Survey, Italy. *Journal of Field Archaeology* 23: 91-109.
- Timpson, A., Colledge, S., Crema, E., Edinborough, K., Kerig, T., Manning, K., Thomas, M.G. and Shennan, S., 2014. Reconstructing regional population fluctuations in the European Neolithic using radiocarbon dates: a new case-study using an improved method. *Journal of Archaeological Science* 52, 549-557.
- Tinner, W., Colombaroli, D., Heiri, O., Henne, P. D., Steinacher, M., Untenecker, J., Vescovi, E., Allen, J. R. M., Carraro, G., Conedera, M., Joos, F., Lotter, A. F., Luterbacher, J., Samartin, S. & Valsecchi, V. 2013. The past ecology of *Abies alba* provides new perspectives on future responses of silver fir forests to global warming. *Ecological Monographs* 83 (4): 419-39.
- Turchin, P. 2001. Does population ecology have general laws? *Oikos* 94 (1): 17-26.
- Ward, J. H. 1963. Hierarchical grouping to optimize an objective function. *Journal of the American Statistical Association* 58: 236-44.
- Watson, C. S. 1996. The vegetational history of the northern Apennines, Italy: information from three new sequences and a review of Regional vegetational change. *Journal of Biogeography* 23 (6): 805-41.
- Weninger, B., Clare, L., Jöris, O., Jung, R. & Edinborough, K., 2015. Quantum theory of radiocarbon calibration. *World Archaeology*, 47(4), 543-566.

23

1  
2  
3 Williams, A.N., 2012. The use of summed radiocarbon probability distributions in archaeology: a review of  
4 methods. *Journal of Archaeological Science*, 39(3), 578-589.

5  
6 Wickham, C. 1988. *The mountains and the city. The Tuscan Appennines in the early Middle Ages*. Oxford: Clarendon  
7 Press.

8  
9 Woodbridge J., Roberts, N. & Fyfe, R. (in review) Pan-Mediterranean Holocene vegetation and land-cover  
10 dynamics from synthesised pollen data. *Journal of Biogeography*.

11  
12  
13  
14  
15  
16  
17  
18  
19  
20  
21  
22  
23  
24  
25  
26  
27  
28  
29  
30  
31  
32  
33  
34  
35  
36  
37  
38  
39  
40  
41  
42  
43  
44  
45  
46  
47  
48  
49  
50  
51  
52  
53  
54  
55  
56  
57  
58  
59  
60

## Figures

**Fig. 1.** Map showing the a) distribution of archaeological radiocarbon samples and b) archaeological sites and pollen archive sites (the yellow polygons indicate the boundary of the archaeological surveys).

**Fig. 2.** Summed Probability Distribution (SPD) of unnormalised calibrated radiocarbon dates (solid line) vs. a fitted logistic model (95% Monte-Carlo confidence grey envelope) of population growth.

**Fig. 3.** a) Comparison of raw site count (solid line), summed settlement areas (red line), aoristic sum (dashed line), and randomised site start dates (grey envelope) from 10 to 1.5. ka BP; b) Inset of population change between 10 and 2.8 ka BP.

**Fig. 4** Pollen-inferred vegetation cluster groups (11,000 BP – modern) for Tyrrhenian central Italy compared with proxy archaeological data.

**Fig. 5** Pollen indicator groups: arboreal pollen (%AP), sum of *Olea*, *Juglans*, *Castanea* and *Vitis* (O/OJC/OJCV), anthropogenic pollen index (API), and pastoral indicators averaged for all sites in the study area (11,000 BP to modern) compared with proxy archaeological data. Regional average z-scores are presented for 14 palaeoclimate records from across Italy (for further information about the palaeoclimate datasets see Finné et al., this volume).

**Fig. 6** Arboreal Pollen % (AP%) plotted in the x-axis for each pollen site plotted with cluster analysis derived vegetation cluster (symbols) (11000 BP – present) for sites in the case study region and 4

24

1  
2  
3 additional sites from dissimilar landscapes (Lago Lungo, Ospitale, Lago Padule and Lago Pratignano)  
4 excluded from the regional synthesis.  
5

6  
7 Fig. 7 a) Anthropogenic Pollen Index (API) and b) OJC (*Olea*, *Castanea* and *Juglans*) index plotted for  
8 individual pollen sites (11000 BP – present) for sites in the case study region and 4 additional sites  
9 from dissimilar landscapes (Lago Lungo, Ospitale, Lago Padule and Lago Pratignano) excluded from  
10 the regional synthesis.  
11  
12  
13  
14  
15  
16  
17  
18  
19  
20  
21  
22  
23  
24  
25  
26  
27  
28  
29  
30  
31  
32  
33  
34  
35  
36  
37  
38  
39  
40  
41  
42  
43  
44  
45  
46  
47  
48  
49  
50  
51  
52  
53  
54  
55  
56  
57  
58  
59  
60

For Peer Review

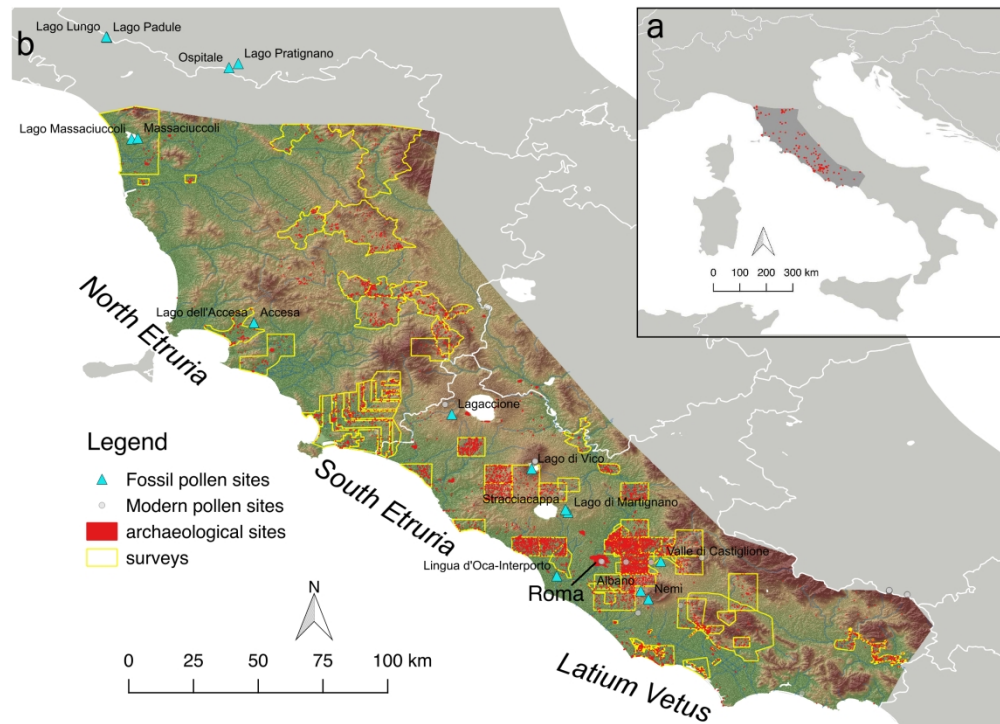


Fig. 1. Map showing the a) distribution of archaeological radiocarbon samples and b) archaeological sites and pollen archive sites (the yellow polygons indicate the boundary of the archaeological surveys).

231x166mm (299 x 299 DPI)

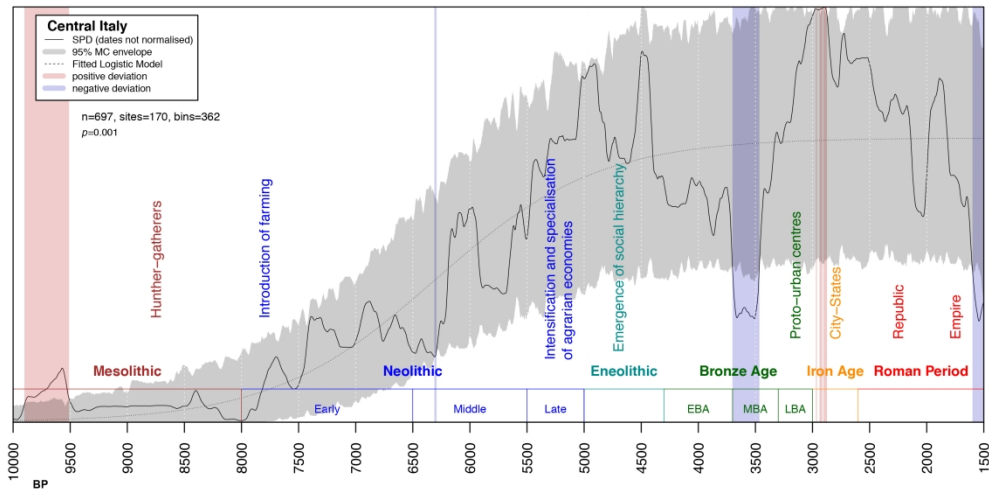


Fig. 2. Summed Probability Distribution (SPD) of unnormalised calibrated radiocarbon dates (solid line) vs. a fitted logistic model (95% Monte-Carlo confidence grey envelope) of population growth.

251x124mm (300 x 300 DPI)

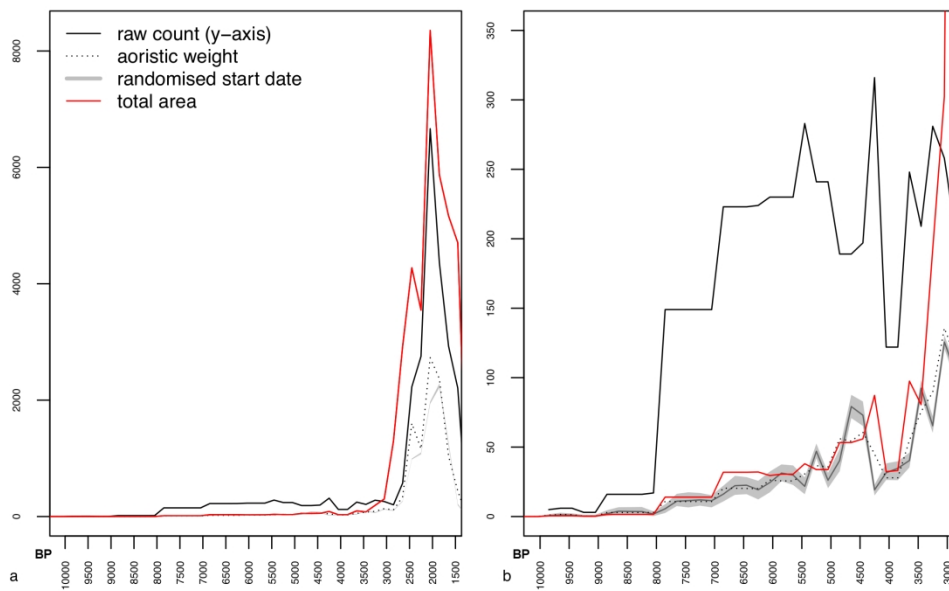


Fig. 3. a) Comparison of raw site count (solid line), summed settlement areas (red line), aoristic sum (dashed line), and randomised site start dates (grey envelope) from 10 to 1.5. ka BP; b) Inset of population change between 10 and 2.8 ka BP.

203x127mm (300 x 300 DPI)

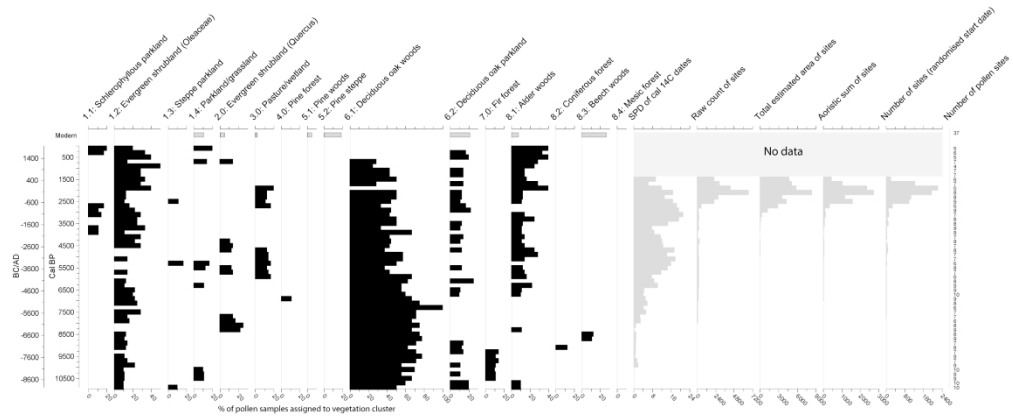


Fig. 4 Pollen-inferred vegetation cluster groups (11,000 BP – modern) for Tyrrhenian central Italy compared with proxy archaeological data.

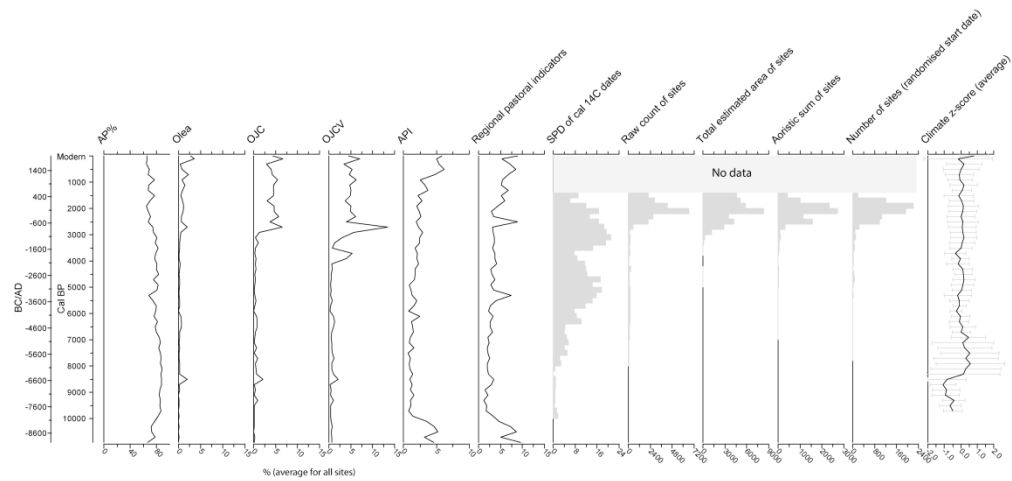


Fig. 5 Pollen indicator groups: arboreal pollen (%AP), sum of *Olea*, *Juglans*, *Castanea* and *Vitis* (O/OJC/OJCV), anthropogenic pollen index (API), and pastoral indicators averaged for all sites in the study area (11,000 BP to modern) compared with proxy archaeological data. Regional average z-scores are presented for 14 palaeoclimate records from across Italy (for further information about the palaeoclimate datasets see Finné et al., this volume).



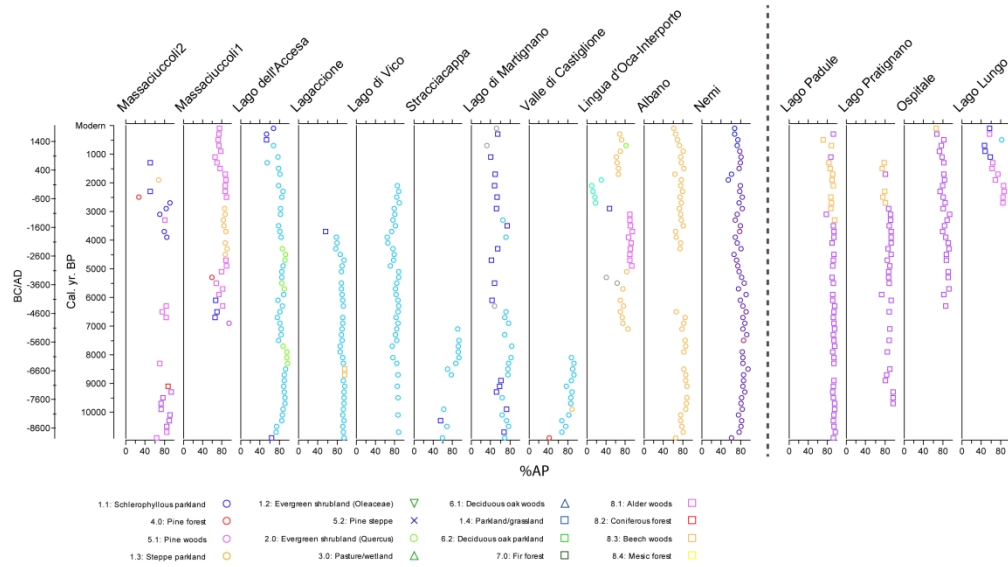
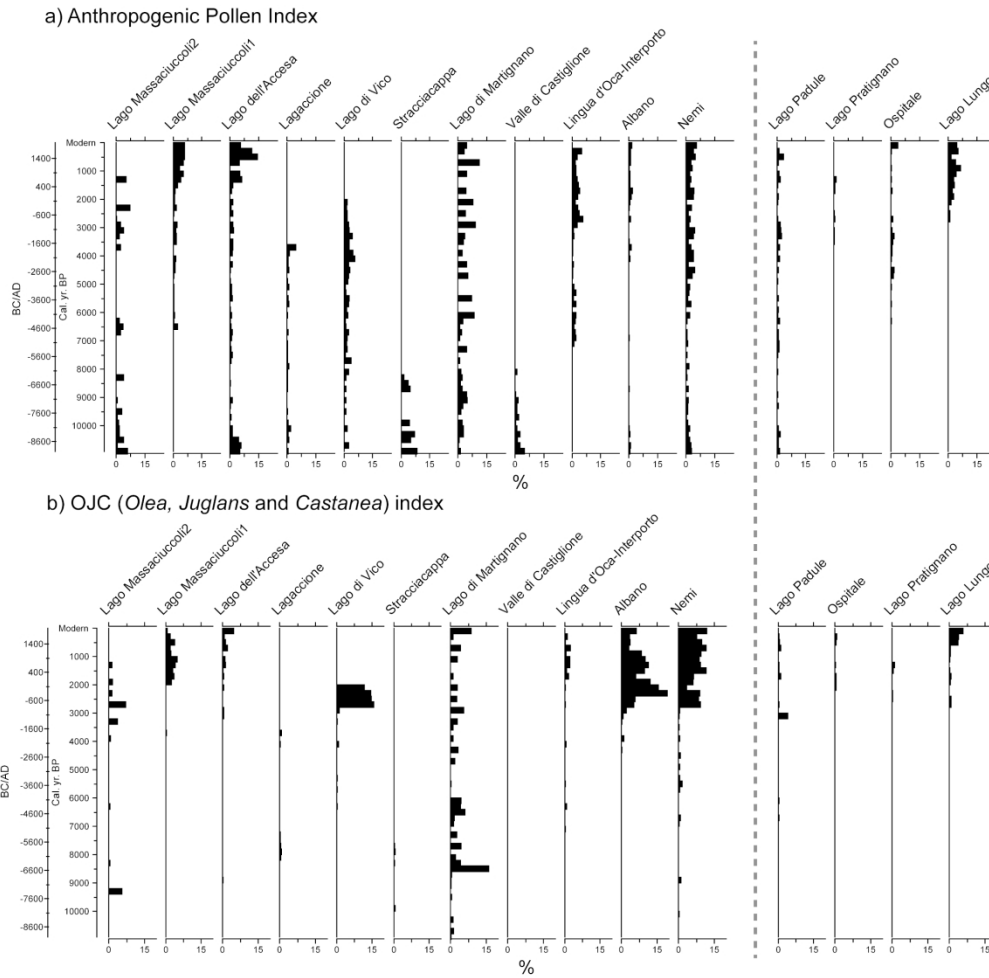


Fig. 6 Arboreal Pollen % (AP%) plotted in the x-axis for each pollen site plotted with cluster analysis derived vegetation cluster (symbols) (11000 BP – present) for sites in the case study region and 4 additional sites from dissimilar landscapes (Lago Lungo, Ospitale, Lago Padule and Lago Pratignano) excluded from the regional synthesis.



excluded from the regional synthesis.

Fig. 7 a) Anthropogenic Pollen Index (API) and b) OJC (Olea, Castanea and Juglans) index plotted for individual pollen sites (11000 BP – present) for sites in the case study region and 4 additional sites from dissimilar landscapes (Lago Lungo, Ospitale, Lago Padule and Lago Pratignano) excluded from the regional synthesis.

Period	Absolute dates	
Mesolithic	10,000/9,500 – 6000/5800 BC   11950/11450 – 7950/7750 BP	
Early Neolithic	6000/5800 – 4500 BC   7950/7750 – 6450 BP	
Middle Neolithic	4500 -3500 BC   6450 – 5450 BP	
Late Neolithic	3500 – 3000 BC   5450 – 4950 BP	
Chalcolithic	3000 – 2300   4950 – 4250 BP	
Early Bronze Age	2300 – 1700 BC   4250 – 3650 BP	
Middle Bronze Age	1700 – 1325/1300 BC   3650 – 3275/3250 BP	
Recent Bronze Age	1325/1300 – 1175/1150 BC   3275/3250 – 3125/3100 BP	Late Bronze Age
Final Bronze Age	1175/1150 – 1020/950 BC   3125/3100 – 2970/2900 BP	
Early Iron Age	1020/950 – 750/725 BC   2970/2900 – 2700/2675 BP	
Late Iron Age	750/725 – 580 BC   2700/2675 – 2530 BP	
Archaic Period	580 – 480 BC   2530 – 2430 BP	
Post-Archaic Period	480 – 350 BC   2430 – 2300 BP	
Republican Period	350 – 30 BC   2300 – 1980 BP	
Early Imperial Period	30 BC – 100 AD   1980 – 1850 BP	
Mid-Imperial Period	100 – 300 AD   1850 – 1650 BP	
Late Imperial Period	300 – 500 AD   1650 BP – 1450 BP	

**Table 1.** A chronological scheme for central Italy (after Guidi and Piperno 1993, Plate VI and X; Malone 2003, Table I; Attema et al. 2010, Table 2.1; Rajala 2013, Table 1; Fulminante 2014, Table 7; Alessandri 2016, Fig.2).

Code	Site name	Latitude	Longitude	Elevation	Contributor	Site type	Citation
ACCESA	Accesa	42.98667	10.89167	160	Colombaroli	lake	Colombaroli D et al. (2008) Fire vegetation interactions during the Mesolithic Neolithic transition at Lago dell'Accesa, Tuscany, Italy. <i>The Holocene</i> : 18, 679-692.
MASSAC2	Massaciuccoli	43.81	10.22	0	Colombaroli	lake	Colombaroli D (2007) Long-term interactions between Mediterranean climate, vegetation and fire regime at Lago di Massaciuccoli (Tuscany, Italy). <i>Journal of Ecology</i> : 95, 755-770
CASTIG	Valle di Castiglione	41.89167	12.75972	44	Di Rita	ancient lake	Di Rita F et al. (2013) A Lateglacial and early Holocene pollen record from Valle di Castiglione (Rome): Vegetation dynamics and climate implications. <i>Quaternary International</i> : 288, 73-80.
DOCA	Lingua d'Oca-Interporto	41.825	12.282	0	Di Rita	coastal	Di Rita F et al. (2010) Holocene environmental instability in the wetland north of the Tiber delta (Rome, Italy): sea-lake-man interactions. <i>Journal of Paleolimnology</i> : 44, 51-67.
AC4HOLO	Lago dell'Accesa	42.98667	10.89167	160	EPD	lake	Drescher-Schneider RE et al. (2007) Vegetation history, climate and human impact over the last 15,000 years at Lago dell'Accesa (Tuscany, Central Italy). <i>Vegetation History and Archaeobotany</i> : 16, 279-299.
AC4LATE	Lago dell'Accesa	42.98667	10.89167	160	EPD	lake	Drescher-Schneider RE (2007) Vegetation history, climate and human impact over the last 15,000 years at Lago dell'Accesa (Tuscany, Central Italy). <i>Vegetation History and Archaeobotany</i> , 16:279-299.
MARTIGAN	Lago di Martignano	42.11667	12.33333	204	EPD	maar lake	Kelly MG et al. (1991) An 11000 year record of vegetation and environment from Lago di Mortignara, Latium, Italy. <i>Journal of Quaternary Science</i> : 6, 209-224.
STRACC	Stracciacappa	42.13	12.32194	220	Giardini	drained crater lake	Giardini M (2007) Late Quaternary vegetation history at Stracciacappa (Rome, central Italy). <i>Vegetation History and Archaeobotany</i> : 16, 301-316.
LAGACC	Lagaccione	42.56667	11.8	355	Magri	lake	Magri D (1999) Late Quaternary vegetation history at Lagaccione near Lago di Bolsena (central Italy). <i>Review of Palaeobotany and Palynology</i> : 106, 171-208.
MASSAC	Lago	43.83	10.33	0	Mariotti	lake	Menozzi BI et al. (2003) Lineamenti paleoambientali del bacino del Lago di

	Massaciuccoli						Massaciuccoli (Toscana Nord-occidentale, Italia). <i>Atti Soc Tosc Sci Nat, Serie B</i> : 109, 177-187.
ALBANO	Albano	41.756	12.667	0	Mercuri	lake	Mercuri AM et al. (2002) The long history of Cannabis and its cultivation by the Romans in central Italy, shown by pollen records from Lago Albano and Lago di Nemi. <i>Vegetation History and Archaeobotany</i> : 11, 263-276.
NEMI	Nemi	41.718	12.702	0	Mercuri	lake	Mercuri AM et al. (2002) The long history of Cannabis and its cultivation by the Romans in central Italy, shown by pollen records from Lago Albano and Lago di Nemi. <i>Vegetation History and Archaeobotany</i> : 11, 263-276.
VICO	Lago di Vico	42.31667	12.16667	510	Sadori	lake	Magri D & Sadori L (1999) Late Pleistocene and Holocene pollen stratigraphy at Lago di Vico, central Italy. <i>Vegetation History and Archaeobotany</i> : 8, 247-260.
LUN	Lago Lungo	42.47	12.83	369	Mensing	lake	Mensing SA et al. (2015) 2700 years of Mediterranean environmental change in central Italy: a synthesis of sedimentary and cultural records to interpret past impacts of climate on society. <i>Quaternary Science Reviews</i> : 116, 72-94.
PADULE	Lago Padule	44.29861	10.21472	1187	EPD	lake	Watson CS (1996) The vegetational history of the northern Apennines, Italy: information from three new sequences and a review of Regional vegetational change. <i>Journal of Biogeography</i> : 23, 805-841.
PRGNP	Lago Pratignano	44.17611	10.81972	1307	EPD	Bog with central open water	Watson CS (1996). The vegetational history of the northern Apennines, Italy: information from three new sequences and a review of Regional vegetational change. <i>Journal of Biogeography</i> : 23, 805-841.
OSPITALE	Ospitale	44.15556	10.78	1225	EPD	circular bog	Watson CS (1996). The vegetational history of the northern Apennines, Italy: information from three new sequences and a review of Regional vegetational change. <i>Journal of Biogeography</i> : 23, 805-841.

1  
2  
3  
4  
5  
6  
7  
8  
9  
10

	AP sum	<i>Olea</i>	OJC	OJCV	API	Regional Pastoral	<sup>14</sup> C SPD	count	area	Aoristic weight	random
AP sum	1										
<i>Olea</i>	<b>-0.48</b>	1									
OJC	<b>-0.47</b>	<b>0.83</b>	1								
OJCV	<b>-0.48</b>	<b>0.73</b>	<b>0.86</b>	1							
API	<b>-0.72</b>	<b>0.52</b>	<b>0.57</b>	<b>0.62</b>	1						
Regional Pastoral	<b>-0.72</b>	<b>0.39</b>	<b>0.37</b>	<b>0.45</b>	<b>0.68</b>	1					
<sup>14</sup> C SPD	<b>-0.71</b>	0.22	0.27	<b>0.35</b>	<b>0.58</b>	<b>0.63</b>	1				
count	<b>-0.8</b>	<b>0.55</b>	<b>0.48</b>	<b>0.55</b>	<b>0.59</b>	<b>0.6</b>	<b>0.73</b>	1			
area	<b>-0.8</b>	<b>0.57</b>	<b>0.53</b>	<b>0.62</b>	<b>0.71</b>	<b>0.7</b>	<b>0.83</b>	<b>0.89</b>	1		
aorist	<b>-0.81</b>	<b>0.54</b>	<b>0.51</b>	<b>0.58</b>	<b>0.7</b>	<b>0.7</b>	<b>0.85</b>	<b>0.88</b>	<b>0.99</b>	1	
random	<b>-0.82</b>	<b>0.53</b>	<b>0.49</b>	<b>0.57</b>	<b>0.7</b>	<b>0.73</b>	<b>0.83</b>	<b>0.84</b>	<b>0.95</b>	<b>0.97</b>	

32  
33  
34  
35  
36  
37  
38  
39  
40  
41  
42  
43  
44  
45  
46  
47  
48  
49  
50  
51  
52  
53  
54  
55  
56  
57  
58  
59  
60

**Table 3.** Spearman's Rank Correlation Coefficient (R-values) value matrix for the period 10000-1400 cal BP. In bold values significant correlations (p-value <0.05).

# Supplemental material 1

## Radiocarbon dates

Radiocarbon dates from archaeological sites were compiled from existing online databases and electronic and print. A total of 697 uncalibrated radiocarbon dates from 170 sites have been collected. Below the sources from which the radiocarbon dates have been collected.

### Databases/Datasets

BANADORA. Banque Nationale de Données Radiocarbone pour l'Europe et le Proche Orient, Centre de Datation par le Radiocarbone, CNRS Lyon:

<http://www.arar.mom.fr/banadora/>

CalPal - The Cologne Radiocarbon Calibration & Palaeoclimate Research Package. Developed by Weninger, B., Jöris, O., and Danzeglocke, U: <http://monrepos-rgzm.de/forschung/ausstattung.html#calpal>

EUROEVOL. Manning, K; Timpson, A; Colledge, S; Crema, E; Shennan, S; (2015) The Cultural Evolution of Neolithic Europe. EUROEVOL Dataset:

<http://discovery.ucl.ac.uk/1469811/>

IRPA/KIK. Royal Institute for Cultural Heritage web based Radiocarbon database. Van Strydonck, M. and De Roock, E., 2011. Royal Institute for Cultural Heritage web-based radiocarbon database. *Radiocarbon*, 53(2), pp.367-370.

<http://c14.kikirpa.be/>

ORAU. Oxford Radiocarbon Accelerator Unit online database:

<https://c14.arch.ox.ac.uk/databases.html>

RADON. Martin Hinz, Martin Furholt, Johannes Müller, Dirk Raetzl-Fabian, Christoph Rinne, Karl-Göran Sjögren, Hans-Peter Wotzka, RADON - Radiocarbon dates online 2012. Central European database of <sup>14</sup>C dates for the Neolithic and Early Bronze Age. www.jungsteinsite.de, 2012, 1-4: <http://radon.ufg.uni-kiel.de/>

### References

Alessio, M., Bella, F. and Cortesi, C., 1964. University of Rome carbon-14 dates II. *Radiocarbon*, 6, pp.77-90.

Alessio, M., Bella, F., Bachechi, F. and Cortesi, C., 1965. University of Rome carbon-14 dates III. *Radiocarbon*, 7, pp.213-222.

Alessio, M., Bella, F., Bachechi, F. and Cortesi, C., 1967. University of Rome carbon-14 dates V. *Radiocarbon*, 9, pp.346-367.

- 1  
2  
3 Alessio, M., Bella, F., Improta, S., Belluomini, G., Cortesi, C. and Turi, B., 1970.  
4 University of Rome carbon-14 dates VIII. *Radiocarbon*, 12(2), pp. 599-616.  
5  
6 Alessio, M., Bella, F., Improta, S., Belluomini, G., Calderoni, G., Cortesi, C. and Turi,  
7 B., 1974. University of Rome carbon-14 dates XII. *Radiocarbon*, 16(3), pp.358-367.  
8  
9 Alessio, M., Bella, F., Improta, S., Belluomini, G., Calderoni, G., Cortesi, C., Manelli,  
10 G.L. and Vigilante, A., 1975. University of Rome carbon-14 dates XIII. *Radiocarbon*,  
11 17(3), pp.313-327.  
12  
13 Alessio, M., Bella, F., Improta, S., Belluomini, G., Calderoni, G., Cortesi, C. and  
14 Turi, B., 1976. University of Rome carbon-14 dates XIV. *Radiocarbon*, 18(3),  
15 pp.321-349.  
16  
17 Alessio, M., Allegri, L., Bella, F., Improta, S., Belluomini, G., Calderoni, C., Cortesi,  
18 C., Manfra, L., Petrone, V. and Fruscalzo, A., 1978. University of Rome carbon-14  
19 dates XV. *Radiocarbon*, 20(1), pp.68-78.  
20  
21 Ambers, J. and Bowman, S., 1998. Radiocarbon measurements from the British  
22 Museum: datelist XXIV. *Archaeometry*, 40(2), pp.413-435.  
23  
24 Ambers, J. and Bowman, S., 1999. Radiocarbon measurements from the British  
25 Museum: datelist XXV. *Archaeometry*, 41(1), pp.185-195.  
26  
27 Ambers, J., Matthews, K.J. and Bowman, S., 1989. British Museum natural  
28 radiocarbon measurements XXI. *Radiocarbon*, 31(1), pp.15-32.  
29  
30 Anzidei, A.P., Carboni, G., Castagna, M.A., Celant, A., Cianca, M., Egidi, R.,  
31 Favorito, S., Funicello, R., Giordano, G., Malvone, M. and Tagliacozzo, A., 2007.  
32 L'abitato eneolitico di Osteria del Curato-via Cinquefrondi: nuovi dati sulle facies  
33 archeologiche di Laterza e Ortucchio nel territorio di Roma. *Atti della XL Riunione  
34 Scientifica dell' Instituto Italiano di Preistoria e Protostoria. Strategie di insediamento  
35 fra Lazio e Campania in età preistorica e protostorica*, pp.477-508.  
36  
37 Anzidei, A.P., Carboni, G., Carboni, L., Castagna, M.A. and Catalano, P., 2011. Il  
38 gruppo Roma-Colli Albani della facies di Rinaldone: organizzazione spaziale, rituali e  
39 cultura materiale nelle necropoli di Lucrezia Romana e Romanina, Roma. *Atti della  
40 XLIII Riunione scientifica*, pp.297-307.  
41  
42 Azzi, C.M., Bigliocca, L. and Piovan, E., 1973. Florence radiocarbon dates I.  
43 *Radiocarbon*, 15(3), pp.479-487.  
44  
45 Azzi, C.M., Bigliocca, L. and Piovan, E., 1974. Florence radiocarbon dates II.  
46 *Radiocarbon*, 16(1), pp.10-14.  
47  
48 Babbi, A., Peltz, U. and Benelli, E., 2016. *La tomba del guerriero di Tarquinia:  
49 identità elitaria, concentrazione del potere e networks dinamici nell'avanzato VIII sec.  
50 aC.* Verlag des Römisch-Germanischen Zentralmuseums;[Schnell+ Steiner.  
51  
52 Brock, A.L. and Terrenato, N., 2016. Rome in the Bronze Age: late second-  
53 millennium BC radiocarbon dates from the Forum Boarium. *Antiquity*, 90(351),  
54 pp.654-664.  
55  
56  
57  
58  
59  
60



1  
2  
3  
4 Bronk Ramsey, C., Higham, T.F.G., Brock, F., Baker, D., Ditchfield, P. and Staff,  
5 R.A., 2015. Radiocarbon dates from the Oxford AMS System: archaeometry Datelist  
6 35. *Archaeometry*, 57(1), pp.177-216.

7  
8 Calabrisotto, C.S., Fedi, M.E., Taccetti, F., Benvenuti, M., Chiarantini, L. and  
9 Quaglia, L., 2009. Radiocarbon Reveals the Age of Two Precious Tombs in the  
10 Etruscan Site of Populonia-Baratti (Tuscany). *Radiocarbon*, 51(3), pp.915-922.

11  
12 Capuzzo, G., Boaretto, E. and Barceló, J.A., 2014. EUBAR: A Database of 14 C  
13 Measurements for the European Bronze Age. A Bayesian Analysis of 14 C-Dated  
14 Archaeological Contexts from Northern Italy and Southern France. *Radiocarbon*,  
15 56(2), pp.851-869.

16  
17  
18 Catachhio, Nuccia Negroni, Aspesi, Matteo, 2013. La cronologia di Rinaldone: lo  
19 stato della questione e le nuove datazioni. Preshitroia E Protostoria: Chronologia  
20 Assoluta e Relativa Della'eta Del Rame in Italia. Universita de Verona. Qui Edit,  
21 Verona.

22  
23 Conti, Anna Maria; Persiani, Carlo; Pettini, Patrizia. 1997. I Riti Della Morte Nella  
24 Necropoli Eneolitica Della Selvicciola (Ischia de Castro-Viterbo). Origini: Preistoria  
25 e Protostoria Delle Civiltà Antiche. Bonsignori Editore.

26  
27  
28 Dauchot, D.M. and Van, S.M., 1981. Institut Royal du Patrimoine Artistique  
29 radiocarbon dates XII. *Radiocarbon*, 29(2), pp.197-208.

30  
31 Dauchot-Dehon, M., Van Strydonck, M. and Heylen, J., 1981. Institut Royal du  
32 Patrimoine Artistique radiocarbon dates VIII. *Radiocarbon*, 23(3), pp.345-351.

33  
34 De Marinis, R., 2001. Aspetti della Metallurgia dell'Antica Eta' del Bronzo in  
35 Toscana. Atti della XXXIV Riunione Scientifica . Preistoria e Protostoria della  
36 Toscana. Firenze: Istituto Italiano di Preistoria e Protostoria, 253-281.

37  
38 Fedi, M.E., Arnoldus-Huyzendveld, A., Cartocci, A., Manetti, M. and Taccetti, F.,  
39 2007. Radiocarbon dating in late-Roman and medieval contexts: an archaeological  
40 excavation in the Center of Florence, Italy. *Radiocarbon*, 49(2), pp.611-616.

41  
42 Fentress, E., Judson, S., Blagg, T., de Vos, M. and Arthur, P., 1983. Excavations at  
43 Fosso della Crescenza, 1962. *Papers of the British School at Rome*, 51, pp.58-101.

44  
45 Fentress, E. and Bodel, J.P., 2003. *Cosa 5* (Vol. 2). University of Michigan Press.

46  
47 Fenwick, C., 2016. The Brick Building' in E. Fentress, C. Goodson, M. Maiuro (eds.)  
48 *An Imperial Estate and its Legacies: Villamagna, near Anagni*. British School of  
49 Rome Monograph Series: 184-7.

50  
51 Ferrara, G., Reinharz, M. and Tongiorgi, E., 1959. Carbon-14 dating in Pisa.  
52 *Radiocarbon*, 1, pp.103-110.

53  
54 Ferrara, G., Fornaca-Rinaldi, G. and Tongiorgi, E., 1961. Carbon-14 dating in Pisa—  
55 II. *Radiocarbon*, 3, pp.99-104.

56  
57 Goiran, J.P., Salomon, F., Mazzini, I., Bravard, J.P., Pleuger, E., Vittori, C., Boetto,  
58 G., Christiansen, J., Arnaud, P., Pellegrino, A. and Pepe, C., 2014. Geoarchaeology  
59  
60

1  
2  
3 confirms location of the ancient harbour basin of Ostia (Italy). *Journal of*  
4 *Archaeological Science*, 41, pp.389-398.

5  
6 Goiran, J.P., Salomon, F., Bukowiecki, E. and Boetto, G., 2012. Portus. Relations  
7 entre des carottages dans les bassins et sur les structures portuaires (Secteur des  
8 Grandi Magazzini, de la Darsena et du chenal d'accès). *Chronique des activités*  
9 *archéologiques de l'École française de Rome*.

10  
11  
12 Jean-Philippe Goiran, Ferréol Salomon, Hervé Tronchère, Hatem Djerbi, Pierre  
13 Carbonel, Carole Ognard et Christine Oberlin, « Géoarchéologie des ports de Claude  
14 et de Trajan, Portus, delta du Tibre », *Mélanges de l'École française de Rome -*  
15 *Antiquité* [En ligne], 123-1 | 2011, mis en ligne le 20 février 2013, consulté le 14 juin  
16 2018. URL : <http://journals.openedition.org/mefra/491> ; DOI : 10.4000/mefra.491

17  
18  
19 Cremonesi, R.G., 2001. Le Néolithique ancien de Toscane et de l'Archipel toscan.  
20 *Bulletin de la Société préhistorique française*, pp.423-430.

21  
22 Hadler, H., Vött, A., Fischer, P., Ludwig, S., Heinzelmann, M. and Rohn, C., 2015.  
23 Temple-complex post-dates tsunami deposits found in the ancient harbour basin of  
24 Ostia (Rome, Italy). *Journal of Archaeological Science*, 61, pp.78-89.

25  
26 Huiyzenveld, A. A., Turi, A., and Morelli, C., 2015. Il paleoambiente di Monte  
27 Giulio e della parte nord-orientale del bacino portuale di Claudio. Fasti Online.  
28 <http://www.fastionline.org/docs/FOLDER-it-2015-324.pdf>

29  
30 Lawn, B., 1974. University of Pennsylvania radiocarbon dates XVII. *Radiocarbon*,  
31 16(2), pp.219-237.

32  
33 Lawn, B., 1975. University of Pennsylvania radiocarbon dates XVIII. *Radiocarbon*,  
34 17(2), pp.196-215.

35  
36 Maffi, M. and Tirabassi, I., 2013. Il sito Neolitico di S. Ilario d'Enza (Reggio Emilia):  
37 scavi Monaco-Bernardi. *Rivista di scienze preistoriche*, 63(63), pp.39-76.

38  
39 Manfredini, A., Fugazzola Delpino, M.A., Sarti, L., Silvestrini, M. and Martini, F.,  
40 2009. Adriatico e Tirreno a confronto: analisi dell'occupazione territoriale tra il  
41 Neolitico finale e l'età del Rame in alcune aree campione dell'Italia centrale. *Rivista di*  
42 *scienze preistoriche*, 59(59), pp.115-179.

43  
44 Manfredini, A., 2012. La cronologia dell'Eneolitico del Tirreno centrale alla luce delle  
45 recenti datazioni radiometriche. In: N. Negroni Catacchio (ed.), *Preistoria e*  
46 *Protostoria in Etruria. L'Etruria dal Paleolitico al Primo Ferro. Atti del Decimo*  
47 *Incontro di Studi*. Milano: Centro di Studi di Preistoria e Protostoria e Archeologia,  
48 275-281.

49  
50 Negroni Catacchio, N., Pacciani, E., Albertini, E., Aspesi, M. and Moggi-Cecchi, J.,  
51 2014. Nuovi dati su alcune necropoli rinaldoniane: revisione di vecchi scavi, nuove  
52 datazioni e recenti analisi dei resti scheletrici. *Rivista di scienze preistoriche*, 64(64),  
53 pp.83-113.

54  
55 Nijboer, A.J., van der Plicht, J.O., Sestieri, A.B. and de Santis, A.N.N.A., 2015. A  
56 high chronology for the early Iron Age in central Italy. *Palaeohistoria*, pp.165-176.

1  
2  
3 Olsson, I.U. and Kilicci, S., 1964. Uppsala natural radiocarbon measurements IV.  
4 *Radiocarbon*, 6, pp.291-307.

5  
6 Ferréol Salomon, Jean-Philippe Goiran, Elisa Pleuger, Ilaria Mazzini, Antonia  
7 Arnoldus-Huyzendveld, Alessandra Ghelli, Giulia Boetto et Paola Germoni, « Ostie et  
8 l'embouchure du Tibre », *Chronique des activités archéologiques de l'École*  
9 *française de Rome* [En ligne], Italie centrale, mis en ligne le 28 janvier 2014, consulté  
10 le 14 juin 2018. URL : <http://journals.openedition.org/cefr/1062> ; DOI :  
11 10.4000/cefr.1062  
12

13  
14 Pearce, M.J., 2013. *Rethinking the north Italian early Neolithic*. Accordia Research  
15 Institute, University of London.

16  
17 Pinhasi, R., Fort, J. and Ammerman, A.J., 2005. Tracing the origin and spread of  
18 agriculture in Europe. *PLoS biology*, 3(12), p.e410.

19  
20 Ringbom, Å., Hale, J., Heinemeier, J., Lindroos, A., Brock, F. and Dunkeld, M.,  
21 2006. The use of mortar dating in archaeological studies of Classical and Medieval  
22 structures. In *Proceedings of the Second International Congress on Construction*  
23 *History* (Vol. 3, pp. 2613-33).  
24

25  
26 Rolfo, M.F., Achino, K.F., Fusco, I., Salari, L. and Silvestri, L., 2016. Reassessing  
27 human occupation patterns in the inner central Apennines in prehistory: The case-  
28 study of Grotta Mora Cavorso. *Journal of Archaeological Science: Reports*, 7,  
29 pp.358-367.  
30

31  
32 Rutgers, L.V., van der Borg, K., de Jong, A.F., van der Linde, C. and Prins, J., 2007.  
33 Further radiocarbon dates from the catacombs of St. Callixtus in Rome. *Radiocarbon*,  
34 49(3), pp.1221-1229.  
35

36  
37 Sadori, L., Giardini, M., Giraudi, C. and Mazzini, I., 2010. The plant landscape of the  
38 imperial harbour of Rome. *Journal of Archaeological Science*, 37(12), pp.3294-3305.

39  
40 Salomon, F., Delile, H., Goiran, J.P., Bravard, J.P. and Keay, S., 2012. The Canale di  
41 Comunicazione Traverso in Portus: the Roman sea harbour under river influence  
42 (Tiber delta, Italy). *Géomorphologie: relief, processus, environnement*, 18(1), pp.75-  
43 90.  
44

45  
46 Schiappelli, A., 2008. *Sviluppo Storico della Tiberina nell'Eta' del Bronzo e nella*  
47 *prima eta' del Ferro*. Firenze: All'Insegna del Giglio, 210.

48  
49 Shennan, S. and Steele, J., 2000. Spatial and chronological patterns in the  
50 neolithisation of Europe.

51 [http://archaeologydataservice.ac.uk/archives/view/c14\\_meso/downloads.cfm](http://archaeologydataservice.ac.uk/archives/view/c14_meso/downloads.cfm)

52  
53 Skeates, R., 1994. A radiocarbon date-list for prehistoric Italy (c. 46 400 BP–2450  
54 BP/400 cal. BC). *Radiocarbon dating and italian prehistory*, 3, pp.147-288.

55  
56 Skeates, R., 1996. Towards an absolute chronology for the Copper Age in central  
57 Italy: a note based on the Conelle site and culture. *Papers of the British School at*  
58 *Rome*, 64, pp.273-282.  
59  
60

- 1  
2  
3 Skeates, R., 2001. New radiocarbon dates for prehistoric Italy and Malta. *Accordia*  
4 *Research Papers*, 8, pp.165-186.  
5  
6 Skeates, R., 2003. New radiocarbon dates for prehistoric Italy: supplementary list 5.  
7 *Accordia research papers.*, 9, pp.163-182.  
8  
9 Skeates, R. and Whitehouse, R., 1996. New radiocarbon dates for prehistoric Italy 1.  
10 *The Accordia Research Papers*, 5(1993-94), pp.137-150.  
11  
12 Skeates, R., and Whitehouse, R., 1996-7. New radio carbon dates for prehistoric Italy  
13 2. *The Accordia Research Papers* 6: 179-91  
14  
15 Skeates, R., and Whitehouse, R., 1997-8. New radio carbon dates for prehistoric Italy  
16 3. *The Accordia Research Papers* 7: 149-62.  
17  
18 Trautman, M.A. and Willis, E.H., 1966. Isotopes, Inc. radiocarbon measurements V.  
19 *Radiocarbon*, 8, pp.161-203.  
20  
21 Van Der Plicht, J., Bruins, H.J. and Nijboer, A.J., 2009. The Iron Age around the  
22 Mediterranean: a High Chronology perspective from the Groningen radiocarbon  
23 database. *Radiocarbon*, 51(1), pp.213-242.  
24  
25 van Rossenberg, E.A. and Rossenberg, E.A.V.E., 2012. *Cultural landscapes, social*  
26 *networks and historical trajectories: A data-rich synthesis of Early Bronze Age*  
27 *networks (c. 2200-1700 BC) in Abruzzo and Lazio (Central Italy)* (Doctoral  
28 dissertation, Faculty of Archaeology, Leiden University).  
29  
30 Visentini, P. 2006. Aspetti cronologici e culturali della fine del Neolitico nell'Italia  
31 nord-orientale. In: Pessina, A., and Visentini, P. (eds.), *Preistoria dell' Italia*  
32 *settentrionale. Studi in ricordo di Bernardino Bagolini Atti del Convegno*, Udine:  
33 Comune di Udine, Edizioni del Museo friulano di storia naturale, pp. 225-242.  
34  
35  
36  
37  
38  
39  
40  
41  
42  
43  
44  
45  
46  
47  
48  
49  
50  
51  
52  
53  
54  
55

## Archaeological Settlement Data

1  
2  
3 Archaeological settlement data sites were compiled from existing published  
4 archaeological survey reports. A total of 7,074 archaeological sites and 10,758  
5 occupation phases have been collected. Below the sources from which the  
6 archaeological sites have been collected.  
7  
8  
9

## 10 11 **References**

12  
13  
14  
15 Acconcia, V., 2012. *Paesaggi etruschi in terra di Siena*. Oxford: Archeopress (BAR  
16 International Series, 2422)

17  
18 Alessandri, L., 2007. *L'occupazione costiera protostorica nel Lazio*  
19 *centromeridionale*. Oxford: Archaeopress (BAR International Series, 1592)

20  
21 Alessandri, L., 2013. *Latium Vetus in the Bronze Age and Early Iron Age*. Oxford:  
22 Archaeopress (BAR International Series, 2565).

23  
24 Andreussi, M., 1977. *Vicus Matrini. Forma Italiae, Regio VII -4*. Roma: De Luca.

25  
26 Anzidei, A. P. et al., 2007. *L'abitato eneolitico di Osteria del Curato-via Cinquefrondi:*  
27 *nuovi dati sulle facies archeologiche di Laterza e Ortucchio nel territorio di Roma*. In:  
28 *Atti XL Riunione scientifica IIPP*. Firenze: Istituto Italiano di Preistoria e Protostoria,  
29 477–508.

30  
31  
32 Attema, P., 1993. *An archaeological survey in the Pontine Region?: a contribution to*  
33 *the early settlement of South Lazio*. Unpublished PhD thesis. University of  
34 Groningen.

35  
36 Attema, P. A. J., De Haas, T. C. A. and La Rosa, M., 2005. *Sites of the Fogliano*  
37 *survey (Pontine Region, central Italy), site classification and a comment on the*  
38 *diagnostic artefacts from Prehistory to the Roman period*, *Palaeohistoria* 45/46, 121–  
39 196.

40  
41  
42 Attema, P. A. J. et al., 2007. *The Astura and Nettuno surveys of the Pontine Region*  
43 *Project (2003-2005, 1st report)*. *Palaeohistoria*, 49/50, 415–516.

44  
45 Attema, P. A. J., De Haas, T. C. A. and Tol, G. W., 2009–2010. *The Astura and*  
46 *Nettuno surveys of the Pontine region project (2003 – 2005), 2nd and final report*.  
47 *Palaeohistoria*, 51/52, 169–327.

48  
49 Attema, P. A. J., Burgers, G. J. and van Leusen, P. M., 2010. *Regional pathways to*  
50 *complexity?: settlement and land-use dynamics in early Italy from the Bronze Age to*  
51 *the Republican period*. Amsterdam: Amsterdam University Press.

52  
53 Attema, P. A. J., De Haas, T. C. A. and Tol, G. W. 2014. *Villas and farmsteads in the*  
54 *Ager Setinus (Sezze, Italy)*. *Palaeohistoria* 55/56, 177–244.

55  
56  
57 Barbaro, B., 2010. *Insedimenti, aree funerarie ed entita' territoriali in Etruria*  
58 *meridionale nel Bronzo Finale*. Firenze: All'Insegna del Giglio.

- 1  
2  
3 Bietti Sestrieri, A. M., 1984. Preistoria e Protostoria nel territorio di Roma. Roma: De  
4 Luca.  
5  
6 Borghi, R., 2002. Chiusi. Roma: 'L'Erma' di Bretschneider.  
7  
8 Botarelli, L., 2004. Radicofani. Carta Archeologica della Provincia di Siena, VII.  
9 Siena: Nuova Immagine Editrice.  
10  
11 Brandizzi Vittucci, P., 1968. Cora. Forma Italiae, 5. Roma: De Luca Editore.  
12  
13 Cambi, F., 1996. Carta Archeologica della Provincia di Siena II. Il Monte Amiata  
14 (Abbadia San Salvatore). Siena: Nuova Immagine Editrice.  
15  
16 Campana, S., 2001. Murlo. Carta Archeologica della Provincia di Siena, 5. Siena:  
17 Nuova Immagine Editrice.  
18  
19 Campana, S., 2013. Montalcino. Carta Archeologica della Provincia di Siena, XII.  
20 Siena: Nuova Immagine Editrice.  
21  
22 Carandini, A., Cambi, F., Celuzza, M., and Fentress, E., 2002. Paesaggi d'Etruria.  
23 Roma: Edizioni di Storia e Letteratura.  
24  
25 Carboni, G., 2002. Territorio aperto o di frontiera? Nuove prospettive di ricerca per lo  
26 studio della distribuzione spaziale delle facies del Gaudo e di Rinaldone nel Lazio  
27 centro-Meridionale. *Origini* 24, 235–299.  
28  
29 Cascino, R., di Giuseppe, H. and Patterson, H., 2012. Veii. The Historical  
30 Topography of the Ancient City. London: The British School at Rome.  
31  
32 Cenni, F., 2010. Buonconvento. Carta Archeologica della Provincia di Siena, VIII.  
33 Siena: Nuova Immagine Editrice.  
34  
35 Chellini, R., 2012. Carta Archeologica della Provincia di Firenze. Galatina: Congedo.  
36  
37 Chiarucci, P., 1996. La documentazione archeologica pre-protostorica nell'area  
38 albana e le piu' recenti scoperte. In: Pasqualini, A. (editor), *Alba Longa. Mito Storia*  
39 *Archeologia. Atti dell'incontro di studio. Roma - Albano Laziale 27-29 gennaio 1994.*  
40 Roma: Istituto Italiano per la Storia Antica, 1–27.  
41  
42 Corsi, C., 2000. L'insediamento rurale di eta' romana e tardoantica nel territorio tra  
43 Tarquinia e Vulci. II parte. *Journal of Ancient Topography* 10, 205–276.  
44  
45 Cucini, C., 1985. Topografia del territorio delle valli del Pecora e dell'Almo. In:  
46 Francovich, R. (ed.), *Scarlino I. Storia e Territorio.* Firenze: All'Insegna del Giglio,  
47 147.  
48  
49 Curri, C. B., 1978. Vetulonia I. Forma Italiae, Regio VII -5. Firenze: Leo Olschki.  
50  
51 de Haas, T., 2011. Fields, farms and colonists: Intensive field survey and early Roman  
52 colonization in the Pontine region, central Italy. Groningen: University of Groningen.  
53  
54 De Rossi, G. B., 1967. Tellenae. Roma: Consiglio Nazionale delle Ricerche.  
55  
56 De Rossi, G. B., 1970. Apiolae. Forma Italiae, 9. Roma: Consiglio Nazionale delle  
57 Ricerche.  
58  
59  
60

- 1  
2  
3 De Rossi, G. B., 1979. *Bovillae*. Firenze: Leo Olschki.  
4  
5 Di Gennaro, F. et al., 2002. Recent Research on the City and Territory of Nepi (VT).  
6 *Papers of the British School at Rome* 70, 29–77.  
7  
8 Fugazzola Delpino, M.A., Pessina, A., and Tine', V., 2004. *Il Neolitico in Italia*.  
9 Roma: Istituto Italiano di Preistoria e Protostoria.  
10  
11 Enei, F., 2001. *Progetto Ager Caeretanus. Il litorale di Alsium*. Santa Marinella:  
12 Regione Lazio.  
13  
14 Felici, C. 2004. *Pienza. Carta Archeologica della Provincia di Siena, VI*. Siena:  
15 Nuova Immagine Editrice.  
16  
17 Fulminante, F., 2014. *The Urbanisation of Rome and Latium Vetus*. Cambridge:  
18 Cambridge University Press.  
19  
20 Gianfrotta, P. A., 1972. *Castrum Novum. Forma Italiae, Regio VII -3*. Roma: De  
21 Luca.  
22  
23 Giuliani, C. F., 1966. *Tibur II. Forma Italiae, 9*. Roma: De Luca.  
24  
25 Hayes, J. W. and Martini, I. P., 1994. *Archaeological Survey in the Lower Liri*  
26 *Valley, Central Italy*. Oxford: Archaeopress (Bar International, 595).  
27  
28 Hemphill, P., 2000. *Archaeological Investigations in Southern Etruria. The Civitella*  
29 *Cesi Survey*. Motala: Motala Grafiska.  
30  
31 Holstrom, S., Voorrips & H. Kamermans, 2004. *The Agro Pontino archaeological*  
32 *survey*. Leiden: University of Leiden.  
33  
34 Jolivet, V. et al., 2009. *Suburbium II. Il Suburbio di Roma dalla fine dell'eta'*  
35 *monarchica alla nascita del sistema delle ville (V-II secolo a.C.)*. Rome: Ecole  
36 *Francaise de Rome*.  
37  
38 King, N., 1993. *An Archaeological Field Survey Near Campagnano di Roma,*  
39 *Southern Etruria*. *Papers of the British School at Rome* 61, 115–124.  
40  
41 Maffei, A., 2008. *Carta Archeologica 'Arco del Mignone'*.  
42  
43 Mari, Z., 1983. *Tibur III. Forma Italiae, 31*. Firenze: Leo Olschki.  
44  
45 Mari, Z., 1991. *Tibur IV. Forma Italiae Regio I, 35*. Firenze: Leo S. Olschki.  
46  
47 Mazzolani, M., 1969. *Anagnia. Forma Italiae, 6*. Roma: Istituto di Topografia Antica  
48 *dell'Universita' di Roma*.  
49  
50 Morselli, C., 1980. *Sutrium. Forma Italiae, 7*. Firenze: Leo Olschki.  
51  
52 Morselli, C. and Tortorici, E., 1982. *Ardea. Forma Italiae, 16*. Firenze: Leo Olschki.  
53  
54 Muzzioli, M. P., 1970. *Praeneste. Forma Italiae Regio I, 8*. Roma: Consiglio  
55 *Nazionale delle Ricerche*.  
56  
57 Muzzioli, M. P., 1980. *Cures Sabini. Forma Italiae, Regio IV -2*. Firenze: Leo  
58 *Olschki*.  
59  
60

- 1  
2  
3 Nardi, G., 1980. *Le Antichita' di Orte*. Roma: Consiglio Nazionale delle Ricerche.  
4  
5 Nardi, G., 1988. Definizione e perimetrazione del parco. In: Cristofani M. and Nardi,  
6 G. (eds.), *Il Parco Archeologico*. Roma: Consiglio Nazionale delle Ricerche, 65–73.  
7  
8 Neppi-Modena, A. (1953) *Pisae. Forma Italiae, Regio VII -1*. Rome: Unione  
9 Accademica Nazionale.  
10  
11 Pacciarelli, M., 2010. *Dal villaggio alla citta' . La svolta protourbana del 1000 a.C.*  
12 *nell'Italia tirrenica*. Firenze: All'Insegna del Giglio.  
13  
14 Pala, C., 1976. *Nomentum. Forma Italiae, Regio I -12*. Roma: De Luca.  
15  
16 Paolucci, G., 2007. *Chianciano Terme. Carta Archeologica della Provincia di Siena,*  
17 *IX*. Siena: Nuova Immagine Editrice.  
18  
19 Pasquinucci, M. and Menchelli, S., 1999. The Landscape and Economy of the  
20 Territories of Pisae and Volaterrae (Coastal North Etruria). *Journal of Roman*  
21 *Archaeology* 12, 123–141.  
22  
23 Perazzi, P. and Poggesi, G., 2011. *Carta Archeologica della Provincia di Prato*.  
24 Firenze: All'Insegna del Giglio.  
25  
26 Quilici, L., 1974. *Collatia. Forma Italiae Regio I, 10*. Roma: De Luca Editore.  
27  
28 Quilici Gigli, S., 1970. *Tuscania. Forma Italiae, Regio VII -2*. Roma: De Luca.  
29  
30 Quilici Gigli, S., 1976. *Blera. Topografia antica della citta' e territorio*. Mainz: Verlag  
31 *Philipp Von Zabern*.  
32  
33 Quilici, L. and Quilici Gigli, S., 1980. *Crustumerium*. Roma: Consiglio Nazionale  
34 delle Ricerche.  
35  
36 Quilici, L. and Quilici Gigli, S., 1986. *Fidenae. Latium Vetus, 5*. Roma: Consiglio  
37 Nazionale delle Ricerche.  
38  
39 Quilici, L. and Quilici Gigli, S., 1993. *Ficulea. Latium Vetus, 6*. Roma: Consiglio  
40 Nazionale delle Ricerche.  
41  
42 Provincia di Firenze, 1995. *Carta Archeologica della Provincia di Firenze*. Firenze:  
43 *Provincia di Firenze*.  
44  
45 Rajala, U., 2013. The concentration and centralization of late prehistoric settlement in  
46 central Italy: the evidence from the Nepi Survey, *Papers of the British School at*  
47 *Rome* 81, 1–38.  
48  
49 Schiappelli, A., 2008. *Sviluppo storico della tenerina. Nell' eta' del Bronzo e nella*  
50 *prima eta' del Ferro*. Firenze: All'Insegna del Giglio.  
51  
52 Sewell, J. P. and Witcher, R. E., 2015. Urbanism in Ancient Peninsular Italy:  
53 developing a methodology for a database analysis of higher order settlements (350  
54 BCE to 300 CE). *Internet Archaeology* 40.  
55  
56 Tartara, P., 1999. *Torrimpietra. Forma Italiae, 1*. Firenze: Leo S. Olschki.  
57  
58  
59  
60



1  
2  
3 Valenti, M., 1995. Carta Archeologica della Provincia di Siena I. Chianti senese  
4 (Castellina in Chianti, Castelnuovo Berardenga, Gaiole in Chianti, Radda in Chianti).  
5 Siena: Nuova Immagine Editrice.  
6

7 Valenti, M., 1999. Carta Archeologica della Provincia di Siena III. La Valdelsa  
8 (Comuni di Colle Val d'Elsa e Poggibonsi). Siena: Nuova Immagine Editrice .  
9

10 Valenti, M., 2003. Ager Tusculanus. Forma Italiae, 41. Florence: Leo Olschki.  
11

12 van Leusen, M., Tol, G. W. and Anastasia, C., 2010. Archaeological sites recorded by  
13 the GIA Hidden Landscapes survey campaigns in the Monti Lepini (Lazio, Italy),  
14 2005-2009. Palaeohistoria, 51/52, 329–424.  
15

16 van Loon, T., Willemsen, S. L. and Tol, G. W., 2014. Sites and finds of the  
17 Campoverde and Padiglione surveys of the Pontine region project (2005).  
18 Palaeohistoria 55/56, 105–137.  
19

20 Verga, F., 2006. Ager Foronovanus. Firenze: Leo S. Olschki.  
21

22 Zecchini, M., 1999. Lucca Etrusca. Abitati, necropoli, luoghi di culto. Lucca: Edizioni  
23 S. Marco Litotipo.  
24  
25  
26  
27  
28  
29  
30  
31  
32  
33  
34  
35  
36  
37  
38  
39  
40  
41  
42  
43  
44  
45  
46  
47  
48  
49  
50  
51  
52  
53  
54  
55  
56  
57  
58  
59  
60

Time start BP	Time end BP	SPD of radiocarbon dates	Raw count	Total area	Aoristic weight	Randomised duration
10000	8000	-0.21	0.74	0.74	0.76	0.61
9800	7800	-0.01	0.47	0.47	0.51	0.37
9600	7600	-0.01	0.42	0.42	0.43	0.37
9400	7400	-0.16	0.23	0.23	0.21	0.19
9200	7200	-0.37	-0.13	-0.13	-0.13	-0.15
9000	7000	-0.50	-0.48	-0.48	-0.48	-0.43
8800	6800	-0.71	-0.81	-0.81	-0.80	-0.76
8600	6600	-0.62	-0.85	-0.85	-0.83	-0.76
8400	6400	-0.48	-0.86	-0.86	-0.81	-0.77
8200	6200	-0.38	-0.82	-0.82	-0.77	-0.77
8000	6000	-0.35	-0.82	*-0.68	-0.77	-0.77
7800	5800	-0.38	-0.81	-0.54	-0.78	-0.84
7600	5600	-0.14	-0.72	-0.38	-0.73	-0.79
7400	5400	-0.38	-0.74	-0.40	-0.75	-0.72
7200	5200	-0.47	-0.76	-0.46	-0.81	-0.76
7000	5000	-0.19	-0.50	-0.12	-0.53	-0.55
6800	4800	0.01	-0.56	0.18	-0.12	-0.12
6600	4600	-0.16	-0.41	-0.04	-0.19	-0.22
6400	4400	-0.22	-0.55	0.26	0.15	0.01
6200	4200	-0.14	-0.36	0.29	0.33	0.09
6000	4000	-0.16	-0.43	0.20	0.32	0.09
5800	3800	-0.16	-0.28	0.15	0.28	0.05
5600	3600	-0.14	-0.21	0.20	0.41	-0.04
5400	3400	0.02	-0.08	0.21	0.50	0.01
5200	3200	0.05	0.01	-0.05	0.27	0.02
5000	3000	0.10	0.04	0.05	0.38	0.18
4800	2800	-0.09	0.15	-0.16	0.07	0.02
4600	2600	-0.07	-0.27	-0.53	-0.26	-0.15
4400	2400	-0.12	-0.40	-0.65	-0.49	-0.45
4200	2200	-0.03	-0.57	-0.76	-0.66	-0.60
4000	2000	0.02	-0.66	-0.83	-0.76	-0.70
3800	1800	0.26	-0.81	-0.93	-0.87	-0.83
3600	1600	0.54	-0.83	-0.93	-0.92	-0.87
3400	1400	0.54	-0.81	-0.78	-0.87	-0.87

**Table S1.** Spearman's correlations between all archaeological proxies and arboreal (tree) pollen. Moving window results for central Italy for 200 year subsets of data in 2000-year moving time windows with time series shown in Figure S1: 1-5. The orange-blue scale values represent the statistical significance of correlation values, with orange representing  $p < 0.05$ , red  $p < 0.01$ , and blue  $p < 0.001$ . Strongest cross-correlation (\*lag -1; \*\*lag -2; \*\*\*lag +1; no asterisk lag 0).

Time start BP	Time end BP	SPD of radiocarbon dates	Raw count	Total area	Aoristic weight	Randomised duration
10000	8000	-0.37	0.62	0.62	0.62	0.61
9800	7800	0.04	0.70	0.70	0.69	0.73
9600	7600	0.20	0.57	0.57	0.60	0.64
9400	7400	0.05	0.37	0.37	0.43	0.41
9200	7200	-0.14	0.10	0.10	0.19	0.08
9000	7000	-0.48	-0.31	-0.31	-0.16	-0.38
8800	6800	-0.52	-0.24	-0.24	-0.10	-0.35
8600	6600	-0.73	-0.56	-0.56	-0.38	-0.71
8400	6400	-0.52	-0.06	-0.06	0.03	-0.22
8200	6200	-0.13	0.35	0.35	0.29	0.12
8000	6000	0.16	0.64	0.58	0.54	0.41
7800	5800	0.04	0.27	0.53	0.18	0.13
7600	5600	0.14	0.27	0.47	0.12	0.14
7400	5400	0.27	0.25	0.41	0.07	0.08
7200	5200	-0.05	-0.06	0.18	-0.25	-0.26
7000	5000	-0.25	-0.32	-0.08	-0.55	-0.53
6800	4800	-0.37	-0.28	-0.18	-0.60	-0.70
6600	4600	-0.47	-0.25	-0.22	-0.56	-0.71
6400	4400	-0.26	-0.12	-0.20	-0.41	-0.55
6200	4200	-0.25	0.19	0.08	-0.09	-0.53
6000	4000	-0.25	-0.07	0.23	-0.09	-0.28
5800	3800	-0.49	-0.02	-0.03	-0.35	-0.42
5600	3600	-0.33	0.01	0.07	-0.24	-0.37
5400	3400	-0.32	-0.25	0.10	-0.03	-0.13
5200	3200	-0.01	0.04	0.12	-0.07	-0.13
5000	3000	0.37	0.23	0.15	-0.04	-0.13
4800	2800	0.50	0.19	0.39	0.22	0.16
4600	2600	0.52	0.40	***0.59	0.47	0.38
4400	2400	0.55	0.48	***0.67	0.64	0.60
4200	2200	0.41	0.62	0.76	0.75	0.75
4000	2000	0.37	0.78	0.90	0.90	0.90
3800	1800	0.01	0.72	0.84	0.84	0.85
3600	1600	-0.41	0.72	0.79	0.75	0.79
3400	1400	-0.42	0.64	0.64	0.64	0.78

**Table S2.** Spearman's correlations between all archaeological proxies and Oleaceae pollen. Moving window results for central Italy for 200 year subsets of data in 2000-year moving time windows with time series shown in Figure S1: 11-15. The orange-blue scale values represent the statistical significance of correlation values, with orange representing  $p < 0.05$ , red  $p < 0.01$ , and blue  $p < 0.001$ . Strongest cross-correlation (\*lag -1; \*\*lag -2; \*\*\*lag +1; no asterisk lag 0).

Time start BP	Time end BP	SPD of radiocarbon dates	Raw count	Total area	Aoristic weight	Randomised duration
10000	8000	-0.49	0.38	0.38	0.39	0.41
9800	7800	-0.37	0.25	0.25	0.28	0.28
9600	7600	-0.03	0.20	0.20	0.22	0.38
9400	7400	-0.28	-0.03	-0.03	0.00	0.13
9200	7200	-0.12	0.23	0.23	0.18	0.35
9000	7000	-0.45	-0.17	-0.17	-0.19	-0.10
8800	6800	-0.55	-0.24	-0.24	-0.24	-0.21
8600	6600	-0.82	-0.57	-0.57	-0.58	-0.55
8400	6400	-0.68	-0.12	-0.12	-0.22	-0.14
8200	6200	-0.38	0.20	0.20	0.01	0.12
8000	6000	-0.22	0.36	0.32	0.16	0.27
7800	5800	-0.32	-0.03	0.19	-0.13	-0.13
7600	5600	-0.10	0.13	0.46	0.01	0.04
7400	5400	-0.04	0.01	0.30	-0.13	-0.12
7200	5200	-0.09	-0.01	0.31	-0.18	-0.18
7000	5000	-0.35	-0.37	-0.05	-0.59	-0.56
6800	4800	-0.41	-0.23	-0.19	-0.62	-0.75
6600	4600	-0.39	-0.22	-0.17	-0.52	-0.65
6400	4400	-0.18	-0.10	-0.06	-0.25	-0.41
6200	4200	-0.10	0.20	0.15	0.04	-0.37
6000	4000	-0.02	0.15	0.45	0.10	-0.21
5800	3800	-0.56	-0.11	0.03	-0.28	-0.24
5600	3600	-0.45	-0.06	-0.15	-0.48	-0.32
5400	3400	-0.54	-0.30	-0.05	-0.24	-0.10
5200	3200	-0.07	0.04	0.17	0.01	-0.01
5000	3000	0.07	0.17	0.04	-0.15	-0.27
4800	2800	0.28	0.07	0.22	0.08	-0.09
4600	2600	0.37	0.27	0.43	0.33	0.21
4400	2400	0.36	0.42	0.58	0.50	0.45
4200	2200	0.25	0.55	0.68	*0.65	***0.62
4000	2000	0.14	0.65	***0.75	0.72	***0.72
3800	1800	-0.10	0.67	***0.73	0.72	0.76
3600	1600	-0.43	0.62	***0.64	0.66	0.64
3400	1400	-0.47	0.55	0.50	0.58	0.61

**Table S3.** Spearman's correlations between all archaeological proxies and OJC (*Olea*, *Juglans*, *Castanea*) pollen. Moving window results for central Italy for 200 year subsets of data in 2000-year moving time windows with time series shown in Figure S1: 15-20. The orange-blue scale values represent the statistical significance of correlation values, with orange representing  $p < 0.05$ , red  $p < 0.01$ , and blue  $p < 0.001$ . Strongest cross-correlation (\*lag -1; \*\*lag -2; \*\*\*lag +1; no asterisk lag 0).

Time start BP	Time end BP	SPD of radiocarbon dates	Raw count	Total area	Aoristic weight	Randomised duration
10000	8000	-0.33	0.26	0.26	0.31	0.37
9800	7800	-0.21	0.26	0.26	0.30	0.36
9600	7600	0.04	0.33	0.33	0.33	0.50
9400	7400	-0.07	0.20	0.20	0.19	0.44
9200	7200	0.02	0.32	0.32	0.26	0.53
9000	7000	-0.20	0.05	0.05	0.00	0.25
8800	6800	-0.43	-0.32	-0.32	-0.36	-0.13
8600	6600	-0.64	-0.70	-0.70	-0.77	-0.49
8400	6400	-0.45	-0.28	-0.28	-0.44	-0.08
8200	6200	-0.01	0.15	0.15	-0.23	0.19
8000	6000	0.13	0.31	0.24	-0.07	0.31
7800	5800	-0.02	-0.06	0.10	-0.30	-0.14
7600	5600	-0.09	-0.18	0.20	-0.34	-0.25
7400	5400	0.03	-0.02	0.36	-0.18	-0.24
7200	5200	-0.20	-0.23	0.18	-0.42	-0.48
7000	5000	-0.30	-0.37	0.08	-0.58	-0.72
6800	4800	-0.27	-0.09	-0.14	-0.62	-0.87
6600	4600	-0.22	-0.09	-0.15	-0.53	-0.76
6400	4400	-0.08	0.03	-0.04	-0.22	-0.52
6200	4200	0.01	0.33	0.16	0.05	-0.48
6000	4000	0.09	0.26	0.46	0.12	-0.35
5800	3800	-0.45	-0.02	0.05	-0.27	-0.37
5600	3600	-0.72	0.21	0.18	-0.28	-0.30
5400	3400	-0.76	0.15	0.36	-0.05	-0.12
5200	3200	-0.50	0.30	0.44	0.03	-0.01
5000	3000	-0.28	0.36	0.49	0.07	-0.04
4800	2800	0.01	0.27	0.62	0.35	0.12
4600	2600	0.19	0.38	0.73	0.50	0.44
4400	2400	0.16	0.20	0.62	0.49	0.49
4200	2200	0.02	0.43	0.61	0.50	0.54
4000	2000	-0.15	0.24	0.42	0.28	0.33
3800	1800	-0.19	0.18	0.36	0.22	0.28
3600	1600	-0.07	0.27	0.45	0.47	0.44
3400	1400	-0.14	0.08	0.18	0.20	0.25

**Table S4.** Spearman's correlations between all archaeological proxies and OJCV (*Olea*, *Juglans*, *Castanea*, *Vitis*) pollen. Moving window results for central Italy for 200 year subsets of data in 2000-year moving time windows with time series shown in Figure S2: 1-5. The orange-blue scale values represent the statistical significance of correlation values, with orange representing  $p < 0.05$ , red  $p < 0.01$ , and blue  $p < 0.001$ . Strongest cross-correlation (\*lag -1; \*\*lag -2; \*\*\*lag +1; no asterisk lag 0).

Time start BP	Time end BP	SPD of radiocarbon dates	Raw count	Total area	Aoristic weight	Randomised duration
10000	8000	-0.08	-0.46	-0.46	-0.52	-0.16
9800	7800	-0.55	-0.43	-0.43	-0.49	-0.31
9600	7600	-0.37	-0.56	-0.56	-0.62	-0.28
9400	7400	-0.49	-0.64	-0.64	-0.68	-0.51
9200	7200	-0.33	-0.48	-0.48	-0.54	-0.24
9000	7000	-0.39	-0.38	-0.38	-0.45	-0.13
8800	6800	-0.42	-0.28	-0.28	-0.35	-0.16
8600	6600	-0.28	0.12	0.12	0.02	0.27
8400	6400	-0.27	0.27	0.27	0.14	0.36
8200	6200	-0.09	0.47	0.47	0.34	0.56
8000	6000	0.07	0.58	0.39	0.47	0.66
7800	5800	-0.18	0.24	0.21	0.26	0.20
7600	5600	0.07	0.38	0.10	0.39	0.23
7400	5400	0.28	0.41	0.07	0.43	0.11
7200	5200	0.26	0.44	0.17	0.42	0.02
7000	5000	0.04	0.19	-0.11	0.09	-0.17
6800	4800	-0.14	0.25	-0.32	-0.20	-0.42
6600	4600	0.04	0.15	-0.12	-0.05	-0.08
6400	4400	0.03	0.14	0.06	0.10	0.05
6200	4200	-0.09	0.21	0.12	0.05	-0.05
6000	4000	-0.09	-0.05	0.29	0.05	0.06
5800	3800	-0.62	-0.30	-0.16	-0.37	-0.05
5600	3600	***-0.76	-0.13	-0.10	-0.41	-0.06
5400	3400	***-0.78	-0.23	0.01	-0.19	0.06
5200	3200	-0.30	0.04	0.24	0.07	0.17
5000	3000	0.09	0.23	0.41	0.27	0.28
4800	2800	0.36	0.12	0.56	0.50	0.38
4600	2600	0.56	0.00	0.50	0.45	0.28
4400	2400	0.58	-0.24	0.26	0.21	-0.22
4200	2200	0.45	0.13	0.26	0.19	0.02
4000	2000	0.48	0.18	0.32	0.25	0.08
3800	1800	0.48	-0.09	0.05	-0.02	-0.15
3600	1600	0.14	-0.09	0.02	-0.13	-0.10
3400	1400	0.19	-0.32	-0.37	-0.49	-0.25

**Table S5.** Spearman's correlations between all archaeological proxies and API (Anthropogenic Pollen Index). Moving window results for central Italy for 200 year subsets of data in 2000-year moving time windows with time series shown in Figure S2: 6-10. The orange-blue scale values represent the statistical significance of correlation values, with orange representing  $p < 0.05$ , red  $p < 0.01$ , and blue  $p < 0.001$ . Strongest cross-correlation (\*lag -1; \*\*lag -2; \*\*\*lag +1; no asterisk lag 0).

Time start BP	Time end BP	SPD of radiocarbon dates	Raw count	Total area	Aoristic weight	Randomised duration
10000	8000	0.30	0.24	0.24	0.20	0.39
9800	7800	0.10	0.35	0.35	0.30	0.52
9600	7600	0.39	0.33	0.33	0.28	0.59
9400	7400	0.25	0.10	0.10	0.04	0.41
9200	7200	0.01	-0.26	-0.26	-0.30	0.20
9000	7000	0.14	-0.15	-0.15	-0.23	0.31
8800	6800	-0.12	-0.40	-0.40	-0.48	0.01
8600	6600	0.05	0.02	0.02	-0.09	0.33
8400	6400	0.26	0.54	0.54	0.38	0.71
8200	6200	0.43	0.77	0.77	0.61	0.88
8000	6000	0.39	0.77	0.61	0.61	0.88
7800	5800	0.22	0.53	0.46	0.48	0.58
7600	5600	0.28	0.53	0.48	0.50	0.55
7400	5400	0.45	0.56	0.51	0.52	0.43
7200	5200	0.45	0.57	0.51	0.54	0.43
7000	5000	0.56	0.65	0.59	0.65	0.36
6800	4800	0.56	0.52	0.50	0.59	0.13
6600	4600	0.71	0.36	0.59	0.65	0.28
6400	4400	0.75	0.38	0.39	0.47	0.16
6200	4200	0.76	0.17	0.08	0.26	0.16
6000	4000	0.52	-0.09	0.08	0.16	0.30
5800	3800	0.14	-0.20	-0.29	-0.20	0.22
5600	3600	-0.04	-0.22	-0.63	-0.64	0.10
5400	3400	-0.12	-0.30	-0.60	-0.60	0.09
5200	3200	-0.32	-0.49	-0.40	-0.47	0.02
5000	3000	-0.32	-0.54	-0.34	-0.41	-0.04
4800	2800	-0.36	-0.58	-0.42	-0.42	-0.20
4600	2600	-0.28	-0.47	-0.25	-0.32	-0.20
4400	2400	-0.26	-0.19	-0.02	-0.04	0.10
4200	2200	-0.37	-0.15	-0.15	-0.19	-0.31
4000	2000	-0.16	-0.25	-0.26	-0.30	-0.41
3800	1800	-0.16	0.08	0.07	0.03	0.02
3600	1600	-0.18	0.18	0.21	0.21	0.22
3400	1400	-0.42	0.10	0.15	0.12	0.09

**Table S6.** Spearman's correlations between all archaeological proxies and regional pastoral indicators. Moving window results for central Italy for 200 year subsets of data in 2000-year moving time windows with time series shown in Figure S2: 11-15. The orange-blue scale values represent the statistical significance of correlation values, with orange representing  $p < 0.05$ , red  $p < 0.01$ , and blue  $p < 0.001$ . Strongest cross-correlation (\*lag -1; \*\*lag -2; \*\*\*lag +1; no asterisk lag 0).

1  
2  
3  
4  
5  
6  
7  
8  
9  
10  
11  
12  
13  
14  
15  
16  
17  
18  
19  
20  
21  
22  
23  
24  
25  
26  
27  
28  
29  
30  
31  
32  
33  
34  
35  
36  
37  
38  
39  
40  
41  
42  
43  
44  
45  
46  
47  
48  
49  
50  
51  
52  
53  
54  
55  
56  
57  
58  
59  
60

For Peer Review